



Location 1. OSGB: SE21911 - 00525 Lat/Lon: 53 30.057 - 001 40.269. Distance to Turbine = 1432m 209m AOD. View looking Northeast.

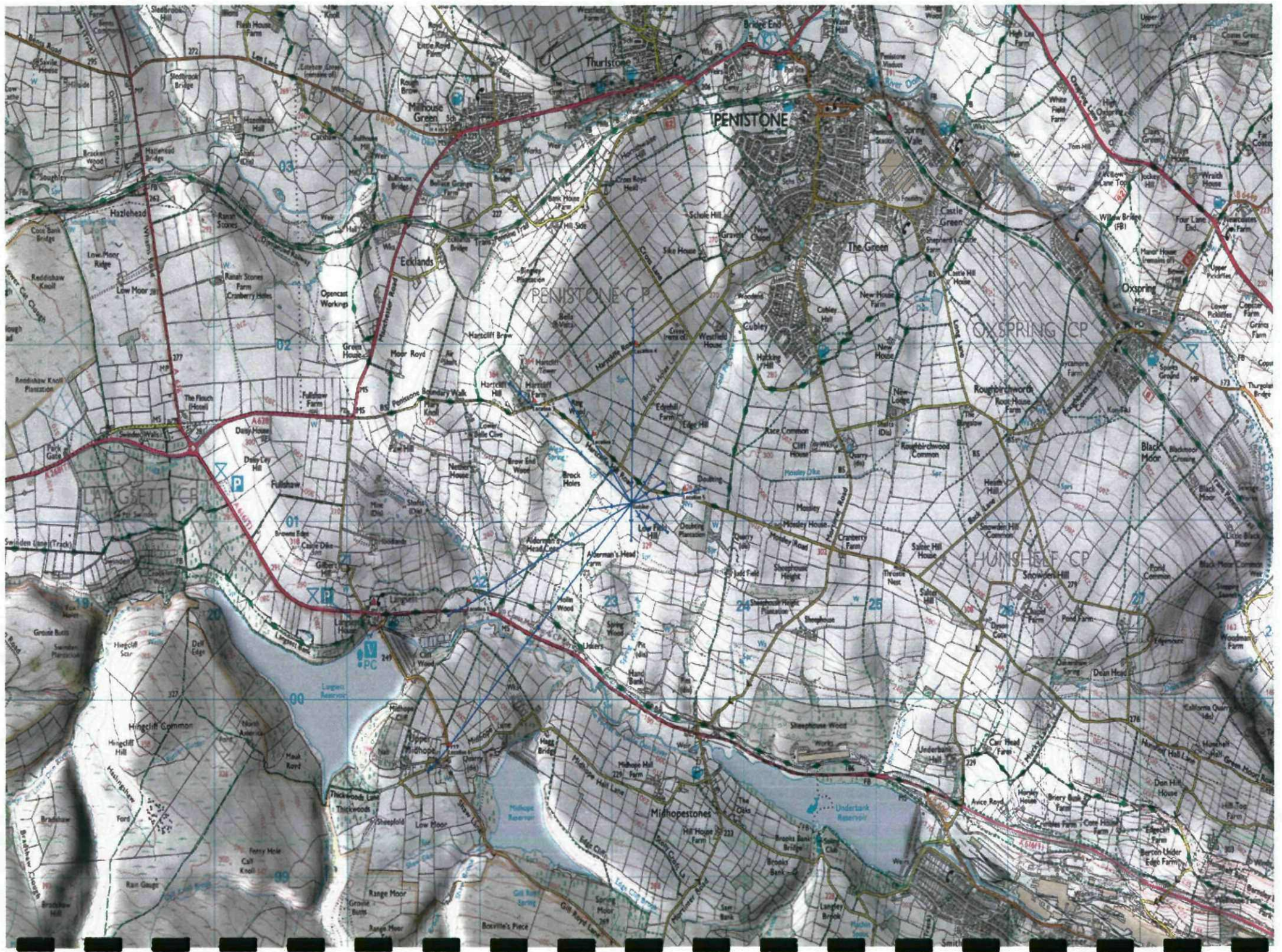


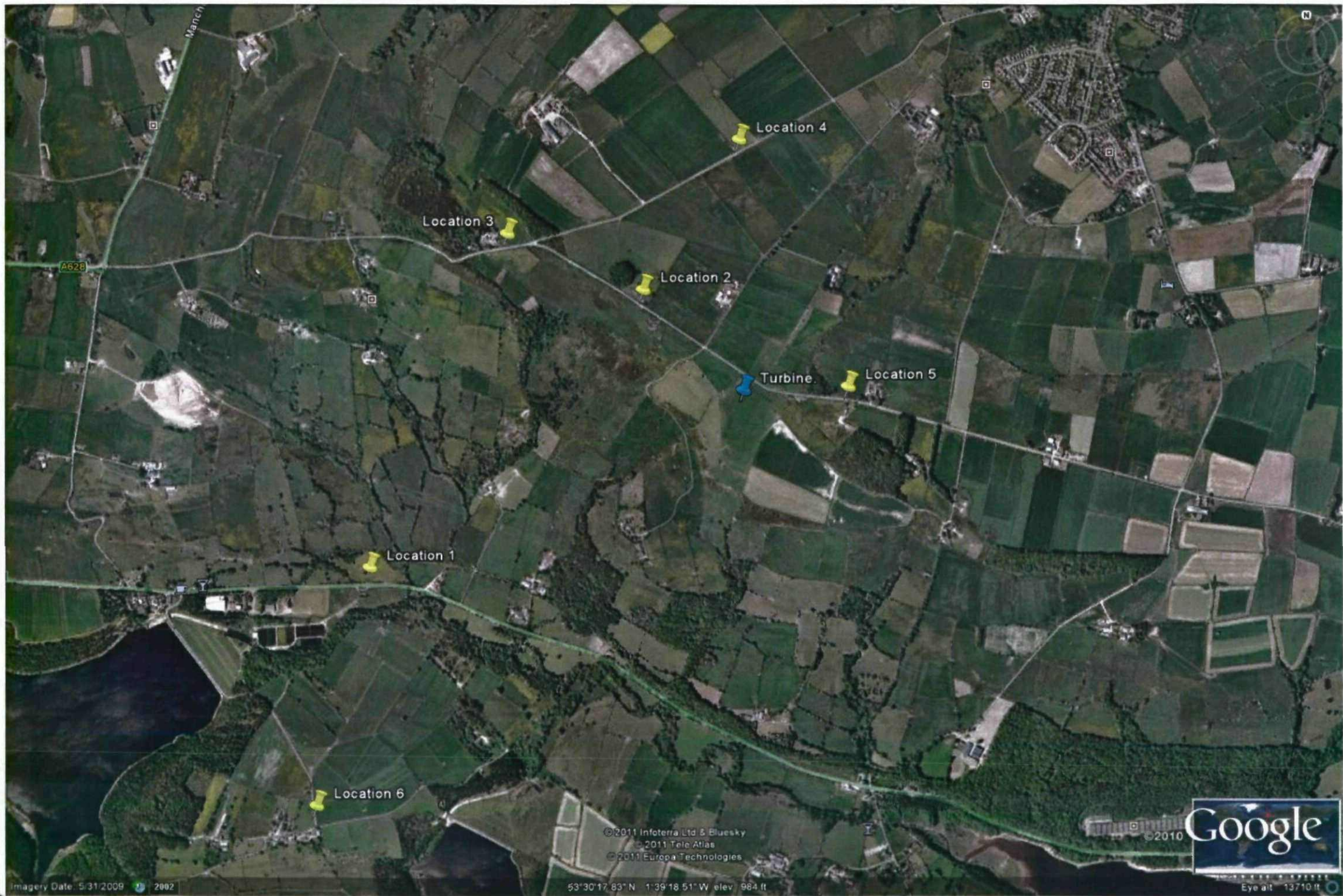
Location 2. OSGB: SE22851 - 01467 Lat/Lon: 53 30.864 - 001 39.415 Distance to Turbine = 475.34m 344m AOD. View looking Southeast



Turbine.

Location 3. OSGB: SE22398 - 01654 Lat/Lon: 53 30.665 - 001 39.823 Distance to Turbine = 946m 350m AOD. View looking Southeast.





Manch

A628

Location 3

Location 4

Location 2

Turbine

Location 5

Location 1

Location 6

© 2011 Infoterra Ltd & Bluesky  
© 2011 Tele Atlas  
© 2011 Europa Technologies

© 2010 Google

Imagery Date: 5/31/2009 2002

53°30'17.83"N 1°39'18.51"W elev 984 ft

Eye alt 13710 ft