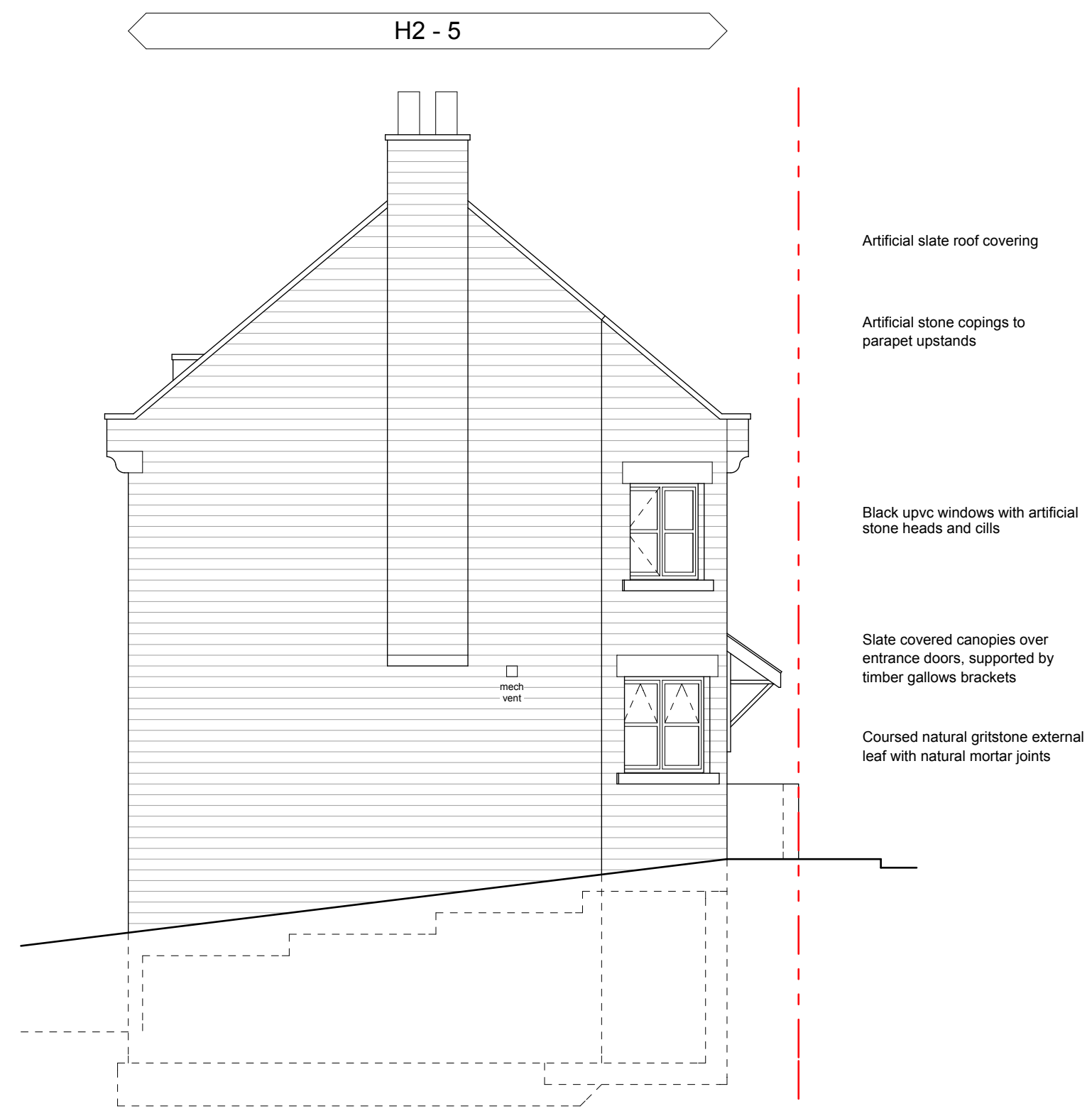




- Artificial slate roof covering
- Artificial stone copings to parapet upstands
- Conservation style rooflights
- Black upvc windows with artificial stone heads and cills
- Coursed natural gritstone external leaf with natural mortar joints
- Composite external doors

Block B - Front / West Elevation (The Green)



- Artificial slate roof covering
- Artificial stone copings to parapet upstands
- Black upvc windows with artificial stone heads and cills
- Slate covered canopies over entrance doors, supported by timber gallows brackets
- Coursed natural gritstone external leaf with natural mortar joints

Block B - Side / North Elevation (Green Road)

SLA DESIGN^{UP}
Cost Conscious Creativity
 Architecture | Master Planning | Visualisation | Interior Design
 SLA Design LLP
 The Link Building
 24A St Andrew's Road
 Sheffield
 South Yorkshire
 S11 5AL
 Tel: (+44) 0114 2585603
 Fax: (+44) 0114 2362918
 E-mail: enquiries@SLADesign.co.uk
 www.SLADesign.co.uk
 SLA Design LLP
 Reg. No: SC038073 Registered in England and Wales
 Reg. Office: 39-43 Bridge Street, Swinton, M20 9UR, South Yorkshire S64 8AP



Revision : Date :
 Rev A - 26/02/14
 Block B recessed entrance doors omitted and canopies added.

Project Title:
**The Saw Mill
 The Green
 Penistone
 S36 6BG**

Drawing Title:
**Proposed Elevations -
 Block B (Sheet 1 of 2)**

Project No:	Drawing No:	Revision:
10/064	106	A
Date:	Drawn by:	Scale:
October 2013	PH	1:75@A1
Drawing Status :	PLANNING	
<small>SLA DESIGN: - All rights reserved by SLA DESIGN - No part of this publication may be reproduced, stored in any retrieval system or transmitted in any form or by any means without the prior permission of SLA DESIGN Do not scale off drawing All dimensions to be checked on site</small>		