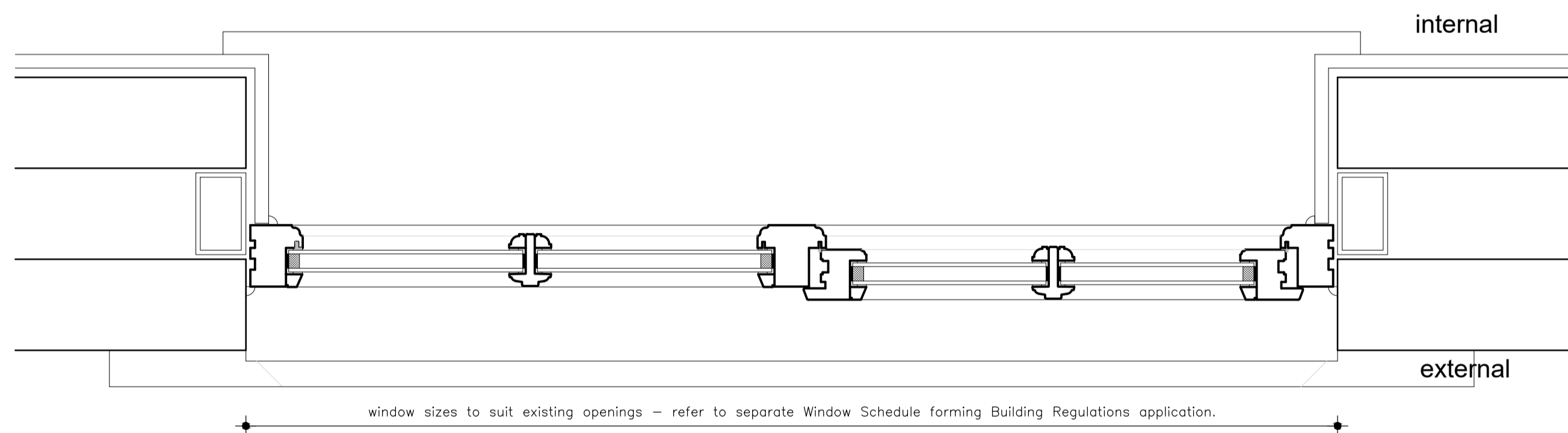
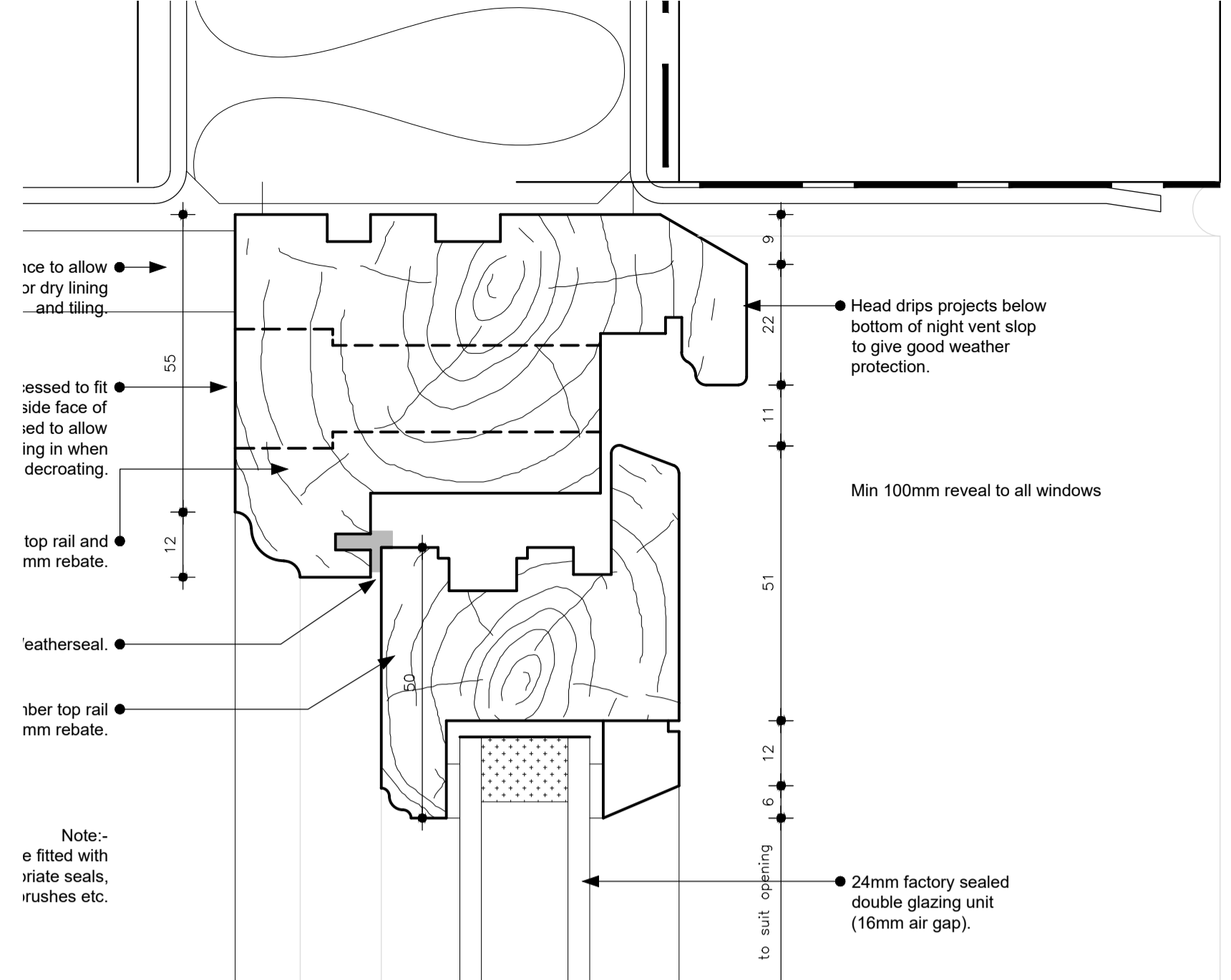


window elevations - casement
scale 1:10



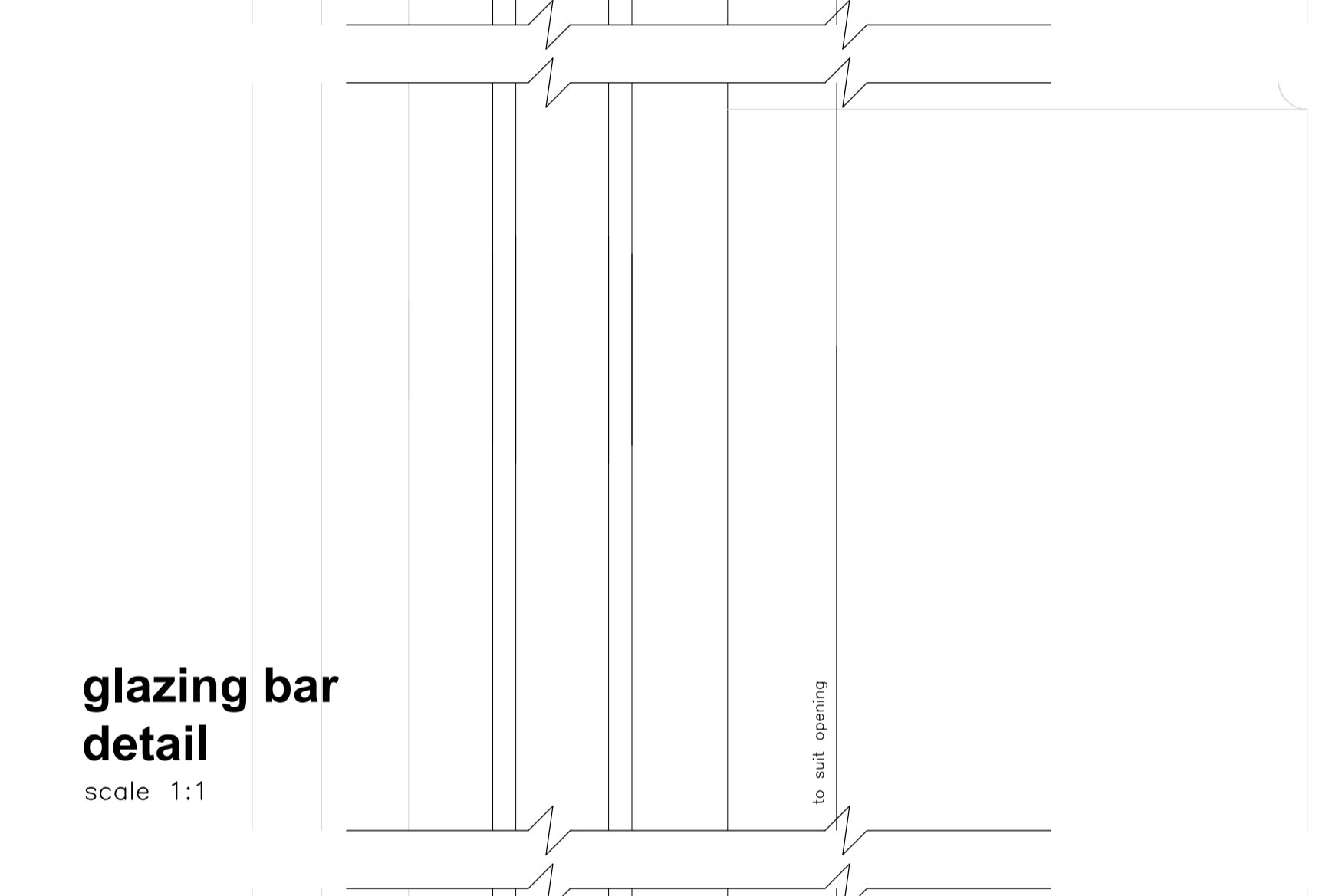
window sizes to suit existing openings - refer to separate Window Schedule forming Building Regulations application.

window plan - casement
scale 1:5

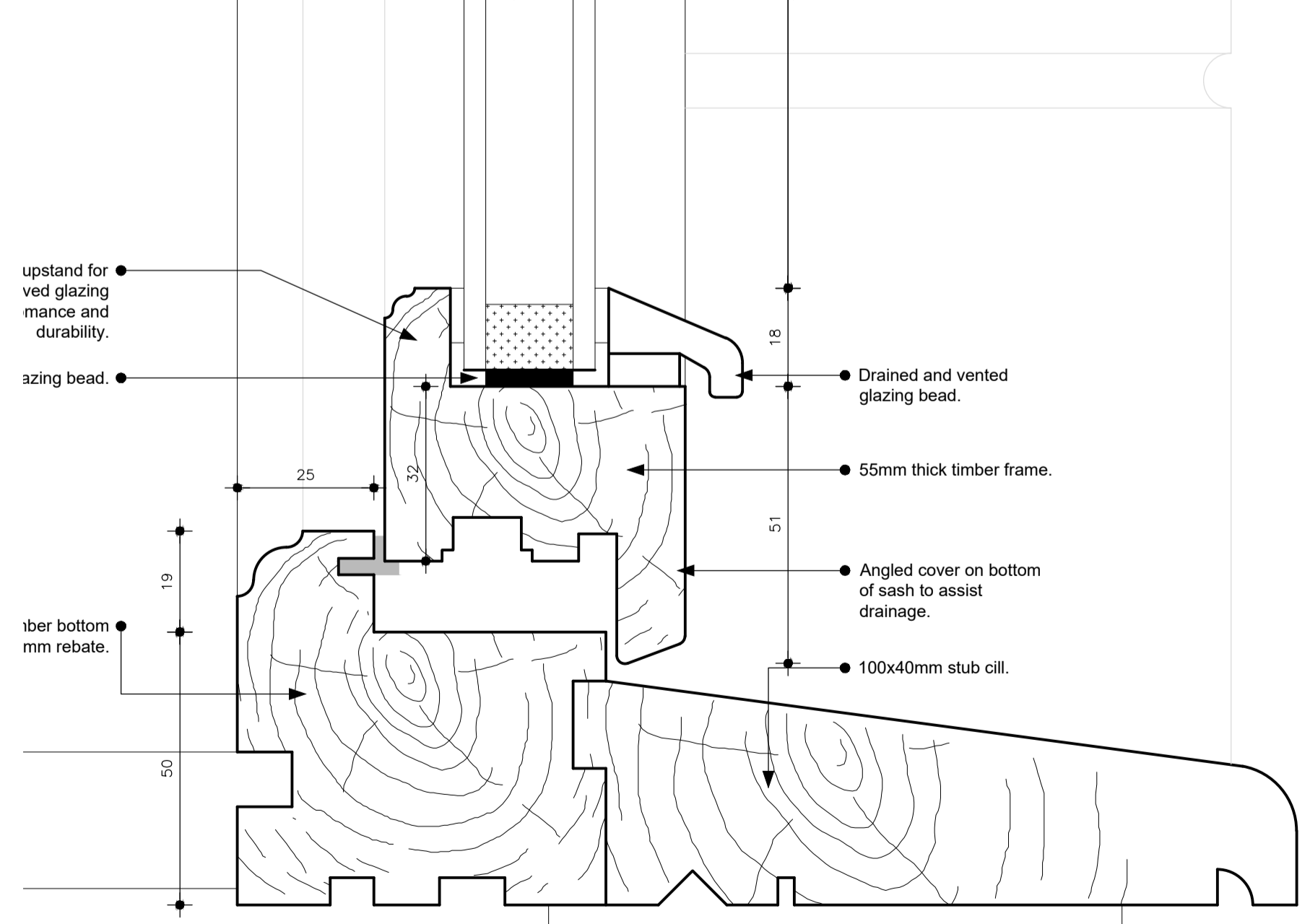


- ice to allow or dry lining and tiling.
- dressed to fit side face of sash to allow opening in when de-croasting.
- top rail and 12mm rebate.
- leatherseal.
- timber top rail 12mm rebate.
- Note:- sashes fitted with gaskets, seals, brushes etc.
- Head drips projects below bottom of night vent slop to give good weather protection.
- Min 100mm reveal to all windows
- 24mm factory sealed double glazing unit (16mm air gap).

head detail
scale 1:1

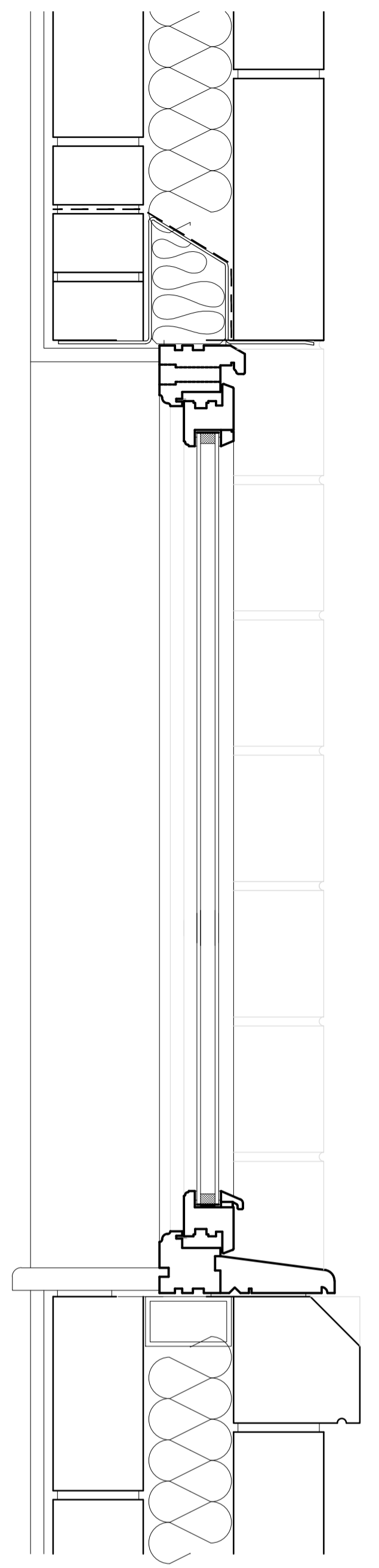


glazing bar detail
scale 1:1



- upstand for fixed glazing to ensure performance and durability.
- glazing bead.
- Drained and vented glazing bead.
- 55mm thick timber frame.
- Angled cover on bottom of sash to assist drainage.
- 100x40mm stub cill.
- timber bottom 12mm rebate.

cill details
scale 1:1



window section
scale 1:5