

Adoptable Basin 1 (Yorkshire Water)

Proposed Attenuation Basin with a total surface area 24,565m² at the freeboard level, with 1:4 embankments and 1:4 side slopes in the basin area with a 400mm freeboard, designed to store:

- 19,229m³ in a 1:30 storm event,
- 22,548m³ in a 1:100+30% storm event,

TB - 102.800/105.00 Inlet
 BB - 101.570 falling to Outlet 101.400
 TWL - 102.400
 Overflow Weir - 102.253

10m of 300mm reno-matress erosion protection by the inlet

Refer to drawings HOYLA-RPS-SI-XX-DR-D-376 and HOYLA-RPS-SI-XX-DR-D-377 for Basin details.

Basin 2 (private)

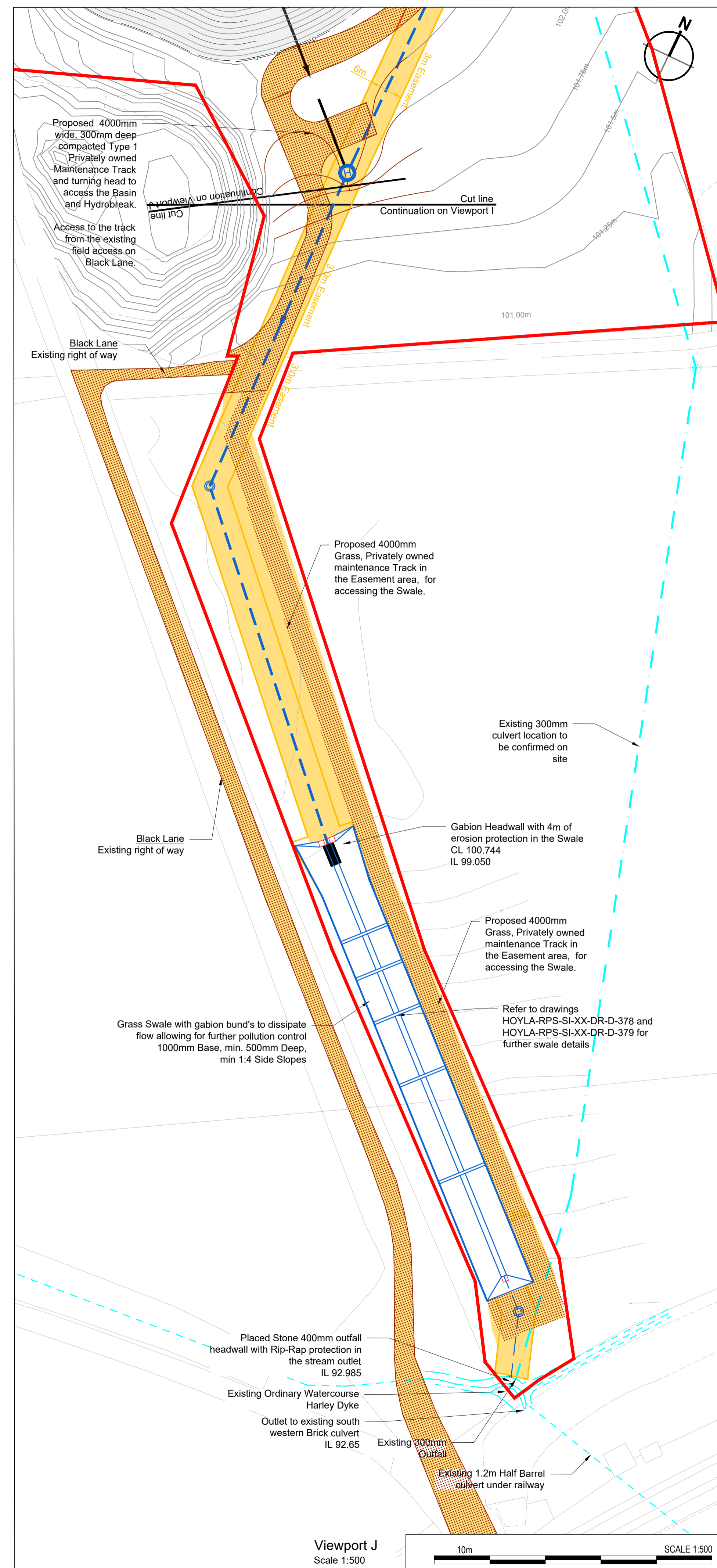
This Basin is to cater for the 100 year+CC Storm events and will remain private and will not be transferred to Yorkshire Water. The developer (Newland's Development's) will retain the basin and will be responsible for its maintenance.

Proposed Attenuation Basin to store a maximum 17047m³ in a 1:100+30% storm event, with 1:4 embankments and 1:4 side slopes in the basin area with a 300mm freeboard.

TB - 102.600
 BB - 100.100 falling to Outlet 99.900
 TWL - 102.300

2.5m of 300mm reno-matress erosion protection by the inlet and outlet

Viewport Ia
 Scale 1:500



Proposed 4000mm wide, 300mm deep compacted Type 1 Privately owned Maintenance Track and turning head to access the Basin and Hydrobreak.
 Access to the track from the existing field access on Black Lane.

Black Lane Existing right of way

Proposed 4000mm Grass, Privately owned maintenance Track in the Easement area, for accessing the Swale.

Existing 300mm culvert location to be confirmed on site

Gabion Headwall with 4m of erosion protection in the Swale CL 100.744 IL 99.050

Proposed 4000mm Grass, Privately owned maintenance Track in the Easement area, for accessing the Swale.

Grass Swale with gabion bund's to dissipate flow allowing for further pollution control 1000mm Base, min. 500mm Deep, min 1:4 Side Slopes

Refer to drawings HOYLA-RPS-SI-XX-DR-D-378 and HOYLA-RPS-SI-XX-DR-D-379 for further swale details

Placed Stone 400mm outfall headwall with Rip-Rap protection in the stream outlet IL 92.985

Existing Ordinary Watercourse Harley Dyke

Outlet to existing south western brick culvert IL 92.65

Existing 300mm Outfall

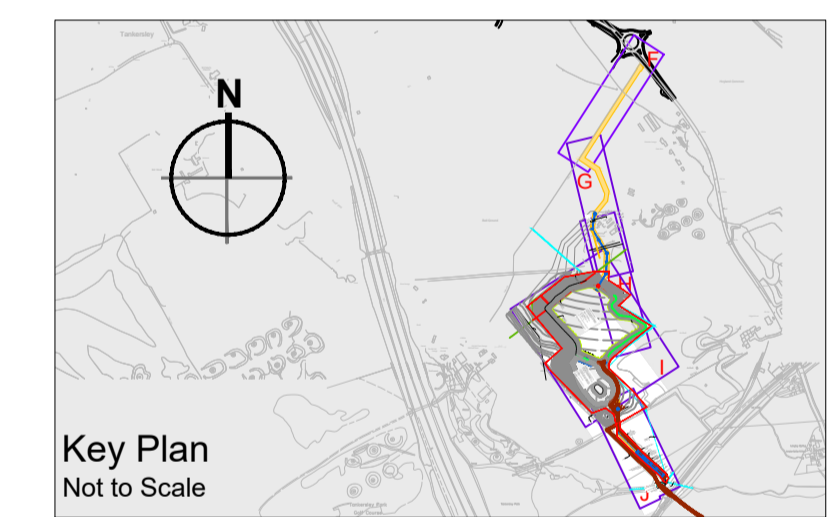
Existing 1.2m Half Barrel culvert under railway

Viewport J
 Scale 1:500



- A. This drawing has been prepared in accordance with the scope of RPS's appointment with its client and is subject to the terms and conditions of that appointment. RPS accepts no liability for any use of this document other than by its client and only for the purposes for which it was prepared and provided.
- B. If received electronically it is the recipient's responsibility to print to correct scale. Only written dimensions should be used.
- C. This drawing should be read in conjunction with all other relevant drawings and specifications.

	Adoption Easement
	Adoptable Attenuation Basin
	Adopted Grass Maintenance Track
	Planning Boundary
	Existing Water Course
	Proposed Surface Water
	Private Pond
	Easement Access track



P01	Issued for Planning Approval	MF	ANT	18.05.21
Rev	Description	By	Ckd	Date



Sherwood House, Sherwood Avenue,
 Newark, Nottinghamshire, NG24 1QQ
 T:01636 605 700 E: rpsnewark@rpsgroup.com



Project **Hoyland Common**

Title **Proposed Drainage GA Attenuation Basin 1 Planning Boundaries (Sheet 2)**

RPS Project Number	Scale @ A1	Date Created
NK020040	1:500	17.05.2021
Task Team Manager	Information Author	Task Information Manager
SH	MF	ANT

Status **S4 (Suitable for Stage Approval)**
 Document Number **HOYLA-RPS-SI-XX-DR-D-346** Revision **P01**
 Project Code - Originator - Zone - Level - Type - Role - Drawing Number
 rpsgroup.com

Section 111 of the Water Industry Act 1991
 Under the provisions of Section 111 of the Water Industry Act 1991 it is unlawful to pass into any public sewer (or into any drain or private sewer communicating with the public sewer network) any items likely to cause damage to the public sewer network interfere with the free flow of its contents or affect the treatment and disposal of its contents. Amongst other things this includes construction materials. Contravention of the provisions of Section 111 is a criminal offence.