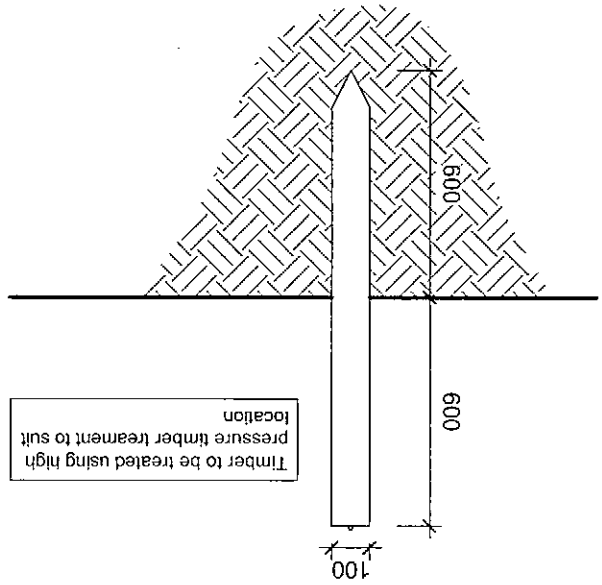
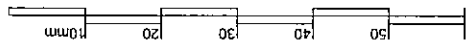
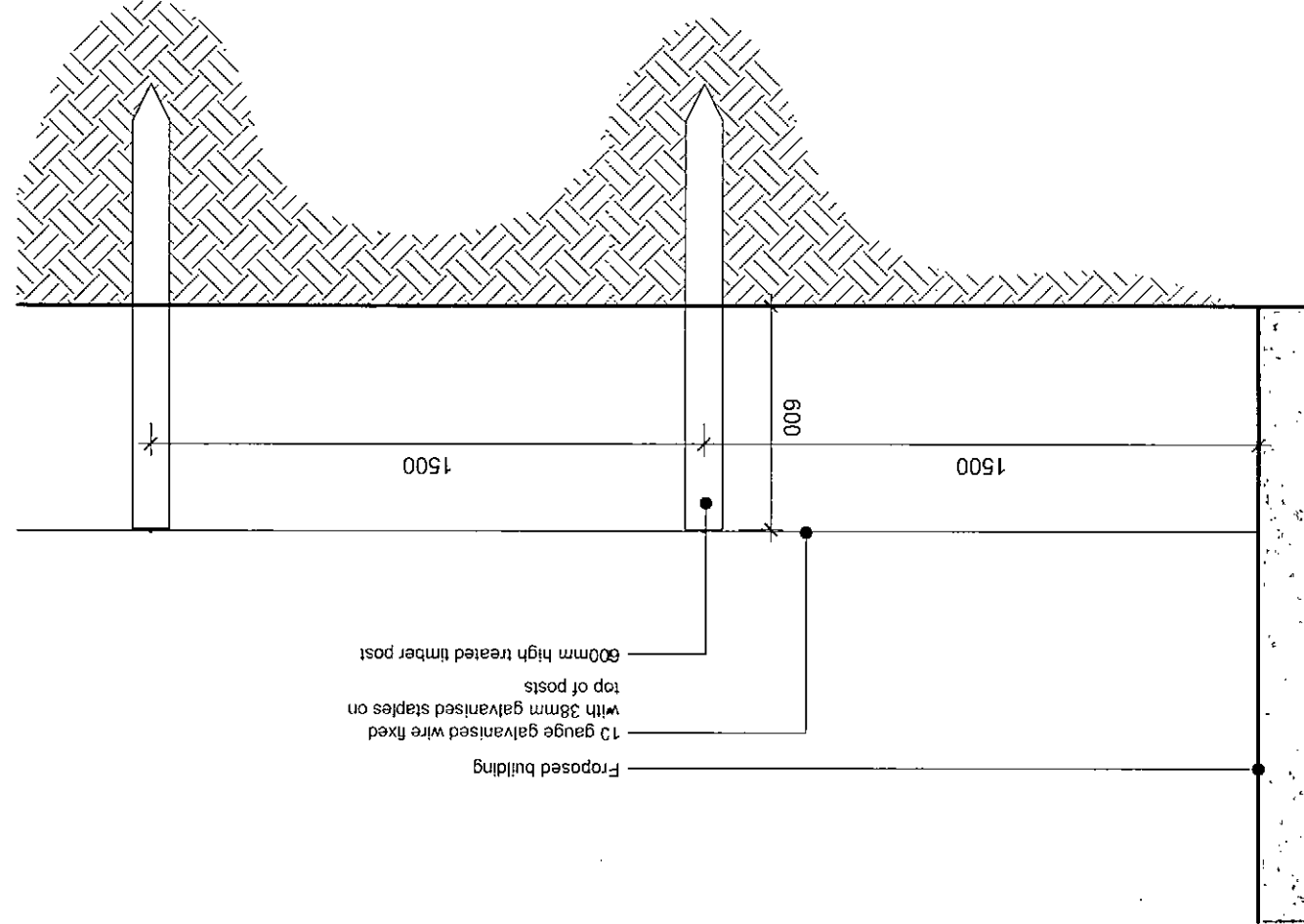


Notes:
 Sketch schemes may be based on plan information of unknown origin and is subject to verification and survey.
 Contractors must verify all dimensions on site before commencing any work or shop drawings. This drawing is not to be scaled. Use figured dimensions only.
 Building areas are liable to adjustment over the course of the design process due to ongoing construction detailing developments.
 Subject to statutory approvals and survey.



TYPICAL SECTION 1:20



TYPICAL ELEVATION 1:20

revisions
 - status

edward architectural services ltd

prospect house 32 sovereign street leeds ls1 4bj | 0113 399 4000
 www.eas-limited.co.uk

project Standard Details

client Gleeson Homes & Regeneration

title Boundary Details

Post and Wire Fence

drawn je checked date 13.04.11 scale 1:20@A4

job no 0282 drawing no SD103 rev

Revisions:	Date:
C. Detail removed from OPP handing.	06.11.14
B. Verge detail note revised.	22.10.13
A. SVP tile vent added.	17.09.13



FRONT ELEVATION

SIDE ELEVATION

- FEATURES**
- * Rolled profile roof tiles.
 - * Dry verge detail.
 - * Exposed rafter feet at eaves.
 - * Flat brick soldier arches.
 - * Cottage style windows with horizontal glazing bar.
 - * Brick cills.
 - * Cottage style main entrance door, with dual pitch canopy over on "gallows brackets"
 - * Triple band course at FF window cill level, cill omitted
 - * Brick quoins to corner and render on selected plots
 - * Vertical panel garage door
 - * Dark brick below DPC



REAR ELEVATION

SIDE ELEVATION



Client: **GLEESON HOMES & REGENERATION**

Project: **HOUSE TYPE DRAWING**

Title: **TYPE 201 ELEVATIONS (RURAL 13)**

Scales: 1:100 @ A3	Cad ref :
Drawn:	Checked: Date: July 2010
Drawing no. 13/201 -8	Rev. C

Revisions:	Date:
C. Detail removed from OPP handing. Airbrick to lower roof	13.11.14
B. Verge detail note revised.	22.10.13
A. SVP tile vent added.	18.09.13



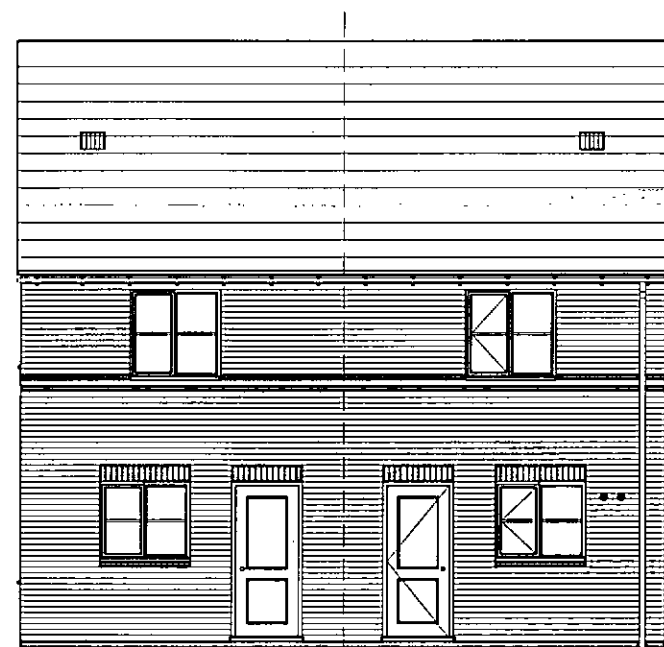
FRONT ELEVATION



SIDE ELEVATION

FEATURES

- * Rolled profile roof tiles.
- * Dry verge detail.
- * Exposed rafter feet at eaves.
- * Flat brick soldier arches.
- * Cottage style windows with horizontal glazing bar.
- * Brick cills.
- * Cottage style main entrance door, with dual pitch canopy over on "gallows brackets"
- * Triple band course at FF window cill level, cill omitted
- * Brick quoins to corner and render on selected plots
- * Vertical panel garage door
- * Dark brick below DPC



REAR ELEVATION



Client: **GLEESON HOMES & REGENERATION**

Project: **HOUSE TYPE DRAWING**

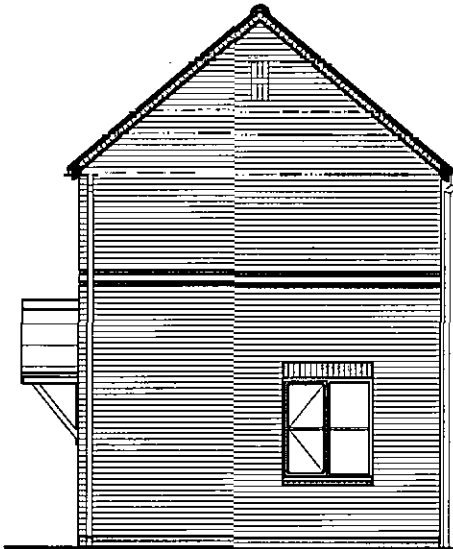
Title: **TYPE 202 ELEVATIONS (RURAL 13)**

Scales: 1:100 @ A3 Cad ref :

Drawn: Checked: Date: July 2010

Drawing no. **13/202 -9** Rev. **C**

Revisions:	Date:
C. Lounge & Bed 1 window handed.	25.03.15
B. Verge detail note revised.	22.10.13
A. SVP vent tile added.	18.09.13



Elevation when detached/internal corner plot



SIDE ELEVATION

302 - end terrace type and will be attached to a variety of others unit types, refer to site layout



FRONT ELEVATION

FEATURES

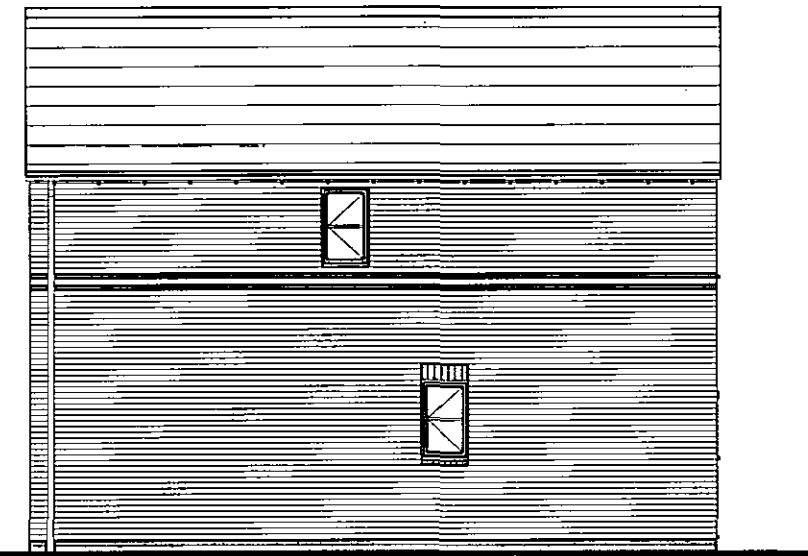
- * Rolled profile roof tiles.
- * Dry verge detail.
- * Exposed rafter feet at eaves.
- * Flat brick soldier arches.
- * Cottage style windows with horizontal glazing bar.
- * Brick cills.
- * Cottage style main entrance door, with dual pitch canopy over on "gallows brackets"
- * Triple band course at FF window cill level, cill omitted
- * Brick quoins to corner and render on selected plots
- * Vertical panel garage door
- * Dark brick below DPC



Elevation when detached/internal corner plot



REAR ELEVATION



Elevation when detached

REAR ELEVATION



Client: **GLEESON HOMES & REGENERATION**

Project: **HOUSE TYPE DRAWING**

Title: **TYPE 302 ELEVATIONS (RURAL 13)**

Scales: 1:100 @ A3 Cad ref:

Drawn: Checked: Date: July 2010

Drawing no. **13/302 -9 Rev. C**

Revisions:	Date:
D. Detail removed from OPP handing.	18.09.14
C. Kitchen & Bed 1 Wn, Living Wn & door.	06.12.13
B. Verge detail note revised.	18.10.13
A. SVP tile vent added.	18.09.13



FRONT ELEVATION



SIDE ELEVATION

- FEATURES**
- * Rolled profile roof tiles.
 - * Dry verge detail.
 - * Exposed rafter feet at eaves.
 - * Flat brick soldier arches.
 - * Cottage style windows with horizontal glazing bar.
 - * Brick cills.
 - * Cottage style main entrance door, with dual pitch canopy over on "gallows brackets"
 - * Triple band course at FF window cill level, cill omitted
 - * Brick quoins to corner and render on selected plots
 - * Vertical panel garage door
 - * Dark brick below DPC



REAR ELEVATION



Client: **GLEESON HOMES & REGENERATION**

Project: **HOUSE TYPE DRAWING**

Title: **TYPE 301 ELEVATIONS (RURAL 13)**

Scales: 1:100 @ A3 Cad ref :

Drawn: Checked: Date: July 2010

Drawing no. **13/301 -8** Rev. **D**

Revisions:	Date:
C. Detail removed from OPP handing. Airbrick to lower roof	12.11.14
B. Verge detail note revised.	22.10.13
A. SVP tile vent added.	18.09.13



FRONT ELEVATION



SIDE ELEVATION

FEATURES

- * Rolled profile roof tiles.
- * Dry verge detail.
- * Exposed rafter feet at eaves.
- * Flat brick soldier arches.
- * Cottage style windows with horizontal glazing bar.
- * Brick cills.
- * Cottage style main entrance door, with dual pitch canopy over on "gallows brackets"
- * Triple band course at FF window cill level, cill omitted
- * Brick quoins to corner and render on selected plots
- * Vertical panel garage door
- * Dark brick below DPC



REAR ELEVATION



Client: **GLEESON HOMES
& REGENERATION**

Project: **HOUSE TYPE
DRAWING**

Title: **TYPE 303
ELEVATIONS (RURAL 13)**

Scales: 1:100 @ A3

Cad ref :

Drawn:

Checked:

Date: July 2010

Drawing no. **13/303 -9** Rev. **C**

Revisions:	Date:
C. Airbrick to lower roof	13.11.14
B. Verge detail note revised.	22.10.13
A. SVP tile vent added.	18.09.13



- FEATURES**
- * Rolled profile roof tiles.
 - * Dry verge detail.
 - * Exposed rafter feet at eaves.
 - * Flat brick soldier arches.
 - * Cottage style windows with horizontal glazing bar.
 - * Brick cills.
 - * Cottage style main entrance door, with dual pitch canopy over on "gallows brackets"
 - * Triple band course at FF window cill level, cill omitted
 - * Brick quoins to corner and render on selected plots
 - * Vertical panel garage door
 - * Dark brick below DPC



Client:	GLEESON HOMES & REGENERATION	
Project:	HOUSE TYPE DRAWING	
Title:	TYPE 304 ELEVATIONS (RURAL 13)	
Scales:	1:100 @ A3	Cad ref :
Drawn:	Checked:	Date: July 2010
Drawing no.	13/304 -10	Rev. C

Revisions:	Date:
D. Kitchen & Bed 3 window handed.	24.03.15
C. Rear door to garage added.	03.03.15
B. Verge detail note revised.	22.10.13
A. SVP tile vent added.	23.09.13



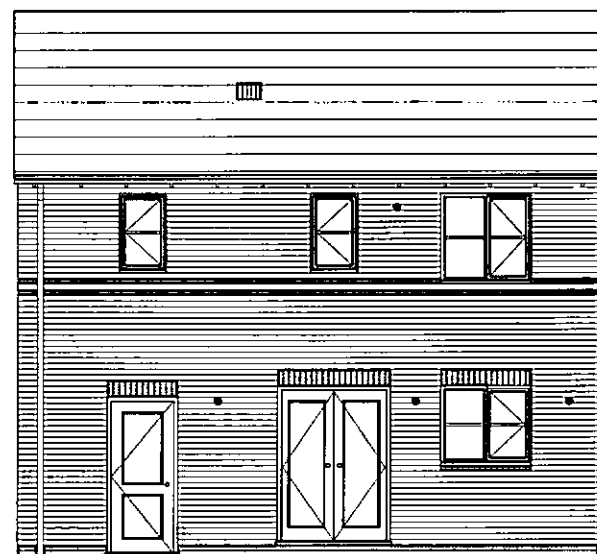
FRONT ELEVATION



SIDE ELEVATION

FEATURES

- * Rolled profile roof tiles.
- * Dry verge detail.
- * Exposed rafter feet at eaves.
- * Flat brick soldier arches.
- * Cottage style windows with horizontal glazing bar.
- * Brick cills.
- * Cottage style main entrance door, with dual pitch canopy over on "gallows brackets"
- * Triple band course at FF window cill level, cill omitted
- * Brick quoins to corner and render on selected plots
- * Vertical panel garage door
- * Dark brick below DPC



REAR ELEVATION



SIDE ELEVATION



Client: **GLEESON HOMES & REGENERATION**

Project: **HOUSE TYPE DRAWING**

Title: **TYPE 307 ELEVATIONS (RURAL 13)**

Scales: 1:100 @ A3 Cad ref :

Drawn: Checked: Date: July 2010

Drawing no. **13/307 -10 Rev. D**

Revisions:	Date:
C. Kitchen and Bed 3 window handed.	01.04.15
B. Verge detail note revised.	22.10.13
A. SVP tile vent added.	18.09.13



FEATURES

- * Rolled profile roof tiles.
- * Dry verge detail.
- * Exposed rafter feet at eaves.
- * Flat brick soldier arches.
- * Cottage style windows with horizontal glazing bar.
- * Brick cills.
- * Cottage style main entrance door, with dual pitch canopy over on "gallows brackets"
- * Triple band course at FF window cill level, cill omitted
- * Brick quoins to corner and render on selected plots
- * Vertical panel garage door
- * Dark brick below DPC



Client: **GLEESON HOMES
& REGENERATION**

Project: **HOUSE TYPE
DRAWING**

Title: **TYPE 309
ELEVATIONS (RURAL 13)**

Scales: 1:100 @ A3 Cad ref :
 Drawn: Checked: Date: Dec 2010

Drawing no. **13/309 -10 Rev. C**

Revisions:	Date:
C. Kitchen and Bed 3 window handed.	01.04.15
B. Verge detail note revised.	22.10.13
A. SVP tile vent added.	18.09.13



FEATURES

- * Rolled profile roof tiles.
- * Dry verge detail.
- * Exposed rafter feet at eaves.
- * Flat brick soldier arches.
- * Cottage style windows with horizontal glazing bar.
- * Brick cills.
- * Cottage style main entrance door, with dual pitch canopy over on "gallows brackets"
- * Triple band course at FF window cill level, cill omitted
- * Brick quoins to corner and render on selected plots
- * Vertical panel garage door
- * Dark brick below DPC



Client: **GLEESON HOMES & REGENERATION**

Project: **HOUSE TYPE DRAWING**

Title: **TYPE 310 ELEVATIONS (RURAL 13)**

Scales: 1:100 @ A3 Cad ref :

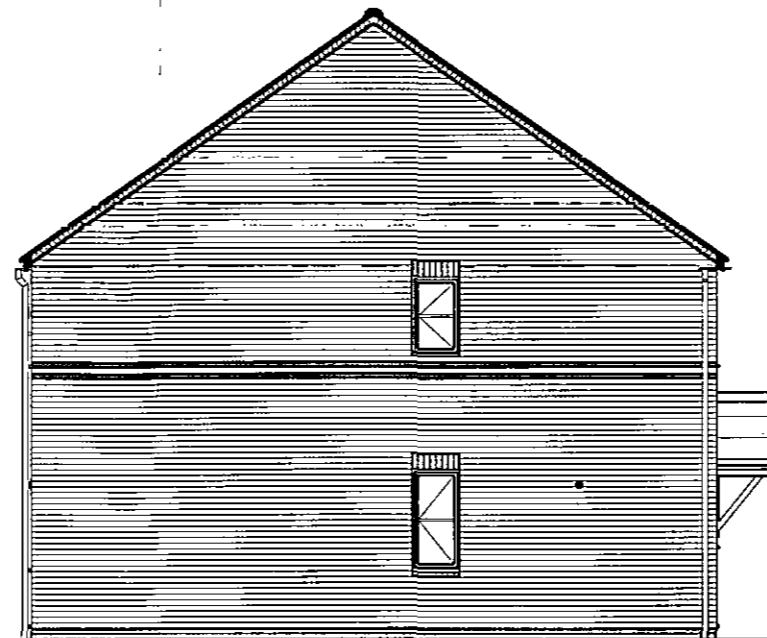
Drawn: Checked: Date: Oct 2011

Drawing no. **13/310 -10 Rev. C**

Revisions: Date: 14.11.14
 A. Detail removed from OPP handing.



FRONT ELEVATION



SIDE ELEVATION

- FEATURES**
- * Rolled profile roof tiles.
 - * Dry verge detail.
 - * Exposed rafter feet at eaves.
 - * Flat brick soldier arches.
 - * Cottage style windows with horizontal glazing bar.
 - * Brick cills.
 - * Cottage style main entrance door, with dual pitch canopy over on "gallows brackets"
 - * Triple band course at FF window cill level, cill omitted
 - * Brick quoins to corner and render on selected plots
 - * Vertical panel garage door
 - * Dark brick below DPC



REAR ELEVATION



Client: **GLEESON HOMES & REGENERATION**

Project: **HOUSE TYPE DRAWING**

Title: **TYPE 311 ELEVATIONS (RURAL 13)**

Scales: 1:100 @ A3 Cad ref :

Drawn: Checked: Date: Dec 2013

Drawing no. **13/311 -8** Rev. **A**

FEATURES

- * Rolled profile roof tiles.
- * Dry verge detail.
- * Exposed rafter feet at eaves.
- * Flat brick soldier arches.
- * Cottage style windows with horizontal glazing bar.
- * Brick cills.
- * Cottage style main entrance door, with dual pitch canopy over on "gallows brackets"
- * Triple band course at FF window cill level, cill omitted
- * Brick quoins to corner and render on selected plots
- * Vertical panel garage door
- * Dark brick below DPC

Revisions:	Date:
C. Verge detail note revised.	12.11.13
B. GF rear Wn Door revised.	06.11.13
A. SVP tile vent added, GF Wn Door revised	19.09.13



FRONT ELEVATION



SIDE ELEVATION



SIDE ELEVATION
exposed corner plots



REAR ELEVATION



SIDE ELEVATION



Client: **GLEESON HOMES & REGENERATION**

Project: **HOUSE TYPE DRAWING**

Title: **TYPE 401 ELEVATIONS (RURAL 13)**

Scales: 1:100 @ A3 Cad ref :

Drawn: Checked: Date: July 2010

Drawing no. **13/401 -9** Rev. **C**

Revisions:	Date:
B. Verge detail note revised.	22.10.13
A. SVP tile vent added.	19.09.13

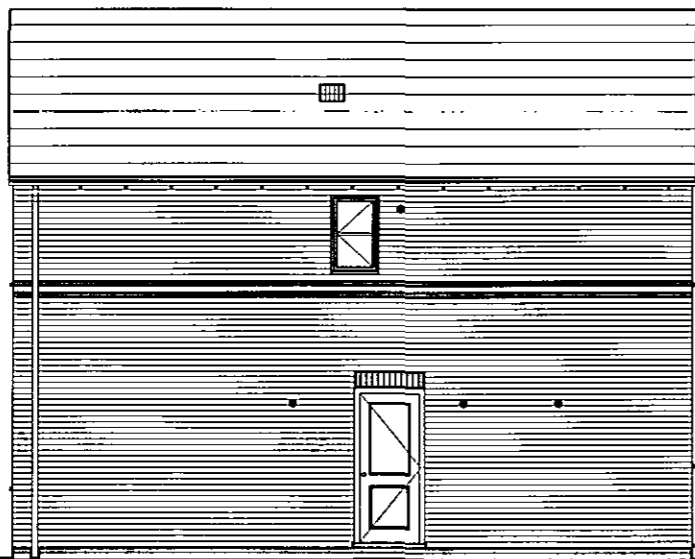


FRONT ELEVATION



SIDE ELEVATION

- FEATURES**
- * Rolled profile roof tiles.
 - * Dry verge detail.
 - * Exposed rafter feet at eaves.
 - * Flat brick soldier arches.
 - * Cottage style windows with horizontal glazing bar.
 - * Brick cills.
 - * Cottage style main entrance door, with dual pitch canopy over on "gallows brackets"
 - * Triple band course at FF window cill level, cill omitted
 - * Brick quoins to corner and render on selected plots
 - * Vertical panel garage door
 - * Dark brick below DPC



REAR ELEVATION



SIDE ELEVATION



Client: **GLEESON HOMES & REGENERATION**

Project: **HOUSE TYPE DRAWING**

Title: **TYPE 404 ELEVATIONS (RURAL 13)**

Scales: 1:100 @ A3 Cad ref :

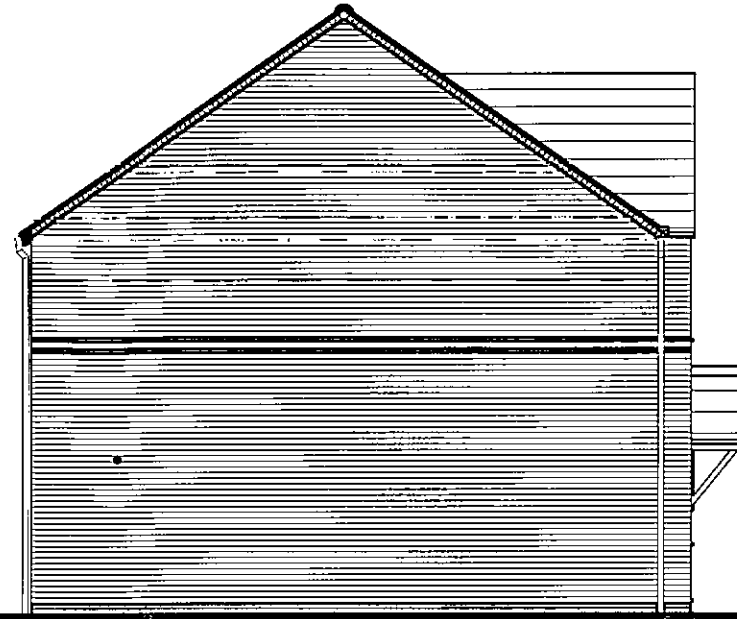
Drawn: Checked: Date: July 2010

Drawing no. **13/404 -9** Rev. **B**

Revisions:	Date:
C. Side bathroom window 6 revised.	20.03.15
B. Verge detail note revised.	22.10.13
A. SVP tile vent added. Kitchen/Utility revised Wn doors revised to suit.	23.09.13



FRONT ELEVATION



SIDE ELEVATION

FEATURES

- * Rolled profile roof tiles.
- * Dry verge detail.
- * Exposed rafter feet at eaves.
- * Flat brick soldier arches.
- * Cottage style windows with horizontal glazing bar.
- * Brick cills.
- * Cottage style main entrance door, with dual pitch canopy over on "gallows brackets"
- * Triple band course at FF window cill level, cill omitted
- * Brick quoins to corner and render on selected plots
- * Vertical panel garage door
- * Dark brick below DPC



REAR ELEVATION



SIDE ELEVATION



Client: **GLEESON HOMES & REGENERATION**

Project: **HOUSE TYPE DRAWING**

Title: **TYPE 405 ELEVATIONS (RURAL 13)**

Scales: 1:100 @ A3

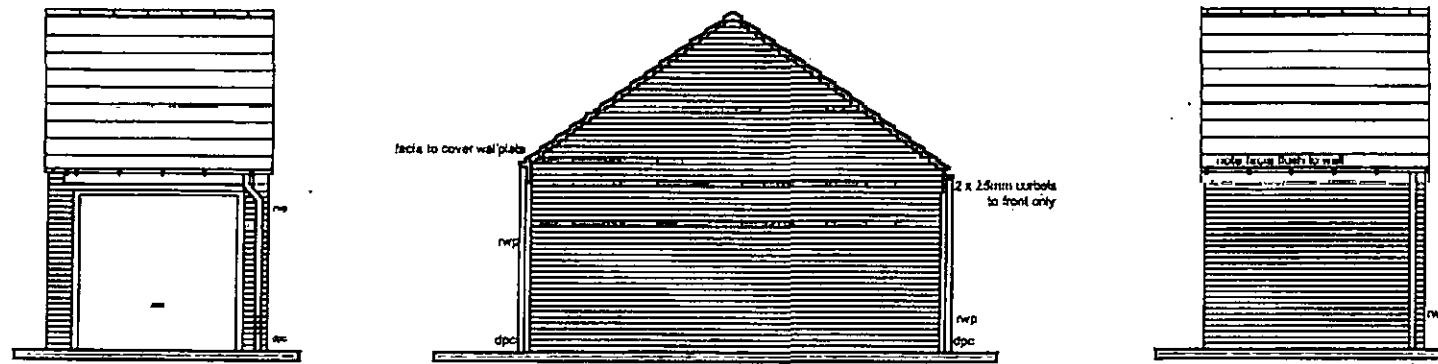
Cad ref :

Drawn:

Checked:

Date: July 2010

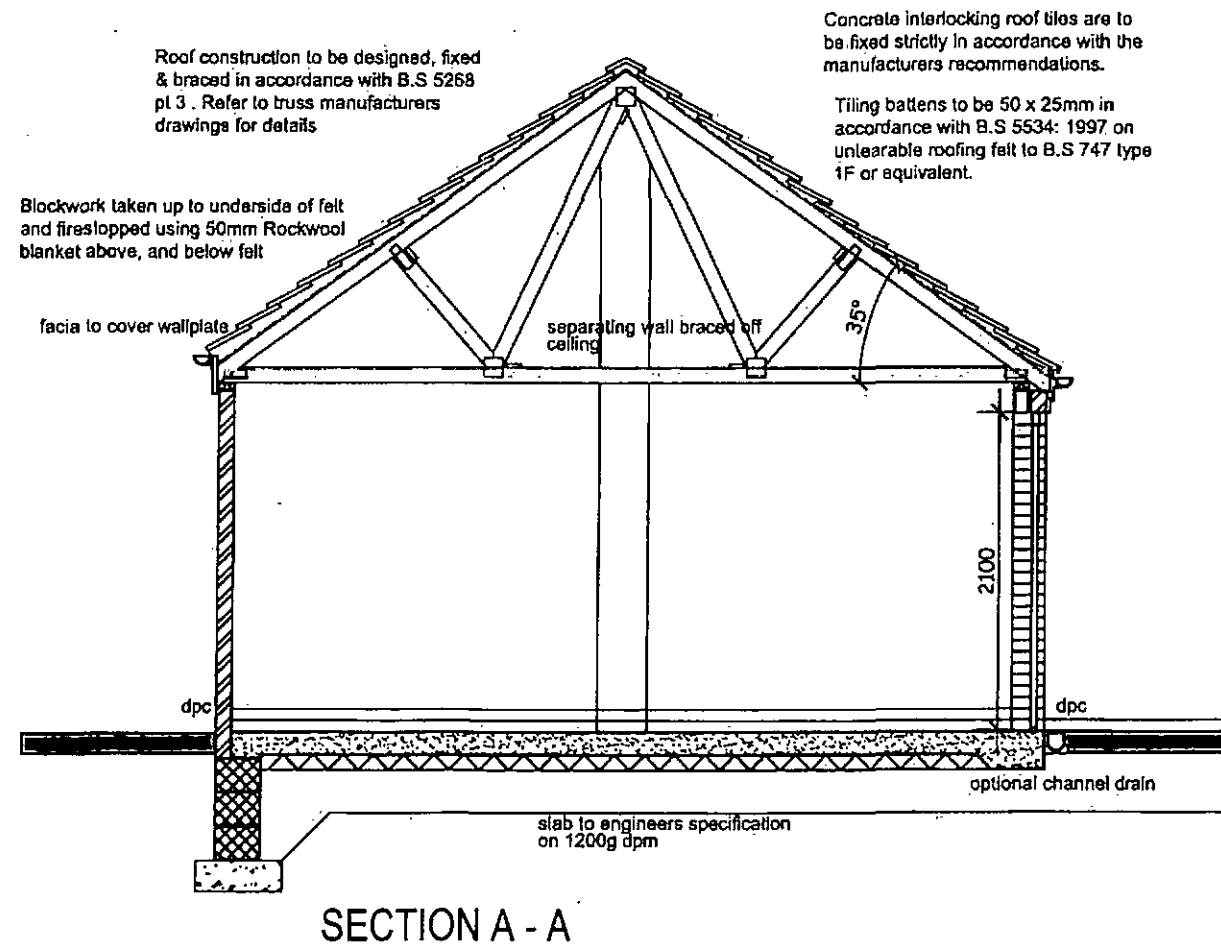
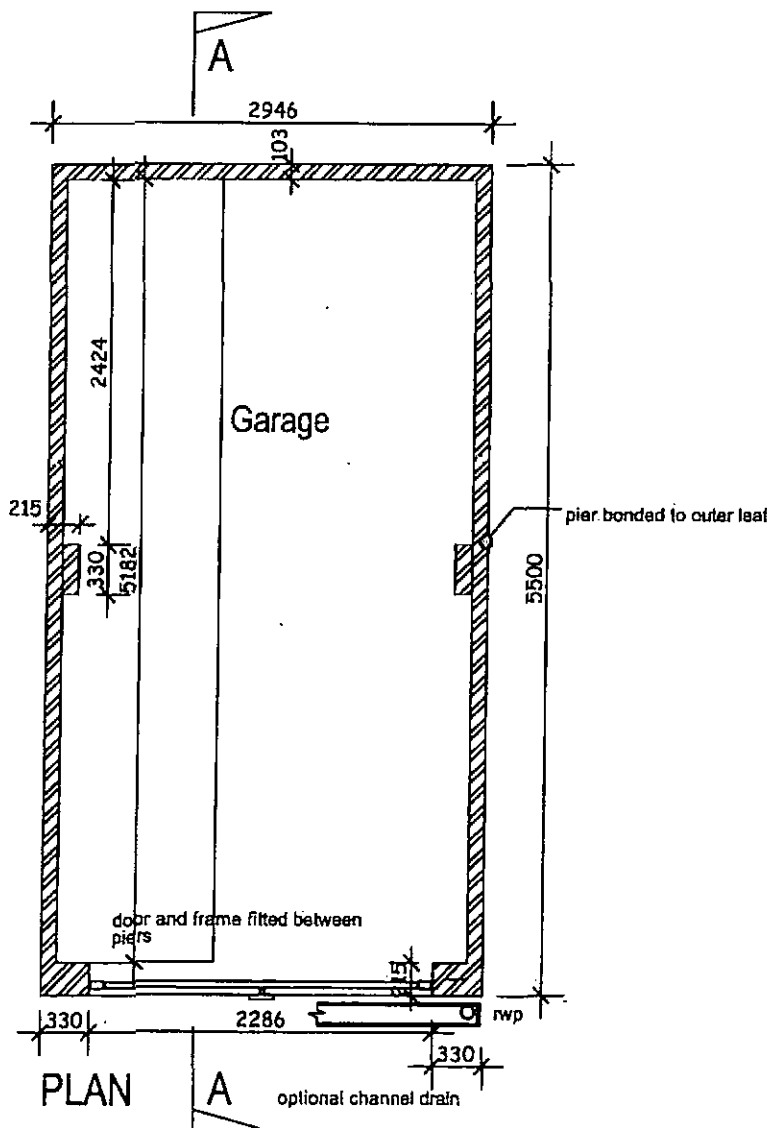
Drawing no. **13/405 -9** Rev. **C**



Do not scale from this drawing - Work to figured dimensions only. All dimensions to be checked on site prior to the execution of any work.

Where any discrepancy is found to exist within or between drawings and/or documents it should be reported to the technical department immediately.

Rev	Date	Revision	Initial



Concrete interlocking roof tiles are to be fixed strictly in accordance with the manufacturers recommendations.

Tiling battens to be 50 x 25mm in accordance with B.S 5534: 1997 on untearable roofing felt to B.S 747 type 1F or equivalent.



Gleeson Homes & Regeneration

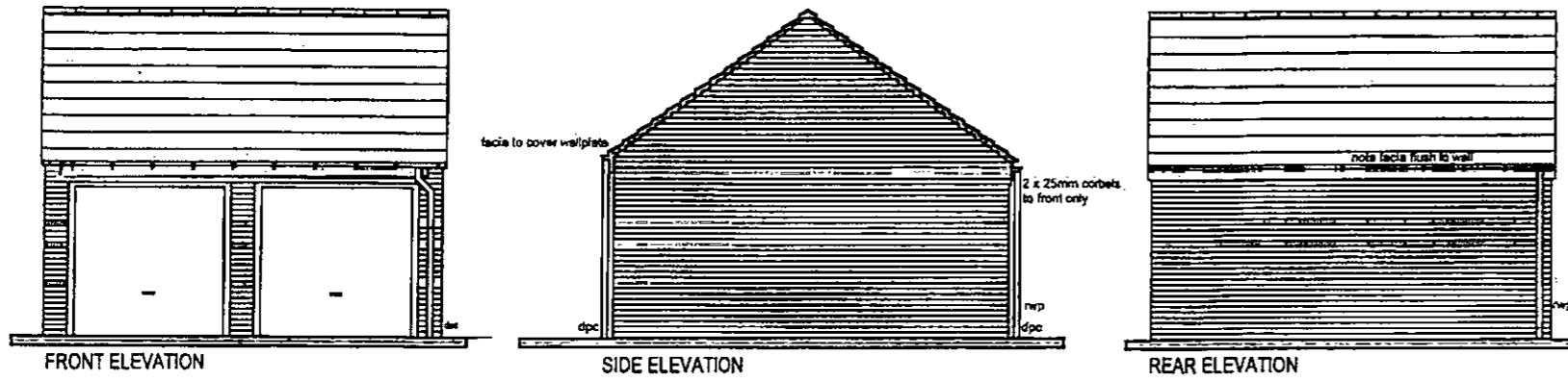
6 Europa Court, Sheffield Business Park, Sheffield, S9 1XE

Tel: 0114 261 2900 Fax: 0114 261 2939 Web: www.mjgleeson.com

Project
Standard Detail

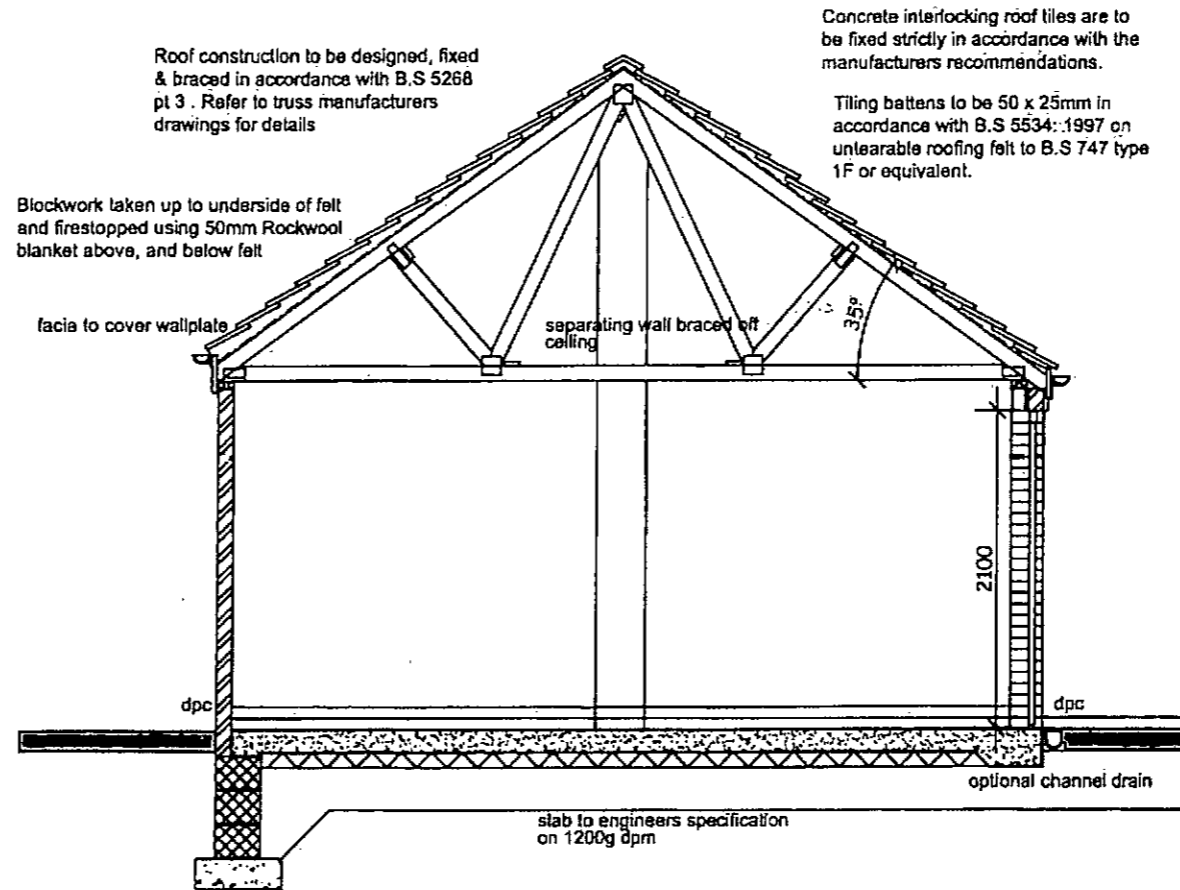
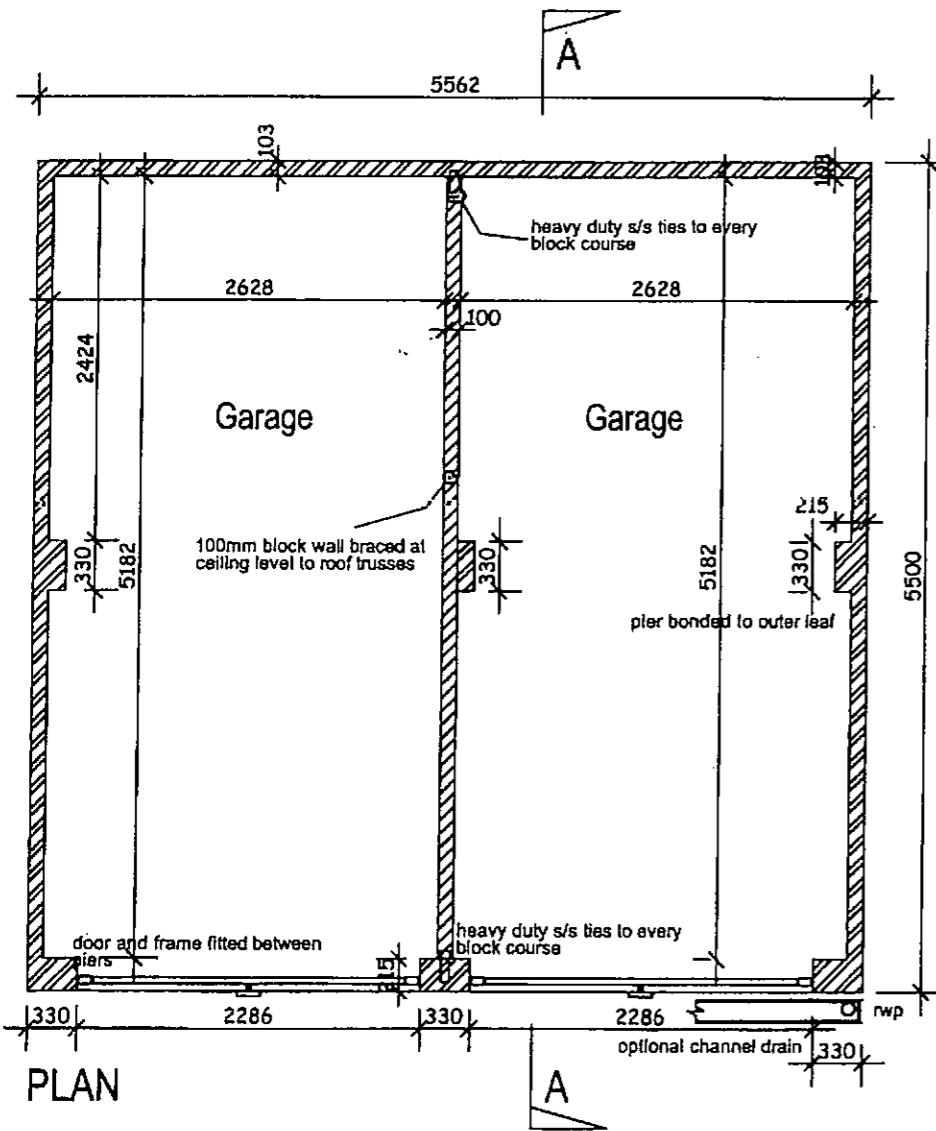
Title
Detached Single Garage

Job No —	Dwg No SD701	Stage —	Rev *
Scale 1:50/1:100	Date 18/10/2010	Drawn JC	



Do not scale from this drawing - Work to figured dimensions only. All dimensions to be checked on site prior to the execution of any work.

Where any discrepancy is found to exist within or between drawings and/or documents it should be reported to the technical department immediately.



Rev	Date	Revision	Initial



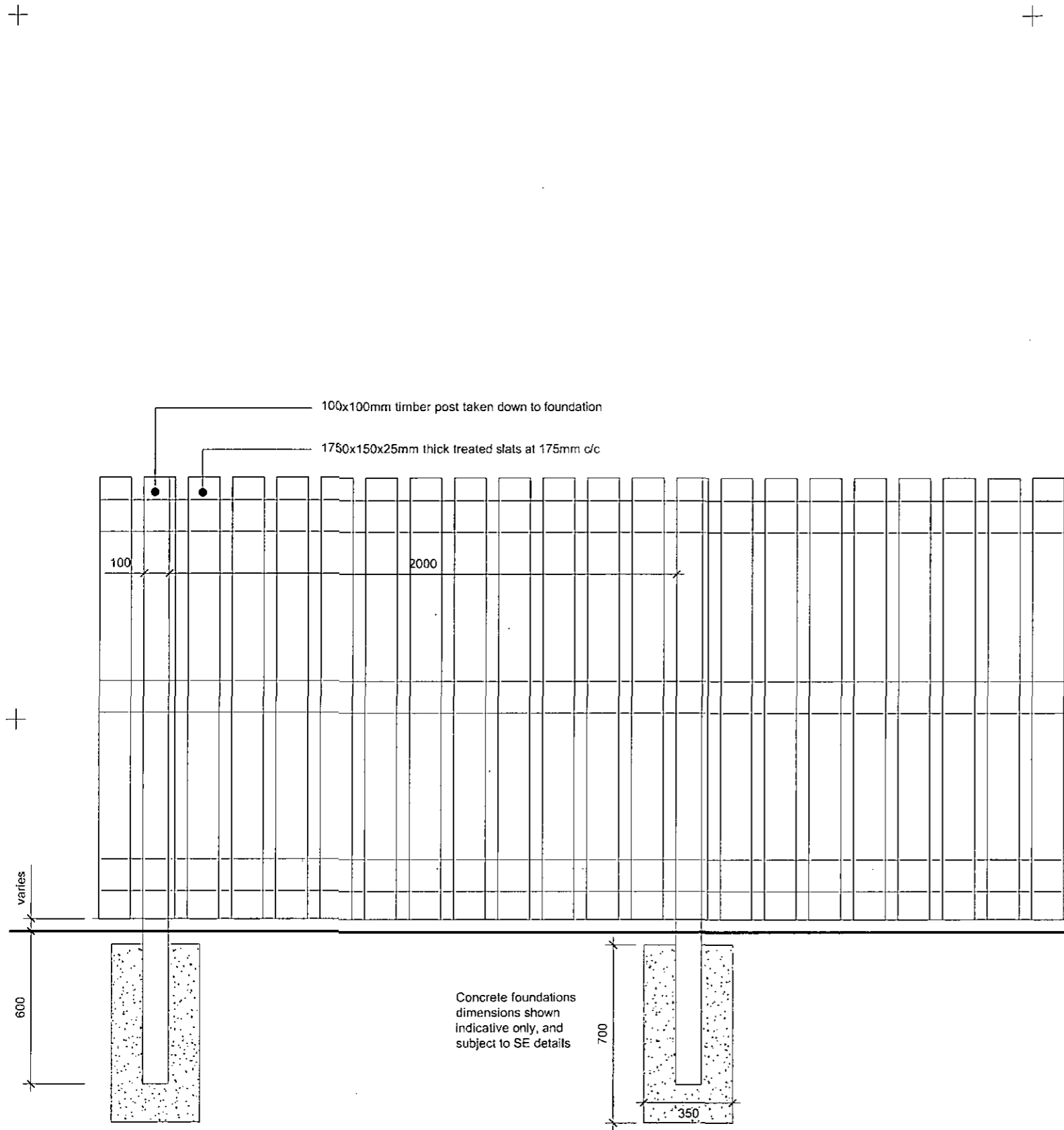
Gleeson Homes & Regeneration

6 Europa Court, Sheffield Business Park, Sheffield, S9 1XE
Tel: 0114 261 2900 Fax: 0114 261 2939 Web: www.mjgleeson.com

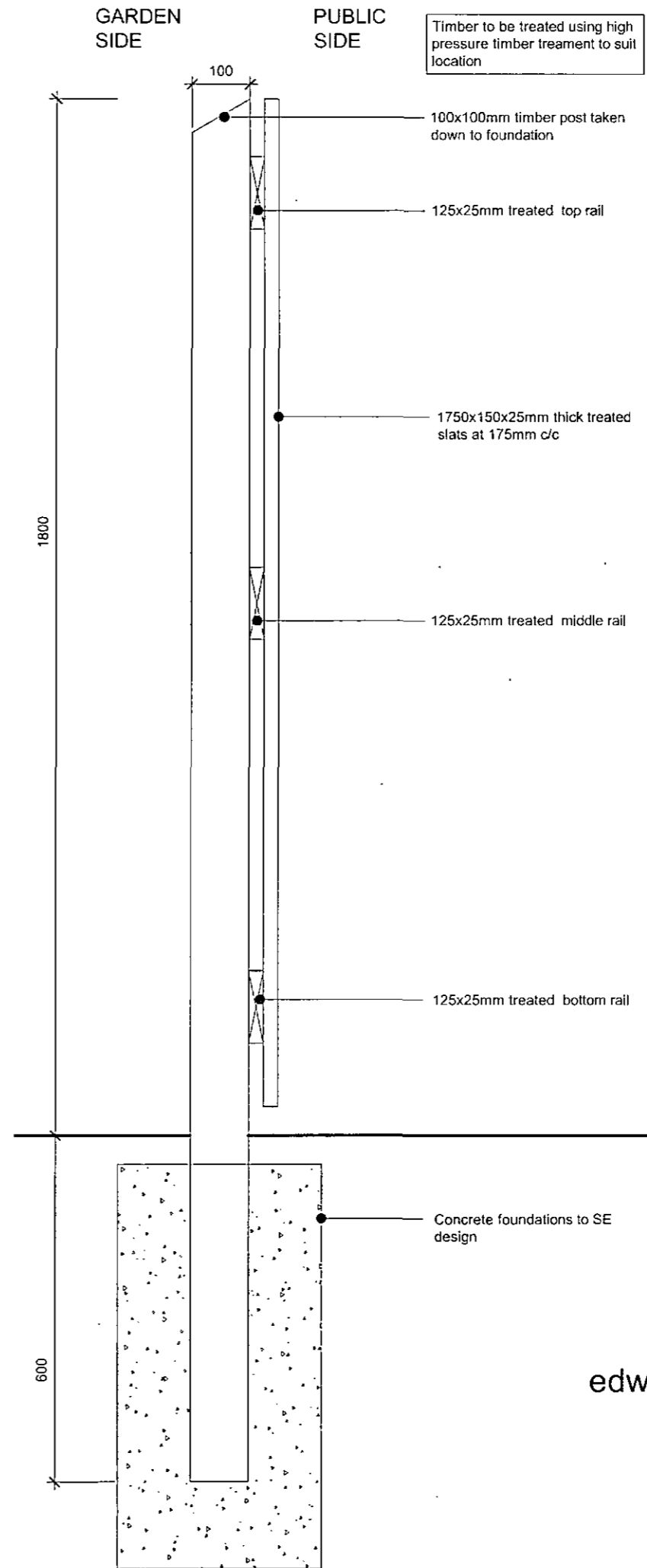
Project
Standard Detail

Title
Twin Garage

Job No —	Dwg No SD702	Stage —
Scale 1:50/1:100	Date 18/10/2010	Drawn JC
		Rev *



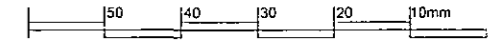
TYPICAL ELEVATION 1:20



TYPICAL SECTION 1:10

Notes:
 Sketch schemes may be based on plan information of unknown origin and is subject to verification and survey.
 Contractors must verify all dimensions on site before commencing any work or shop drawings. This drawing is not to be scaled. Use figured dimensions only.
 Building areas are liable to adjustment over the course of the design process due to ongoing construction detailing developments.

Subject to statutory approvals and survey.



A Post centres amended to 2m, and depth revised to min. 1/3 of post height 14.03.12
 revisions
 status Planning

edward architectural services ltd

prospect house 32 sovereign street leeds ls1 4bj t 0113 398 4000
 www.eas-architect.co.uk

project Standard Details

client Gleeson Homes & Regeneration

title Boundary Treatments
 1200mm High Timber Fence

drawn je checked ge date 13.04.11 scale varies@A3

job no 0282 drawing no SD-100 rev A