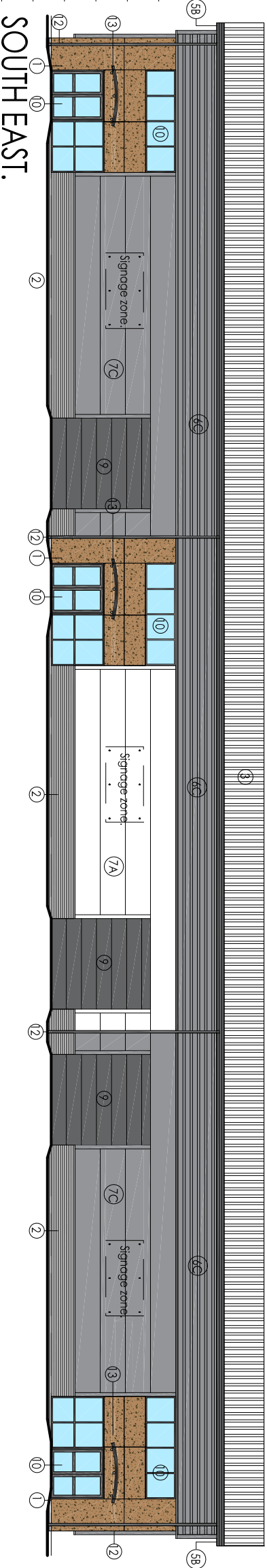
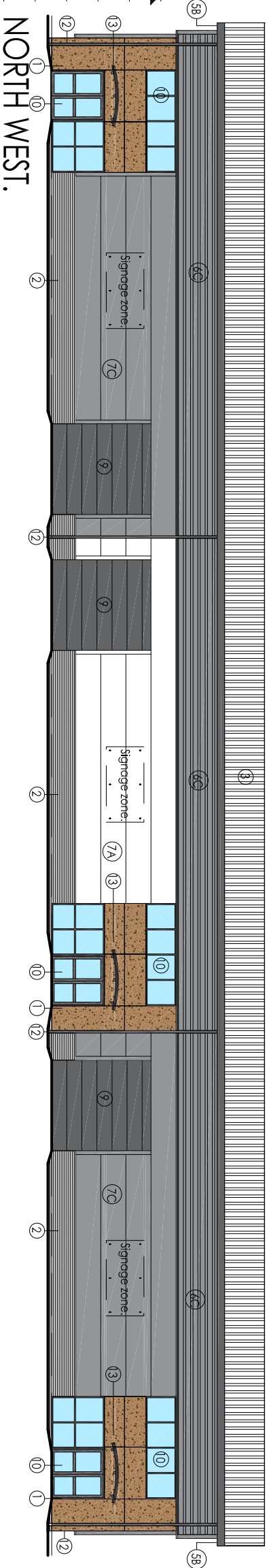


FLOOR PLAN. (1:200)

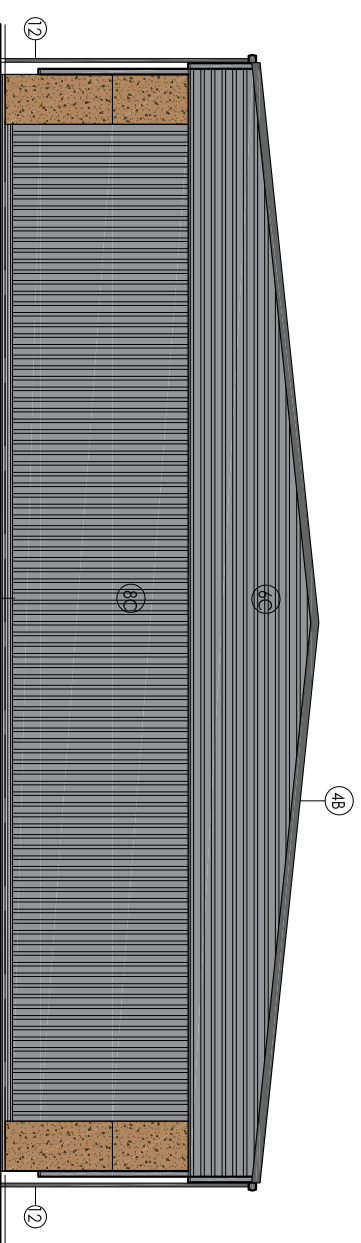


SOUTH EAST.

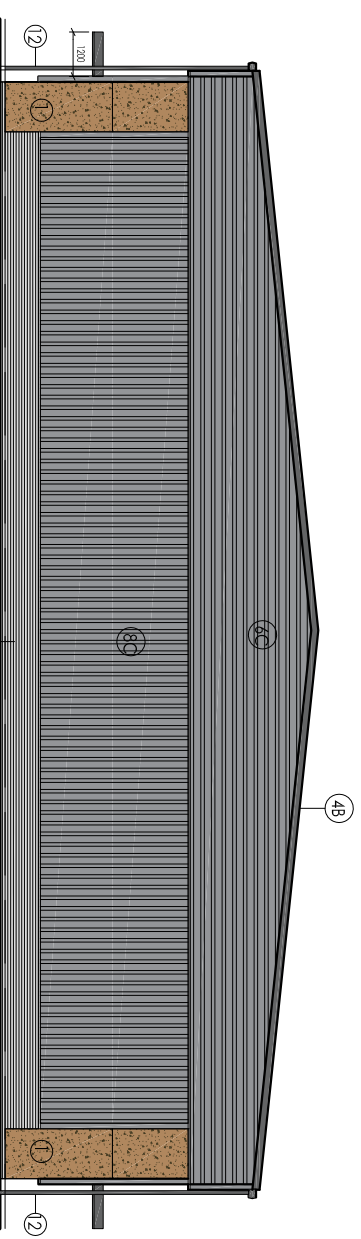


NORTH WEST.

UNIT 2



NORTH EAST.



SOUTH WEST.

This drawing is subject to Building Regulations Approval.

Materials and finishes.

- ① Walls - Trecco : Hordened Brown NM05
- ② Walls - Brick - Eschall Mottle Grey, coloured mortar (Light Grey)
- ③ Roofs - HF5200 coated steel - Taro Steel, Homtel
- ④ Fascias - HF5200 coated steel - Taro Steel, Anthracite
- ⑤ soffit - HF5200 coated steel - Taro Steel, Anthracite
- ⑥ Walls - High level cladding - HF9200 coated steel - Taro Steel, Alaska Grey
- ⑦ Walls - Flat panel cladding HF5200 coated steel - Taro Steel, Homtel white
- ⑧ Walls - Flat panel cladding HF5200 coated steel - Taro Steel, Alaska Grey
- ⑨ Loading Door - HF5200 coated steel - Taro Steel, Anthracite
- ⑩ Windows/Doors - Powder coated aluminium frames - Rd 7012 (Dark Grey) and Clearing - Crystal Blue
- ⑪ Fire Exit Doors - Glass polished steel - Rd 7012 (Dark Grey)
- ⑫ Rain Water Pipes - Rd 7012 (Dark Grey)
- ⑬ Cornice - Glass with Rd 7012 Structure (Dark Grey)

Do not scale from this drawing.

www.oneyefordesign.co.uk

Tel 01430 421480
Mob 07713 646411

PROJECT
PROPOSED DEVELOPMENT
CAPITOL PARK
BARNISLEY

DRAWING TITLE
UNIT 2
ELEVATION DETAIL

Scale	Drawn By	Checked By	Issue
A3	MW	MW	13/01/2017
Drawn By	Checked By	Issue	13/01/2017
MW	MW	13/01/2017	13/01/2017

MCW609