

04 Design Approach

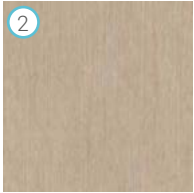
Facade & Materiality

4.2 Facade Study

Main Material Palette



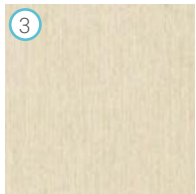
Fibre Cement Cladding
NCS S 3030-Y90R



Fibre Cement Cladding
NCS S 1005-Y10R



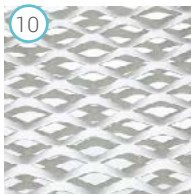
Extruded Aluminium
surround



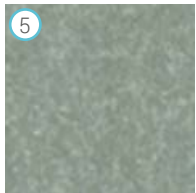
Fibre Cement Cladding
NCS S 3010-Y20R



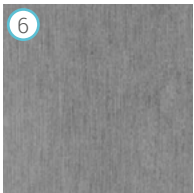
Fibre Cement Cladding
NCS S 3020-Y30R



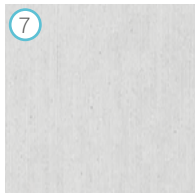
Mesh screen texture to
plant area



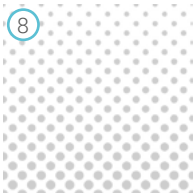
Fibre Cement Cladding RAL
NCS S 4005-B80G



Fibre Cement Cladding
NCS S 6005-B20G



Fibre Cement Cladding
NCS S 1502-Y



Dotted manifestation
gradient - White / light grey



04 Design Approach

Facade & Materiality

4.53 Facade Study

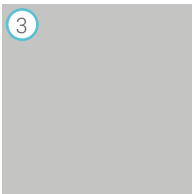
New Blue Light Canopy Material Palette



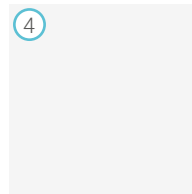
1
Timber to underside of canopy



2
Aluminium capping surround to canopy



3
Powder coated canopy structure



4
Obscured glazed fire exit doors



04 Design Approach

Facade & Materiality

4.4 Facade Study

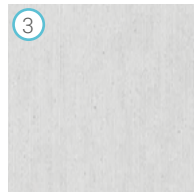
Reclad Existing Entrance



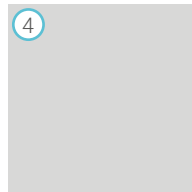
1
Timber to underside of canopy



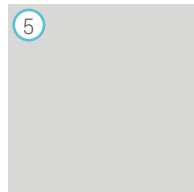
2
Aluminium capping surround to canopy



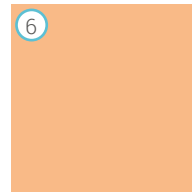
3
Fibre Cement Cladding
NCS S 1502-Y



4
Grey new fire exit doors



5
Re-rendered existing entrance to match in with existing



6
New stand off entrance signage coloured



04 Design Approach

Facade & Materiality

4.5 Facade Precedent Imagery

We carried out a precedent study to understand how fibre cement board panels could be used in a more playful way to best reflect the design concept.

We also wanted to understand the most appropriate materiality that would best suit the context and the proportions of the site.



Conceptual Design/ James Barber Architects

The conceptual design of this vernacular although very different from our proposed scheme, helped to provide a good precedent for the proportions of a relatively tall single storey building.

The heavier bottom element is offset by the much lighter top element and is grounded by a darker plinth which helps to create a desired balance for the facade.

04 Design Approach

Facade & Materiality



Vita Contemplativa / GRUPPE

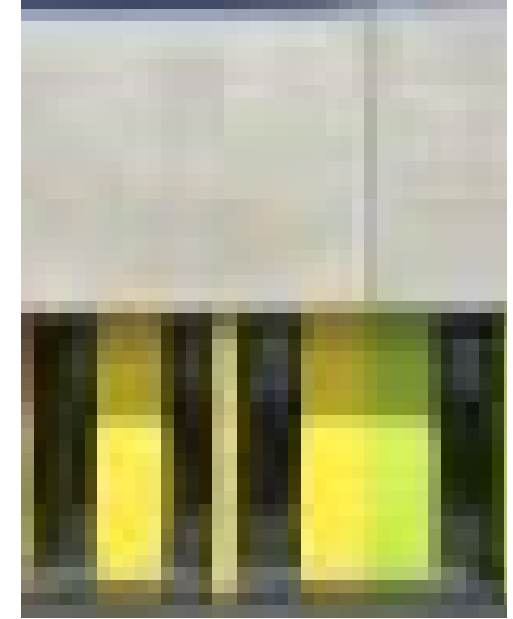
GRUPPE installed totems of colourful building blocks on the streets of Clerkenwell during the London district's annual design festival. GRUPPE used five different shades of fibre cement board, all chosen to match the tones of the existing streetscape.

The playful geometric shapes were a key element that we felt would reflect our concept well and could be produced in a modular economic way.



Colegio Público de Educación Infantil y Primaria / Código Arquitectura

The context to this proposed building was very modular and monolithic, the way that the proposed building divides itself into an upper monolithic element with a more dynamic vertical facade helps to ground the building well into the site and add interest to street level for the public and creates a more active facade.



04 Design Approach

Landscaping Strategy

4.6 Proposed Landscaping

At present on the existing site the area is currently relatively congested and not very pedestrian friendly with minimal defined routes / seated areas for patients and users to utilise. As Phase 1 predominantly looks at the new vehicular and pedestrian routes, this has helped to guide our landscaping strategy for Phase 2 so that the 2 phases will work well together.

As has been discussed with the planning officer, we will be retaining the prominent line of cherry blossom trees that front Gawber Road as these bring an aesthetic appeal to the area, assist with the surrounding noise pollution and help to provide privacy for the proposed EDCAU from the main road.

As there is already a green buffer to the North of the site, we will be adding to this by increasing the defensive planting i.e bushes etc to again further reiterate the sense of privacy for the unit.

We are proposing the perimeter of the scheme to be offset with a small gravel surround with some easy to maintain plants to help to ground the building and discourage people from approaching the building too close due to the sensitive nature of the building.

Due to the redesign of the surrounding roads i.e ambulance approach / blue light entrance we will ensure that there are bollards in place as a security prevention surrounding the proposed blue light entrance and also surrounding the main entrance.

To tie the proposed landscaping into the existing context, plants and shrubs currently on the site have been proposed which provides continuity. Similar species of plant will also require the same levels of maintenance which are already provided on the site.



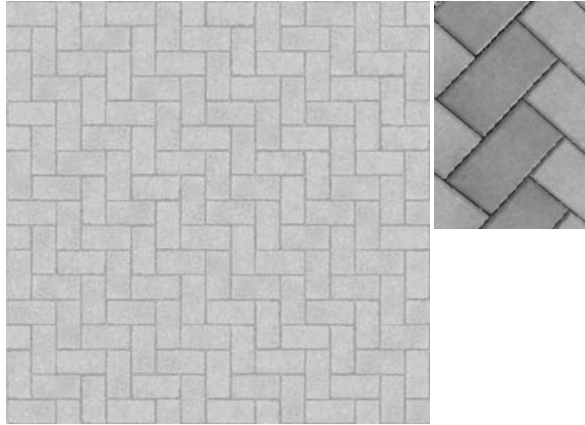
04 Design Approach

Landscaping ideas

① Existing cherry blossom trees retained



② New proposed hardscaping



③ New bollards



④ Proposed new defensive planting



⑤ Gravel offset to building



04 Design Approach

Visual Plan

4.7 Proposed Visuals



1. View upon approach to main entrance
2. Approach along Gawber Road
3. View from residential houses
4. Approach from main hospital vehicular route
5. Approach to blue light route
6. Close up facade view
7. Close up facade view pathway
8. Aerial view blue light entrance

04 Design Approach

Visual 1



04 Design Approach

Visual 2



04 Design Approach

Visual 3

