

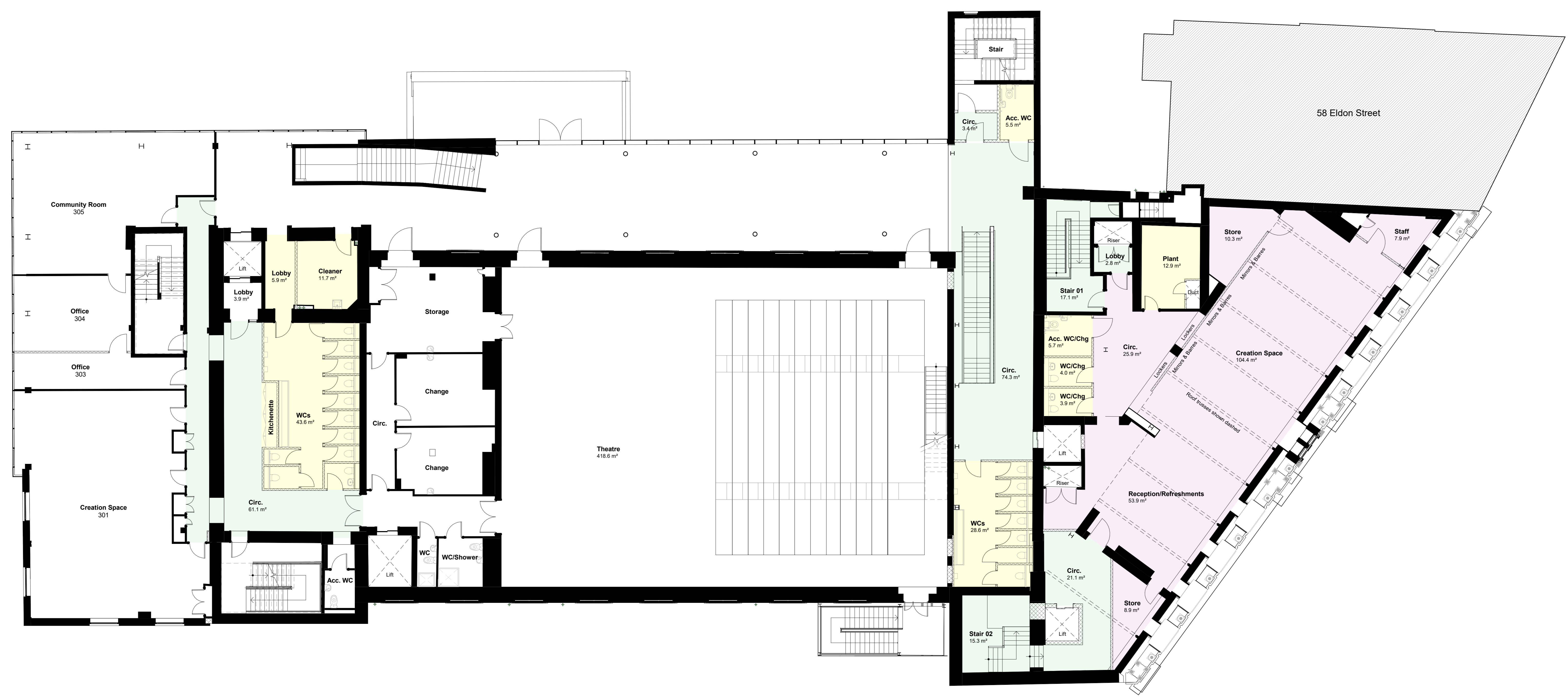
**Notes**  
 Check all dimensions on site. Do not scale from this drawing.  
 Report any discrepancies and omissions to HLM Architects  
 This drawing is Copyright ©

**Accommodation**

- Lettable Space
- Creation Space
- Office Space
- Flexible Space
- Ancillary
- Circulation

The floor area will be opened up to provide a space for a Civic managed creation space with a new accessible entrance accessed from Eldon Street. The activity space will be provided with toilets and refreshment facilities. The creation space facility would be used throughout the day and evenings.

A new staircase will be introduced from second to third floor linking the Eldon Street entrance with the Hanson Street facilities. New toilet blocks will be introduced to accommodate the new staircase.



Rev	Description	Date	By	Chk
P01	ISSUED FOR PLANNING	06/05/2022	MBD	AJT
Revisions				
Project S2 INFORMATION				

**11-1177-01  
 BARNSELY CIVIC**

Client  
**BARNSELY CIVIC  
 ENTERPRISE**

Title  
**Third Floor Proposed  
 Plan**

Drawing No.	Revision
BCE-HLM-01-03-DR-A-00003	P01

Scale	Drawn
1: 100 @A0	MBD
Date	Checked
20/04/2022	AJT

