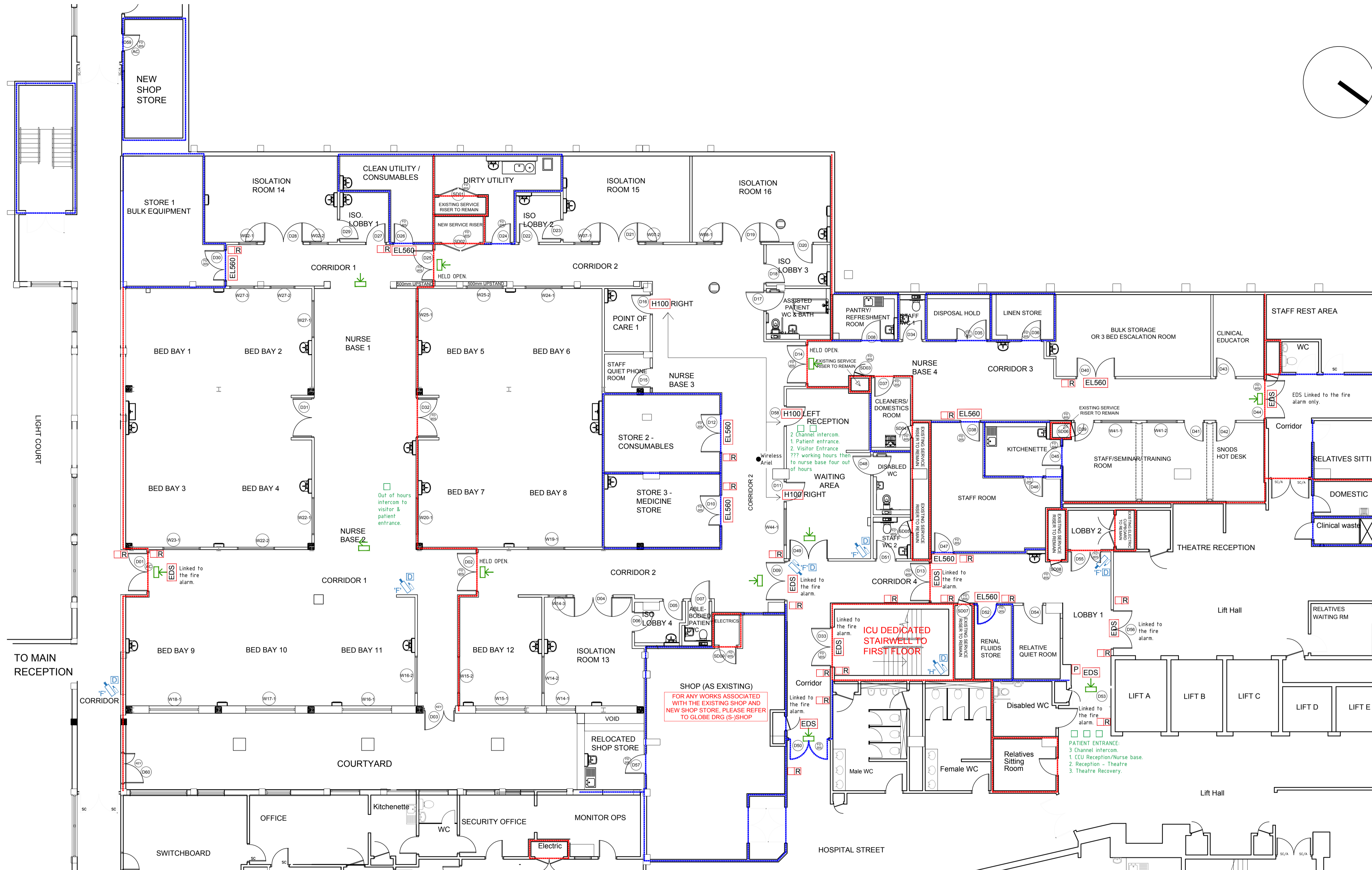


Drawing status

Drawn by AP Size A1 Scale 1:100

Notes	Status	Rev	Date
FEASIBILITY STUDY	F	-	
AMENDMENTS: - fire lines amended to suit the existing fire strategy. - door notes amended.	T	A	
TENDER ISSUE	T	A	07/05/2021
AMENDMENTS: 30mins fire line added to Pantry/Refreshment Room	T	B	12/05/2021
FINAL TENDER ISSUE FOLLOWING THE REVIEW	T	B	20/05/2021
AMENDMENTS - 60mins fire line added alongside the existing corridor - D01 to be 60min fire rated - Ironmongery codes and notes added to drawing. All codes are from DHS schedule. A key has been added.	T	C	09/06/2021



Drawing status annotation
P-Preliminary T-Tender D-Design (post preliminary) C-Construction As-As Built

Client
BARNSELY HOSPITAL NHS
FOUNDATION TRUST

Project title
CRITICAL CARE UNIT

Project no
170-033
Drawing title
PROPOSED FIRE STRATEGY PLAN

GROUND FLOOR CC AND TR
AREAS

Drawing no
CC-TR(28)-01
Status
T
Revision
C

KEY

- EL560 Wired system with fob reader.
- H100 Wireless door locks. Left 1506. Right 1505.
- Wireless Ariel - wireless H100 sender/ariel
- EDS locks linked to fire alarm & require fire alarm interface.
- P Denotes push to exit on EDS doors.
- R Denotes reader/fob for EL560 & EDS doors.
- EL560 - Electric lock
- H100 - Wireless door lock with in built reader/fob.
- CCTV
- Intercom

FIRE STRATEGY KEY

- 30 MINUTE FIRE RATING
- 60 MINUTE FIRE RATING
- FD 30S 30MIN FIRE RATED DOOR
- FD 60S 60MIN FIRE RATED DOOR
- Denotes LOCATION OF FIRE EXIT SIGNS (ARROW INDICATES DIRECTION WHICH WILL BE INDICATED ON SIGN)