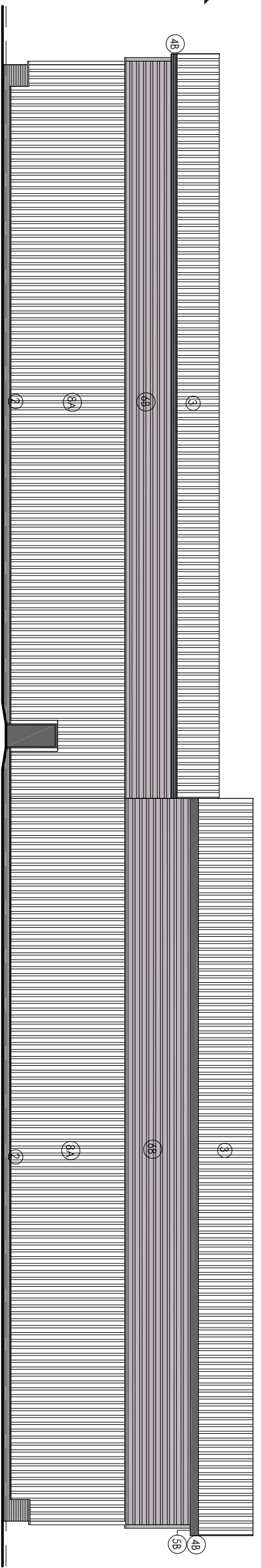
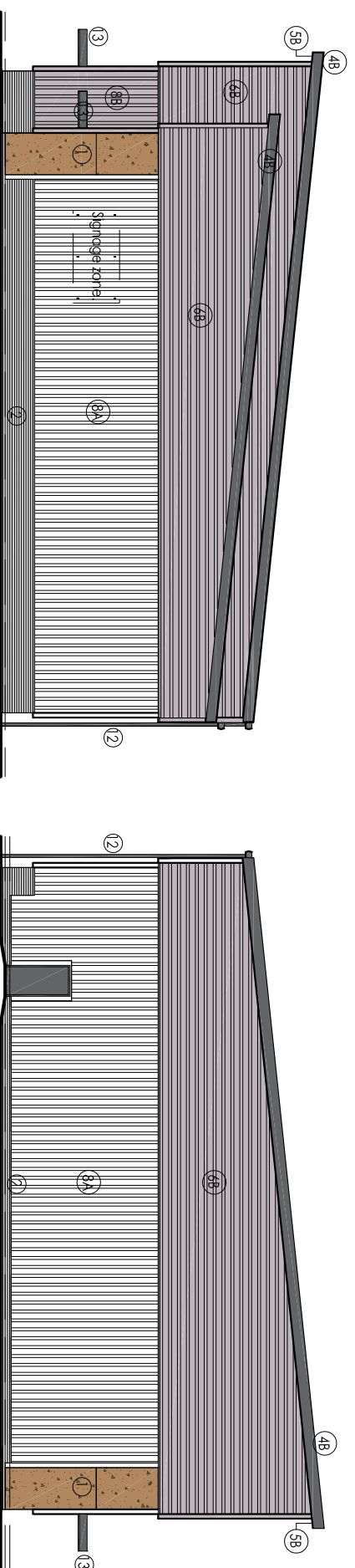


GROUND FLOOR PLAN. (1:200)

UNIT 3

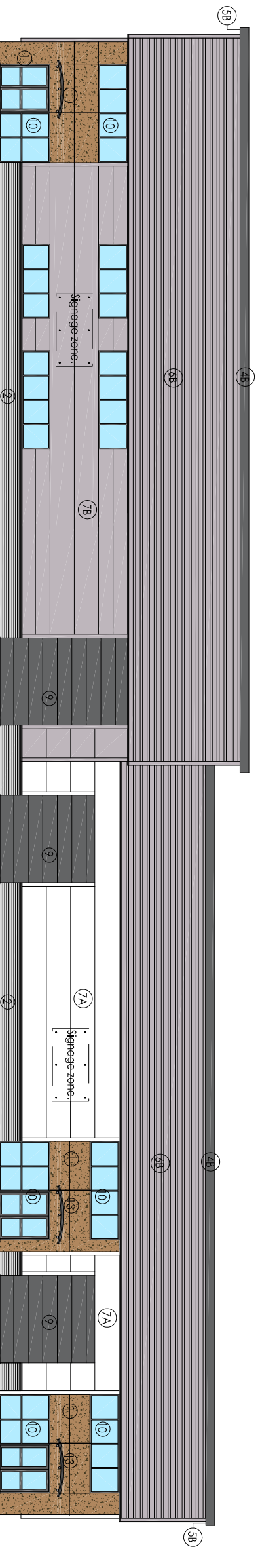


SOUTH - EAST.



SOUTH WEST.

NORTH EAST.



NORTH WEST.

- This drawing is subject to Building Regulations Approval.
- Materials and finishes.**
- ① Wall - Respo - Hardened Brown NMS5
 - ② Wall - Slick - Essential Maple Grey, coloured mortar (Light Grey)
 - ③ Roofs - HF5200 coated steel - Tiro Steel, Homlet
 - ④ Facade - HF5200 coated steel - Tiro Steel, Anthracite
 - ⑤ Soffit - HF5200 coated steel - Tiro Steel, Anthracite
 - ⑥ Wall - High level cladding - HF5200 coated steel - Tiro Steel, Pure Grey
 - ⑦ Wall - Flat panel cladding HF5200 coated steel - Tiro Steel, Homlet white
 - ⑧ Wall - Flat panel cladding HF5200 coated steel - Tiro Steel, Pure Grey
 - ⑨ Wall - Steel cladding HF5200 coated steel - Tiro Steel, Homlet white
 - ⑩ Wall - Steel cladding HF5200 coated steel - Tiro Steel, Pure Grey
 - ⑪ Loading Door - HF5200 coated steel - Tiro Steel, Anthracite
 - ⑫ Windows/Doors - Polyester coated aluminium frames - Rd 7012 (Dark Grey) and Glazing - Crystal Blue
 - ⑬ Fire Bar Doors - Glass pointed steel - Rd 7012 (Dark Grey)
 - ⑭ Rain Water Pipes - Rd 7012 (Dark Grey)
 - ⑮ Canopy - Glass with Rd 7012 Structure (Dark Grey)

Do not scale from this drawing.

www.oneyefordesign.co.uk

Tel 01430 421480
Mob 07713 646411

PROJECT
PROPOSED DEVELOPMENT
CAPITOL PARK
BARNLSLEY

UNIT 3
ELEVATION DETAIL

Scale	Drawn By
A3	MCW
1:200 (2017)	13/07/2017
Checked By	Site Checked
	Revision

MCW610