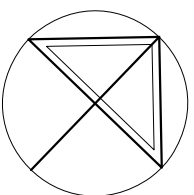


FIRST FLOOR PLAN.



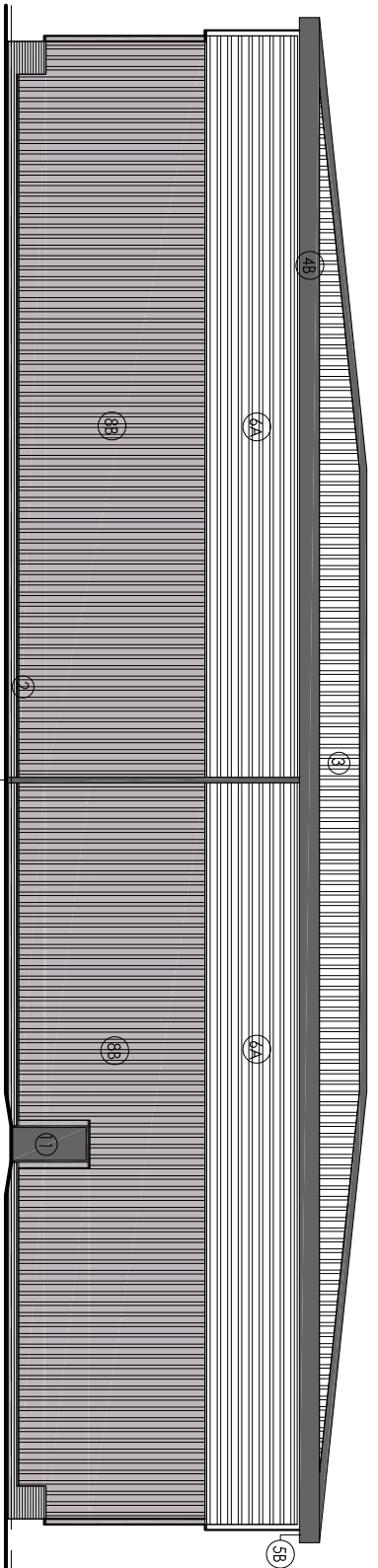
GROUND FLOOR PLAN. (1:200)

# UNIT 6

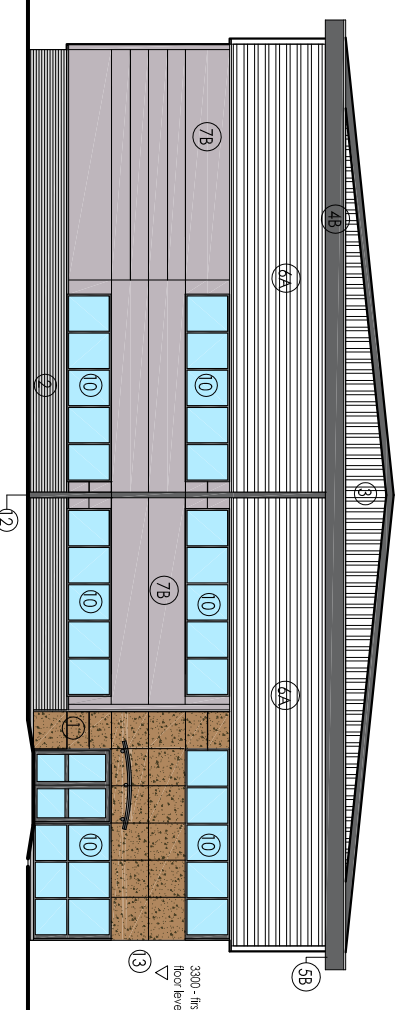
This drawing is subject to Building Regulations Approval.

**Materials and Finishes.**

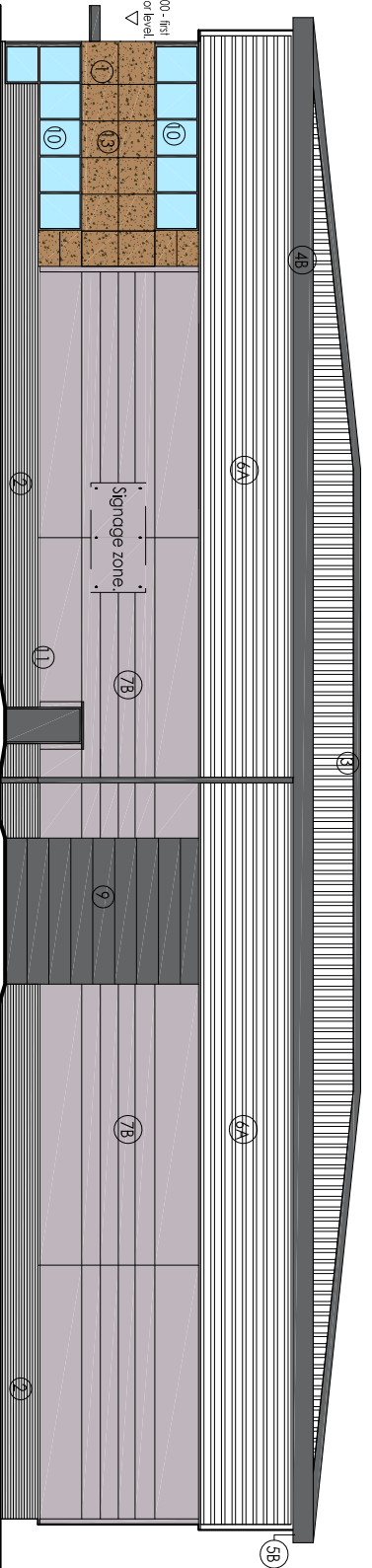
- ① Walls - Trepro - Hardened Brown MK05
- ② Walls - Brick - Eternal Marble Grey, coloured mortar (light Grey)
- ③ Roofs - HF5200 coated steel - Tolo Steel, Hornlei
- ④ Facades - HF5200 coated steel - Tolo Steel, Anthracite
- ⑤ Sills - HF5200 coated steel - Tolo Steel, Anthracite
- ⑥A Walls - High level cladding - HF5200 coated steel - Tolo Steel, Hornlei white
- ⑦B Walls - Flat panel cladding HF5200 coated steel - Tolo Steel, Pure Grey
- ⑧B Walls - Steel Cladding HF5200 coated steel - Tolo Steel, Pure Grey
- ⑨ Loading door - HF5200 coated steel - Tolo Steel, Anthracite
- ⑩ Windows/Doors - Polyester coated aluminum frames - Rd 7012 (Dark Grey) and Glazing - Crystal blue
- ⑪ Fire Exit Doors - Glass paned steel - Rd 7012 (Dark Grey)
- ⑫ Rain Water Pipes - Rd 7012 (Dark Grey)
- ⑬ Canopy - Glass with Rd 7012 Structure (Dark Grey)



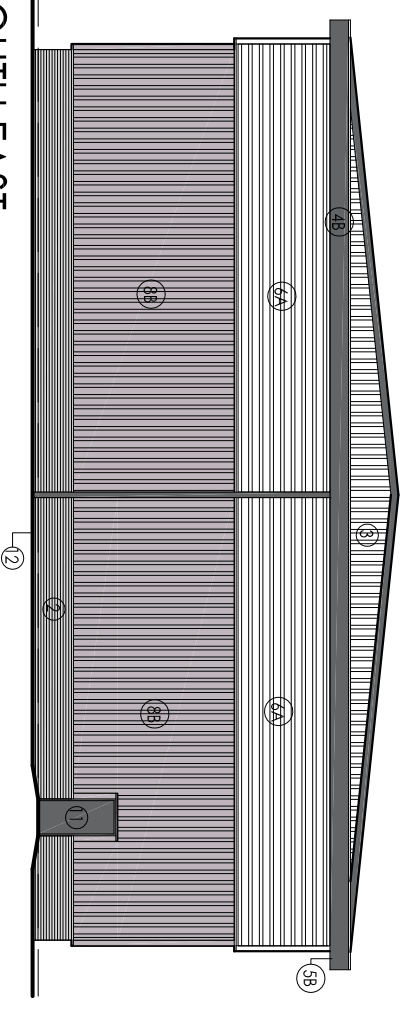
NORTH EAST.



NORTH WEST.



SOUTH WEST.



SOUTH EAST.

Do not scale from this drawing.

[www.oneyefordesign.co.uk](http://www.oneyefordesign.co.uk)

Tel 01430 421480  
Mob 07713 646411

PROJECT  
PROPOSED DEVELOPMENT  
CAPITOL PARK  
BARNLSLEY

DRAWING TITLE  
UNIT 6  
ELEVATION DETAIL

Drawn By	MW
Scale	A3
Scale	1:200 (2017)
Checked By	SM
Date Checked	12/11/17
Revision	

Drawing No. MCW613