

This map is reproduced from Ordnance Survey material with the permission of Ordnance Survey on behalf of the copyright. Unauthorised reproduction infringes Crown copyright and may lead to prosecution or civil proceedings. 100022067 (2006)

COMPUTER FILE NAME

BARNLSLEY
Metropolitan Borough Council
Highways & Engineering

Scale	Drawn	Checked	Date	Rev.	By	Amendments
H	AS	Shown	Sept. 2008	A	ELP	None
V	ELP				ELP	None
					ELP	None
					ELP	None

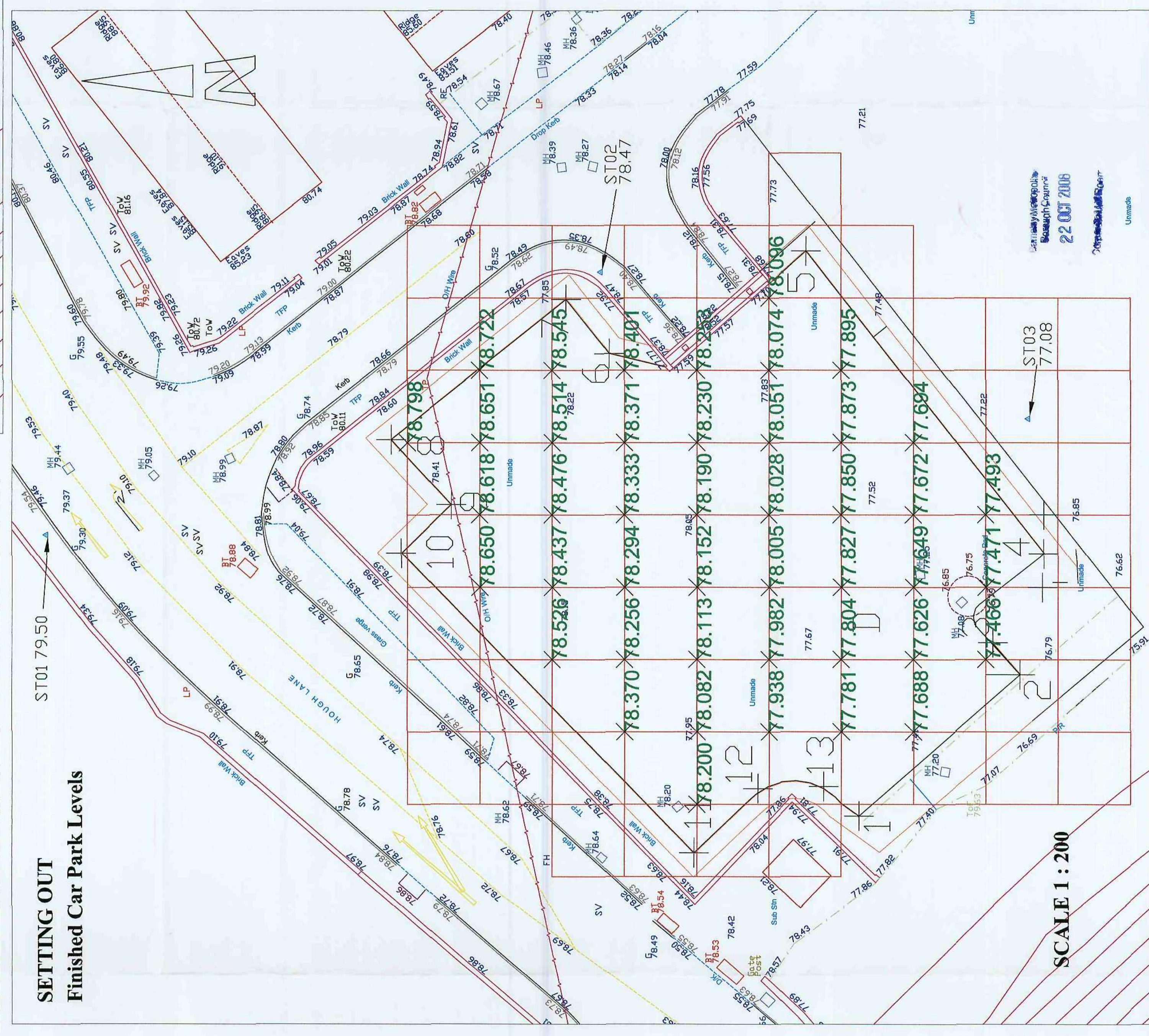
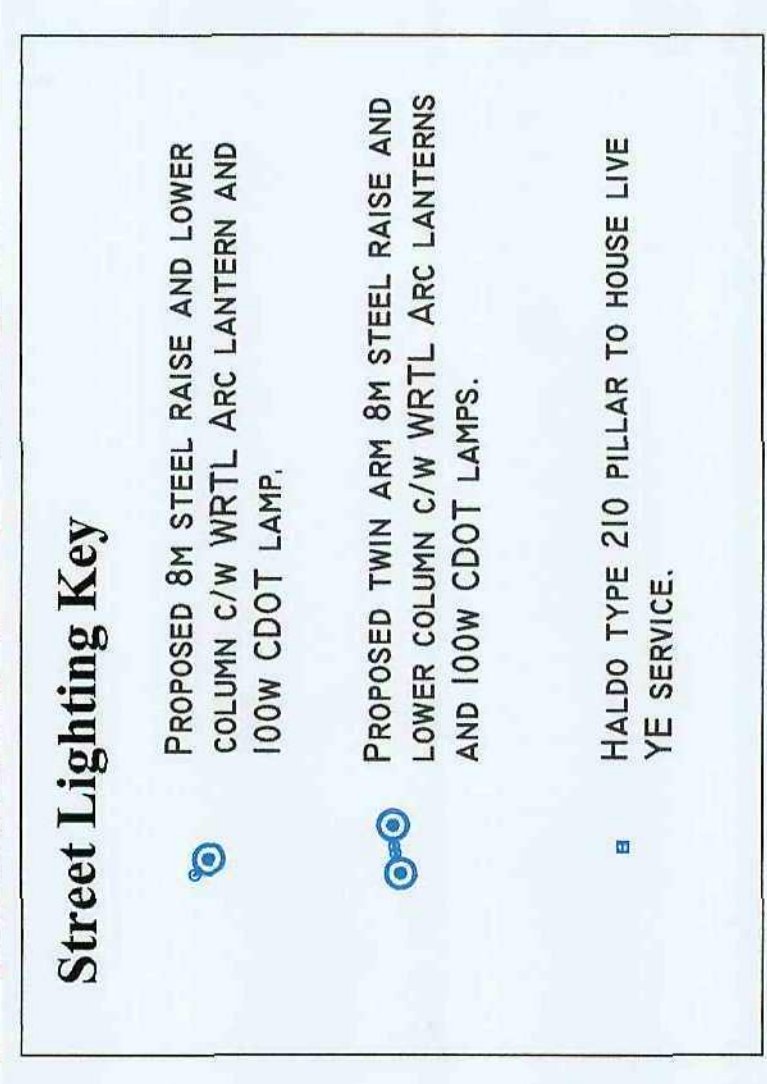
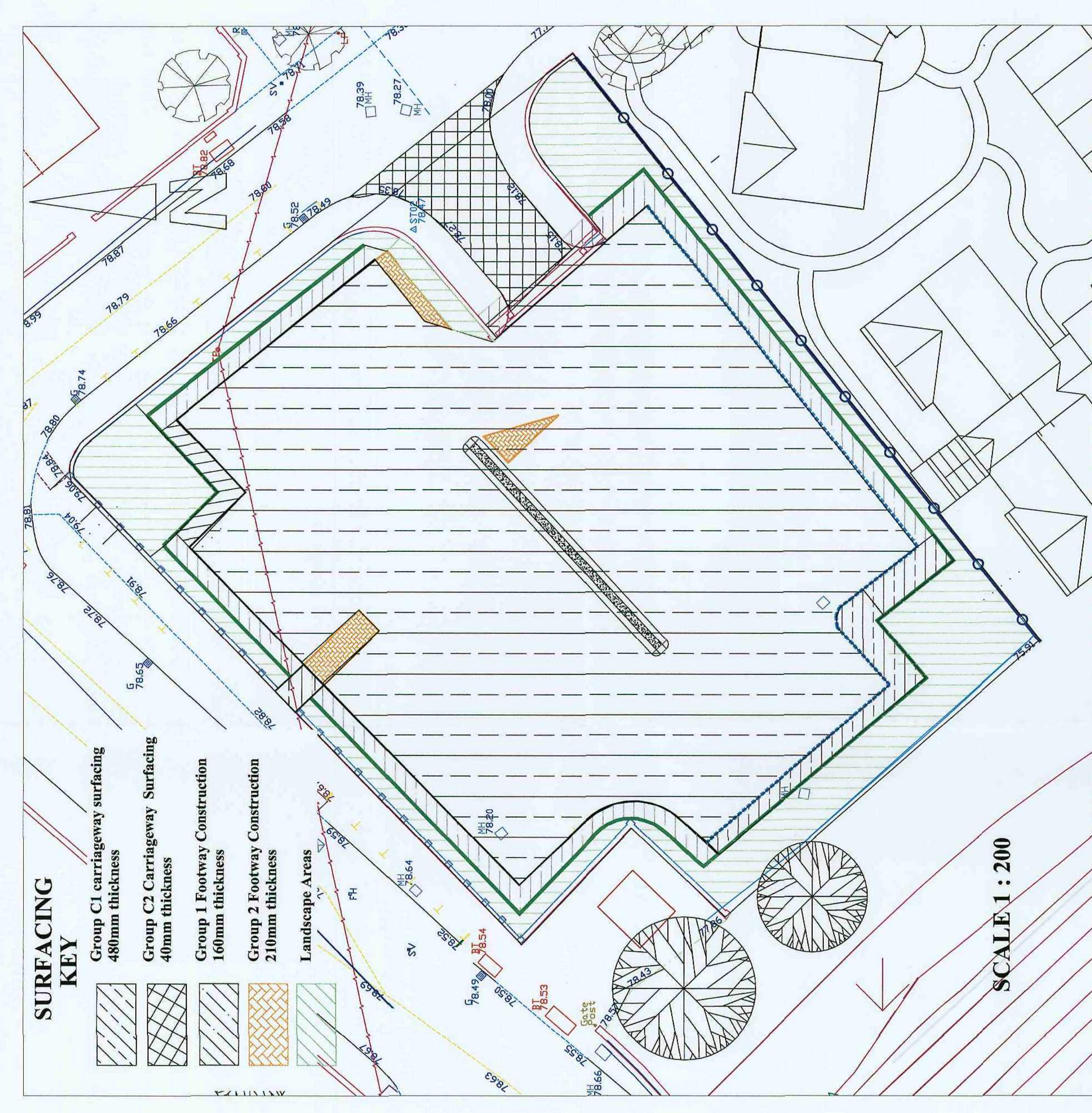
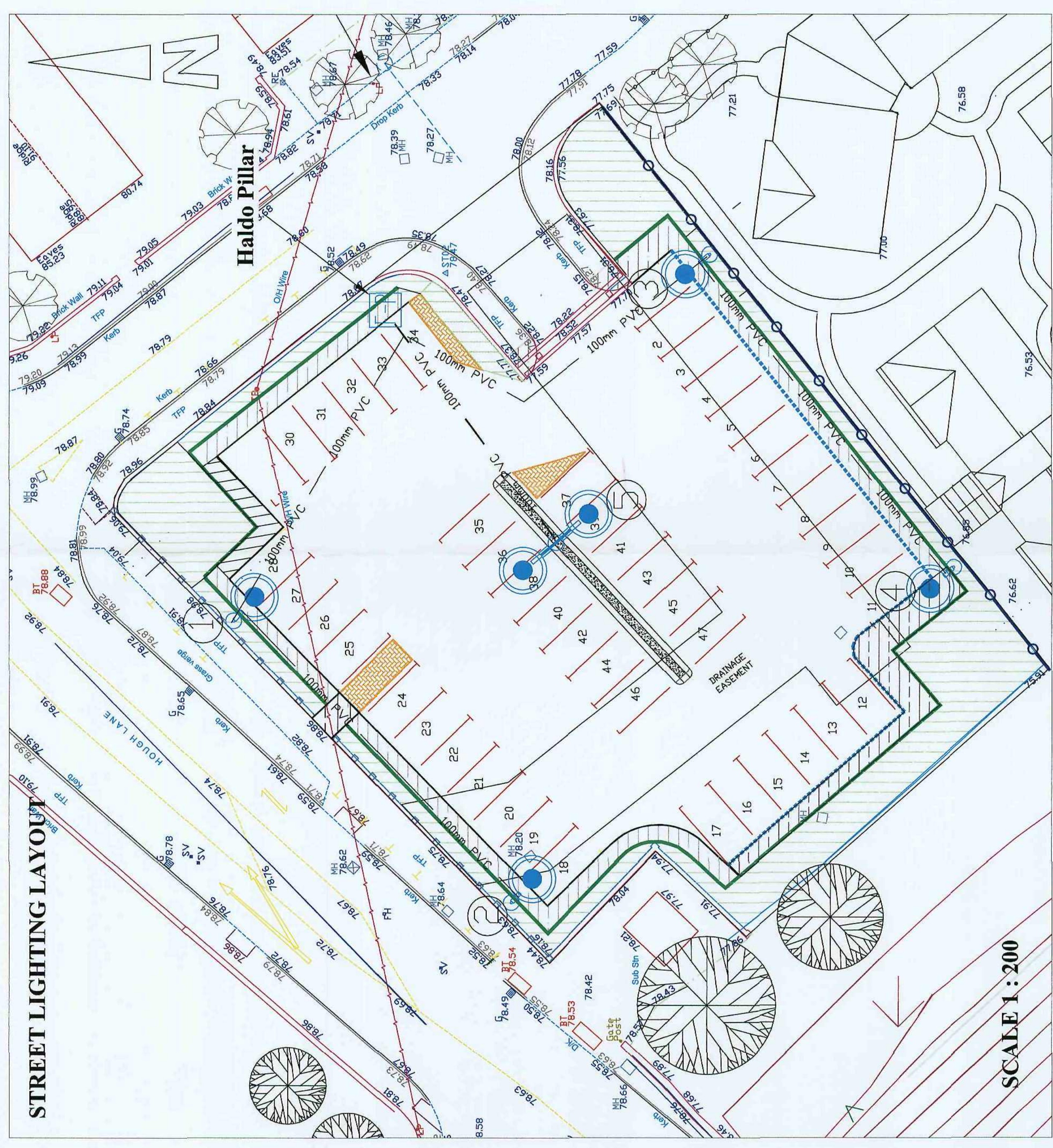
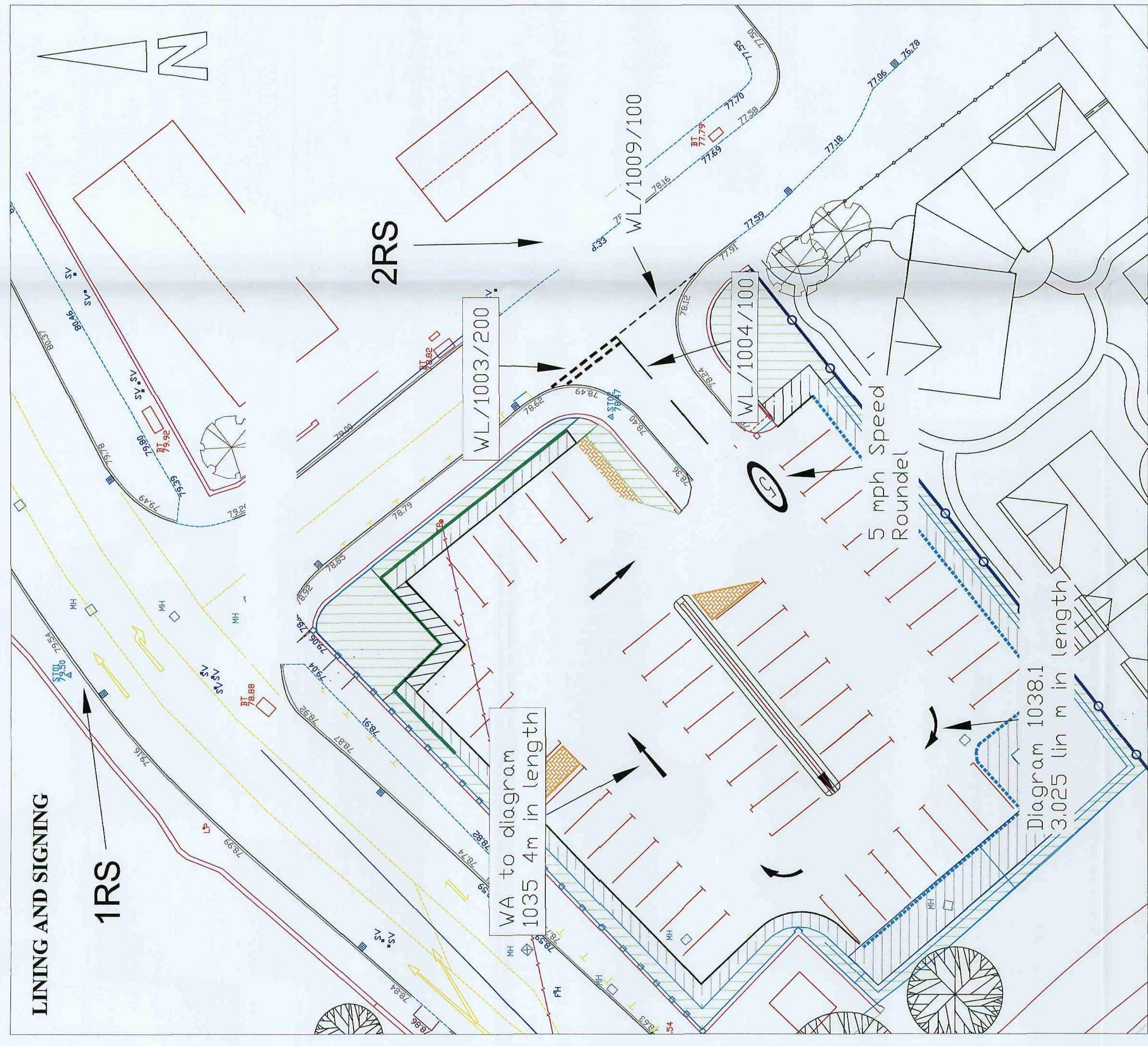
Drawing No. HM/B6096/P&R/6

A.J. Carnall BSc., M.Eng., M.I.C.E., M.I.H.T.,
Assistant Director, Highways & Engineering,
Westgate Plaza One, Westgate,
Barnsley S70 2DR.
Tel. (01228) 770770 Fax. (01228) 772222

Wombwell Park and Ride

Scheme Drawing 1 - Site Clearance, Drainage and Ducting, Kerbing and Edging, Final Layout

22 OCT 2008



STATION CO-ORDINATES

Reference	East	North	Elevation
ST01	438888.626	402484.927	79.50
ST02	438906.777	402446.649	78.47
ST03	438896.720	402417.088	77.08
1	438870.047	402430.036	77.892
2	438878.923	402417.565	77.387
3	438881.172	402419.580	77.438
4	438887.477	402415.990	77.340
5	438908.219	402432.446	78.022
6	438901.156	402446.035	78.430
7	438904.903	402449.027	78.620
8	438895.206	402461.120	78.835
9	438890.712	402456.954	78.679
10	438887.360	402460.357	78.799
11	438866.658	402440.203	78.299
12	438870.698	402435.933	77.941
13	438870.056	402429.983	77.899

COMPUTER FILE NAME: **HMB6096/P&R/7**

BARNLSLEY
Metropolitan Borough Council
Highways & Engineering

Wombwell Park and Ride
Scheme Drawing - Setting Out, Street Lighting, Surfacing, Lining and Signing

Date	Rev.	By	Amendments
22.08.2008	A	ELP	Street Lighting columns amended Verge area adjacent to slip 24 deleted
22.08.2008	A	ELP	

Date: **22.08.2008**
File: **HMB6096**

Scale: **H As Shown**
Drawn: **ELP**
Checked: **ELP**

Rev. **A** By **ELP** Date **22.08.2008**

Amendments: **Street Lighting columns amended**
Verge area adjacent to slip 24 deleted

A.J. Camall BSc., M.Eng., M.I.C.E., M.I.H.T.,
Assistant Director, Highways & Engineering,
Westgate Plaza One, Westgate,
Barnsley S70 2DR.
Tel: (01226) 770770 Fax: (01226) 772222

This map is reproduced from Ordnance Survey material with the permission of Ordnance Survey on behalf of the Controller of Her Majesty's Stationery Office. Any copyright and may lead to prosecution or civil proceedings. 10002264 (2006).