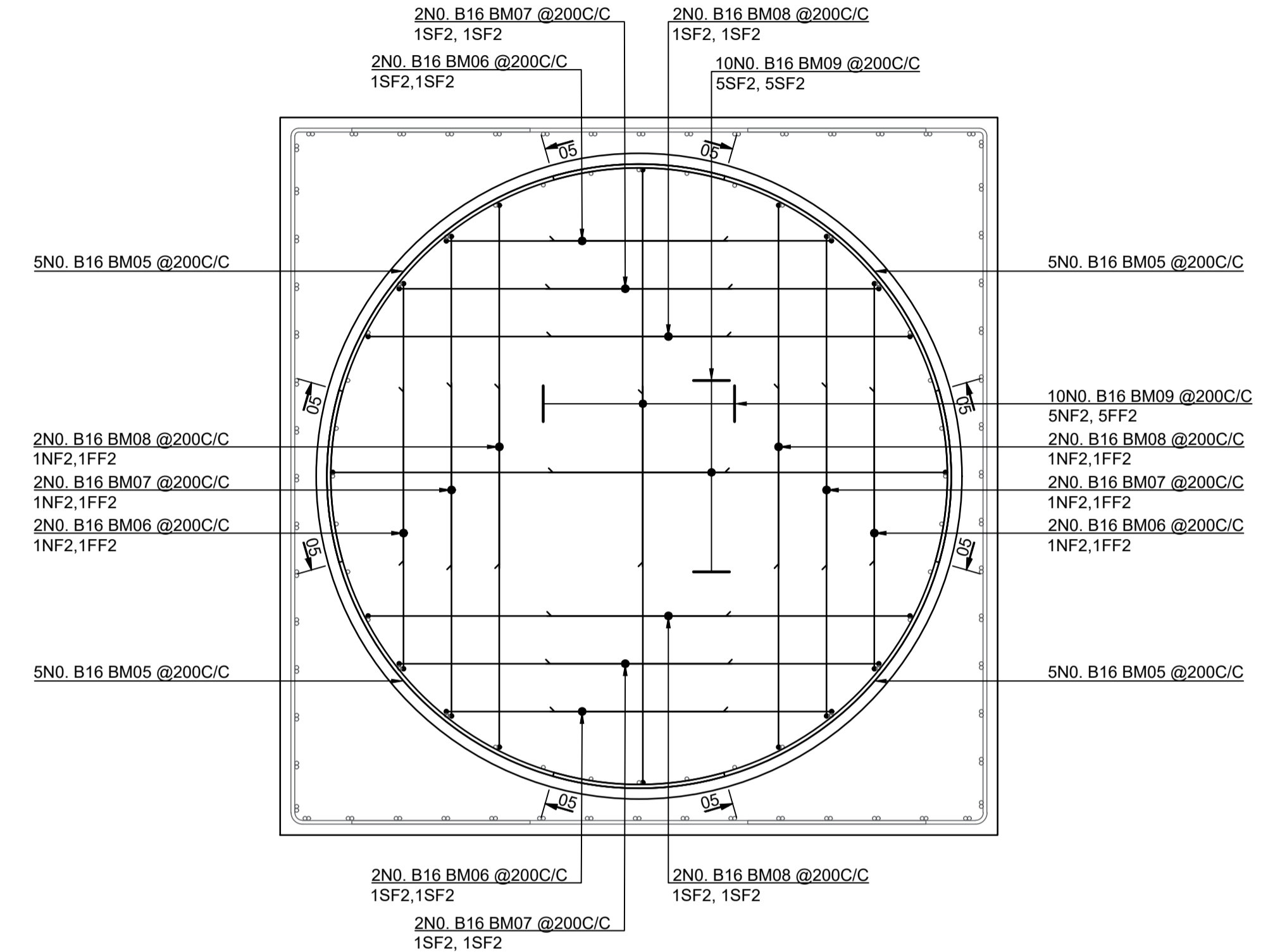
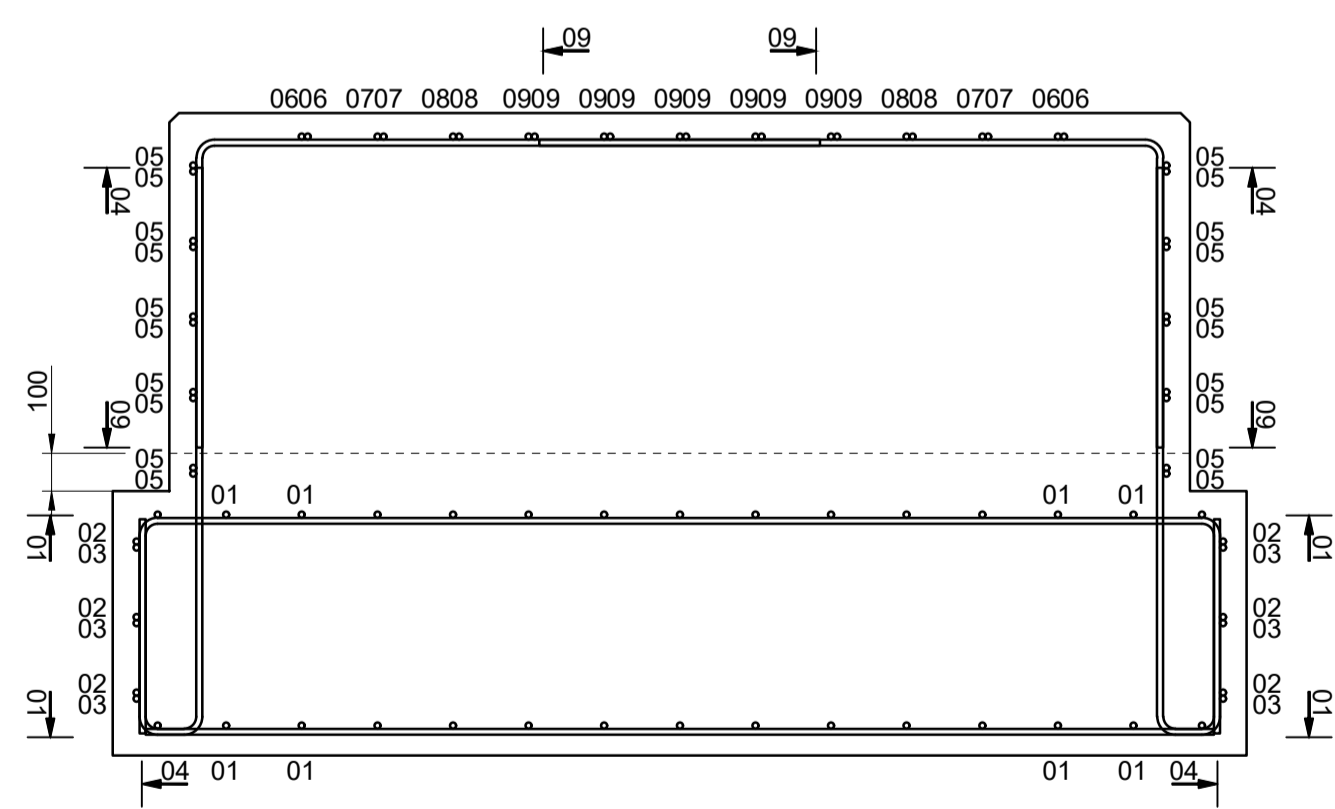


PLAN ON FOUNDATION
SCALE 1:20



PLAN ON PLINTH
SCALE 1:20



SECTION A-A
SCALE 1:20

BAR BENDING SCHEDULE															
Member	Bar mark	Type and size	No. of Mbrs	No. of bars in each	Total No.	Length of each bar † (mm)	Shape Code	A* (mm)	B* (mm)	C* (mm)	D* (mm)	E* (mm)	F* (mm)	R* (mm)	Weight (kg)
Foundation	01	B16	1	60	60	3950	21	570	2855	(570)					6.25
	02	B16	1	6	6	4900	21	1000	2890	(1000)					7.75
	03	B16	1	6	6	2400	00	2400							3.80
	04	B16	1	36	36	1625	11	(150)	1500						2.57
	05	B16	1	20	20	2800	00	2800							4.43
	06	B16	1	8	8	2000	11	825	(1200)						3.16
	07	B16	1	8	8	2200	11	825	(1400)						3.48
	08	B16	1	8	8	2325	11	825	(1525)						3.68
	09	B16	1	20	20	2450	11	825	(1650)						3.90
This schedule conforms to BS 8666:2020						* Specified in multiples of 5mm		† Specified in multiples of 25mm		Total weight on this schedule = 785.98 kg					

- Notes:
- All dimensions are in millimetres unless noted otherwise.
 - Refer to Drawing No. BMBC-GTSCULPT-FDN-DR-0001 for detailed notes.
 - All exposed arises to have 25x25 chamfers unless noted otherwise.
 - For details of reinforcement refer to bar bending schedule on the drawing.
 - Nominal concrete cover (Cnom) to reinforcement shall be 55mm, unless noted otherwise. The maximum/minimum cover to reinforcement shall be +10/-10mm. Bar bending schedules have been prepared based on nominal cover.
 - Reinforcement is detailed and scheduled in accordance with BS 8666:2005.
 - Minimum lap lengths shall be as follows, unless noted otherwise:-
- | Bar dia. | Concrete Grade | |
|----------|----------------|----------|
| | Anchorage | Min. Lap |
| 16 | 475 | 725 |
- Reinforcement called up thus:-
15 - B - 16 - 43 - 150 - (T)
| | | | |
No. Type Bar Bar Spacing Location and/or comment
of of dia. mark
Bars Bars
 - Reinforcement grade shall be grade B500B or B500C ribbed bars in accordance with BS4449:2005. Stainless steel bars shall be to BS6744:2016 and shall be grade 1.4462 to BS EN 10088-5:2009 with a 0.2% proof strength of 500 MPa.
 - All reinforcement shall comply with all relevant British Standard Specifications, and be provided by firms certified under the U.K. Specifications for Reinforcing Steels (CARES) Scheme.
 - Supports and spacers to reinforcement required in addition to any shown on drawings shall be the responsibility of the Contractor.
 - The spacing of the reinforcement bars shall be adjusted locally as required and in particular to avoid holes, pipes, pockets, recesses, holding down bolts, anchorages, inserts and the like.
 - The reinforcement has not been designed to be freestanding and the Contractor is responsible for the stability of reinforcement in the temporary state.
 - Abbreviations:-
ALT - Alternate bars ABS - Alternate bars staggered
ABR - Alternate bars reversed CJ - Construction Joint
B1 - Bottom face lower T1 - Top face upper
B2 - Bottom face upper T2 - Top face lower
NF1 - Near face outer layer FF1 - Far face outer layer
NF2 - Near face inner layer FF2 - Far face inner layer
SF1 - Side face first layer SF2 - Side face second layer

Rev	Rev Date	Purpose of revision	Drawn	Check'd	Appr'd
P0.1	JAN. 2026	FOR ISSUE	CM	GL	AD



Project
GOLDTHORPE SCULPTURE

Drawing title
**SCULPTURE FOUNDATION
PLAN & SECTION
REINFORCEMENT DETAILS & SCHEDULE**

Scale	Revision	Drawing Status	
AS SHOWN	P0.1	FOR ISSUE	
Drawn	Checked	Approved	Date
CM	GL	AD	19/01/2026

Drawing No.
BMBC-GTSCULPT-FDN-DR-0100

Paul Castle, Service Director
Environment & Transport, Place Directorate,
PO Box 609,
Barnsley, S70 9FH
Tel. (01226) 773555 Fax. (01226) 772110