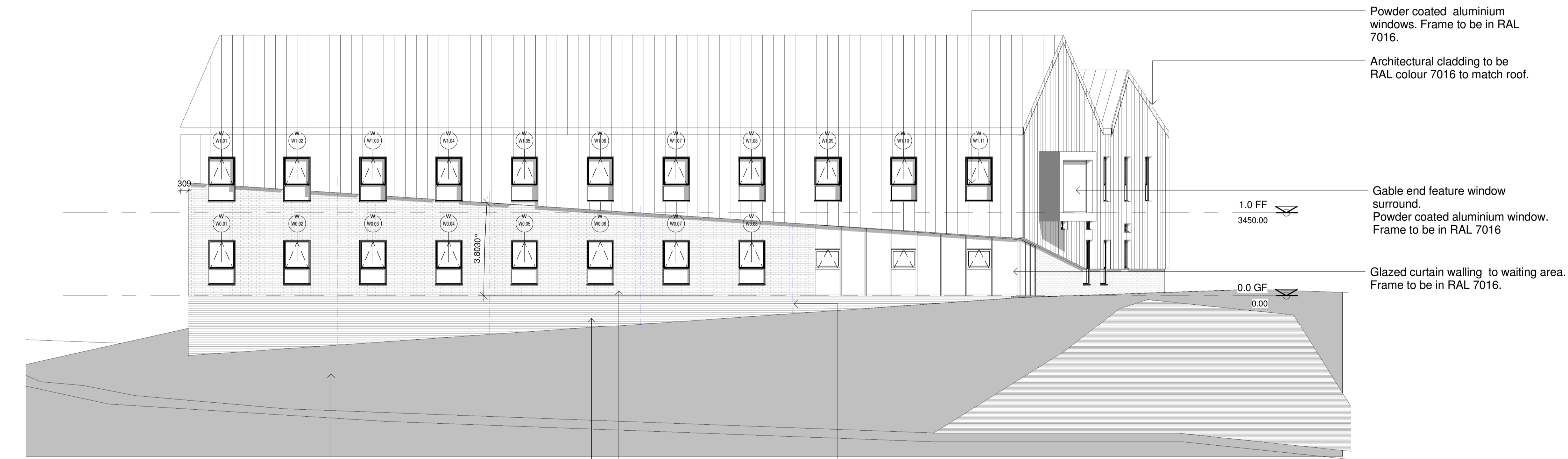


0 1m 2m 5m 10m
Scale 1: 100 @ A1



1 South East Elevation
1 : 100

Masonry roman block lignacite split face colour in snowstorm
Indicative line of black paladin fencing
Powder coated aluminium glazing & doors to main entrance. RAL 7016.



2 North East Elevation
1 : 100

Planting refer to landscaping strategy
Blue dashed lines indicate movement joints
Masonry roman block lignacite split face colour in snowstorm
Masonry roman block plinth in lignacite split face colour in silver grey

REV F: 25.04.2018 : JT : PB : External louvres added
REV E: 23.03.2018 : JT : PB : RAL colours revised following approval from Client
REV D: 01.03.2018 : AB : CO : Ammended movement joints to suit comments
REV C: 27.02.2018 : AB : CO : Dimensions added to cladding overhang.
REV B: 23.02.2018 : AB : CO : U/S of cladding height and angle now noted.
REV A: 31.01.2018 : AB : CO : Ammended drawings to suit comments

Issue Purpose: **CONSTRUCTION**

P+HS Architects
64 Albion Street
Leeds LS1 6AG
0113 245 4332
www.pandhs.co.uk
The Old Station
Station Road
Stokesley TS9 7AB
01642 712684
Design Works
William Street
Gateshead NE10 0JP
0191 4692585

P+HS
architects

Client	Park Grove Surgery	Issued From	Leeds
Project	Park Grove Medical Centre	Date	March 2016
Title	Elevations Sheet 1	Scale	1 : 100 @ A1
Drawn	AMG	Auth	PJS

Drawing Number	Revision
2562 - C - 20 - 001	F

Do not scale from this drawing. Work to figure dimensions, and any discrepancy is to be reported to the architect.
Refer to larger scale drawings where available. © P+HS Architects

Stage Identification: Design - D Construction - C