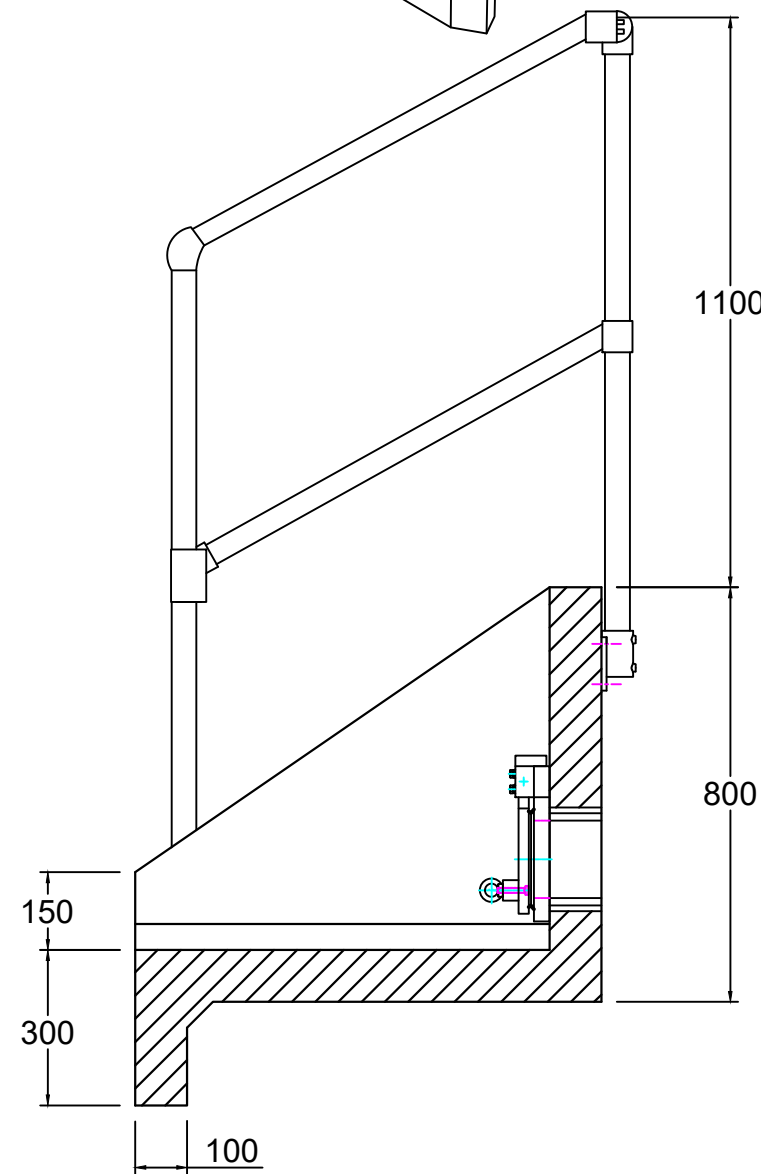
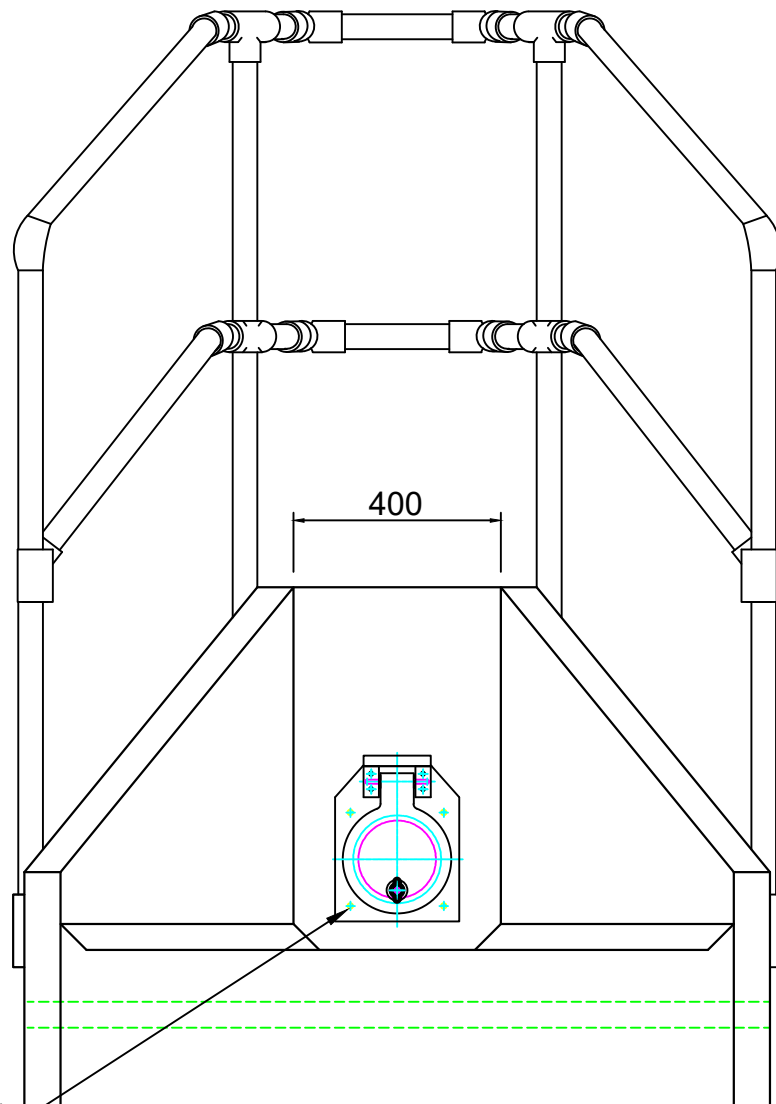
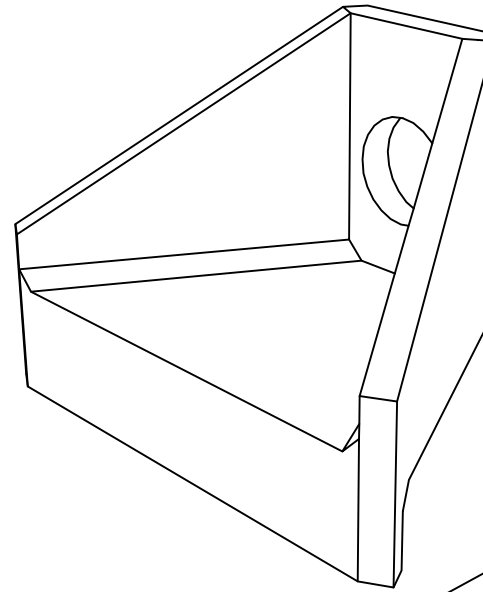


Note: Isometric drawing is for reference only, details may not accurately represent actual design - please see detailed views for technical information



Althon 150 HDPE/SS Flap Valve Specification Information

- The valve plate and the back plate are produced using HDPE/SS
 - The hinge pin and ballast weight are produced in SS316 as standard
 - The ballast weight can be easily adjusted if required
 - The sealing arrangement consists of an EPDM lips seal in the back plate
 - The valve plate is also installed on an angle in relation to the back plate to ensure a good seal
- Material: HDPE, SS316, EPDM
 Opening: ϕ 150mm
 Max load from bottom invert level (B.I.L): 1.3MWC long period (=50 years)
 5MWC short period (=72hours)
 Number of chemical anchors M8: 4 pieces

DO NOT SCALE DRAWING

NOTES:

- All dimensions in mm
- All measurements \pm 1mm

Specification Information

- Opening in back wall cast to suit outside diameter of the pipework
- Invert level of pipe can be set to your specification

Headwall Installation

Units should be bedded on minimum 150mm of semi-dry concrete. Sit the headwall level or with a slight fall 1:50 from pipe to spill mouth.

Handling

- Weight of concrete is based on 2.4 tonne/m³+5% is recommended for sizing lifting equipment.
- All lifting points shall be used as specified below - Anchor points & loops - Total Qty: 3
- Unit to be lifted as per lifting diagram

Concrete

- Mix ref: Self-compacting DC4/DS4 Mix
- Lifting strength based on 2 cubes = 20N/mm²
- Characteristic 28 day cube strength = 50N/mm²
- Concrete provides Design Chemical Class 4 (DC4) to special Digest 1, Table F2.

Reinforcement

- Reinforcement to BS EN 13369
- Scheduling, dimensioning, bending & cutting to BS8666
- Cage to be machine tied with steel wire

Manufacture

- Manufacture to BS EN 15258:2008 precast concrete products - Retaining wall elements, Factory Production Control certificate number: 0086-CPR-650448 & BS EN 13369
- Tolerances to BS EN 13369 clause 4.3.1.1
- Finishing:

Class	Top	Sides	Base	Rear of back wall
	A	A	A	Self - Levelled
All Faces				

- Marking: Units shall be indelibly marked to show:
 - Mould reference code
 - De-mould date
 - Job reference number & unique product number
 - Unit weight (kg)

Design

- Concrete design to EC2
- Althon have designed the concrete units only, the site conditions should be assessed for suitability by the scheme designer
- Units are designed to withstand a vertical live load surcharge of 10kN/m²
- Weight of soil = 18kN/m³
- Angle of internal friction = 30 Deg.
- Design Life: >50 years

Min Cover	Cover Block Size (mm)		Min Cover	Max Cover
	Size (mm)	Size (mm)		
All Faces	33	28	28	38

Exposure Classification	Exposure induced by Carbonation	Corrosion induced by Chloride	Freeze/thaw attack	Chemical attack
	All Faces	XC3/4	XD2	XF3

Fabrication Specification

- Manufacture IAW EN 1090-2 EXC CLASS 1
- Material grade is to be: BS EN 10025 S275
- Welding carried out IAW EN 1090-2 PARA 7.5.4 - 7.5.18
- All fillet and butt welds to have a minimum throat thickness of 6mm & joints to be fully welded where possible.
- Ensure vertical flats are fully welded both sides where possible.
- All sharp edges and burrs are to be removed.
- Remove all weld splatter.
- Holes by punching are permitted with reaming.
- Galvanising is carried out after fabrication to BS EN:ISO 1461

Handrail Specification

- Kee Klamp® Galvanised Size 8 Fittings
- Size 8 48.3mm OD 3.2mm Wall Thickness Galvanised Medium Duty Tube to BS EN 10255
- 360N/m Design Load at stated in BS 8118, BS 6180, BS 6399 & BS 7818, Civil Engineering Specification for the Water Industry (CESWI) 7th Edition Clause 2.60 Handrails & Balusters & The Engineering Equipment and Materials Users' Association (EEMUA) Publication 105 7th Edition Factory Stairways, Ladders and Handrails
- Other design loads available on request
- GRP/FRP Handrails also available

REV NO	DATE	DESCRIPTION



ADDRESS: ALTHON LIMITED
 VULCAN ROAD SOUTH
 NORWICH
 NR6 6AF

TEL: 01603 488700
 FAX: 01603 488508
 EMAIL: sales@althon.co.uk
 WEBSITE: www.althon.co.uk

PROPRIETARY & CONFIDENTIAL

The information contained in this drawing is the sole property of Althon Limited. Any reproduction in part or as a whole without the written permission of Althon Limited is strictly prohibited.

DRAWING TITLE / PROJECT:
**H3C Headwall
 150mm Flap Valve
 3 Sided Kee Klamp**

CLIENT:			
SCALE: NTS	PAPER: A3	SHEET NO: 01 OF 02	DATE: 23 - 04 - 18
HEADWALL WEIGHT: 540kg		TOE WEIGHT: N/A	
PRODUCT NAME: H3C			
DRAWING No:			

