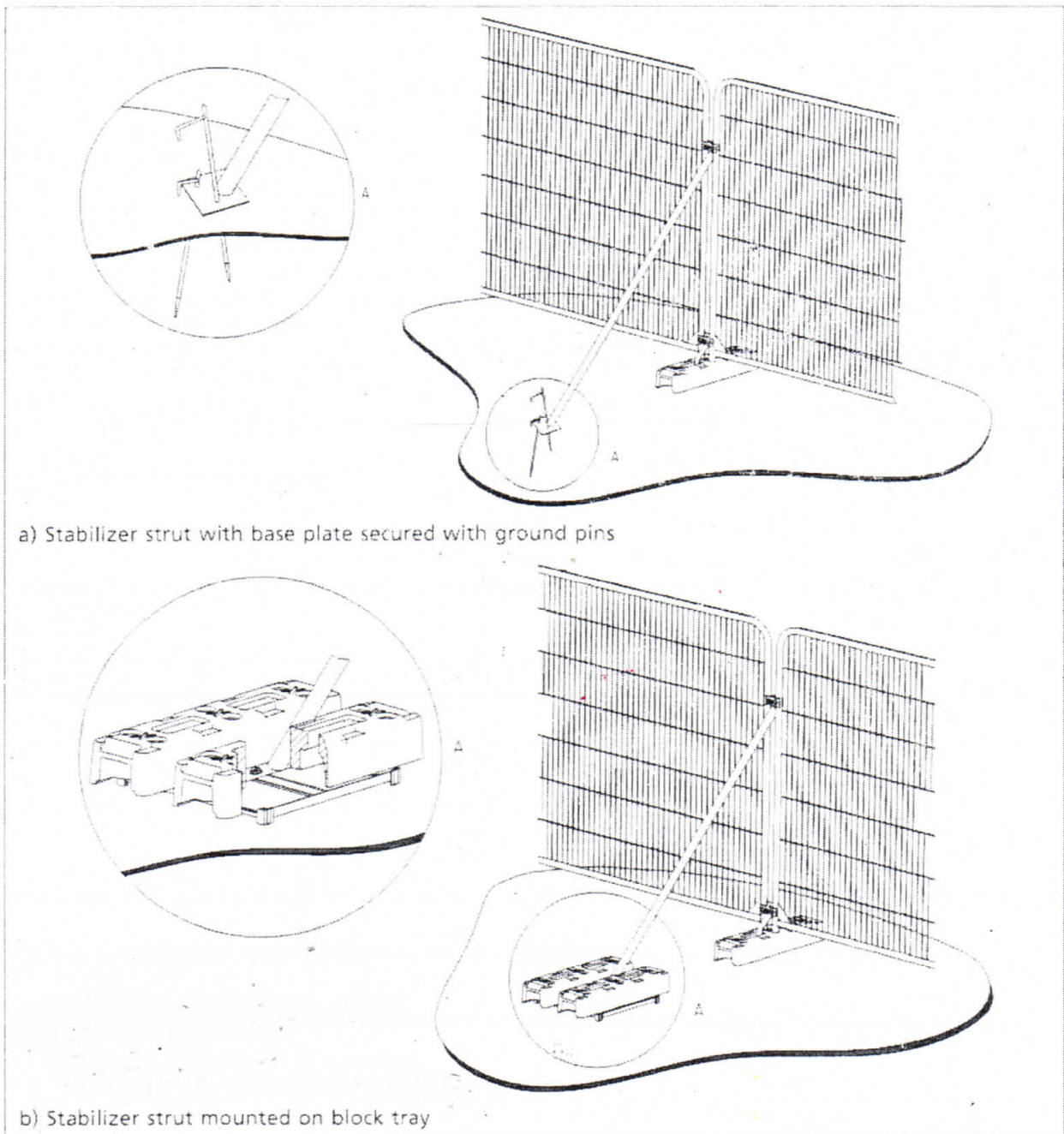


Tree Protection DETAILS



a) Stabilizer strut with base plate secured with ground pins

b) Stabilizer strut mounted on block tray

Secured 'Heras' type fencing with stabilizing system

THIS OPTION BETWEEN 'A' & 'B' ON LAYOUT.

APPENDIX 1

TREE PROTECTION DETAILS



TREE PROTECTION AREA - KEEP OUT !

**(TOWN & COUNTRY PLANNING ACT 1990)
TREES ENCLOSED BY THIS FENCE ARE PROTECTED BY
PLANNING CONDITIONS AND/OR ARE THE SUBJECT OF
A TREE PRESERVATION ORDER**

**ANY INCURSION INTO THE PROTECTED AREA MUST BE
WITH THE WRITTEN PERMISSION OF THE LOCAL
PLANNING AUTHORITY**

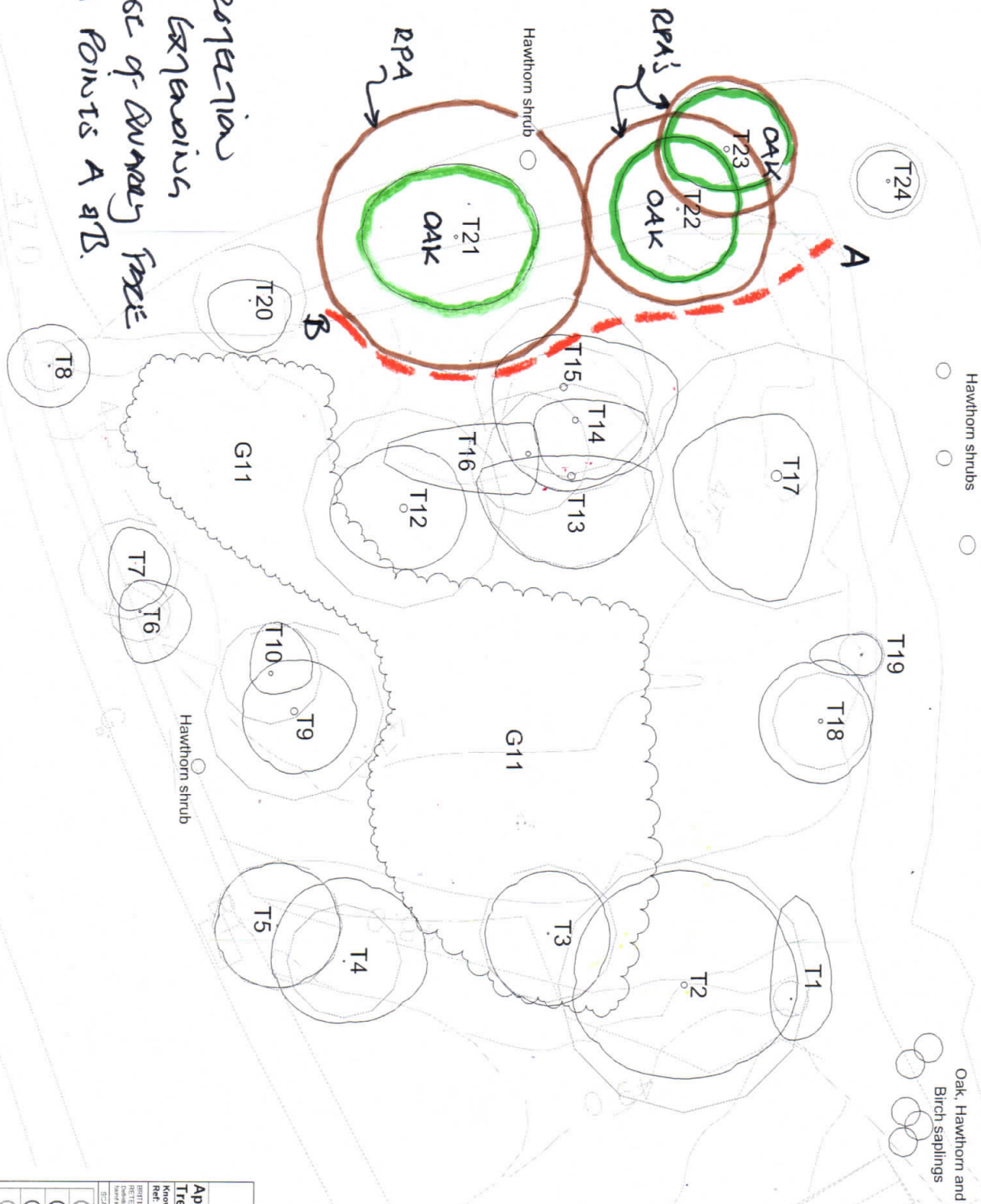
**REPORT TREE OR FENCE DAMAGE TO
SITE MANAGER**

'Example of warning sign for fencing'

APPENDIX 2

TREE PROTECTION DETAILS.

Tree Protection
 Facing Extension
 from Base of Survey Tree
 Between Points A & B.



Appendix 5: Tree Constraints Plan Knowles Quay, Cumbern, S72 8JU. Ref: AWAS025	
DIBURN ENGINEERING LTD 100, The Quadrant, Cumbern, S72 8JU. Tel: 01454 603000	
SCALE: 1:200 DRAWN: AJ	
<input type="checkbox"/>	GARDENING & MAINTENANCE GARDENING & MAINTENANCE
<input type="checkbox"/>	RETENTION / REMOVAL RETENTION / REMOVAL
<input type="checkbox"/>	PROTECTION / REMOVAL PROTECTION / REMOVAL
<input type="checkbox"/>	PROTECTION / REMOVAL PROTECTION / REMOVAL
<input type="checkbox"/>	PROTECTION / REMOVAL PROTECTION / REMOVAL
<input type="checkbox"/>	PROTECTION / REMOVAL PROTECTION / REMOVAL

APPENDIX 3