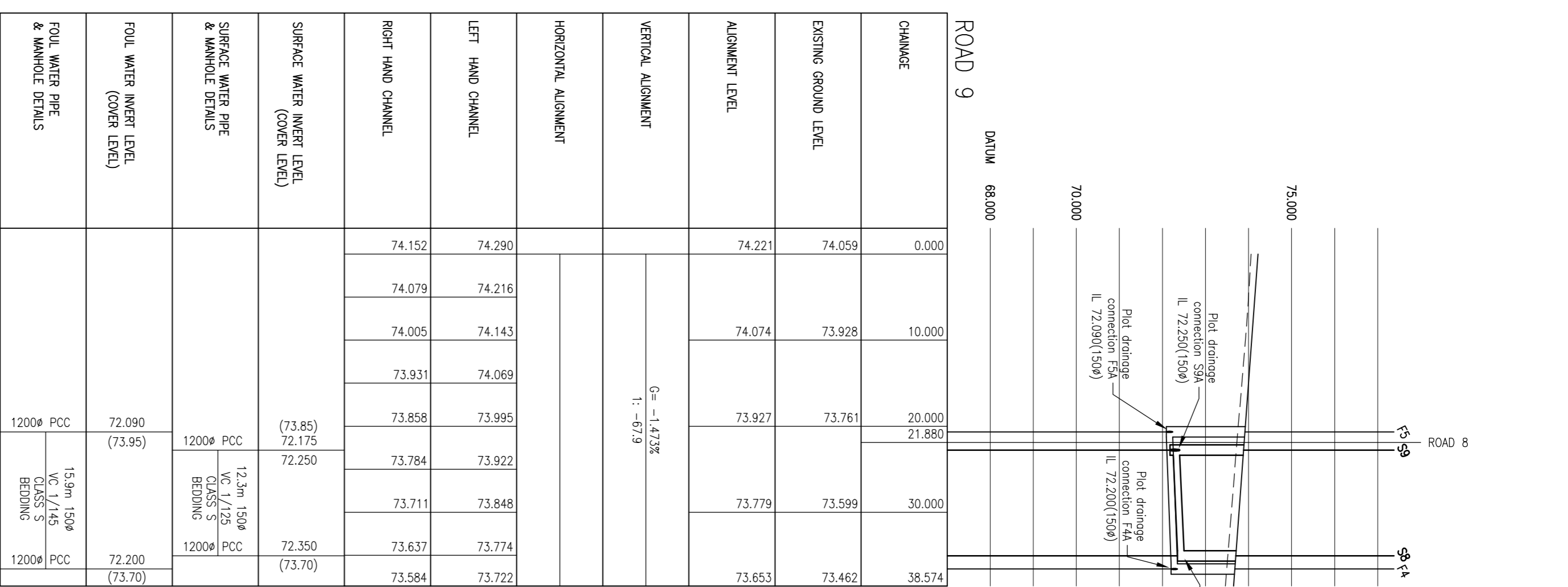
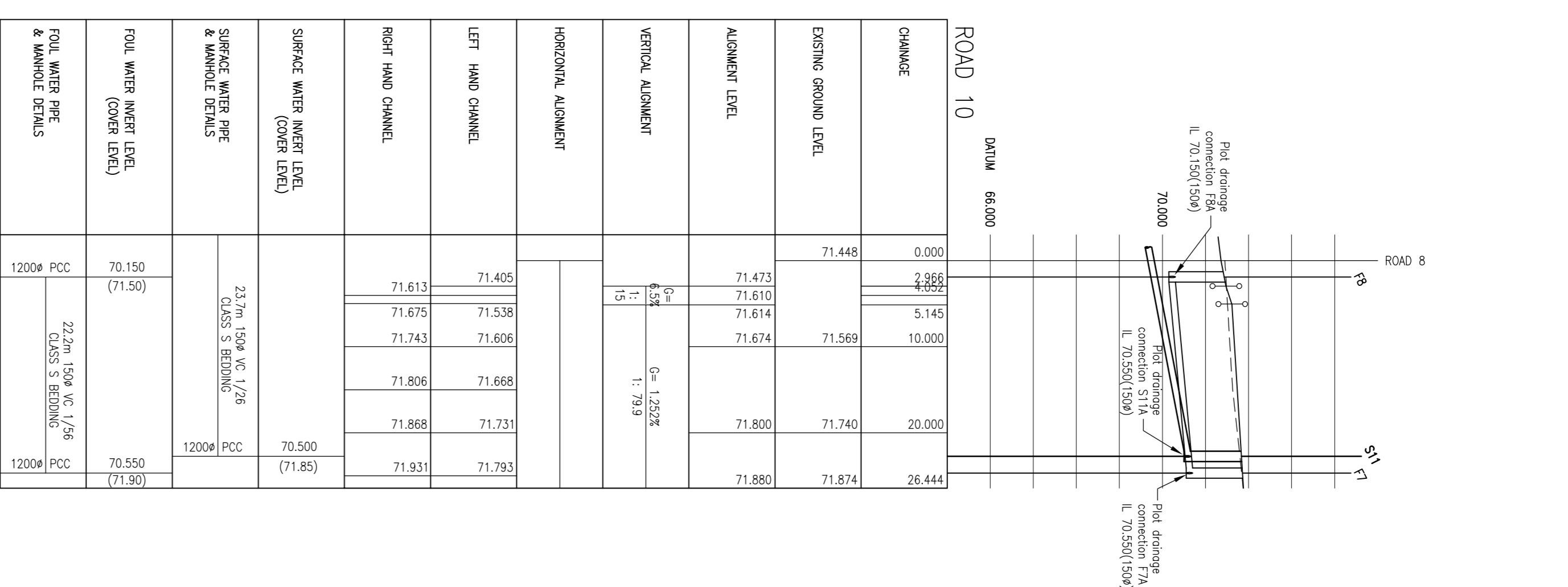


SECTION ALONG ROAD 8  
(SCALE: H=1:500, V=1:100)



SECTION ALONG ROAD 9  
(SCALE: H=1:500, V=1:100)



SECTION ALONG ROAD 10  
(SCALE: H=1:500, V=1:100)

CHANGE	EXISTING GROUND LEVEL	ALIGNMENT LEVEL	VERTICAL ALIGNMENT	HORIZONTAL ALIGNMENT		LEFT HAND CHANNEL	RIGHT HAND CHANNEL	SURFACE WATER INVERT LEVEL (COVER LEVEL)	SURFACE WATER PIPE & WHOLE DETAILS	FOUL WATER PIPE (COVER LEVEL)	FOUL WATER PIPE & WHOLE DETAILS
				R= 37.250	R= 42.750						
0.000	69.215	69.154	G= 3.994% L= 25.0			69.312	69.175	67.000	475mm 300mm VC 1/50 CLASS 5 BEDDING	67.225 (66.15)	1500mm PCC
2.750	69.463	69.443				69.512	69.375				
10.000	69.828	69.843				69.712	69.574				
20.000	70.243	70.843				69.911	69.774				
30.000	70.683	70.843				70.111	69.974				
40.000	71.098	70.641				70.311	70.173				
44.196	71.509	70.573				70.511	70.373				
50.000	71.924	70.772				70.710	70.573				
58.973	72.339	70.972				70.910	70.772				
60.000	72.754	71.172				71.110	70.972				
60.000	73.169	71.371				71.309	71.172				
70.000	73.584	71.571				71.509	71.371				
74.871	73.999	71.771			71.709	71.571					
80.000	74.414	71.971			71.908	71.771					
80.000	74.829	72.170			72.108	71.971					
80.000	75.244	72.370			72.308	72.170					
90.000	75.659	72.570			72.507	72.370					
100.000	76.074	72.769			72.707	72.570					
110.000	76.489	72.969			72.907	72.769					
120.000	76.904	73.169			73.107	72.969					
121.589	77.319	73.368			73.306	73.169					
		73.568			73.506	73.368					
		73.921			73.859	73.568					
		74.275			74.206	73.921					
		74.629			74.560	74.275					
		74.983			74.914	74.629					
		75.337			75.268	74.983					
		75.691			75.622	75.337					
		76.045			76.016	75.691					
		76.399			76.370	76.045					
		76.753			76.724	76.399					
		77.107			77.078	76.753					
		77.461			77.432	77.107					
		77.815			77.786	77.461					
		78.169			78.140	77.815					
		78.523			78.494	78.169					
		78.877			78.848	78.523					
		79.231			79.202	78.877					
		79.585			79.556	79.231					
		80.000			80.000	79.585					

CHANGE	EXISTING GROUND LEVEL	ALIGNMENT LEVEL	VERTICAL ALIGNMENT	HORIZONTAL ALIGNMENT		LEFT HAND CHANNEL	RIGHT HAND CHANNEL	SURFACE WATER INVERT LEVEL (COVER LEVEL)	SURFACE WATER PIPE & WHOLE DETAILS	FOUL WATER PIPE (COVER LEVEL)	FOUL WATER PIPE & WHOLE DETAILS	
				R= 37.250	R= 42.750							
0.000	74.059	74.221	G= -1.473% L= 67.9			74.290	74.152	72.090	123mm 150mm VC 1/45 CLASS 5 BEDDING	72.090 (73.95)	1200mm PCC	
10.000	73.928	74.074				74.216	74.079					
20.000	73.761	73.927				74.069	74.005					
21.880	73.594	73.779				73.995	73.931					
30.000	73.599	73.779				73.922	73.858					
38.574	73.462	73.653				73.848	73.784					
						73.774	73.711					
						73.722	73.637					
						73.670	73.584					
						73.618	73.532					
						73.566	73.476					
						73.514	73.424					
					73.462	73.370						
					73.410	73.318						
					73.358	73.266						
					73.306	73.214						
					73.254	73.162						
					73.202	73.110						
					73.150	73.058						
					73.098	73.006						
					73.046	72.954						
					72.994	72.902						
					72.942	72.850						
					72.890	72.798						
					72.838	72.746						
					72.786	72.694						
					72.734	72.642						
					72.682	72.590						
					72.630	72.538						
					72.578	72.486						
					72.526	72.434						
					72.474	72.382						
					72.422	72.330						
					72.370	72.278						
					72.318	72.226						
					72.266	72.174						
					72.214	72.122						
					72.162	72.070						
					72.110	72.018						
					72.058	71.966						
					72.006	71.914						
					71.954	71.862						
					71.902	71.810						
					71.850	71.758						
					71.798	71.706						
					71.746	71.654						
					71.694	71.602						
					71.642	71.550						
					71.590	71.498						
					71.538	71.446						
					71.486	71.394						
					71.434	71.342						
					71.382	71.290						
					71.330	71.238						
					71.278	71.186						
					71.226	71.134						
					71.174	71.082						
					71.122	71.030						
					71.070	70.978						
					71.018	70.926						
					70.966	70.874						
					70.914	70.822						
					70.862	70.770						
					70.810	70.718						
					70.758	70.666						
					70.706	70.614						
					70.654	70.562						
					70.602	70.510						
					70.550	70.458						
					70.498	70.406						
					70.446	70.354						
					70.394	70.302						
					70.342	70.250						
					70.290	70.198						
					70.238	70.146						
					70.186	70.094						
					70.134	70.042						
					70.082	69.990						
					70.030	69.938						
					69.978	69.886						
					69.926	69.834						
					69.874	69.782						
					69.822	69.730						
					69.770	69.678						
					69.718	69.626						
					69.666	69.574						
					69.614	69.522						
					69.562	69.470						
					69.510	69.418						