

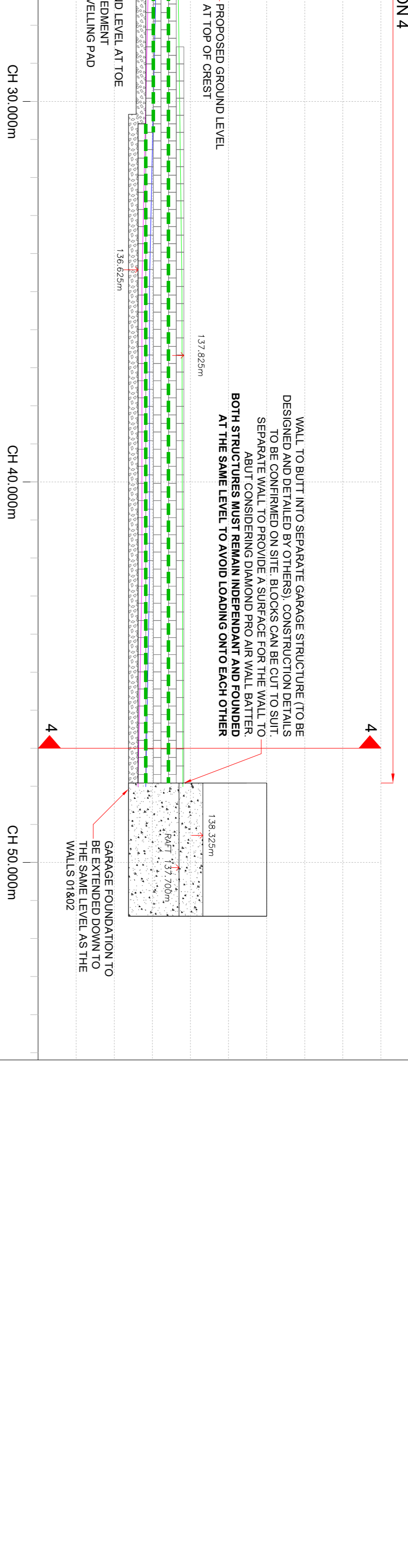
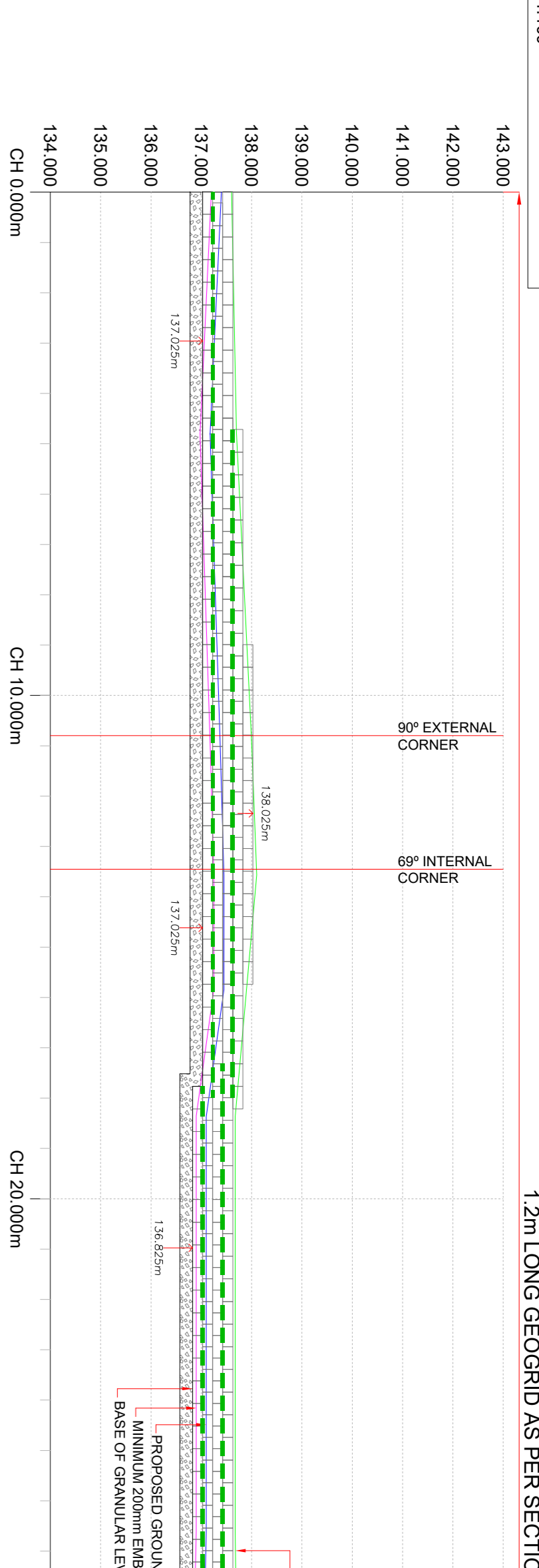
NOTES:
1) All dimensions are in millimetres unless otherwise specified.
2) All blocks are to be installed in accordance with the manufacturer's instructions.

ELEVATION OF WALL 01
1:100

12m LONG GEOGRID AS PER SECTION 4

143 000
142 000
141 000
140 000
139 000
138 000
137 000
136 000
135 000
134 000
CH 0 000mm
CH 10 000mm
CH 20 000mm
CH 30 000mm
CH 40 000mm
CH 50 000mm

3) All blocks are to be installed in accordance with the manufacturer's instructions.
4) Minimum Proposed 1000mm (or greater approved) Grids to be installed at maximum 300mm centres with the bottom proposed layer to be placed on top of the base of the block. Intermediate wall heights to be as per the design.
5) PARASITIC
The block for the wall shall comprise a selected compacted granular fill material to comply with BS 5911. The Contractor is responsible for the selection of the material to remain in the design.
6) DRAINAGE
The proposed drainage system shall be installed in accordance with the design. The drainage system shall be installed in accordance with the design. The drainage system shall be installed in accordance with the design.
7) FOUNDATION FOR THE WALLS
To achieve a suitable foundation for the wall, excavation must take place down to the level of the natural ground level. The Contractor is responsible for the selection of the material to remain in the design.
8) BEARING CAPACITY
The proposed bearing capacity shall be in accordance with the design. The Contractor is responsible for the selection of the material to remain in the design.
9) STABILISATION APPROVAL
The Contractor is responsible for the selection of the material to remain in the design. The Contractor is responsible for the selection of the material to remain in the design.

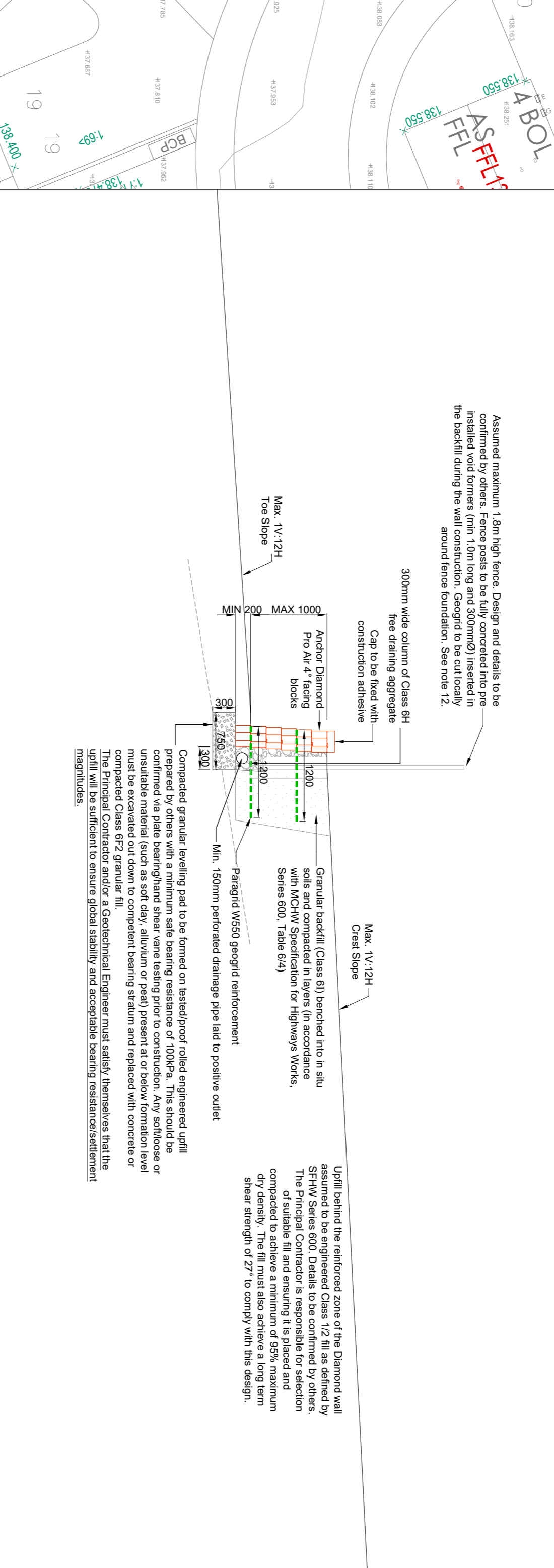
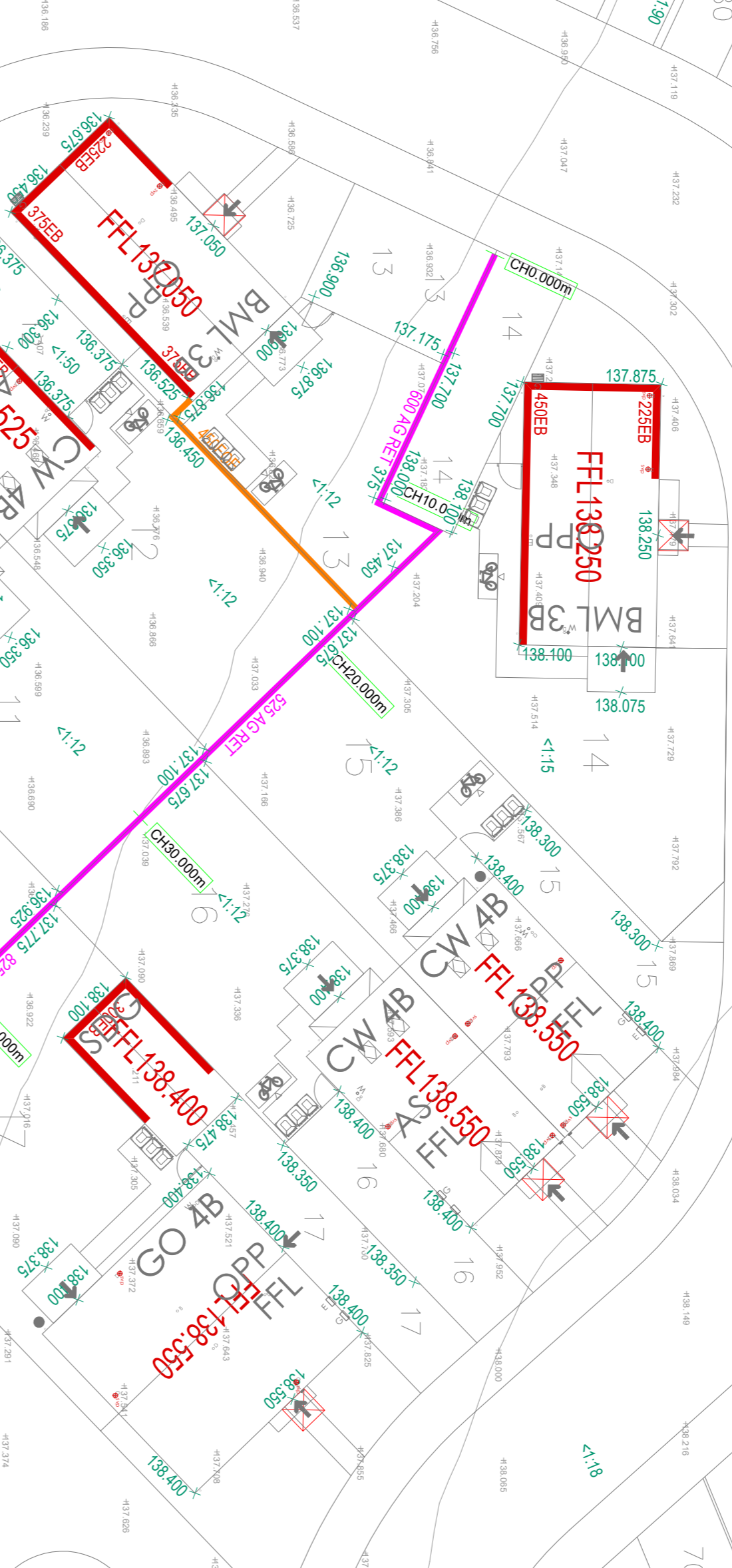


10) TEMPORARY EXCAVATION
Excavation can be safely and without warning. Temporary stability or design of any temporary works is the responsibility of the Contractor.
11) HEAVY CONSTRUCTION TRAFFIC OPERATING CLOSE TO THE WALLS
The Contractor is responsible for the selection of the material to remain in the design. The Contractor is responsible for the selection of the material to remain in the design.
12) STABILISATION APPROVAL
The Contractor is responsible for the selection of the material to remain in the design. The Contractor is responsible for the selection of the material to remain in the design.

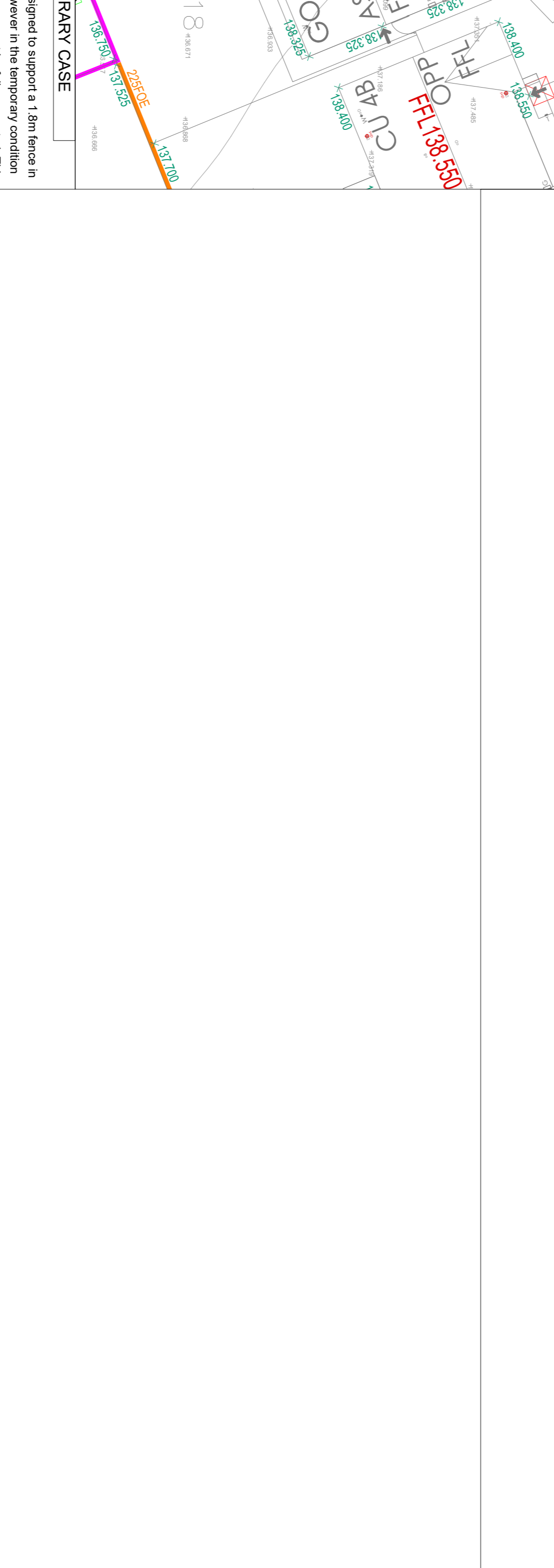
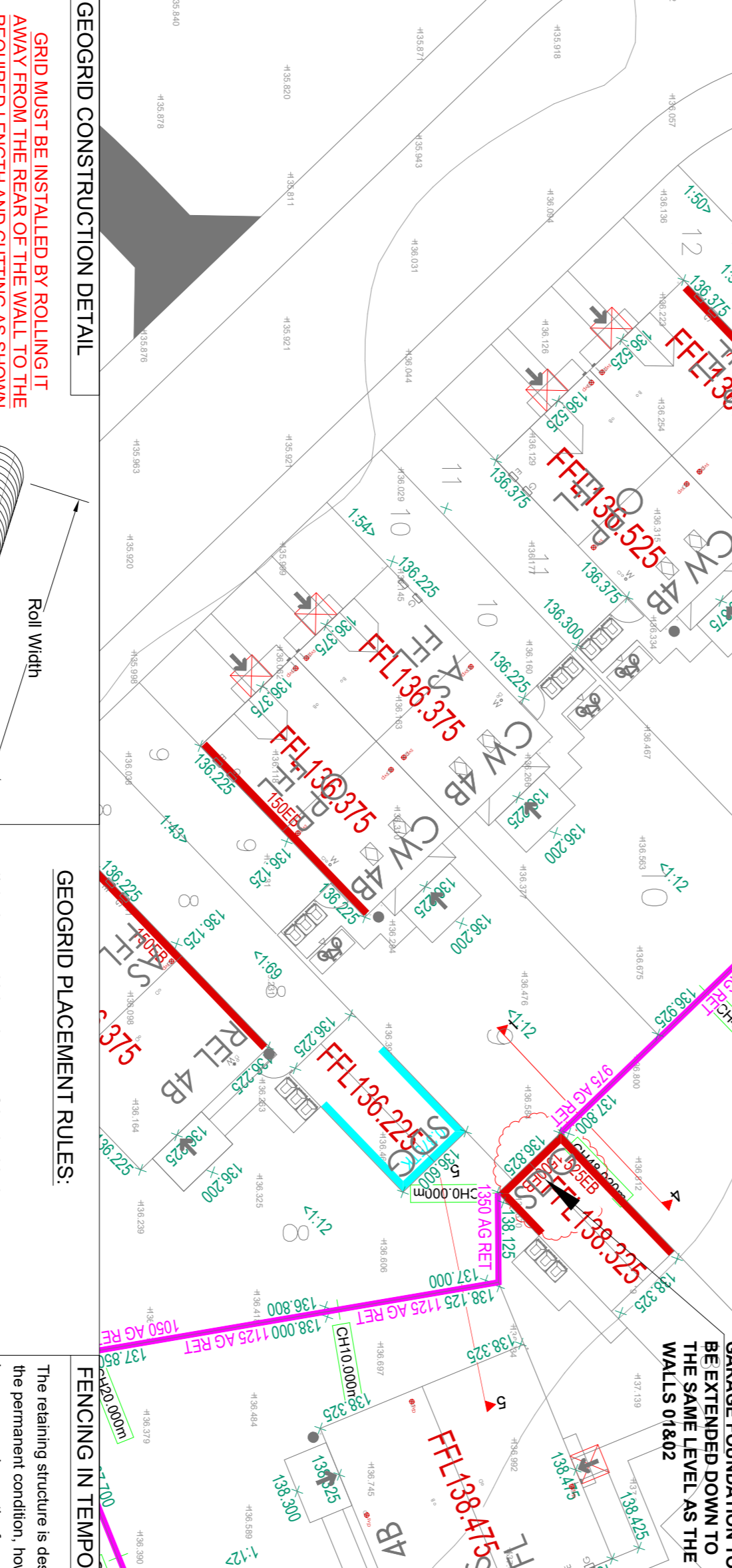
INDICATIVE LOCATION OF DIAMOND PRO AIR WALL 01
1:200
All wall geometry, setting out and required offsets to be confirmed by the Principal Contractor Client's Consulting Engineer prior to construction. The Principal Contractor Client's Consulting Engineer must also confirm the locations of all services prior to construction and ensure that none will be affected by the Diamond Pro Air Walls and their installation.



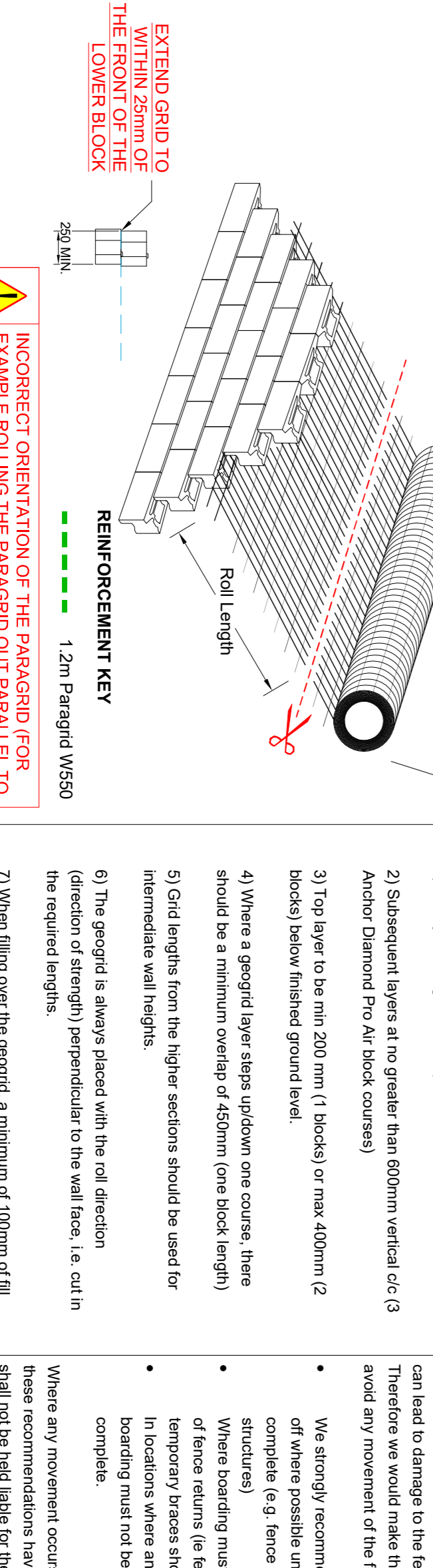
13) RESISTANCE TO VEHICLE IMPACT
Assumed a maximum 15m high lorry (to be designed by others). These points must be fully supported by the geogrid. The Contractor is responsible for the selection of the material to remain in the design.
14) STABILISATION APPROVAL
The Contractor is responsible for the selection of the material to remain in the design. The Contractor is responsible for the selection of the material to remain in the design.



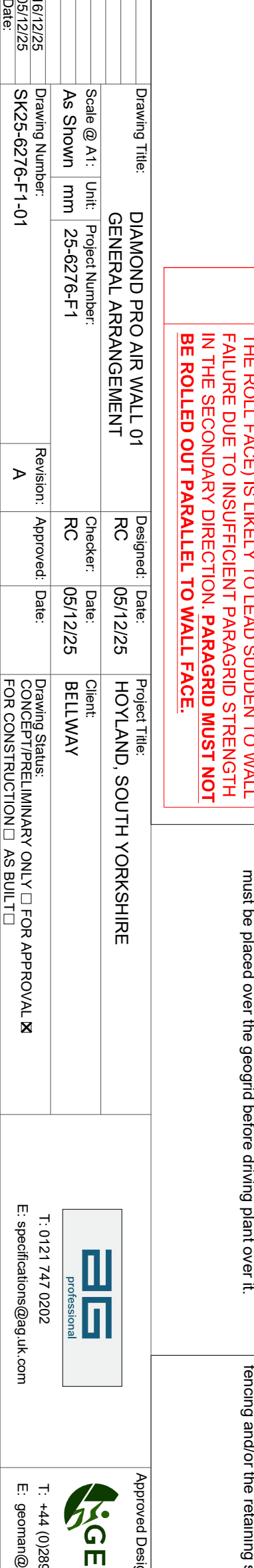
15) SUBGRADE
The subgrade shall be in accordance with the design. The Contractor is responsible for the selection of the material to remain in the design. The Contractor is responsible for the selection of the material to remain in the design.
16) SETTING OUT
The Contractor is responsible for the selection of the material to remain in the design. The Contractor is responsible for the selection of the material to remain in the design.



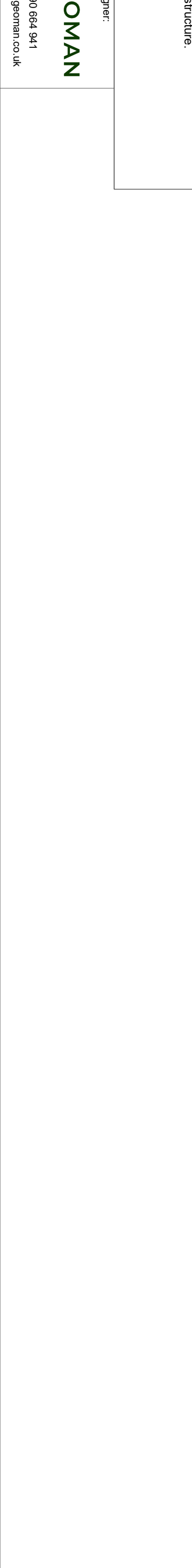
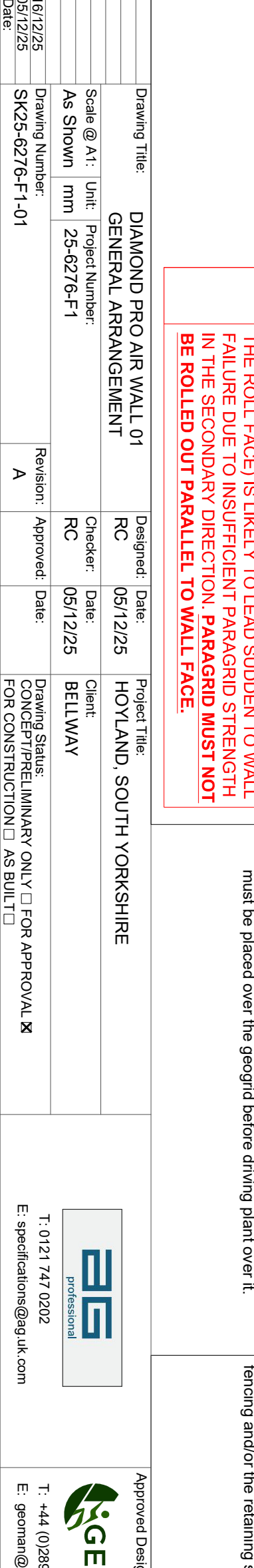
17) WALLING AND OVERLAYS
The Contractor is responsible for the selection of the material to remain in the design. The Contractor is responsible for the selection of the material to remain in the design.
18) NOTES ON CALCULATIONS/BROWNS
The Contractor is responsible for the selection of the material to remain in the design. The Contractor is responsible for the selection of the material to remain in the design.



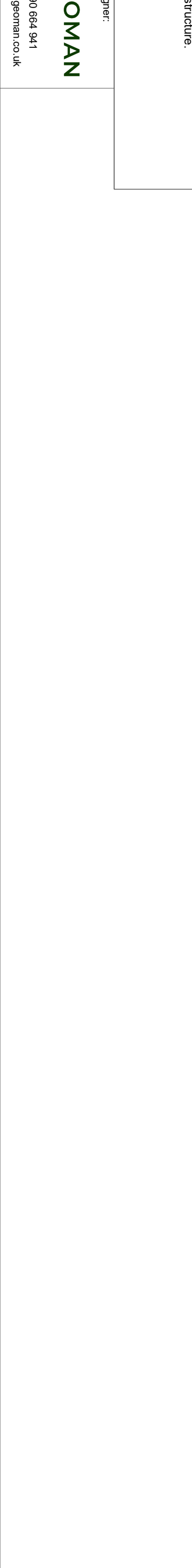
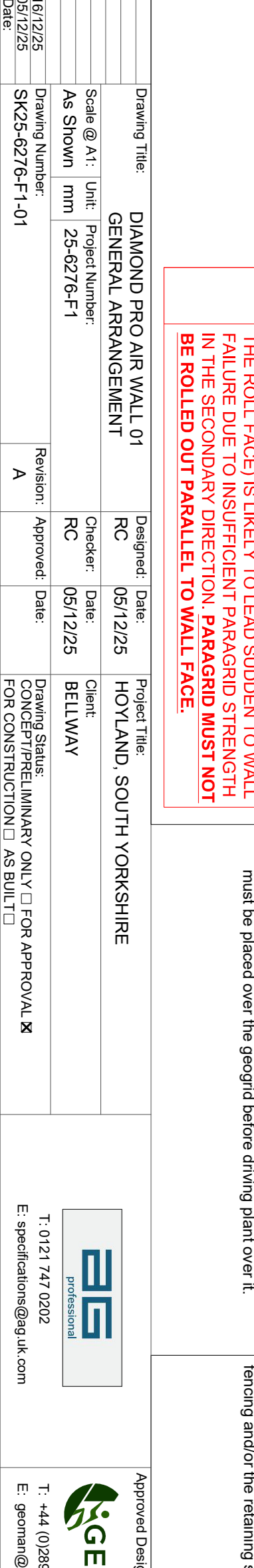
19) NOTES ON CALCULATIONS/BROWNS
The Contractor is responsible for the selection of the material to remain in the design. The Contractor is responsible for the selection of the material to remain in the design.



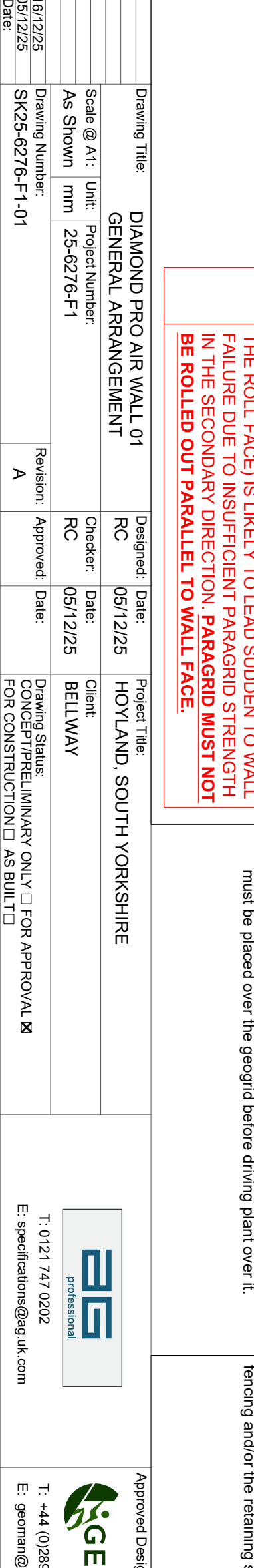
20) TEMPORARY EXCAVATION
Excavation can be safely and without warning. Temporary stability or design of any temporary works is the responsibility of the Contractor.
21) HEAVY CONSTRUCTION TRAFFIC OPERATING CLOSE TO THE WALLS
The Contractor is responsible for the selection of the material to remain in the design. The Contractor is responsible for the selection of the material to remain in the design.
22) STABILISATION APPROVAL
The Contractor is responsible for the selection of the material to remain in the design. The Contractor is responsible for the selection of the material to remain in the design.



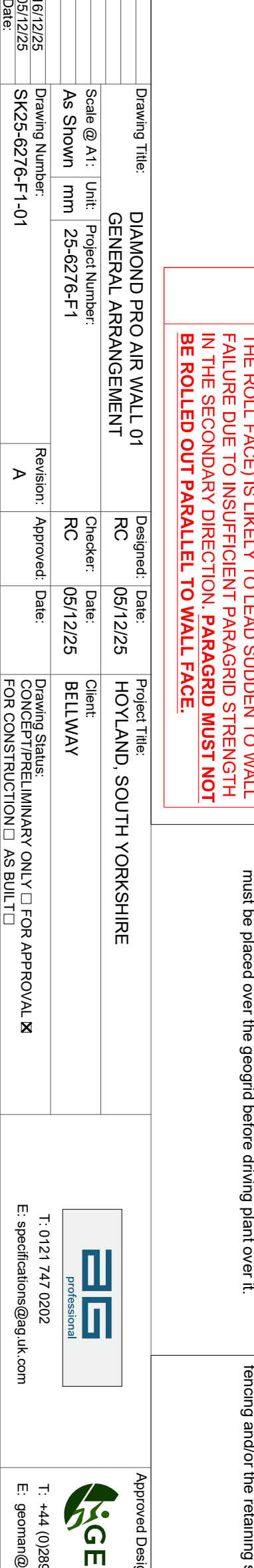
23) RESISTANCE TO VEHICLE IMPACT
Assumed a maximum 15m high lorry (to be designed by others). These points must be fully supported by the geogrid. The Contractor is responsible for the selection of the material to remain in the design.
24) STABILISATION APPROVAL
The Contractor is responsible for the selection of the material to remain in the design. The Contractor is responsible for the selection of the material to remain in the design.



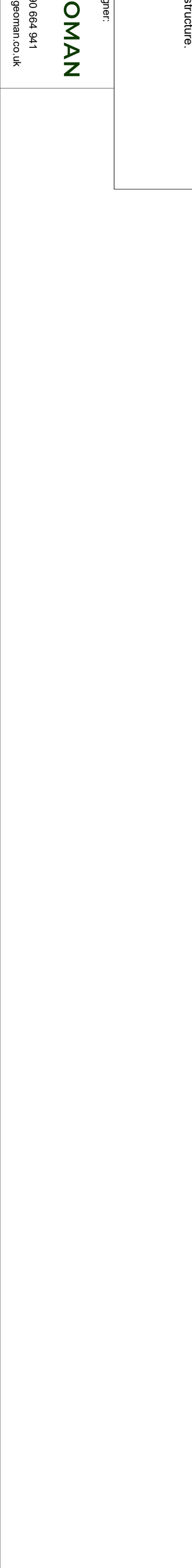
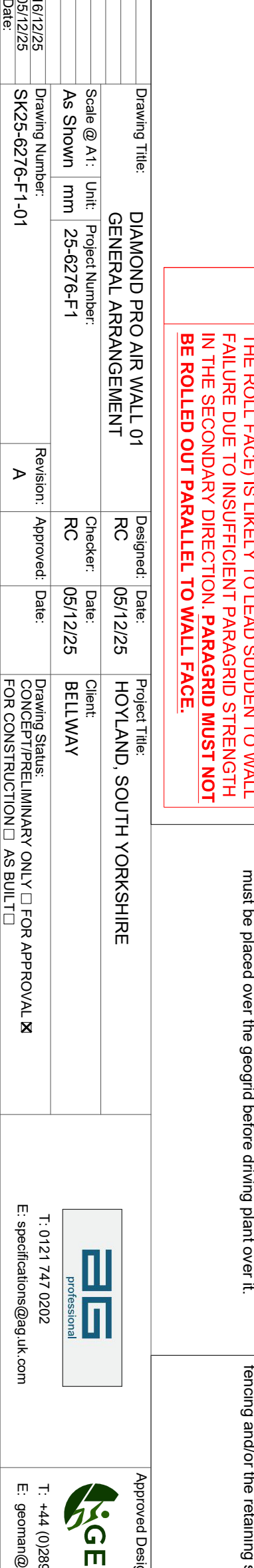
25) SUBGRADE
The subgrade shall be in accordance with the design. The Contractor is responsible for the selection of the material to remain in the design. The Contractor is responsible for the selection of the material to remain in the design.
26) SETTING OUT
The Contractor is responsible for the selection of the material to remain in the design. The Contractor is responsible for the selection of the material to remain in the design.



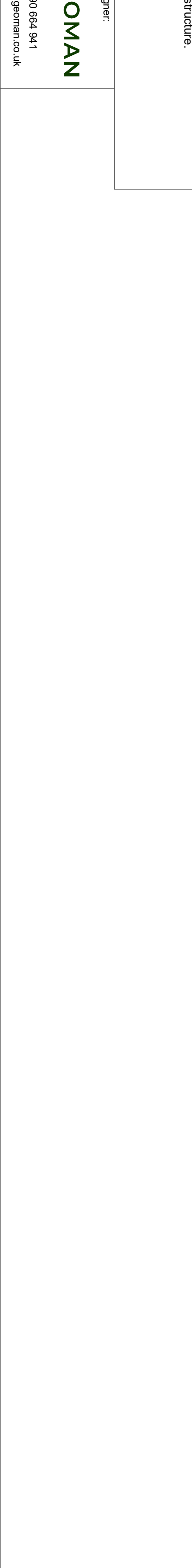
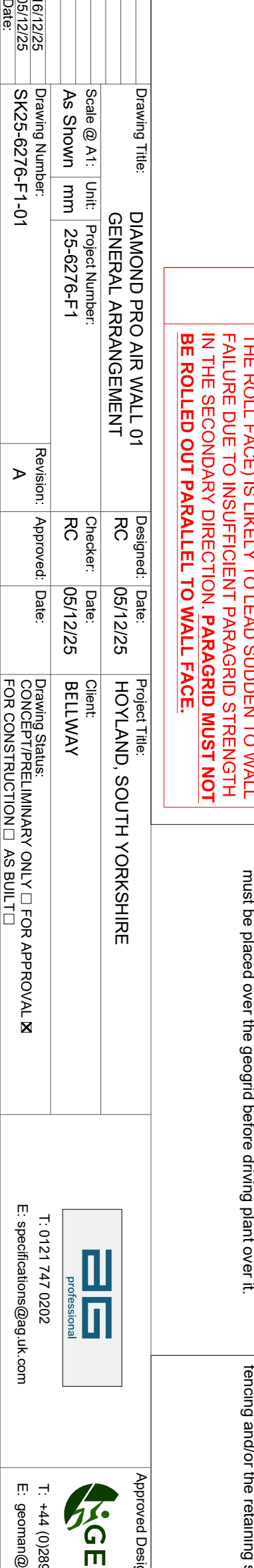
27) WALLING AND OVERLAYS
The Contractor is responsible for the selection of the material to remain in the design. The Contractor is responsible for the selection of the material to remain in the design.
28) NOTES ON CALCULATIONS/BROWNS
The Contractor is responsible for the selection of the material to remain in the design. The Contractor is responsible for the selection of the material to remain in the design.



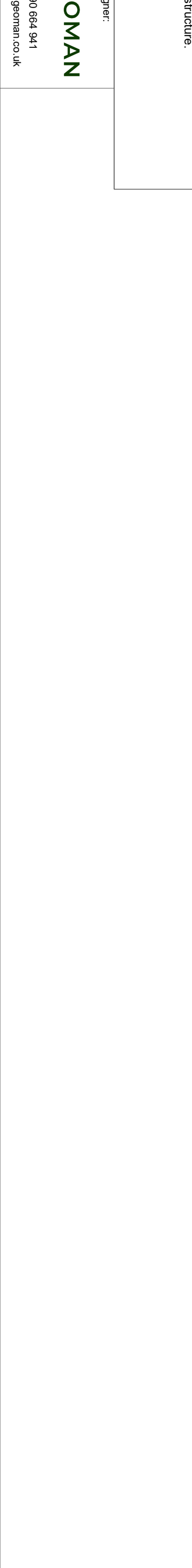
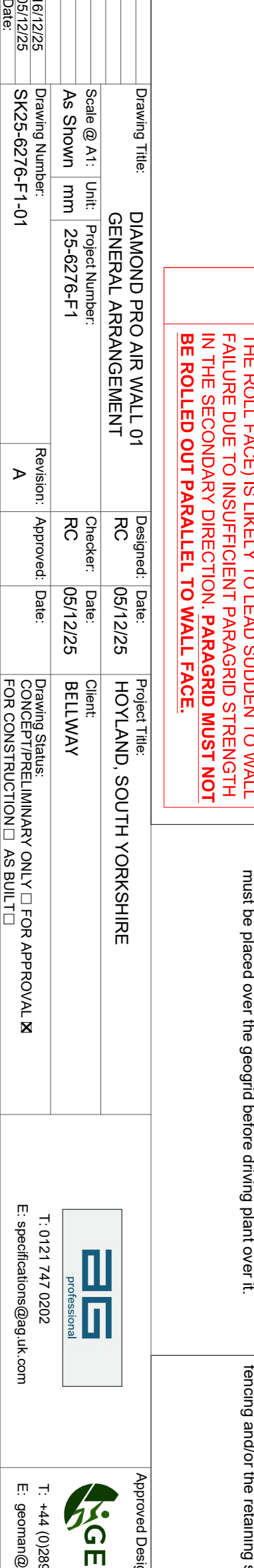
29) NOTES ON CALCULATIONS/BROWNS
The Contractor is responsible for the selection of the material to remain in the design. The Contractor is responsible for the selection of the material to remain in the design.



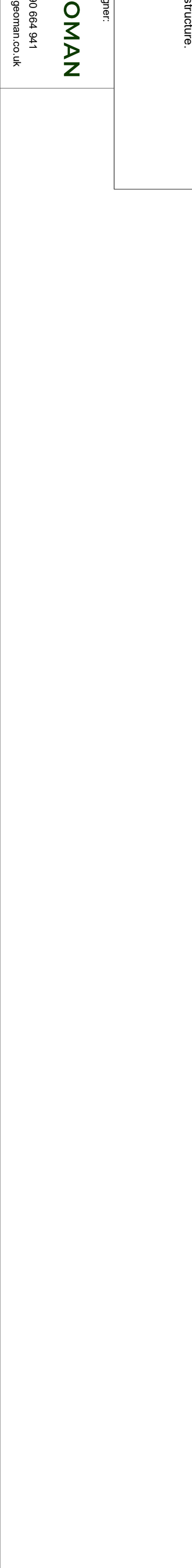
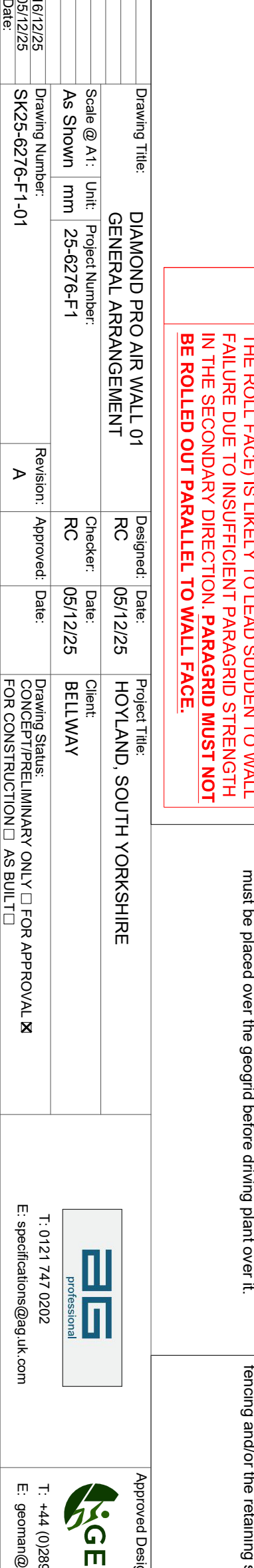
30) TEMPORARY EXCAVATION
Excavation can be safely and without warning. Temporary stability or design of any temporary works is the responsibility of the Contractor.
31) HEAVY CONSTRUCTION TRAFFIC OPERATING CLOSE TO THE WALLS
The Contractor is responsible for the selection of the material to remain in the design. The Contractor is responsible for the selection of the material to remain in the design.
32) STABILISATION APPROVAL
The Contractor is responsible for the selection of the material to remain in the design. The Contractor is responsible for the selection of the material to remain in the design.



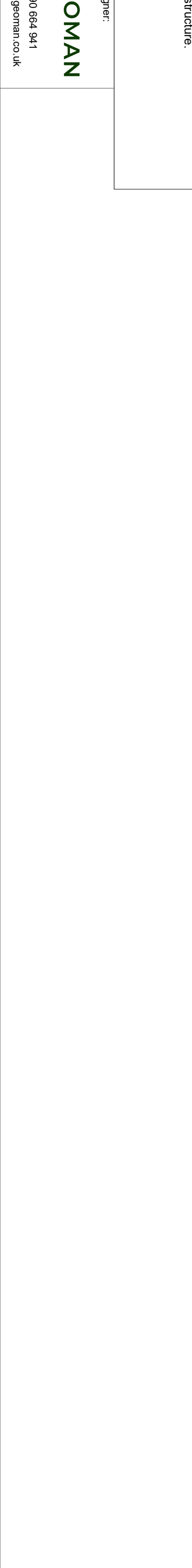
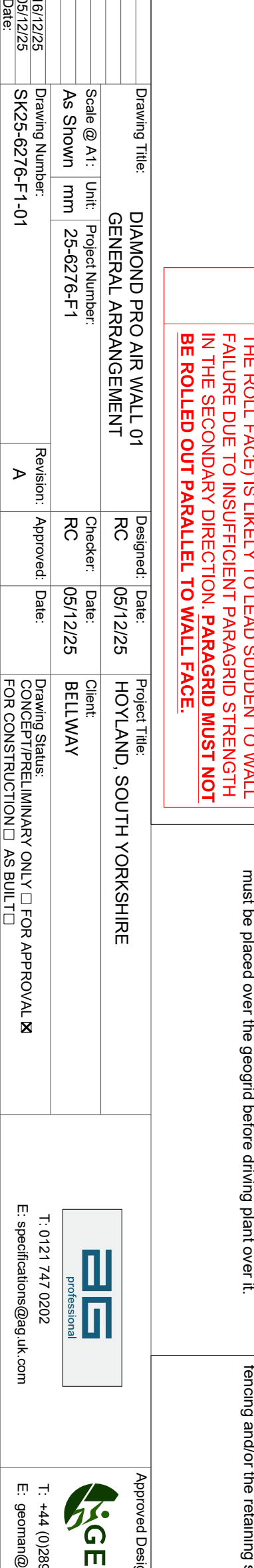
33) RESISTANCE TO VEHICLE IMPACT
Assumed a maximum 15m high lorry (to be designed by others). These points must be fully supported by the geogrid. The Contractor is responsible for the selection of the material to remain in the design.
34) STABILISATION APPROVAL
The Contractor is responsible for the selection of the material to remain in the design. The Contractor is responsible for the selection of the material to remain in the design.



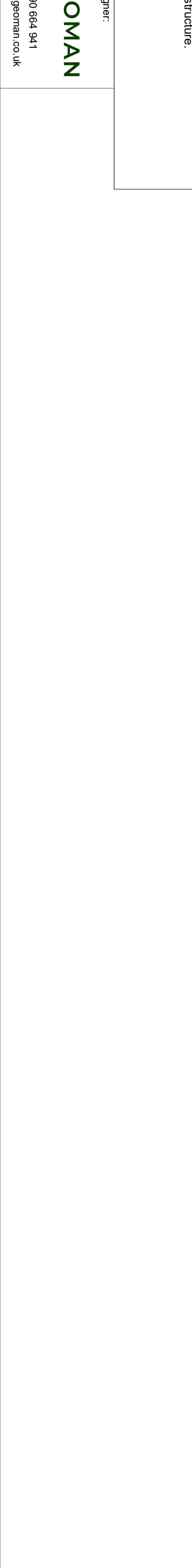
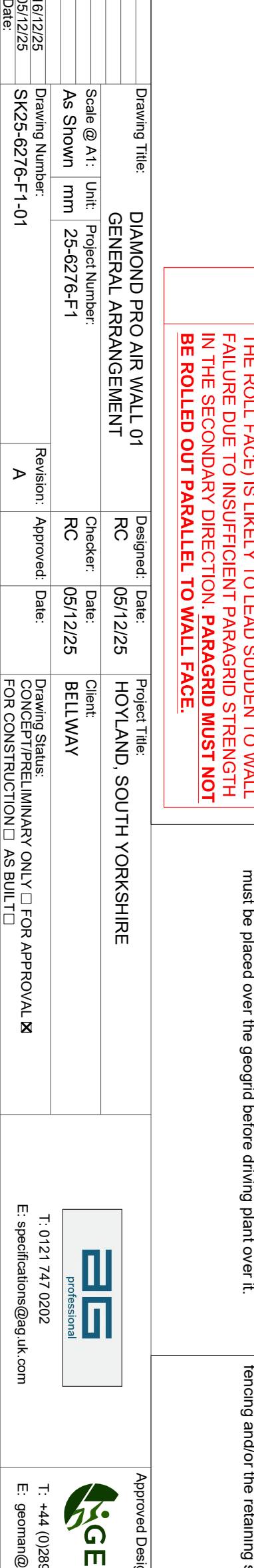
35) SUBGRADE
The subgrade shall be in accordance with the design. The Contractor is responsible for the selection of the material to remain in the design. The Contractor is responsible for the selection of the material to remain in the design.
36) SETTING OUT
The Contractor is responsible for the selection of the material to remain in the design. The Contractor is responsible for the selection of the material to remain in the design.



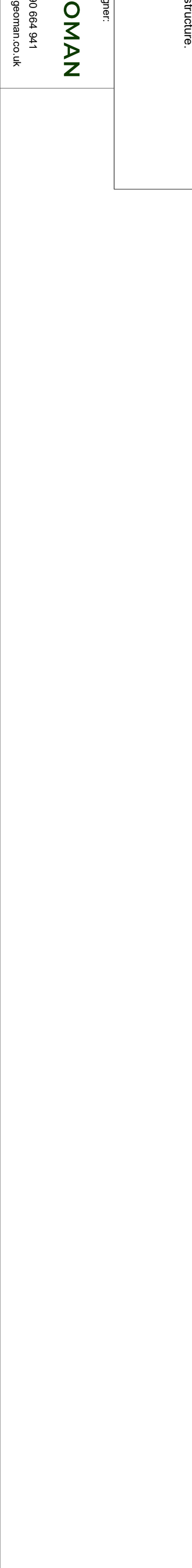
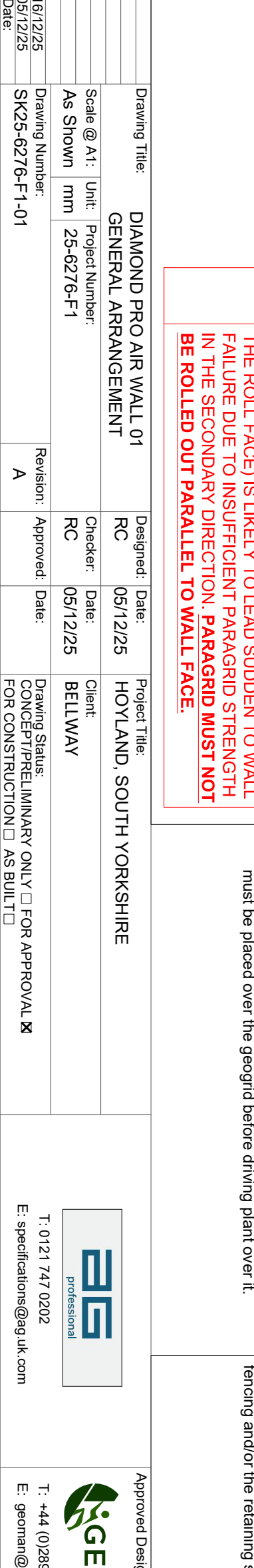
37) WALLING AND OVERLAYS
The Contractor is responsible for the selection of the material to remain in the design. The Contractor is responsible for the selection of the material to remain in the design.
38) NOTES ON CALCULATIONS/BROWNS
The Contractor is responsible for the selection of the material to remain in the design. The Contractor is responsible for the selection of the material to remain in the design.



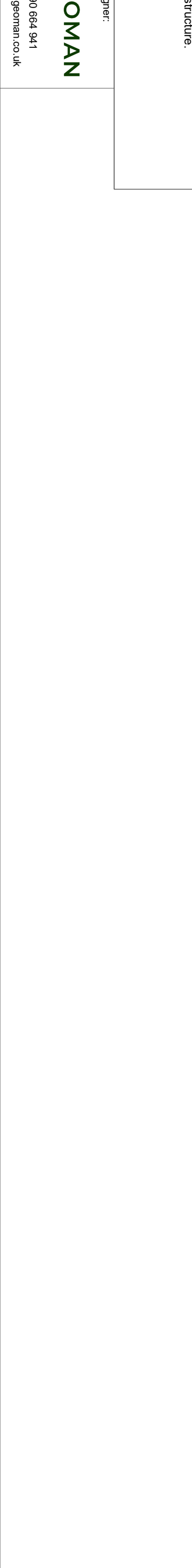
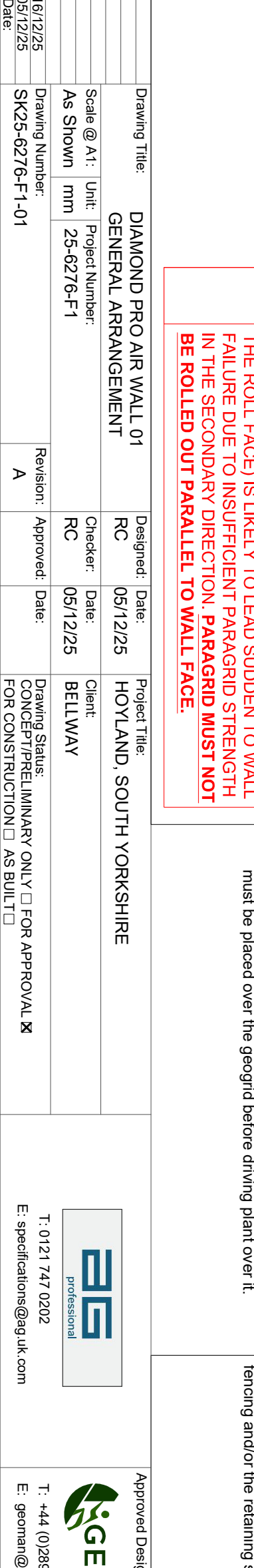
39) NOTES ON CALCULATIONS/BROWNS
The Contractor is responsible for the selection of the material to remain in the design. The Contractor is responsible for the selection of the material to remain in the design.



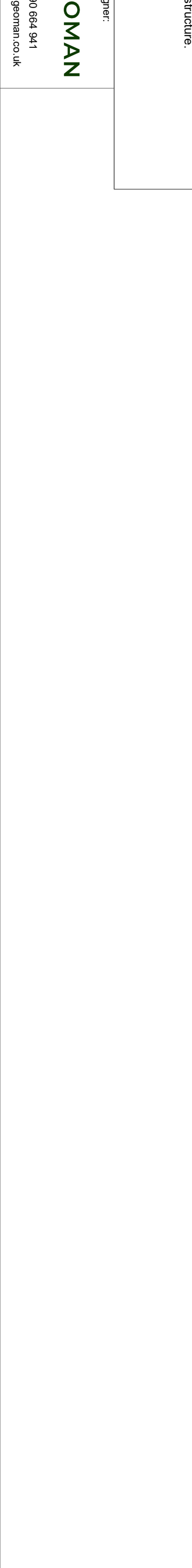
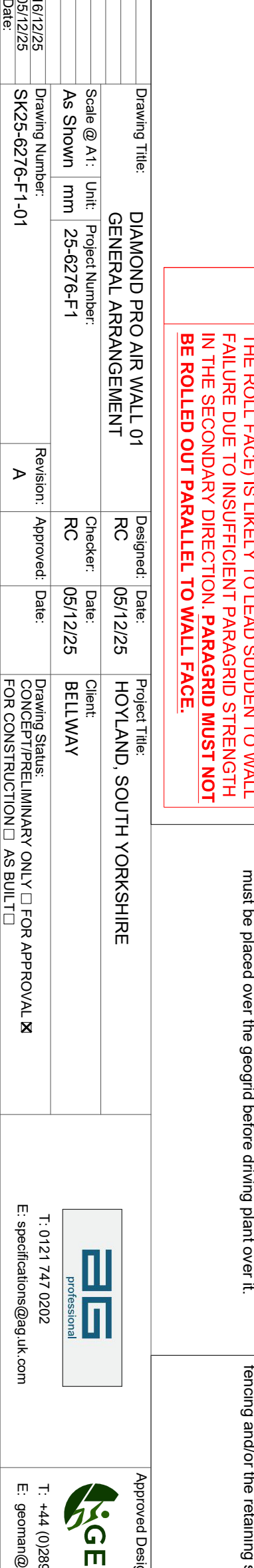
40) TEMPORARY EXCAVATION
Excavation can be safely and without warning. Temporary stability or design of any temporary works is the responsibility of the Contractor.
41) HEAVY CONSTRUCTION TRAFFIC OPERATING CLOSE TO THE WALLS
The Contractor is responsible for the selection of the material to remain in the design. The Contractor is responsible for the selection of the material to remain in the design.
42) STABILISATION APPROVAL
The Contractor is responsible for the selection of the material to remain in the design. The Contractor is responsible for the selection of the material to remain in the design.



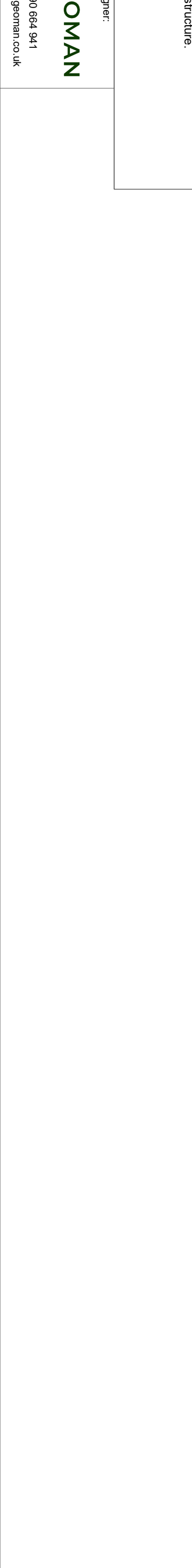
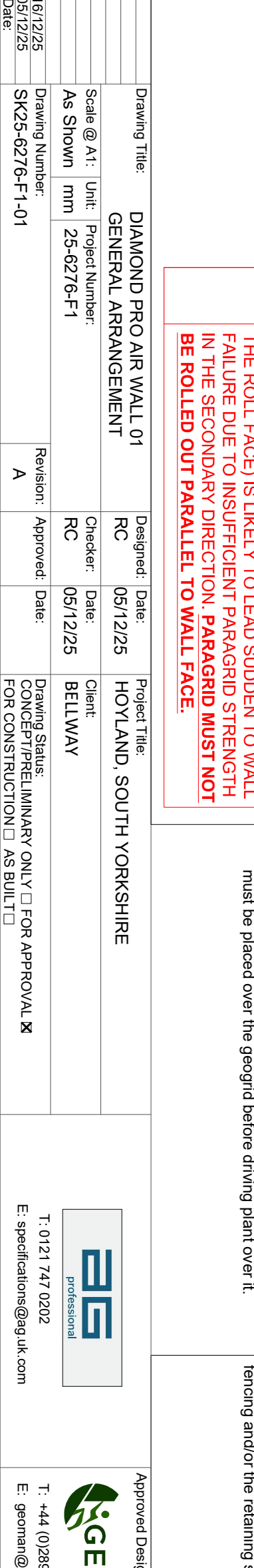
43) RESISTANCE TO VEHICLE IMPACT
Assumed a maximum 15m high lorry (to be designed by others). These points must be fully supported by the geogrid. The Contractor is responsible for the selection of the material to remain in the design.
44) STABILISATION APPROVAL
The Contractor is responsible for the selection of the material to remain in the design. The Contractor is responsible for the selection of the material to remain in the design.



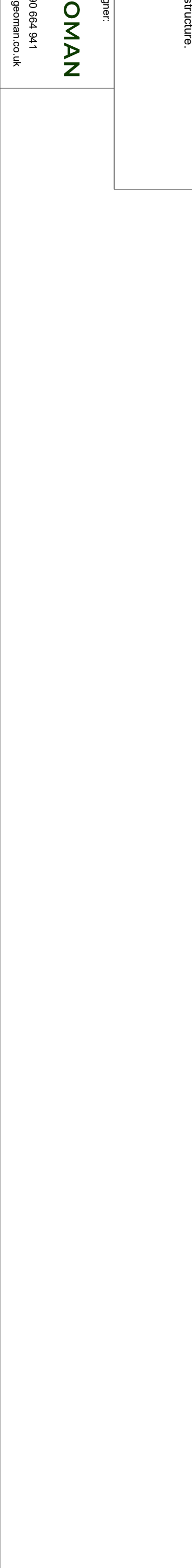
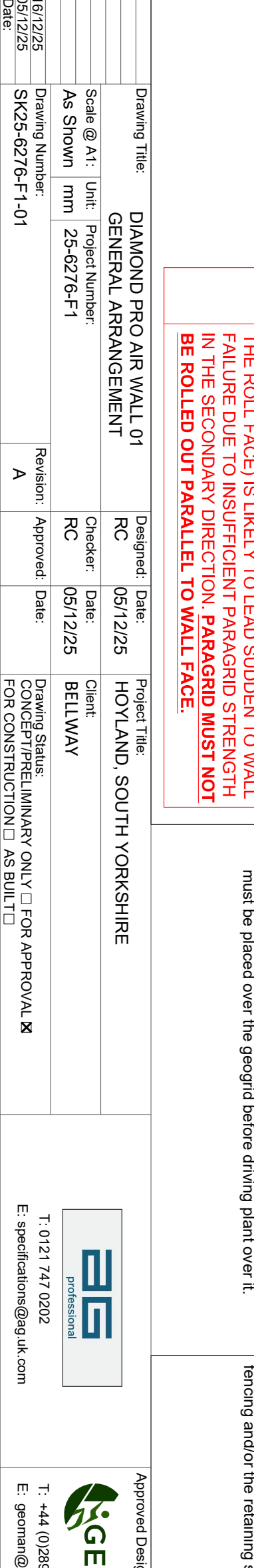
45) SUBGRADE
The subgrade shall be in accordance with the design. The Contractor is responsible for the selection of the material to remain in the design. The Contractor is responsible for the selection of the material to remain in the design.
46) SETTING OUT
The Contractor is responsible for the selection of the material to remain in the design. The Contractor is responsible for the selection of the material to remain in the design.



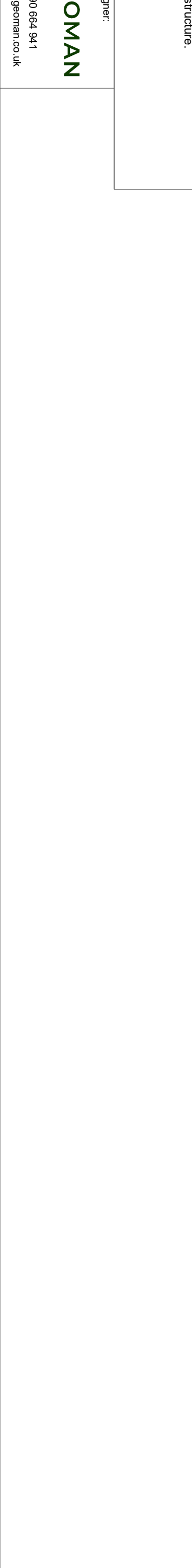
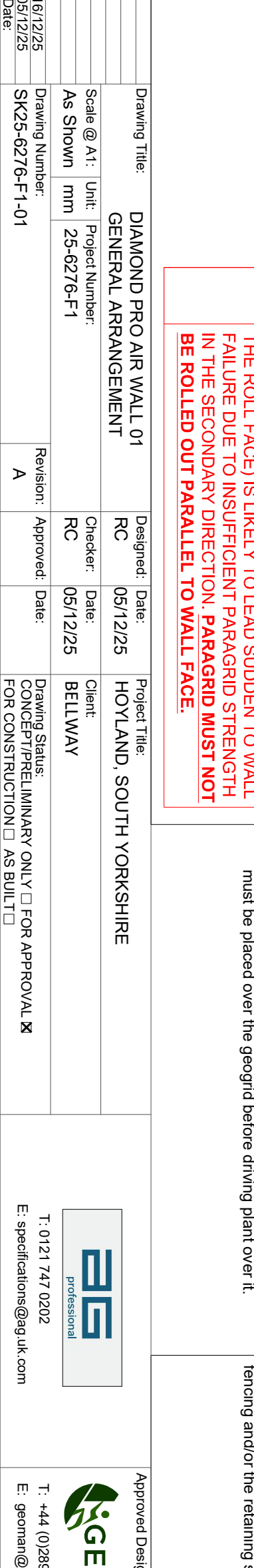
47) WALLING AND OVERLAYS
The Contractor is responsible for the selection of the material to remain in the design. The Contractor is responsible for the selection of the material to remain in the design.
48) NOTES ON CALCULATIONS/BROWNS
The Contractor is responsible for the selection of the material to remain in the design. The Contractor is responsible for the selection of the material to remain in the design.



49) NOTES ON CALCULATIONS/BROWNS
The Contractor is responsible for the selection of the material to remain in the design. The Contractor is responsible for the selection of the material to remain in the design.



50) TEMPORARY EXCAVATION
Excavation can be safely and without warning. Temporary stability or design of any temporary works is the responsibility of the Contractor.
51) HEAVY CONSTRUCTION TRAFFIC OPERATING CLOSE TO THE WALLS
The Contractor is responsible for the selection of the material to remain in the design. The Contractor is responsible for the selection of the material to remain in the design.
52) STABILISATION APPROVAL
The Contractor is responsible for the selection of the material to remain in the design. The Contractor is responsible for the selection of the material to remain in the design.



53) RESISTANCE TO VEHICLE IMPACT
Assumed a maximum 15m high lorry (to be designed by others). These points must be fully supported by the geogrid. The Contractor is responsible for the selection of the material to remain in the design.
54) STABILISATION APPROVAL
The Contractor is responsible for the selection of the material to remain in the design. The Contractor is responsible for the selection of the material to remain in the design.

