

PURCELL

## **WORSBROUGH MILL**

### **HERITAGE IMPACT ASSESSMENT**

November 2020

B Kerr

## **Bev Kerr**

29 Marygate, York, YO30 7WH

info@purcelluk.com

**[www.purcelluk.com](http://www.purcelluk.com)**

All rights in this work are reserved. No part of this work may be reproduced, stored or transmitted in any form or by any means (including without limitation by photocopying or placing on a website) without the prior permission in writing of Purcell except in accordance with the provisions of the Copyright, Designs and Patents Act 1988. Applications for permission to reproduce any part of this work should be addressed to Purcell at info@purcelluk.com.

Undertaking any unauthorised act in relation to this work may result in a civil claim for damages and/or criminal prosecution. Any materials used in this work which are subject to third party copyright have been reproduced under licence from the copyright owner except in the case of works of unknown authorship as defined by the Copyright, Designs and Patents Act 1988. Any person wishing to assert rights in relation to works which have been reproduced as works of unknown authorship should contact Purcell at info@purcelluk.com.

Purcell asserts its moral rights to be identified as the author of this work under the Copyright, Designs and Patents Act 1988.

Purcell® is the trading name of Purcell Architecture LTD.

© Purcell 2019

## CONTENTS

---

1.0	Introduction	4
2.0	Understanding	5
3.0	Brief History of Worsbrough Mill	9
4.0	Statement of Significance	10
5.0	Legislation and Planning Policy	12
6.0	Impact Assessment	13

Appendix A: Bibliography

Appendix B: List Descriptions

## 1.0 INTRODUCTION

---

### 1.1 PURPOSE OF THE REPORT

This Heritage Impact Assessment has been commissioned to accompany an application for works to the Grade II\* Corn Mill and Grade II listed mill cottage at Worsbrough Mill. This application follows an earlier consent from Bamsley Metropolitan Borough Council, application ref 2020/0059 and 2025/0058, for the 'Conversion of existing cottage from office and residential accommodation into new bakery shop (ground floor) and office and staff facilities at first floor'.

The present application seeks a number of minor additional works, specifically the installation of a wheelchair stair hoist providing level access from Top Yard to first floor level of the Mill Cottage, functional improvements within the Corn Mill to facilitate continued use of the mill and the introduction of a temporary storage container.

### 1.2 APPROACH AND METHODOLOGY

This document has been produced to establish an understanding of the significance of the listed Corn Mill and mill cottage and assess the impact of proposed changes. It has been formulated using the assessment methodology contained within the National Planning Policy Framework (NPPF), specifically paragraph 189 and 190, under which a description of the significance of a site, including any contribution made by their setting, must be provided to support any planning applications. As part of determination, Local Authorities must also identify and assess the effect on that significance of any proposed changes.

### 1.3 AUTHORSHIP

This report has been prepared by Beverley Kerr, BA (Hons) (Cantab) MA, Mst (Cantab), ACIfA, Heritage Consultant of Purcell conservation architects and heritage consultants.

### 1.4 EXISTING INFORMATION AND RESOURCES

This report draws upon an earlier heritage report commissioned by the client as part of an application in February 2020 for minor alterations to the site. The report produced by NPS Group is entitled 'Heritage Statement in support of 2020/0058 (Listed Building Consent) and 2020/0059 (Change of Use): Conversion of existing cottage into shop and office space, Worsbrough Mill, Bamsley'.

## 2.0 UNDERSTANDING

---

### 2.1 LOCATION

Worsbrough Mill is located to the South of Bamsley, on the present day A61. The mill is set back from the road and accessed via a footpath.

Worsbrough Mill is located at Worsbrough, Bamsley, S70 5LJ.

### 2.2 DESCRIPTION

The Corn Mill comprises four stories of milling machinery and associated storage, which continue to function, in large, for their originally intended purpose. Machinery and spaces have been adapted throughout to suit the evolving needs of the industry. The mill also operates as a successful visitor attraction.

The Mill Cottage comprises a former cottage with a ground floor café, kitchen and stores. Permission has been granted for the conversion of a ground floor room into a shop and reordering of rooms to provide offices and volunteer accommodation on the first floor. The ground floor café has proved very successful to visitors. However, there is currently no level access to the first floor.

Internally within the Mill Cottage, the finishes largely date to the mid to later twentieth century and are now tired. On both floors, ceilings are low, doors are modern, and walls are dry lined. Skirting and architraves are plain and, in some areas, exists surface mounted trucking and services. Many fireplaces have been removed or blocked and replaced by modern storage heaters. Modern security roller shutters are less-than sympathetic to the aesthetics of the interior.

The listed description of the Grade II\* Listed Corn Mill and Grade II Listed mill cottage by Historic England is as follows:

Corn mill now museum.

*Early C17 with addition of c1843. Deeply coursed dressed sandstone, stone slate and Welsh slate roofs. C17 part on left is two storeys and three bays (internally); C19 part on right three storeys with loft, four bays. C17 part: wide doorway to right has external stone ramp and massive lintel, four-light double-chamfered, mullioned window on its left has iron stanchions, beyond is a broad buttress with six chamfered offsets and with small window, another door to far left. Original three-light mullioned window to first floor right has iron stanchions and casement with glazing bars, later two-light mullioned window above buttress. Left return of C17 part: quoined first-floor doorway with massive lintel. C19 part: bay four breaks forward and has round-headed iron casement with glazing bars, bay three doorway with external stone ramp, first-floor doorway above has ashlar surround. Other bays with thirty-six-pane iron casements with projecting stone sills and plain lintels, bay two window on second floor is blind. Ashlar gable copings with small end stacks. Rear of C19 part has three bays of similar iron casements. Interior: C17 part has early-C19 cast-iron overshot wheel driving three pairs of stones. Original king-post trusses with trenched purlins. C19 part, originally steam-powered, now contains a rare Hornsby oil engine of 1911. History and technical details of mill discussed at length in (R.Shortland-Ball, 'Worsbrough Corn Mill, South Yorkshire', Industrial Archaeology Review, 2, No 3, 1978.*

Miller's house now museum offices.

*Probably mid C18 with C19 alterations and additions. Rubble-sandstone, stone slate roof. 2 storeys, 3 windows to 1st floor with wing to rear left, single-room addition set back to left. Large quoins. Main range has quoined central doorway with deep lintel, two 2-pane sashes on right with altered doorway beyond, paired 2-pane sashes on left in mullioned stone surround. 1st-floor windows, as ground-floor-left, rise above eaves as flat-topped dormers. Shaped kneelers and chamfered gable copings on left rise to brick end stack built onto original external end stack with offsets, brick ridge stack between bays 2 and 3. Addition set back on left: 4-panel door in ashlar surround has small 4-pane sash on its left, brick end stack. Rear wing: left*

*return has tripartite and paired sashes. Addition set back on right of main range not of special interest. Included for group value.<sup>1</sup>*

---

<sup>1</sup> Historic England, The List, <https://historicengland.org.uk/listing/the-list/list-entry/1192294> , [last accessed 17th November 2020]



Corn Mill: North Elevation



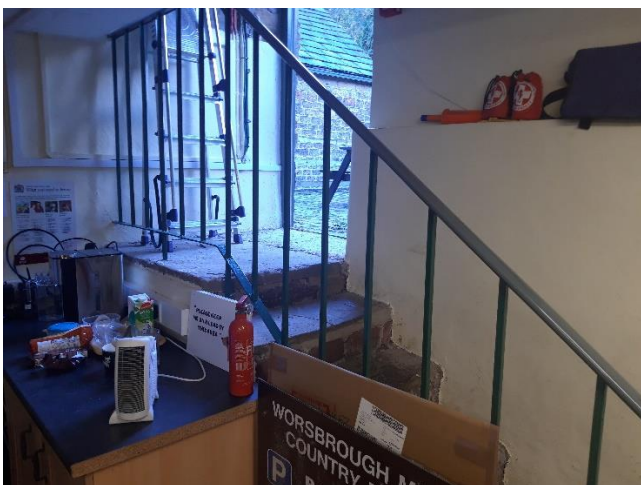
Corn Mill: Mill stones and mechanism



Upper Yard to Mill Cottage



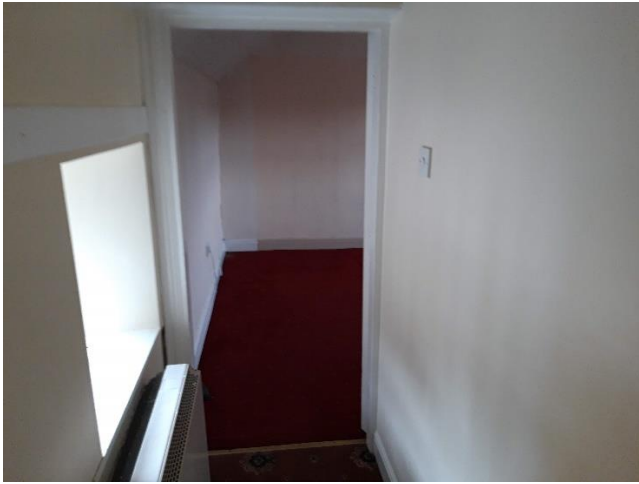
Mill Cottage: Front elevation



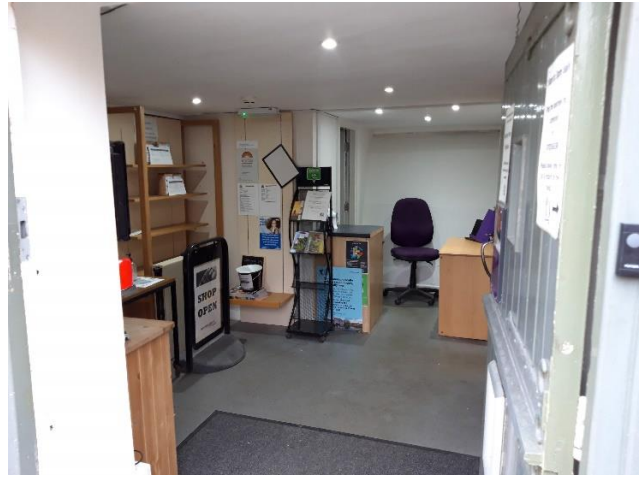
Mill Cottage: Stone stair and balustrade in 0/001



Mill Cottage: Security shutter on 0/001



Mill Cottage First floor: proposed area for new wheelchair hoist and corridor



Mill Cottage: Room 0/002



Existing levels within the Top Yard adjacent to outbuildings

### 3.0 BRIEF HISTORY OF WORSBROUGH MILL

---

*Note, this section is taken from the previous planning application document by NPS Group, entitled 'Heritage Statement In support of 2020/0058 (Listed Building Consent) and 2020/0059 (Change of Use). Conversion of existing cottage into shop and office space, Worsbrough Mill, Barnsley, February 2020.'*

The first record of a mill at Worsbrough was in the Domesday book of 1086, although the exact location of the mill along the River Dove is unknown.

The oldest part of the mill standing today dates from about 1625 and forms the two-storey stone building known as the Old Mill, which houses the waterwheel. Before the Mill House was built in the mid-18th century the miller and his family would have lived in the mill itself. There are large fireplaces on both the ground and first floors and the lintel over the fireplace on the first floor is inscribed with several dates and initials of the millers.

The Old Mill was probably modernised in the early 1820's to improve its output, and in the 1840's the New Mill was built next door. The machinery in the New Mill was powered by a steam engine and a third floor, where grain could be stored in bulk, was added.

Trade for corn and flour began to drop off towards the end of the 19th century as cheap imported wheat came in from abroad. By the early 20th century Worsbrough's New Mill became disused and the steam engine was scrapped. The old water mill continued to grind corn and oats for the local farmers to feed their animals well into the 1960's.

In 1972 West Riding County Council began to restore the mill as a working museum. The steam engine had been scrapped in 1922 so a rare 1911 Hornsby hot-bulb oil engine, formerly from Sykehouse Windmill was rebuilt in the engine room.

A reorganisation in local government in 1974 meant that South Yorkshire County Council took over the project. The museum opened to the public in 1976. It is now owned and operated by Barnsley Council.

## 4.0 STATEMENT OF SIGNIFICANCE

---

### 4.1 ASSESSING SIGNIFICANCE

National and local planning policy requires an applicant to assess the significance and impact of proposals on the historic environment. Historic England's Historic Environment Good Practice Advice in Planning Note 2: Managing Significance in Decision-Taking in the Historic Environment, 2015, states that:

*Development proposals that affect the historic environment are much more likely to gain the necessary permissions and create successful places if they are designed with the knowledge and understanding of the significance of the heritage assets they may affect.*

Significance can be defined as the sum of the cultural heritage values that make a place important to this and future generations. The aim of conservation is to sensitively manage change to a place to ensure that its significance is not only protected, but also revealed, reinforced and enhanced at every possible opportunity.

The range of values that may contribute to the significance of a place can be categorised under the following headings. These values are taken from Historic England's Statements of Heritage Significance: Analysing Significance in Heritage Assets. Historic England Advice Note 12 (2019).

**Historic Interest** - An interest in past lives and events (including pre-historic). Heritage assets can illustrate or be associated with them. Heritage assets with historic interest not only provide a material record of our nation's history but can also provide meaning for communities derived from their collective experience of a place and can symbolise wider values such as faith and cultural identity.

**Archaeological Interest** - There will be archaeological interest in a heritage asset if it holds, or potentially holds, evidence of past human activity worthy of expert investigation at some point.

**Architectural and Artistic Interest** - These are interests in the design and general aesthetics of a place. They can arise from conscious design or fortuitously from the way the heritage asset has evolved. More specifically, architectural interest is an interest in the art or science of the design, construction, craftsmanship and decoration of buildings and structures of all types. Artistic interest is an interest in other human creative skills, like sculpture.

### 4.2 STATEMENT OF SIGNIFICANCE

*Note, this section draws heavily upon the previous planning application document by NPS Group, entitled 'Heritage Statement In support of 2020/0058 (Listed Building Consent) and 2020/0059 (Change of Use). Conversion of existing cottage into shop and office space, Worsbrough Mill, Barnsley, February 2020.*

#### 4.2.1 HISTORIC INTEREST

Overall, the principal historical value remaining here would arise from the association with previous owners and local landowners. The illustrative value embodied by the story the place has to offer and the relative authenticity of the spaces contributes strongly. However, internal modifications over time to the cottage mean any associative or illustrative value derived from this space is very limited. The Corn Mill retains a greater degree of earlier fittings and machinery.

Additionally, the Mill and cottages have a high degree of cultural and social value. The buildings are now run by BMBC as a visitor attraction but also offers learning and engagement activities relating to the historic operation of the mill. This allows visitors a good appreciation and understanding of the working of the mill and its historic importance including the central role it once would have played within the community. Even so, the mill cottage itself and its internal arrangement contributes little due to its modern fabric.

High Historical Illustrative, Associative and Cultural Interest

**4.2.2 ARCHAEOLOGICAL INTEREST**

Overall, the mill has substantial evidential value with respect to what it can tell about past processes and working activities associated with the milling of grain and flour production. The arrangement on site and the association the buildings have with each other reflects an obvious functional relationship where the Miller lived immediately adjacent to his place of work. The mill cottage is later than the mill (although earlier than the mill extension). Internally, the mill cottage is largely modernised. The spaces within the cottage that are the focus of this application are adorned with modern 20th century fixtures and fittings so the potential for evidential value in the internal fabric is limited.

High Evidential Interest

**4.2.3 ARCHITECTURAL AND ARTISTIC INTEREST**

Overall, there is clearly some designed aesthetic value present, despite the buildings being relatively functional and vernacular. The greatest contributor is the fortuitous aesthetic value embodied by the arrangement of the site, historic buildings that survive, and the sense of authenticity this creates. However again, internally within the cottage, this is much less apparent where historic fixtures and fittings are no longer present and so the aesthetic value is relatively low.

External	Medium / High Aesthetic Interest
Corn Mill Internal	Medium Aesthetic Interest
Mill Cottage Internal	Low Aesthetic Interest

## 5.0 LEGISLATION AND PLANNING POLICY

---

### 5.1 PLANNING (LISTED BUILDINGS AND CONSERVATION AREAS) ACT (1990)

Listed Buildings are designated under the Planning (Listed Buildings and Conservation Areas) Act 1990 for their special architectural or historic interest. Conservation Areas are also protected under Section 69 of the same act. In 2013 the government abolished the requirement for Conservation Area Consent under the Enterprise and Regulatory Reform Act 2013. This has been replaced with a requirement for planning permission for demolition of a building in a Conservation Area.

In terms of the impact on the special character and appearance of the listed building, Section 16 (2) of the Planning (Listed Buildings and Conservation Areas) Act 1990, states:

*In considering whether to grant listed building consent for any works the local planning authority or the Secretary of State shall have special regard to the desirability of preserving the building or its setting or any features of special architectural or historic interest which it possesses*

### 5.2 NATIONAL PLANNING POLICY FRAMEWORK

The National Planning Policy Framework was published 27 March 2012 (updated 25th July 2018) and sets out the Government's planning policies for England and how these are expected to be applied in 'the presumption in favour of sustainable development'. It outlines the Government's requirements for the planning system only to the extent that it is relevant, proportionate, and necessary to do so. The NPPF is a material consideration for local planning authorities in determining planning and LBC applications.

NPPF para 189 and 190: The NPPF requires applicants to describe the significance (heritage) of any heritage asset affected by a proposal including any contribution made by the setting of the asset. The level of detail should be proportionate to the importance of the asset and the degree of intervention the proposal represents. The local Planning Authorities will take the heritage significance of an asset into account and consider any impacts on the asset to avoid conflict with the conservation of the asset.

NPPF para 193: Great weight given to an asset's conservation, irrespective of the degree of harm.

NPPF para 194: Any harm to or loss of significance will require clear and convincing justification.

### 5.3 LOCAL PLANNING POLICY

#### BARNESLEY LOCAL PLAN POLICIES

Barnsley Local Plan Policy HE1: The Historic Environment: Positively encourage developments that help in the management, conservation and understanding of the historic environment

Barnsley Local Plan Policy HE3: Developments affecting Historic Buildings: Proposals involving historic buildings should conserve and where appropriate enhance, respect historic precedents, and capitalise on opportunities to reveal significance.

## 6.0 IMPACT ASSESSMENT

---

### 6.1 SITE PROPOSALS

This section of the report should be read in conjunction with the Design and Access Statement (DAS) and technical drawings, which provide a full description of the proposals.

The present application follows an earlier application 2020/0058(LBC) and 2020/0059 submitted in January 2020 and approved in April 2020 for:

*Conversion of existing cottage from office and residential accommodation into new bakery shop (ground floor) and office and staff facilities at first floor with associated internal alterations.*

This application seeks consent for a number of additional minor works as follows:

#### Mill Cottage Ground Floor:

- Remove existing modern external door and frame into 0/001 from the Top Yard. Replace with new solid hardwood boarded external door on 180degree hinges to open back against external wall. New internal glazed door within same reveal for daytime use.
- Rehang door into lobby 0/008 to open outwards and remove modern door from base of existing staircase to improve circulation and egress routes.
- Relocate existing doorway to store 0/010.
- Relocate door into modern store 0/003 to facilitate works above.
- Remove existing floor mounted railings in 0/001 and install new handrail and balustrades, face fixed to side of staircase.
- Form new timber covering to existing internal roller shutter to conceal shutters.
- Take down modern partition in existing opening to reopen former doorway between 0/002 and 0/004. Insert new glazed internal door.
- Remove modern coverings from 2no. windows to 0/001 and reinstate existing windows. Renew internal security shutters and form new timber covering to existing to offer aesthetic improvement to existing security measures.
- Locally lift and re-bed existing stone sets outside of doorway into 0/001 to provide level access into building from the Middle Yard.
- Remove modern partitions forming rooms 0/006 and 0/007 to return room 0/005 to its previous proportions.
- Renew services, floor finishes and wall/ceiling decoration to areas affected by the proposed works.

#### Mill Cottage First Floor:

- Form new light-weight fire rated stud partition in 1/003 with new door to match style of adjacent existing.
- Form new opening in existing internal wall in 1/003 to provide access into new, extended corridor at first floor level. Trim out existing floor structure and introduce new timber steps within corridor.
- New wall mounted, fold down wheelchair stair hoist providing level access from Top Yard to first floor level.
- Take down modern flat ceiling and storage above 0/001. Reinststate existing ground floor room to full height to underside of roof. Carry out localised repair and making good as required following removal of ceiling and renew services including track lighting and smoke detection to suit revised volume of space.
- Remove modern infill to reopen former aperture and introduce new fire rated glazed screen between 1/003 and shop 0/001.

- Renew services, floor finishes and wall/ceiling decoration to areas affected by the proposed works.

Corn Mill:

- Introduce new electric motor at ground floor level, driving mill stones via existing horizontal shaft at floor level.
- Introduce new internal grain storage silo, utilising and adapting existing voids and openings within floors to facilitate installation with minimal fabric intervention. Introduce demountable blackout coverings to the inside of existing windows to the south elevation at each floor behind the storage silo.

External Works:

- Adapt existing stone sett hard landscaping to the south of the Mill Cottage within the Top Yard to overcome existing steps and level changes to offer level access throughout the area
- Introduce a new, self-contained, temporary storage container to the north of the site, adjacent to the existing Learning Centre

## 6.2 IMPACT ASSESSMENT METHODOLOGY

An assessment of impact measures the identified levels of significance against the degree of change proposed. High levels of change to features identified as highly significant will be at odds with national and local planning policy, and Historic England guidance; consequently, they should not be permitted due to the high adverse impact it would entail. Where only a minor change is proposed to an element of medium or high significance, this will generally be calculated as having a neutral or low adverse impact on heritage value. Where a building or feature is considered to be of limited heritage significance, a much larger degree of change may be allowed.

## 6.3 IMPACT ASSESSMENT

### MILL COTTAGE GROUND FLOOR

Proposal	Overall Heritage Significance	Discussion	Heritage Impact
Rehang / relocate doors in lobby 0/008 and 0/010.	Interior - Low Exterior - High	These proposals improve access into this space, negating the need to remove and reposition the staircase. This constitutes minor change to the overall appearance of these spaces which will not impact on the heritage significance or an ability to appreciate it. Any potential impact is justified by the improved access and negating the need to introduce a new staircase.	Neutral / Imperceptible Impact, with perceptible public benefits
Relocate door in 0/003.	Low	This is necessary to enable proposals for wheelchair access on the first floor. The change is only minor, and any potential impact is justified by the public benefit of accessibility above.	Neutral / Low Impact, with perceptible public benefits

Replace door and frame into rear of 0/001 and install new internal glazed door.	Interior - Low Exterior - High	The door and frame to be removed are modern and will be replaced with a hardwood door and frame sympathetic in style. The door will be mounted to allow it to be secured against the external wall during operating hours but will be closed out-of-hours. A glazed door will provide access and light during operating hours benefitting users without impacting on the external appearance of the cottage.	Neutral / Imperceptible Impact
Reinstate windows to rear of 0/001 and install timber covers to roller shutters.	Interior - Low Exterior - High	The present appearance of these windows will be significantly improved internally and externally by the proposals, without impacting on security measures.	High Beneficial Impact
Remove and install new stair railings in 0/001.	Low	The proposals to face fix the handrail and balustrade will improve access on the stair by widening the clear width of the existing staircase. The detail of the balustrade will match existing and the impact on heritage will be minor; any potential impact is justified by the improved accessibility and public benefit.	Very Low Impact, with perceptible public benefits
Removal of modern partition between 0/002 and 0/004.	Low	These proposals improve access between these spaces whilst improving the internal aesthetics of the listed building through the reversal of modern interventions.	Low Beneficial Impact
Lift and rebed stone setts to entrance door to 0/001.	High	This proposal is a minor change to the surfacing of the entrance into this space but allows level access into the shop. Impact will be imperceptible.	Neutral / Imperceptible Impact, with perceptible public benefits
Take down modern ceiling above 0/001.	Low	This proposal will see the room reinstated to its full height. This will also allow the reopening of a former aperture and the insertion of a glazed screen. The proposals improve the historic and aesthetic interest of the space.	Low Beneficial Impact
Remove modern partitions forming rooms 0/006 and 0/007 to return room 0/005 to its previous proportions	Low	This proposal will remove modern accretions from within the building and return the larger proportions of the room. The removal of modern partitions will serve to offer clarity of previous layout	Low Beneficial Impact

**MILL COTTAGE FIRST FLOOR**

Proposal	Overall Heritage Significance	Discussion	Heritage Impact
----------	-------------------------------	------------	-----------------

Form new corridor to allow level access from Top Yard to first floor and install fold down wheelchair hoist.	Low	The proposals require the loss of a small amount of historic fabric by the formation of an opening, installation of new flooring and the installation of a stud partition. Any negative impact is justified by the public benefit of wheelchair accessibility. The solution is low impact and appropriate for the size of the building.	Low Negative Impact, with high perceptible public benefits
--	-----	---	--

**CORN MILL**

Proposal	Overall Heritage Significance	Discussion	Heritage Impact
Introduce new electric motor at ground floor level, driving mill stones via existing horizontal shaft at floor level	Medium	The proposals will involve a small amount of adaptation of existing machinery, and the addition of a localised electric motor. The proposed modernisation of this aspect of the machinery will benefit the ongoing sustainable use of the mill as a working mill.	Low Negative Impact, with high perceptible benefits
Introduce new internal grain storage silo to full height of the building	Medium	The introduction of a new grain storage silo will utilise and adapt existing voids and openings within floors to facilitate installation with minimal fabric intervention. Minor localised adaptation of existing fabric will be required to introduce this silo, however, the principle is in line with previous adaptations of the building and its machinery to the suit evolution of the milling process and current need. The introduction of a new silo allows for the continued sustainable use of the mill. New demountable blackout coverings will be intalled to the inside of existing windows to the south elevation at each floor behind the storage silo.	Low Negative Impact, with high perceptible benefits

**EXTERNAL WORKS**

Proposal	Overall Heritage Significance	Discussion	Heritage Impact
Adapt existing stone sett hard landscaping to the south of the Mill Cottage within the Top Yard	Medium	Careful adaptation of hard landscaping in the proximity of the existing outbuildings will overcome existing steps and level changes to offer level access throughout the area.	Low Negative Impact, with high perceptible benefits
Introduce a new, self-contained, temporary storage container to the north of the site, adjacent	Medium	The proposed storage container will be approximately 20ft long x 8ft wide x 8ft high and will take the form of a standard shipping container clad with 'rustic' timber cladding. The container will be positioned to the north	Low Negative Impact, with high perceptible benefits

to the existing Learning Centre		of an existing Learning Centre building, thus masking the container from view from key visitor approach points. The scale of the container is commensurate with the scale of operation and continued use of the mill.	
---------------------------------	--	---	--

## APPENDICES:

---

### APPENDIX A: BIBLIOGRAPHY

#### PLANNING POLICY AND GUIDANCE

Department of Communities and Local Government, 2019, National Planning Policy Framework (NPPF)  
[https://assets.publishing.service.gov.uk/government/uploads/system/uploads/attachment\\_data/file/810197/NPPF\\_Feb\\_2019\\_revised.pdf](https://assets.publishing.service.gov.uk/government/uploads/system/uploads/attachment_data/file/810197/NPPF_Feb_2019_revised.pdf)

Historic England, 2008, *Conservation Principles, Policies and Guidance*,  
<https://historicengland.org.uk/images-books/publications/conservation-principles-sustainable-management-historic-environment/>

Historic England, 2019, *Statements of Heritage Significance: Analysing Significance in Heritage Assets. Historic England Advice Note 12*  
<https://historicengland.org.uk/images-books/publications/statements-heritage-significance-advice-note-12/>

Barnsley Metropolitan Borough Council Planning Portal  
<https://www.barnsley.gov.uk/services/planning-and-buildings/view-or-comment-on-planning-applications/>

Barnsley Metropolitan Borough Council Planning Policy  
<https://www.barnsley.gov.uk/services/planning-and-buildings/local-planning-and-development/planning-policy/>

#### UNPUBLISHED SOURCES

NPS Group, 2020, Heritage Statement In support of 2020/0058 (Listed Building Consent) and 2020/0059 (Change of Use). Conversion of existing cottage into shop and office space, Worsbrough Mill, Barnsley

#### WEBSITES

Historic England, National Heritage List, <https://historicengland.org.uk/listing/the-list/>

## APPENDIX B: LIST DESCRIPTIONS

THE MILL COTTAGE (1192294)

Heritage Category: Listed Building

Grade: II

List Entry Number: 1192294

Date first listed: 04-Dec-1986

Statutory Address: THE MILL COTTAGE, PARK ROAD

District: Bamsley (Metropolitan Authority)

National Grid Reference: SE 35190 03346

Details

WORSBROUGH PARK ROAD SE30SW (west side, off) 1/91 The Mill Cottage GV II Miller's house now museum offices. Probably mid C18 with C19 alterations and additions. Rubble-sandstone, stone slate roof. 2 storeys, 3 windows to 1st floor with wing to rear left, single-room addition set back to left. Large quoins. Main range has quoined central doorway with deep lintel, two 2-pane sashes on right with altered doorway beyond, paired 2-pane sashes on left in mullioned stone surround. 1st-floor windows, as ground-floor-left, rise above eaves as flat-topped dormers. Shaped kneelers and chamfered gable copings on left rise to brick end stack built onto original external end stack with offsets, brick ridge stack between bays 2 and 3. Addition set back on left: 4-panel door in ashlar surround has small 4-pane sash on its left, brick end stack. Rear wing: left return has tripartite and paired sashes. Addition set back on right of main range not of special interest. Included for group value. Listing NGR: SE3519003346

Worsbrough Corn Mill (1151044)

Heritage Category: Listed Building

Grade: II\*

List Entry Number: 1151044

Date first listed: 11-Nov-1966

Date of most recent amendment: 04-Dec-1986

Statutory Address: Worsbrough Corn Mill, Park Road

SE30SW 1/90 WORSBROUGH PARK ROAD (west side, off) Worsbrough Corn Mill GV II\* Corn mill now museum. Early C17 with addition of c1843. Deeply coursed dressed sandstone, stone slate and Welsh slate roofs. C17 part on left is two storeys and three bays (internally); C19 part on right three storeys with loft, four bays. C17 part: wide doorway to right has external stone ramp and massive lintel, four-light double-chamfered, mullioned window on its left has iron stanchions, beyond is a broad buttress with six chamfered offsets and with small window, another door to far left. Original three-light mullioned window to first floor right has iron stanchions and casement with glazing bars, later two-light mullioned window above buttress. Left return of C17 part: quoined first-floor doorway with massive lintel. C19 part: bay four breaks forward and has round-headed iron casement with glazing bars, bay three doorway with external stone ramp, first-floor doorway above has ashlar surround. Other bays with thirty-six-pane iron casements with projecting stone sills and plain lintels, bay two window on second floor is blind. Ashlar gable copings with small end stacks. Rear of C19 part has three bays of similar iron casements. Interior: C17 part has early-C19 cast-iron overshot wheel driving three pairs of stones. Original king-post trusses with trenched purlins. C19 part, originally steam-powered, now contains a rare Hornsby oil engine of 1911. History and technical details of mill discussed at length in (R.Shortland-Ball, 'Worsbrough Corn Mill, South Yorkshire', *Industrial Archaeology Review*, 2, No 3, 1978. Listing NGR: SE3494503326