



FRONT ELEVATION

TYPE B - END

TYPE B - MID

TYPE B - ALTERNATE END

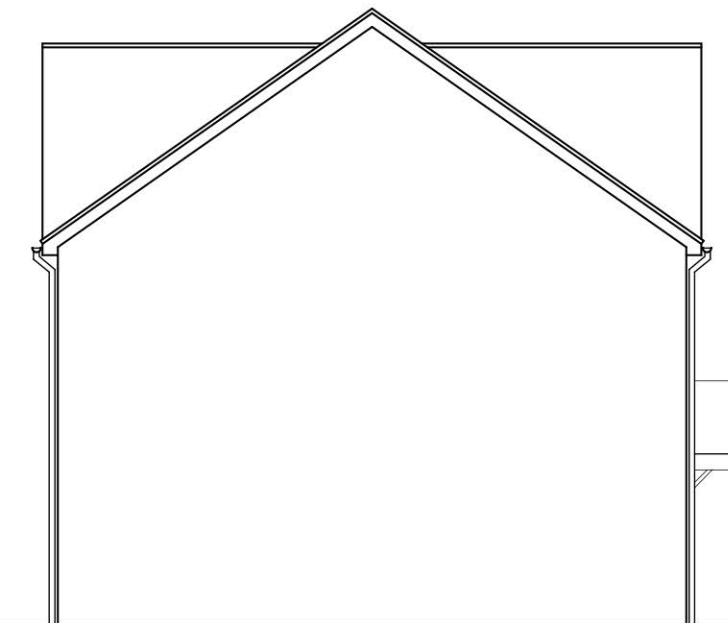


REAR ELEVATION

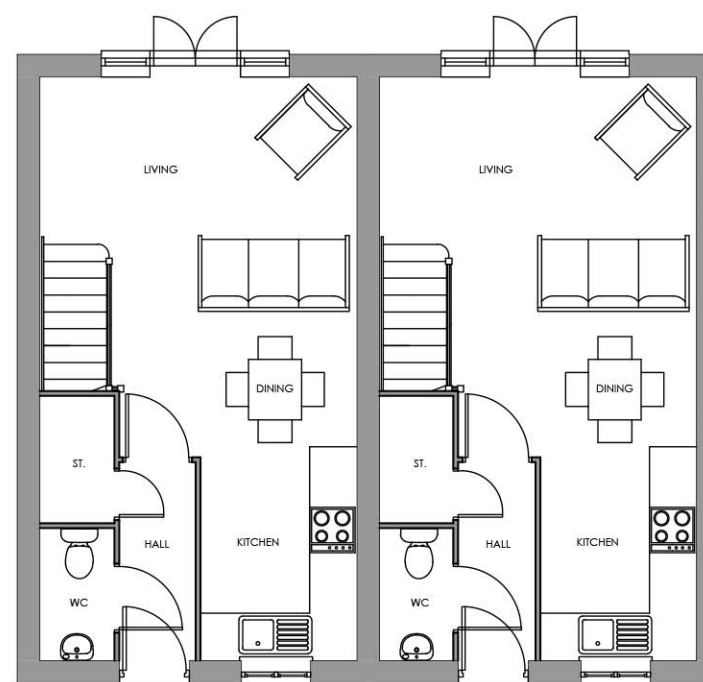
TYPE B - ALTERNATE END

TYPE B - MID

TYPE B - END



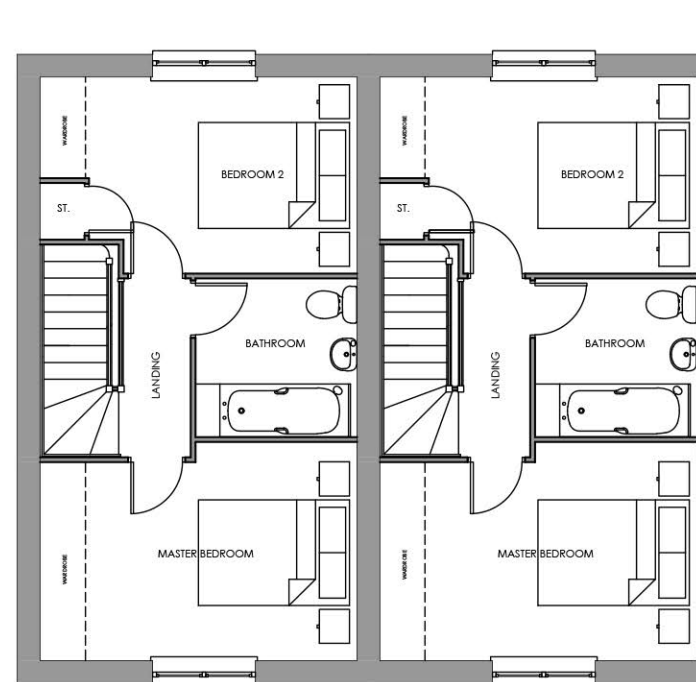
SIDE ELEVATION



GROUND FLOOR PLAN

TYPE B - END

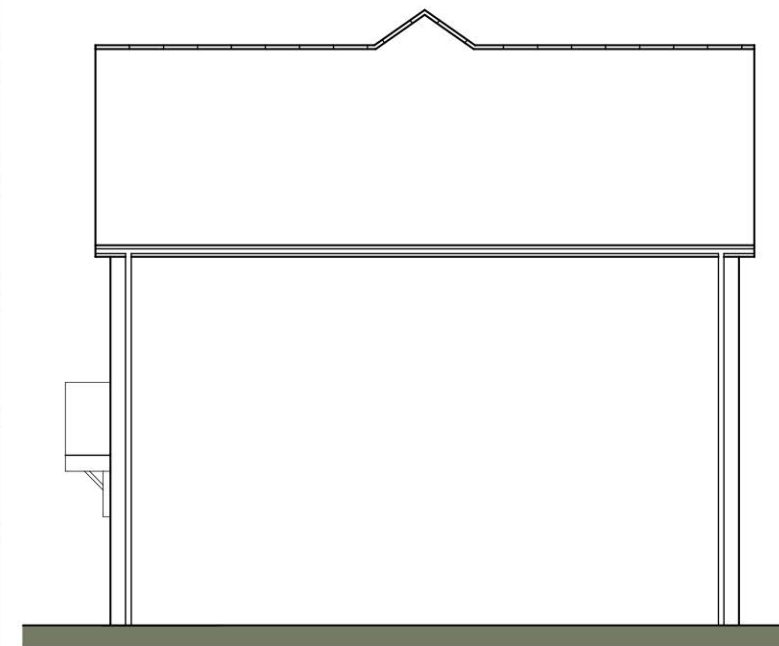
TYPE B - MID



FIRST FLOOR PLAN

TYPE B - END

TYPE B - MID



SIDE ELEVATION

Scaled @ 1:100



REV.	DESCRIPTION	BY:	DATE:
A	Minor internal amendments to clients comments	TW	21.03.19

STEN
ARCHITECTURE

Suite 4, Unit 1,
Benton Office Park,
Bennett Avenue,
Horbury,
Wakefield,
WF4 5RA
Tel: 01924 669424

Web: www.sten-architecture.co.uk
Twitter: @STEN_arch
Facebook: [stenarchitectureitd](https://www.facebook.com/stenarchitectureitd)
LinkedIn: [Sten Architecture](https://www.linkedin.com/company/sten-architecture)

CLIENT:	Premier Construction Nothern 51 Rimington Road, Wombwell Barnsley S73 8DQ			TITLE:	Planning Drawings Type B		
SITE:	Gypsy Lane Wombwell			SCALE AT A3:	1:100	DATE:	25.02.19
				DRAWN:	TW	CHECKED:	
				PROJECT NO:	1876	DRAWING NO:	1876.TB.01
				REVISION:			A