



# ARBORICULTURAL METHOD STATEMENT

to BS 5837:2012 at:

**9 Broom Close,  
Barnsley,  
S70 3EG**

This document describes how the trees will be protected and managed during the development of this site. It explains how and when the protection measures must be installed and maintained throughout the development.

A copy of this document report must be permanently available on site for the duration of all development activity and should be referenced for practical guidance on how to protect the retained trees at this site.

Prepared for:  
***JK Planning and Design Service Ltd***

Date: *January 2025*

Reference: *AWA6265bAMS*

*TMP006 – D  
Template Revision 01  
Auth By: APW  
Date: 09/09/2024*

 Institute of  
Chartered Foresters  
Registered Consultant

# Contents

- 1. INTRODUCTION ..... 3**
- 2. METHOD STATEMENT TIMELINE..... 5**
- 3. TREE MANAGEMENT..... 7**
- 4. TREE PROTECTION..... 7**
- 5. WORKS CLOSE TO RETAINED TREES ..... 9**
- 6. SIGNATURE ..... 11**
  
- APPENDIX 1: IMAGES AND FIGURES ..... 12**
- APPENDIX 2: RELEVANT CONTACT DETAILS ..... 15**
- APPENDIX 3: TREE DATA AND WORKS SCHEDULE ..... 16**
- APPENDIX 4: TREE PROTECTION PLAN ..... 17**

## 1. Introduction

### 1.1 Instruction

1.1.1 We were instructed by JK Planning and Design Service Ltd to prepare an arboricultural method statement for the proposed development.

### 1.2 Purpose

1.2.1 This method statement has been prepared in order to demonstrate that the development operations at this site can be undertaken with minimal risk of adverse impact on the trees to be retained.

1.2.2 This method statement conforms to BS 5837:2012 *Trees in relation to design, demolition and construction - Recommendations*. It is based on the arboricultural data, collected at a site visit during June 2024, detailed within Appendix 3 of this report.

### 1.3 Description of Development

1.3.1 It is proposed to demolish the existing building and build a new residential development with associated access, parking, landscaping and facilities. The proposed development layout has been provided by my client and is the basis for the Tree Protection Plan at Appendix 4.

### 1.4 Details of Consent

1.4.1 Planning consent is subject to this method statement being agreed upon in advance by the Local Planning Authority. The contents of this report must be adhered to, before, during, and after the construction phase.

1.4.2 As such, no equipment, machinery or materials shall be brought onto the site in connection with the development until this arboricultural method statement detailing tree management and tree protection measures has been submitted to and approved by the Local Planning Authority.

## 1.5 Legal

- 1.5.1 The following advice is for guidance purposes only. Some trees are protected by legislation, and it is essential that the legal status of trees is established prior to carrying out works to them.
- 1.5.2 Unauthorised work to protected trees could lead to prosecution, resulting in enforcement action such as fines or a criminal record. Tree Preservation Orders, Conservation Areas, Planning Conditions, Felling Licences or Restrictive Covenants legally protect many trees in the UK.
- 1.5.3 An online search was undertaken with Barnsley Metropolitan Borough Council on 07/10/24 to check whether any trees at the site are protected by a Tree Preservation Order or are located within a Conservation Area. As of this date no trees at the site are protected by a Tree Preservation Order or are within a Conservation Area.
- 1.5.4 Due to the large potential penalties for illegally carrying out work to protected trees, before authorising any tree works a further check should be made with the Local Planning Authority to confirm if any trees are covered by a Tree Preservation Order or are within a Conservation Area. If either applies, then statutory permission is required before any works can take place (unless such work is approved as part of full planning permission).
- 1.5.5 The Multi-Agency Geographical Information for the Countryside (MAGIC) website was used to search for areas of ancient woodlands listed on the Ancient Woodland (DEFRA 2021), and a check for catalogued Ancient and Veteran trees using the woodland trust ancient tree inventory (ATI) (Woodland Trust 2021).
- 1.5.6 It was confirmed that there are no designated ancient woodlands or veteran or ancient trees within the survey area.
- 1.5.7 Trees provide a wide range of habitats for many species, some of which are legally protected such as bats, nesting birds, badgers and dormice. It is essential that appropriate care is taken to ensure that this legislation is not contravened.
- 1.5.8 When appointing a tree surgeon, only properly qualified and experienced companies should be used, who have adequate Public Liability and Employer's Liability Insurance.
- 1.5.9 All tree work should be carried out according to British Standard 3998:2010 Tree Work - Recommendations.

## 2. Method Statement Timeline

### 2.1 Overview of Sequence of Operations

2.1.1 In overview, it is necessary to undertake the following sequence of operations in relation to arboricultural input for development operations.

- 1 Method statement approved by the LPA
- 2 Undertake tree works
- 3 Install tree protection measures
- 4 Pre commencement meeting/ confirm fencing is as specified
- 5 Construct new development
- 6 Remove tree protection fencing and undertake paving/soft landscaping within RPAs.

### 2.2 Specific Sequence of Operations

2.2.1 The following timeline table informs the key principles for development operations proceeding in relation to arboricultural requirements conditioned as part of this method statement.

2.2.2 The actions and timescales within this table must be adhered to in order to discharge the arboricultural method statement planning condition for this site.

2.2.3 The precise timing and order of some of the development operations may need to be changed due to site specific operational requirements, yet any operations that may affect the trees on the site must be done so under arboricultural supervision by a suitably qualified person appointed by the contractor.

<b>Sequence of Operations</b>		
<b>Stages</b>	<b>Action</b>	<b>Arboricultural Input</b>
<b>1 Approval</b>	This AMS is submitted to and approved in writing by the LPA.	If necessary, liaise with contractor and LPA to discuss methodologies detailed.
<b>2 Tree Works</b>	Tree removals and pruning works shall be carried out as the first operation on site, in accordance with Appendix 3 and as detailed in section 3.1.	Review the tree work requirements with the tree contractor. If necessary, liaise with the contractor on site during tree works.
<b>3 Tree Protection</b>	Installation of the tree protection measures will take place as shown at Appendix 4, prior to any storage of plant, materials and machinery.	If necessary, liaise with the contractor installing the tree protection measures until completed to the standard specified in this method statement.
<b>4 Site Meeting</b>	Following installation of tree protection measures, the LPA shall be invited to inspect the fencing and discuss any other site operations that have implications for trees.	Meeting with a representative of the LPA and the site manager. Alternatively, contractor can confirm the protection measures, and tree works are as specified by taking photographs.
<b>5 Construction</b>	Undertake the construction of the new development.	If necessary, liaise with the local authority and the site foreman to ensure any issues are adequately resolved.
<b>6 Site Finishing</b>	Removal of tree protection fencing must only be undertaken when all site traffic and machinery has left the site. Undertake associated landscaping within RPAs.	If acceptable to the LPA, the contractor can take photographs of the site to give to the LPA to gain approval for the removal of the tree protection fencing.

## 3. Tree Management

### 3.1 Tree Works

- 3.1.1 Poplars T1, T2 and T3 and Beech T8 require removal to facilitate the development.
- 3.1.2 G5: Partial removal and pruning works required to G5 to facilitate the development. Partially remove a small section G5 to facilitate the new access, and prune G5 back to the boundary as required to provide adequate clearance for the development. Do not prune beyond the boundary.
- 3.1.3 2 trees require removal regardless of their development due to their poor condition and significantly limited prospects – T6 and T7.
- 3.1.4 All tree work must be carried out according to British Standard 3998:2010 Tree Work - Recommendations.
- 3.1.5 When appointing a tree surgeon, only properly qualified and experienced companies should be used, who have adequate Public Liability and Employer's Liability Insurance.

## 4. Tree Protection

### 4.1 Tree Protection Fencing

- 4.1.1 The tree protection fencing for this site should be located as shown on the Tree Protection Plan at Appendix 4 (as illustrated with a thick purple line).
- 4.1.2 The tree protection fencing will be appropriate to the degree and proximity of likely construction works. In this instance, due to the ground conditions an adequate level of protection for the trees could be provided by secured 'Heras' type fencing, of welded mesh panels on rubber or concrete feet (see Figures at Appendix 1 for examples).
- 4.1.3 The precise fencing location may need to be slightly adjusted on site due to local site conditions but is not expected to differ from that shown on the Tree Protection Plan. The final fencing position must be agreed

on by the LPA before the commencement of any site works.

- 4.1.4 The tree protection fencing details should be incorporated into relevant subsequent plans, method statements used for design purposes and construction drawings issued for use on site, to ensure that all interested parties are fully aware of the areas in which access and works may and may not take place.
- 4.1.5 The fencing should be joined together using a minimum of two anti-tamper couplers, installed so that they can only be removed from inside the fence (see Appendix 1 for an example). The fencing panels should be supported on the inner side by stabilizer struts, which should normally be attached to a base plate secured with ground pins or mounted on a block tray (see Appendix 1 for an example).
- 4.1.6 The area enclosed by the fencing is referred to as the Construction Exclusion Zone (CEZ); this area should be considered a restricted area. No pedestrians, vehicles, storage of materials, equipment or machinery should be allowed within the CEZ unless specified in this method statement. The site manager must ensure that all personnel are aware of the restrictions that apply to the fenced-off area.
- 4.1.7 Once the fencing is erected, waterproof warning signs labelled 'Tree Protection Area' should be placed at 3m intervals to ensure that all personnel are aware of the restrictions that apply to the fenced-off area (see at Appendix 1 for example signs).
- 4.1.8 The tree protection fencing should be inspected for faults or damage by the site manager or other responsible named person on a regular basis and a written record kept. Any faults or defects should be repaired or replaced as soon as is reasonably practicable. The Tree Protection Fencing shall not be removed, breached or altered without prior written authorisation from the local planning authority and under arboricultural supervision by a suitable named responsible individual appointed by the site manager.

## **5. Works Close To Retained Trees**

### **5.1 Drainage and Utilities**

- 5.1.1 New drainage and underground utilities are to be positioned outside of the RPAs of retained trees, and above ground utilities will be routed away from areas where they are likely to interfere with the retained trees' crowns.
- 5.1.2 NJUG 10: Guidelines for the Planning, Installation and Maintenance of Utility Services in Proximity to Trees should be considered when installing services.

### **5.2 Additional Precautions**

- 5.2.1 Allowance should be made for operations outside of the CEZ that could indirectly impact on trees. Including space for site huts, temporary toilet facilities (including their drainage) and other temporary structures; and space for storing (whether temporary or long-term) materials.
- 5.2.2 Care must be taken to prevent contamination with chemical spillages, including petrol, diesel and oils. Cement mixers and any other toxic materials should not be permitted within the RPA of the trees. Any materials whose accidental spillage would cause damage to a tree should be stored and handled well away from the outer edge of its RPA.
- 5.2.3 Fires on the site should be avoided if possible. Where they are unavoidable, and approved by the Local environmental health authority, they should not be lit in a position where heat could affect foliage or branches. The potential size of a fire and the wind direction should be considered when determining its location, and it should be attended always until safe enough to leave.

### **5.3 Post Construction Landscaping**

- 5.3.1 Many of the trees on site may be subject to some form of landscaping or seeding beneath their canopies after the development phase. At this stage the protective fencing will have been removed and the property may be occupied.

- 5.3.2 Landscaping works should be carried out in such a way as to avoid ground level changes or deep digging. Tractor mounted rotovation or other mechanised cultivation methods must not be used.
- 5.3.3 No heavy machinery should be brought into the vicinity of retained trees.
- 5.3.4 Herbicides should be appropriate for the purpose and should not be used in such a way as to damage any retained trees or vegetation.

## 6. Signature

I trust this report provides all the required information.

Signed



.....

**Adam Winson**  
*Chartered Arboriculturist, MSc, BSc (Hons), MICFor, AIEEM*

**30<sup>th</sup> January 2025**

**AWA Tree Consultants Limited**  
**Union Forge**  
**27 Mowbray Street**  
**Sheffield**  
**S3 8EN**

[www.awatrees.com](http://www.awatrees.com)

## Appendix 1: Images and Figures

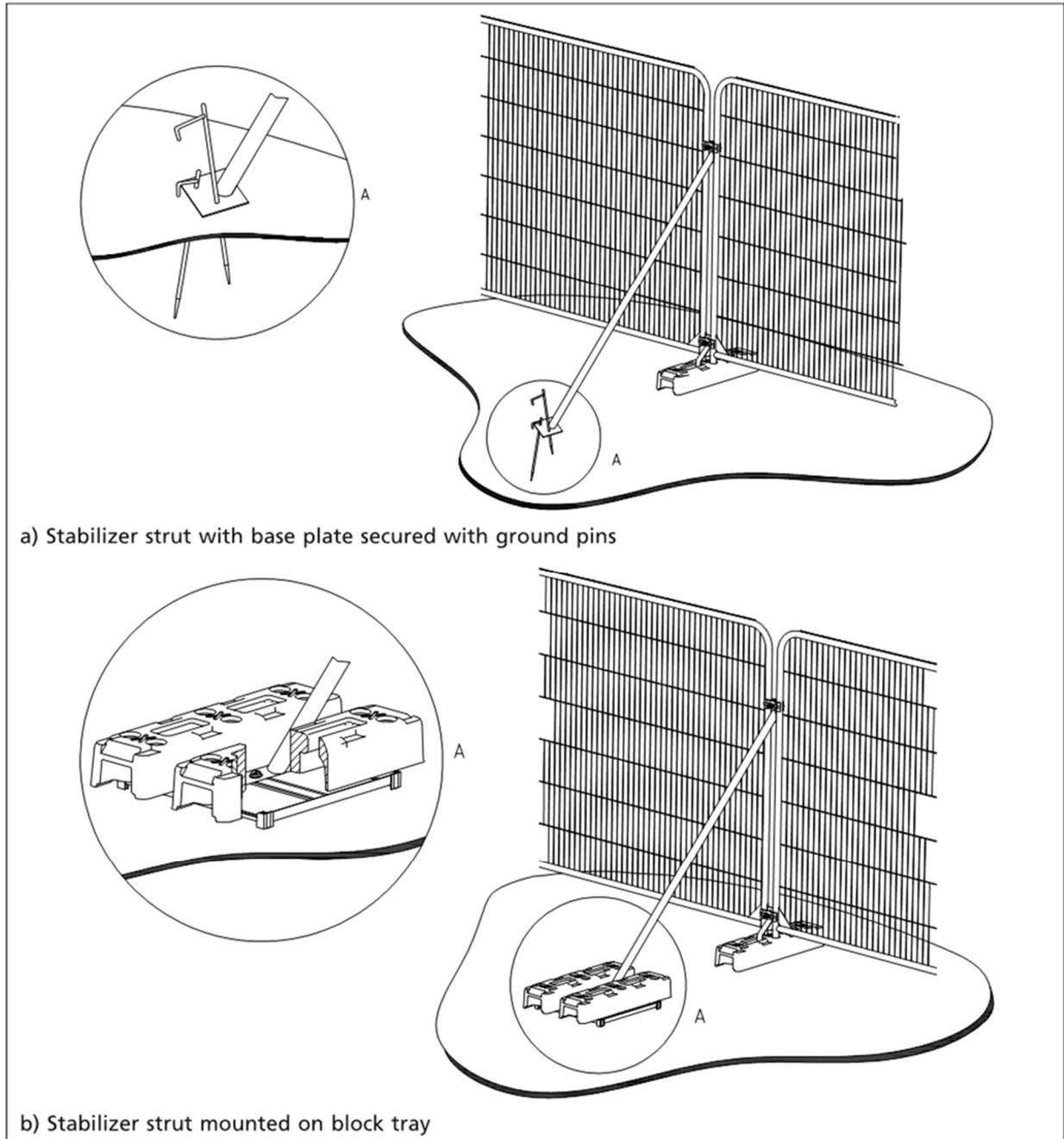


Figure 1: Secured 'Heras' type fencing with stabilizing system and fixed central pins (©BSI)



Figure 2: Secured 'Heras' type fencing with stabilizing system and anti-tamper couplers



Figure 3: Anti-tamper couplers to secure fencing and avoid unauthorised access



Figure 4: Warning sign for fencing



Figure 5: Example of A3 correx tree protection warning sign fixed to fencing panel

## Appendix 2: Relevant Contact Details

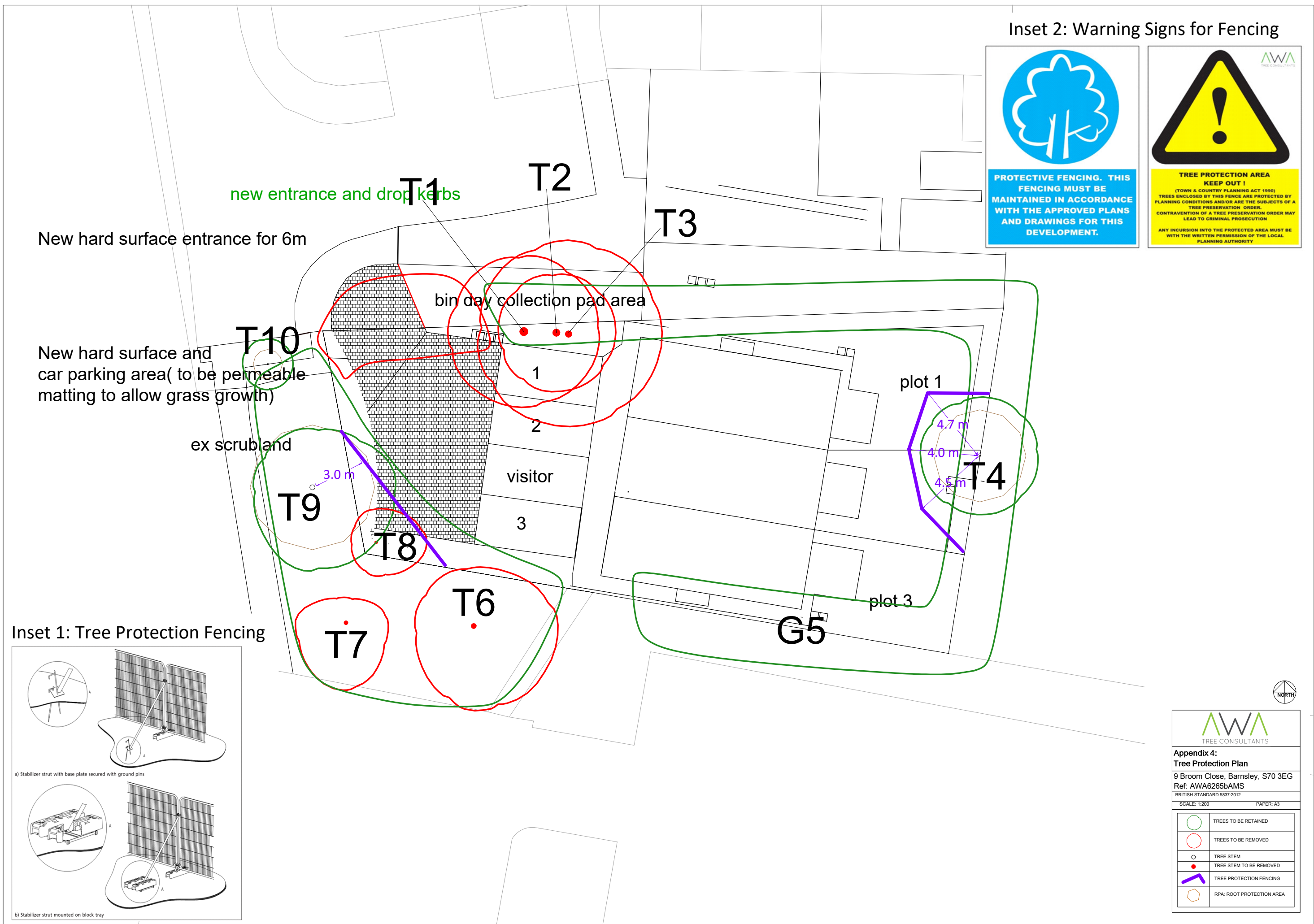
Contact Name	Organisation/ Details	Contact Number	Contact E-mail
Jason Kirk	JK Planning and Design Service Ltd		jkplanningdesignservice@gmail.com
Adam Winson	AWA Tree Consultants Ltd	0114 272 1124	adam@awatrees.com
Edward Jowett	Barnsley Tree Officer Development Management	01226 772557	EdwardJowett@barnsley.gov.uk

Tree ID	Tree Species		Maturity	Measurements				Crown (m)				Tree Condition				Physiological	Structural	Life Expectancy	Value		Management	
	Common Name	Latin Name		Height (m)	Stems	Stem Diameter (mm)	Estimated	Crown height	N	E	S	W	Roots	Stem	Crown				Comments	Amenity	Category	Works
T1	Poplar	<i>Populus sp.</i>	Early-mature	18	1	500	Yes	4	4.5	4.5	4.5	4.5	Limited access around base. Decay	Single stemmed. Vertical. Epicormic growths. Old pruning wounds. Tight union. Partially included bark	Old pruning wounds. Minor dieback. Minor deadwood. Cavities	Large Poplar situated within planting border. Twin stemmed at approx 3m. Some decayed stubs at base.	Fair	Fair	20 to 40 yrs	Moderate	C	Removal required to facilitate the development.
T2	Poplar	<i>Populus sp.</i>	Early-mature	18	1	450	Yes	4	3.5	3.5	3.5	3.5	Limited access around base.	Single stemmed. Vertical. Epicormic growths. Heavily ivy covered. Old pruning wounds. Tight union. Partially included bark	Old pruning wounds. Minor dieback. Minor deadwood. Cavities	Heavily ivy covered.	Fair	Fair	20 to 40 yrs	Moderate	C	Removal required to facilitate the development.
T3	Poplar	<i>Populus sp.</i>	Early-mature	18	1	400	Yes	4	5.5	5.5	5.5	5.5	Limited access around base.	Single stemmed. Vertical. Epicormic growths. Old pruning wounds. Tight union. Partially included bark	Old pruning wounds. Minor dieback. Minor deadwood. Cavities	Plank of wood nailed to stem. Electric works approx 2.5m from T3 with some roots exposed.	Fair	Fair	20 to 40 yrs	Moderate	C	Removal required to facilitate the development.
T4	Willow	<i>Salix sp.</i>	Semi-mature	6	10+	70 avg.	Yes	2	3.5	3.5	3.5	3.5	Limited access around base	Multiple stemmed at base. Vertical	Normal	Situated within group.	Fair	Good	>40 yrs	Low	C	No works required.

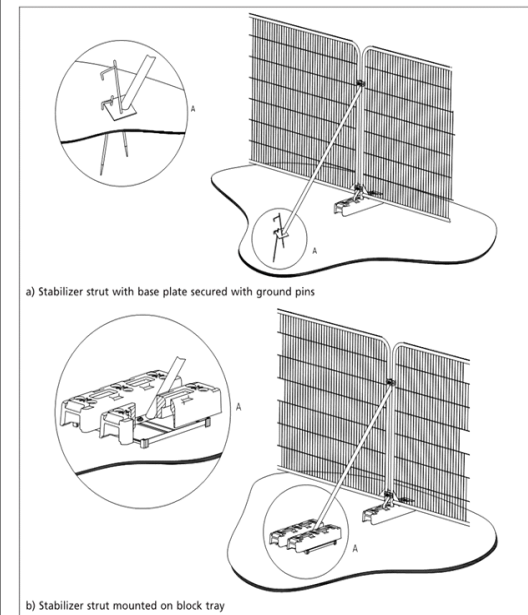
Tree ID	Tree Species		Maturity	Measurements				Crown (m)				Tree Condition				Physiological	Structural	Life Expectancy	Value		Management	
	Common Name	Latin Name		Height (m)	Stems	Stem Diameter (mm)	Estimated	Crown height	N	E	S	W	Roots	Stem	Crown				Comments	Amenity	Category	Works
G5	Beech, Elder and Holly	<i>Fagus sylvatica</i> , <i>Sambucus nigra</i> , <i>Ilex aquifolium</i>	Semi-mature	2	10+	70 avg.	Yes	0	See plans.				Limited access around base	Multiple stemmed at base. Vertical	Normal	Mixed species hedgerow which wraps around site and provides decent screening.	Fair	Good	>40 yrs	Low	C	Partial removal required to facilitate the development. Pruning works required to facilitate the development - prune back to the boundary as required to provide adequate clearance for the development. Do not prune beyond the boundary.
T6	Silver Birch	<i>Betula pendula</i>	Early-mature	8	1	300	Yes	3	3.5	5	5	3.5	Limited access around base	Single stemmed. Vertical. Old pruning wounds. Epicormic growths	Old pruning wounds	Moderate fire damage at the base leaving cavities and decay.	Poor	Fair	< 10 yrs	Moderate	U	Removal recommended regardless of any development on site.
T7	Silver Birch	<i>Betula pendula</i>	Semi-mature	5	1	230	Yes	1.5	1.5	2.5	4	3	Limited access around base	Single stemmed. Slight lean. Old pruning wounds	Old pruning wounds. Moderate dieback. Minor deadwood	Moderate dieback in crown. Leaning south. Minor fire damage at base.	Poor	Fair	< 10 yrs	Low	U	Removal recommended regardless of any development on site.
T8	Beech	<i>Fagus sylvatica</i>	Semi-mature	6	2	100, 150	Yes	2.5	2	3	2	1.5	Limited access around base	Twin stemmed at 1m. Vertical	Normal		Good	Good	>40 yrs	Low	C	No works required.
T9	Silver Birch	<i>Betula pendula</i>	Early-mature	8	1	300	Yes	3	3.5	5	5	3.5	Limited access around base	Single stemmed. Vertical. Old pruning wounds. Epicormic growths	Old pruning wounds		Good	Good	>40 yrs	Moderate	C	No works required.

Tree Species		Measurements						Crown (m)				Tree Condition						Value		Management		
Tree ID	Common Name	Latin Name	Maturity	Height (m)	Stems	Stem Diameter (mm)	Estimated	Crown height	N	E	S	W	Roots	Stem	Crown	Comments	Physiological	Structural	Life Expectancy	Amenity	Category	Works
	T10	Silver Birch	<i>Betula pendula</i>	Semi-mature	3	1	70	Yes	1.5	1.5	1.5	1.5	1.5	Limited access around base	Single stemmed. Vertical. Old pruning wounds. Epicormic growths	Old pruning wounds		Fair	Fair	>40 yrs	Low	C

Inset 2: Warning Signs for Fencing



Inset 1: Tree Protection Fencing



NORTH

**AWA**  
TREE CONSULTANTS

**Appendix 4:**  
**Tree Protection Plan**  
9 Broom Close, Barnsley, S70 3EG  
Ref: AWA6265bAMS  
BRITISH STANDARD BS5837:2012

SCALE: 1:200      PAPER: A3

	TREES TO BE RETAINED
	TREES TO BE REMOVED
	TREE STEM
	TREE STEM TO BE REMOVED
	TREE PROTECTION FENCING
	RPA: ROOT PROTECTION AREA