



Worksite: Broom Close, Kendray Barnsley

Customer: BMBC

COPIES HELD BY: EJ Lidster Office

On Site

Customer

**A COPY OF THIS DOCUMENT MUST BE PRESENT ON SITE
AND A FULL DOCUMENTATRY BRIEFING UNDERTAKEN TO ALL ON SITE
PERSONNEL, SUB-CONTRACTORS AND VISITORS
BEFORE ANY CONSTRUCTION ACTIVITY COMMENCES**

	Name, Title	Signature	Date
Prepared by	Anthony Lidster.		15.08.23

Construction Method Statement

1. Contract Company:	2. Order Number
BMBC	N/A
3. Exact location of the Work: Broom Close kendray, Barnsley	



4. Work to be Undertaken:

Demolition and clearance of former caretaker's house.

5. Duration of Work

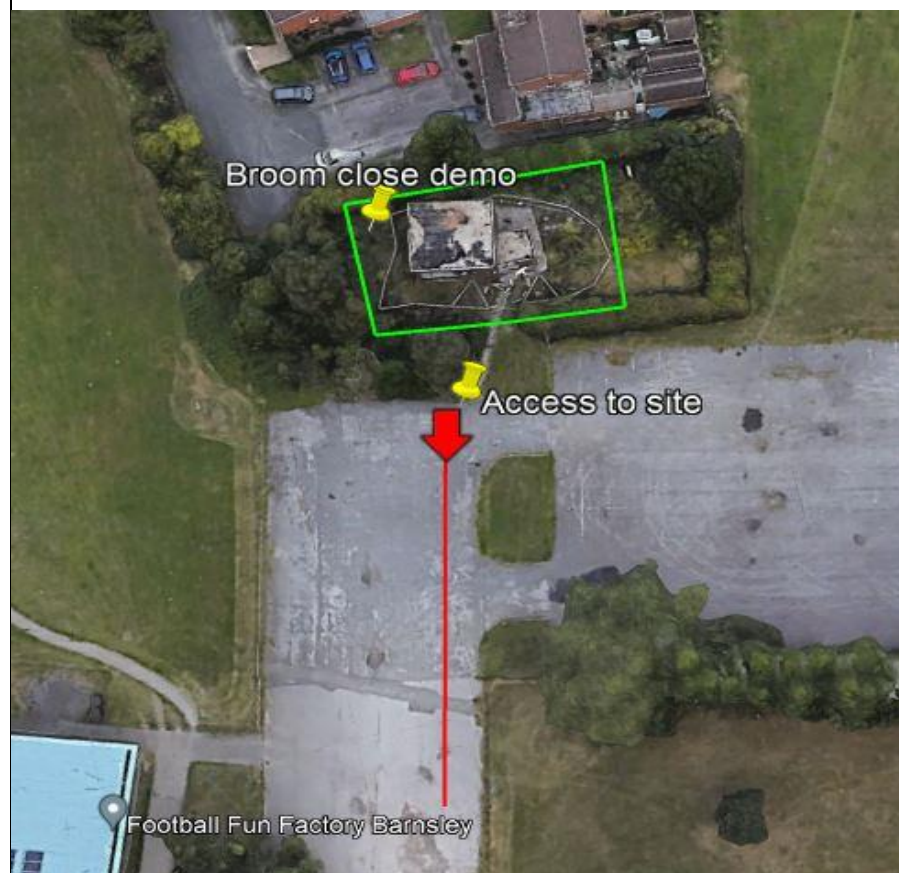
Anticipated start date	Anticipated end date
TBC	TBC

15 working days

6. Completion Criteria – States how the worksite will be left

Daily	Upon Completion of Works	Handover Arrangements
To sign in and out of site with the Site Supervisor	Site cleared to customer satisfaction	Inform customer upon completion

Access And Egress



7. Access & Egress - To and from the normal place of work. This **MUST** be specific as all other areas become prohibited.

Access onto site Via B6100 hunningley lane.

Access in to the property via the tarmac driveway.

Traffic will be managed into site with an appointed banks man.

Road sweeper on standby.

8. Assembly Point - Not Ambulance Meeting Point. Indicate egress to the Assembly Point in the event of an emergency.

Carpark in front of building

9. Emergency Contact: (24 hour): Name Anthony Lidster Tel No 07767 880800					
10. First Aid Arrangements: First Aid Kits and Eye Wash Bottles available on site					
11. Welfare – welfare unit					
12. Accident/Incident Reporting: All accidents and Incidents must be reported to Lidsters Main Office as soon as possible.					
13. Technical Content of Work					
<ol style="list-style-type: none"> 1. Confirmation from client that all services isolated. 2. Prior to establishment of site all Asbestos, identified by type 3 survey to be removed. 3. Protect trees to remain with suitable fence and signs 4. Soft strip of internal fixtures. 5. Walls demolished by way of 360 Excavator under banks man supervision. 6. Materials separated mechanically by 360 excavators with waste handler. 7. Material loaded into 8-wheel tipping wagons / roll on off skips and sent to licenced tipping facility. 8. Building foundations removed ready for new build. 9. Site left level and tidy in line with specification. <p>NB – Detailed Demolition Plan in Appendix B</p>					
14. Site Specific Risks			Risk Assessment		
	YES	NO	Hazard	Risk	Control Measures
Gas	Y		Presence of Domestic Gas	Explosion	Confirmation of supply being disconnected from the building and pipework purged and certified clear Back to mains stop tap and protected, no digging below ground level so no contact with services.
Electricity	Y		Live current	Electrocution Explosion Fire	Electric supply to be disconnected prior to commencement
Water	Y		Supply interruption	Flooding Waste	To be disconnected
Movement of Plant & Machinery	Y		Man / Machine Interface	Strike with Machine	Banks man appointed
Effects of Work on Public Areas	Y		Moving Plant & Machinery Noise, Dust	Contact, Strike, Pollution	Worksite access point to be locked off preventing access when site

					Unattended. Signs and notices to be posted
Traffic Management	Y		Public Interface Mud on road	Nuisance Collision	Banks man appointed Sweeper to be used as needed
Waste Disposal	Y		Waste material	Pollution Contamination	Appropriate disposal arrangements to licensed tip
Working at Height	Y		Person falling Falling objects	Death, Serious Injury	All work at heights to be undertaken from scaffold platform fitted with hand rails and toe boards or from Mobile Elevated Working Platform

Generic Hazards and associated Risks Assessed included at Appendix A

USING PLANT AND EQUIPMENT

EXCAVATOR 360	15
HAND TOOLS (none electrical)	17

LOADING/UNLOADING LOW LOADER	22 B
------------------------------	------

SPECIALIST TASKS

DEMOLITION (soft strip)	23
DEMOLITION (structural)	24

GENERAL

FIRE PRECAUTIONS (site in general)	26
PROTECTION OF PUBLIC/OPERATIVES (on site)	29
SITE MOBILE PLANT/TRAFFIC (general)	30
UNDERGROUND SERVICES	31
WORKING AT HEIGHT	32
REMOVAL FIBRE CEMENT ROOF SHEETS	AD32A
REMOVAL STEEL STRUCTURE	AD32C

15. Plant / Equipment:

To be used	Details	Competent Operator
22ton 360 excavator with grab		CITB/ competent
8 wheeled tipper lorry		HGV Driving Licence
Transit tipper		Driving License

16. Personal Protective Equipment to be used:

Hard Hats	Yes – Mandatory
Safety Footwear	Yes - Mandatory
Hi-visibility vest	Yes – Mandatory
Ear Defenders	Yes – Mandatory where signs fitted
Gloves	Yes – As dictated by PPE/Task assessment
Safety Glasses	Yes – As dictated by PPE/Task assessment

17. Hazardous Substances:

COSHH Assessments will be available on site for the following hazardous substances:

Diesel
Oil
Petrol

18. Subcontractors to be used:

All must be approved by Lidsters and have their own Method Statement

N/A

19. Environmental Protection Arrangements

Hazard	Risk	Control
Noise & Vibration	Disturbance to residence	Noise to be kept to a minimum
Lighting	None	Day shifts only
Traffic Disruption	To local residents & business	Banksman used to reverse onto site
Pollution	Emissions from Plant	Engines to be switched off when not in use
Landscape	Disturbed ground	To be levelled upon completion
Waste	Inadequate disposal	Disposed of to licensed tip
Protected Species	None	
Archaeology	None	
Tree Preservation Orders	None	



Method Statement Briefing Form

Location of Brief	Caretakers house broom close
Name of Briefer	Garry Clarke
Signature of Briefer	

To ensure that EJ Lidster Construction are able to maintain auditable records of attendance of safety briefings you are required to sign below as proof of attendance and understanding of details briefed.

Name	Date	Depot / Site	Signature



APPENDIX A: GENERIC RISK ASSESSMENTS

GENERIC RISK ASSESSMENT INDEX

WORK ACTIVITY	REF
USING PLANT AND EQUIPMENT	
EXCAVATOR 360	15
HAND TOOLS (none electrical)	17
MEP's (Mobile Elevated Platforms)	20
LOADING/UNLOADING LOW LOADER	22 B
SPECIALIST TASKS	
DEMOLITION (soft strip)	23
DEMOLITION (structural)	24
GENERAL	
FIRE PRECAUTIONS (site in general)	26
PROTECTION OF PUBLIC/OPERATIVES (on site)	29
SITE MOBILE PLANT/TRAFFIC (general)	30
UNDERGROUND SERVICES	31
WORKING AT HEIGHT	32



E J LIDSTER SALES LTD
GENERAL RISK ASSESSMENT

REF 15

ACTIVITY
EXCAVATOR (360 tracked)
HAZARDS
Ground conditions, poorly maintained, to feet, head, hands, overloading overhead electric cables, underground services, to third parties/pedestrians in vicinity of operations, collapse of boom, refuelling (COSHH).
PEOPLE EXPOSED
Operator and anyone on site.
ACTION/CONTROLS TO REDUCE RISK
<p>Only trained and competent drivers to operate machine (CITB licence holder or similar).</p> <p>Machine to be maintained in good repair including the correct retaining clips fitted to buckets and safety devices fitted and working on quick release buckets.</p> <p>Mirrors to be fitted around machine including to rear to aid all round vision.</p> <p>Not to be operated within the vicinity of overhead cables.</p> <p>Operator to be warned of services not to dig within 500mm of underground services.</p> <p>Weekly inspection of machine to be carried out and results logged.</p> <p>Care to be taken when working in the vicinity of excavations.</p> <p>To be guided by banksman in tight areas.</p> <p>Safe working load (SWL) to be marked on machine, not to be exceeded.</p> <p>Check valves to be fitted.</p> <p>Lifting gear only to be attached to tested lifting eyes.</p>
PERSONAL PROTECTIVE EQUIPMENT
Safety boots and high viz vest/jacket, helmet to be worn outside machine, gloves to be used for refuelling.
TRAINING
Operator to hold CITB licence or similar, and advised of COSHH requirements for diesel.
ASSESSMENT REVIEW
To be reviewed from time to time.



E J LIDSTER SALES LTD
GENERAL RISK ASSESSMENT

REF 17

ACTIVITY
HAND TOOLS (none electrical)
HAZARDS
Flying particles, electric shock to hands, feet, eyes and/or body.
PEOPLE EXPOSED
Operative primarily.
ACTION/CONTROLS TO REDUCE RISK
<p>Tools provided must be in good repair, be maintained in good repair and be suitable for the purpose for which they are to be used.</p> <p>Eye protection to be provided and used when working with cold chisels, manual drills or other tools where there is a risk of flying particles or pieces of tool breaking off.</p> <p>Open bladed knives, screwdrivers and other sharp tools to be carried and used so as not to cause injury to the user or others.</p> <p>Non ferrous (spark free) tools are to be used in flammable atmospheres.</p> <p>Insulated tools must be used where there is a possibility of live electrical work.</p> <p>Tools to be regularly checked to ensure they remain in good condition.</p>
PERSONAL PROTECTIVE EQUIPMENT
Helmets and safety boots to be worn, gloves may be necessary and as per site rules.
TRAINING
All operatives to be instructed in the correct method of use and maintenance requirements.
ASSESSMENT REVIEW
To be reviewed from time to time and revised as necessary.



E J LIDSTER SALES LTD
GENERAL RISK ASSESSMENT

REF 20

ACTIVITY
MOBILE ELEVATED PLATFORMS (MEP) (using)
HAZARDS
Overturning, fall from platform, fall of materials, electric shock.
PEOPLE EXPOSED
Operator and people in and around.
ACTION/CONTROLS TO REDUCE RISK
<p>Only to be operated by a trained and competent person holding relevant certificate of training/competence.</p> <p>Platform must be maintained in good repair at all times/to be inspected daily before use.</p> <p>Ensure no overhead lines are present in work area.</p> <p>Ensure the wind speed is not excessive.</p> <p>Ground conditions must be suitable and stable and where necessary outriggers and stabilisers must be safely deployed.</p> <p>Safe working load not to be exceeded.</p> <p>Signs and barriers to be erected to prevent access under the working area.</p> <p>Work to be carried out within the specified reach of the unit used.</p> <p>All tools and equipment to be secure from falling.</p> <p>Operatives not to overstretch/reach from platform.</p>
PERSONAL PROTECTIVE EQUIPMENT
As per site rules, safety helmets and safety boots to be worn. In most cases harnesses to be worn by all using platform.
TRAINING
Only trained operatives to use Mobile Elevated Platforms.
ASSESSMENT REVIEW
To be reviewed on site to ensure assessment covers all site conditions.



E J LIDSTER SALES LTD
GENERAL RISK ASSESSMENT

REF 22 B

ACTIVITY
PLANT: loading/unloading hiab lorry – lifting
HAZARDS
Uneven/soft ground conditions, adverse weather, overhead cables, untrained operatives, poorly maintained machines, overloading, communication problems, materials falling, collapse/failure of crane, incorrect capacity of crane
PEOPLE EXPOSED
Operative and anyone in the vicinity of operations.
ACTION/CONTROLS TO REDUCE RISK
Machine selected by competent operator Emergency evacuation procedure/rescue procedure in place Operator/slinger to maintain position of safety at all times – out with the reach of the load Only tested lifting gear to be used Test/inspection documents to be checked to ensure they are up to date Ground/base to be suitable for stability of crane- avoiding services/manholes Lifting plant to be provided Work within the Safe Working Loads of the equipment Load to be positioned and strapped onto lorry before lifting chains removed Only trained banksman/slinger to attach loads Adequate visibility/signalling arrangements to be made Third parties controlled/kept out of area
PERSONAL PROTECTIVE EQUIPMENT
Helmets, hi-visibility vests and safety boots to be worn by all operatives in the vicinity of operations, gloves may be necessary for slinger, eye protection where necessary
TRAINING
Banksman/slinger and crane operator to be trained and competent and advised of any site hazards e.g. overhead services
ASSESSMENT REVIEW
To be reviewed by Operator at each location prior to load/unload



E J LIDSTER SALES LTD
GENERAL RISK ASSESSMENT

REF 23

<p>ACTIVITY</p> <p>DEMOLITION: Soft, non-structural, partitions, ceilings, cladding, plaster etc.</p>
<p>HAZARDS</p> <p>Site activity and conditions, access, dust, services, manual handling, noise, head, feet, electric shock, vibration. (If asbestos found separate assessment to be carried out).</p>
<p>PEOPLE EXPOSED</p> <p>Operatives primarily, persons in the vicinity.</p>
<p>ACTION/CONTROLS TO REDUCE RISK</p> <p>Survey to be carried out before any work undertaken to ensure services are identified and cut off/isolated, that walls etc., to be removed are non-structural and to ensure there is no asbestos present.</p> <p>Work plan/method statement required before work starts.</p> <p>Waste to be removed with the use of mechanical aids whenever possible (chutes, trolleys, hoists etc).</p> <p>Only 110v electrical tools to be used.</p> <p>Tools to be carefully selected to reduce noise, vibration etc.</p> <p>Platforms/access to comply with same requirements as on construction job.</p> <p>Work area to be sectioned off to prevent persons not carrying out work from gaining access to work area.</p>
<p>PERSONAL PROTECTIVE EQUIPMENT</p> <p>Helmets and safety boots to be worn at all times, ear protection, dust masks, goggles, gloves to be provided as outlined in method statement.</p>
<p>TRAINING</p> <p>All operatives to receive training in good working practices as outlined in method statement. Kinetic handling training may be required.</p>
<p>ASSESSMENT REVIEW</p> <p>Assessment to be reviewed before any work of this nature takes place.</p>



E J LIDSTER SALES LTD
GENERAL RISK ASSESSMENT

REF 24

ACTIVITY
DEMOLITION of structures.
HAZARDS
Site activity and conditions, access, collapse of structures, dust, exposure to services, manual handling, noise, vibration, machinery, structure stability (pre-stressed concrete) head and feet.
PEOPLE EXPOSED
Operatives and people in vicinity including adjacent premises.
ACTION/CONTROLS TO REDUCE RISK
<p>On site survey to be undertaken to enable an accurate understanding past features and present condition prior to any demolition, characterising type of structure, condition, need for temporary support, confined spaces, overhead services, hazards such as asbestos, lead paint or steelwork or other toxic residues.</p> <p>Protection of public, site enclose/fence off, danger notices to display, provision of banks man to exclude passers-by away from potential danger areas when working near boundaries. Exclusion zones to be discussed and set to prevent danger.</p> <p>Minimise working at heights, consider means of access, equipment, pre-weakening of structure.</p> <p>Removal of services, method for dealing with toxic/flammable residues, waste transport and disposal, safety co-ordination.</p> <p>Minimise noise by selection of plant and equipment.</p> <p>Only to be undertaken by competent contractor. (To be checked out at tender stage).</p> <p>Method statement must be drafted and checked before work starts.</p>
PERSONAL PROTECTIVE EQUIPMENT
Helmets and safety boots must be worn at all times. Dust masks may be required, gloves and ear defenders. Safety harnesses may be required in certain instances. If lead or asbestos present, specific risk assessment required to decide on requirements.
TRAINING
Supervisors must be trained and competent to carry out demolition work. Operatives to receive training in good working practices and kinetic handling.
ASSESSMENT REVIEW
To be reviewed prior to all demolition work and revised where necessary.



E J LIDSTER SALES LTD
GENERAL RISK ASSESSMENT

REF 26

ACTIVITY
General site activities "FIRE"
HAZARDS
Fire, smoke.
PEOPLE EXPOSED
Operatives and visitors to site, may include occupants of partially completed flats/houses.
ACTION/CONTROLS TO REDUCE RISK
<p>Firefighting equipment to be available on all sites for:</p> <ul style="list-style-type: none"> a) Accommodation on site. b) Hot work being carried out. c) Inside multi storey blocks of flats. <p>Alarm system to be established on multi storey blocks of flats. Manual bell/air horn or similar.</p> <p>Smoke alarms to be fitted to welfare cabins.</p> <p>Procedure to be established for raising alarm and posted out on site.</p> <p>Operatives, visitors to be advised of assembly point location.</p> <p>Extra precautions to be taken during works in partially occupied flats e.g. no smoking, double checks after hot work etc.</p> <p>Permit to work system to be established for hot works.</p> <p>Fire escape routes to be provided in flats during construction and marked as such.</p> <p>Flammable materials not to be allowed to accumulate (tidy up regularly as work progresses).</p>
PERSONAL PROTECTIVE EQUIPMENT
As per site rules.
TRAINING
All operatives on site to be advised of site rules, position of fire extinguishers, assembly point and instructed as to what the fire warning system is.
ASSESSMENT REVIEW
To be reviewed from site to site.



E J LIDSTER SALES LTD
GENERAL RISK ASSESSMENT

REF 29

ACTIVITY
PROTECTION OF PUBLIC/OPERATIVES (on site)
HAZARDS
Site activities, plant, access to scaffolds, under scaffolds, stored materials, excavations, open manholes, BT boxes etc.
PEOPLE EXPOSED
Operatives, general public and children.
ACTION/CONTROLS TO REDUCE RISK
<p>Permanent perimeter fencing to be installed at an early stage.</p> <p>Construction area to be fenced off with heras fencing to protect public as necessary, work adjacent to boundaries to be checked for potential dangers to the public, banks man provided as necessary to exclude pedestrians from danger areas.</p> <p>Signs to be erected on fencing i.e. Danger, Keep Out.</p> <p>Signing in procedure and induction training to be carried out on all sites.</p> <p>Excavations to be fenced off or fully back filled.</p> <p>Incomplete scaffold signs to be displayed where necessary.</p> <p>Ladders to be removed from scaffolds at end of shift.</p> <p>Manholes, BT boxes etc., to be securely covered at all times.</p> <p>Materials to be safely stacked.</p> <p>Sites to be kept in good order.</p> <p>Security guards to be considered.</p> <p>Contact local schools.</p>
PERSONAL PROTECTIVE EQUIPMENT
Safety boots/shoes, high viz vests/jackets and helmets to be worn by all entering the build area.
TRAINING
All operatives to receive induction training.
ASSESSMENT REVIEW
To be reviewed from site to site.



E J LIDSTER SALES LTD
GENERAL RISK ASSESSMENT

REF 30

ACTIVITY
SITE TRANSPORT
HAZARDS
Injury to persons on site
PEOPLE EXPOSED
Site operatives, general public, children
ACTION/CONTROLS TO REDUCE RISK
<p>Traffic management plan to be set up and displayed on site.</p> <p>Pedestrians to be protected from plant and equipment.</p> <p>Compound to be set up to keep vehicles and pedestrian routes separate.</p> <p>Separate access to be provided to compound for pedestrians.</p> <p>One way system to be established wherever possible.</p> <p>Speed humps to be considered.</p> <p>Speed of vehicles to be restricted (signs).</p> <p>Plant warning signs to display.</p> <p>Reversing delivery vehicles to be guided by banks man.</p> <p>F/lifts and mobile plant to be fitted with reversing warning systems.</p> <p>Plant to be effectively immobilised at the end of shift, lock machine where possible.</p> <p>Remove keys when machine left unattended.</p> <p>All excavators and f/lifts to be fitted with sufficient rear view mirrors, kept in good repair, to aid reversing manoeuvres.</p> <p>Where mirrors are not deemed to be sufficient then plant must be fitted with a rear view camera e.g. large dump trucks.</p> <p>Windscreens, side screens and rear screens to be regularly cleaned to allow for good vision.</p>
PERSONAL PROTECTIVE EQUIPMENT
Reflective coats/waistcoats to be worn by banks men/operatives working with plant.
TRAINING
Induction training to be carried out as necessary.
ASSESSMENT REVIEW
To be reviewed from site to site.



E J LIDSTER SALES LTD
GENERAL RISK ASSESSMENT

REF 31

ACTIVITY
UNDERGROUND SERVICES (working in vicinity)
HAZARDS
Electric shock, explosion, fire, burns.
PEOPLE EXPOSED
Operatives carrying out works.
ACTION/CONTROLS TO REDUCE RISK
Excavations to be placed under supervision of competent person. Service drawing to be provided/checked before any digging on site. Cable locator to be used to check area. No excavators to be used within 500mm of service positions. Operatives carrying out hand digging to be fully clothed (natural fibre clothing), to guard against burns.
PERSONAL PROTECTIVE EQUIPMENT
Helmets, safety boots and reflective w/coats to be worn at all times. Ear protection and goggles may be required during certain processes/activities.
TRAINING
All operatives to be advised of known service locations.
ASSESSMENT REVIEW
To be reviewed from site to site.



E J LIDSTER SALES LTD
GENERAL RISK ASSESSMENT

REF 32

ACTIVITY
Working at height
HAZARDS
Fall of persons, materials.
PEOPLE EXPOSED
Operatives working at height, operatives working below, members of the public.
ACTION/CONTROLS TO REDUCE RISK
Safe means of access to the work place using ladders, scaffold, mobile towers, mobile platforms etc. Edge protection to be provided to all openings, edges where persons may fall from height. Harnesses to be used where edge protection is not practical. Area below to be fenced off or banks man provided. Signs to display (men working overhead). Redundant materials should be cleared away without delay, but not thrown from high level (bombing). A debris chute should be used or materials collected and lowered in suitable containers. The fall of materials should be prevented by the use of debris netting, brick guards and fans.
PERSONAL PROTECTIVE EQUIPMENT
Safety boots and helmets to be worn at all times, harnesses and safety lines may be necessary in some instances.
TRAINING
All operatives to be induction trained and advised of control measures.
ASSESSMENT REVIEW
To be reviewed from site to site.



APPENDIX B: DEMOLITION PLAN

Broom Close , Kendray

**SEQUENCE AND METHOD OF DEMOLITION IN ACCORDANCE WITH
BS 6187:2000 "CODE OF PRACTICE FOR DEMOLITION"
5.2.3 PREPERATION OF METHOD STATEMENTS**

DEMOLITION PLAN

STAGE	TASK	ACHIEVED
	Asbestos identified in type 3 survey removed prior to demolition. Confirmation that all Asbestos removed.	
	Services to be disconnected	
	Tree protection fence erected	
	Soft strip carried out on all internal soft furnishing's carpets, timbers, door casings etc. By hand.	
	Take down conservatory	
	Removal from site	
	Loaded into roll on off skips for removal to tip.	
	Buildings to be demolished by used of 360 Excavator with, All demolition to be undertaken under Banks man supervision ensuring safe working.	
	Materials arising from demolition sorted on site. Ready for removal.	
	Materials loaded in to tipper wagons. Materials taken to licensed tipping facility.	
	Site to be cleared of all waste material / foundations removed	
	Site kept in a tidy condition throughout works.	
	Site to be handed back to the Client upon satisfactory completion of all of the above	