

NOTES

GENERAL NOTES :-

ALL LEVELS ARE IN METRES DERIVED FROM GPS TRANSFORMATION.
 GRID COORDINATES ARE ORDNANCE SURVEY NATIONAL GRID DERIVED FROM GPS TRANSFORMATION.
 GPS COORDINATES AND LEVELS SET AT ST01 (NO SCALE FACTOR APPLIED)

THIS DRAWING HAS BEEN PRODUCED WITH A PLOT SCALE ACCURACY OF 1:200

SERVICE COVERS INDICATED WHERE VISIBLE PIPE INVERTS / DETAILS SURVEYED FROM SURFACE INSPECTION ONLY. GENERALLY DAMAGED COVERS AND COVERS WITH HIGHWAYS WILL NOT BE LIFTED

TREE SPECIES SHOULD BE CONFIRMED BY TREE SPECIALIST IF CRITICAL.

OVERHEAD CABLES ARE INDICATED USING REMOTE SURVEY METHODS AND ARE SUBJECT TO SEASONAL VARIATION AND SHOULD BE TREATED AS APPROXIMATE.

THE SURVEYOR WILL NOT BE RESPONSIBLE FOR THE OMISSION OF DETAILS OBSERVED DURING SITE SURVEY

RICS PROFESSIONAL STANDARDS 3RD EDITION RULE 1.19 APPLIES TO THIS SURVEY.

TOPOGRAPHICAL SURVEY/UTILITY KEY :-

(h) = height	o/h = over head
Ø = diameter	of = off set
● = peg trap	osa = off survey area
o/a = above ground	OSBM = ordnance survey bench mark
a/r = assumed route	p & r fence = post & rail fence
av = air valve	pd = pit depth
bb = bellini beacon	pr = pipe riser
bd = back drop	pls = pipe to ground
bl = bed level	pls = pipe to surface
bol = bollard	ra = roading eye
bot = bottom of shaft	ret wall = retaining wall
bt = telecom	rs = road sign
c/b fence = closeboard fence	rep = right water pipe
c/box = control box	s/birch = silver birch
cctv = cable television	s/p = safety paving
cl = cover level	spp = sapping
con = conifer	sec fence = security fence
cr = cable riser	sfc = soil filled chamber
cws = combined water sewer	sl = soil light
d/chan = drainage channel	sp = soil pipe
esp = electric junction box	st = stop top
elec = electric	sv = stop valve
ep = end of trace	swp = soil vent pipe
er = earth rod	sws = storm water sewer
f/b = floor level	TBM = temporary bench mark
fh = fire hydrant	tfr = taken from records
fl = floor level	tl = trench level
fa = fire switch	top = top of pipe
fae = foul water sewer	top = top of tank
g = gully	tp = telecom pole
g/run = gully run	ts = traffic signal
gr = gas riser	u/a = trench scar
h/hednut = horse chestnut	u/s = understep
h/thorn = hawthorn	ut = unable to lift
ic = inspection cover	ut = unable to rod
il = invert level	ut = unable to survey
im = illuminated	ut = unable to trace
int = interceptor	vp = vent pipe
ip = lamp post	wfc = water filled chamber
ml = manhole cover	wl = water level
mw = marker	wm = water meter
n/v = no visible pipes	wp = waste pipe
	wr = water riser

SURVEY CONTROL :-

STATION	EASTINGS	NORTHINGS	LEVEL
ST01	436160.841	404484.233	115.467
ST02	436162.154	404496.504	114.382
ST03	436159.862	404467.619	115.593
ST04	436165.420	404503.989	114.58

INDICATIVE NORTH

UTILITY SURVEY KEY :-

	HATCHED AREA		ELECTRIC CABLE
	BOREHOLE		WATER PIPE
	CPT		FOUL SEWER
	HAND PIT		STORM SEWER
	WINDOW SAMPLE		COMBINED SEWER
			DUCTS
			CABLE TELEVISION
			DATA CABLE
			TELECOM CABLE
			GAS PIPE
			UNIDENTIFIED SERVICE
			OTHER
			TRAFFIC LIGHT
			OFFSET FULL
			VENT
			FUEL PIPE
			GAUGE LINES
			PIPE
			ASSUMED ROUTE
			TAKEN FROM RECORDS

DISCLAIMER :-

Electromagnetic techniques have been used in the location of underground services. The results are not infallible and trial excavations should be carried out to confirm service identification, positions and particularly depths, where these are critical. The completeness of the underground services information cannot be guaranteed.

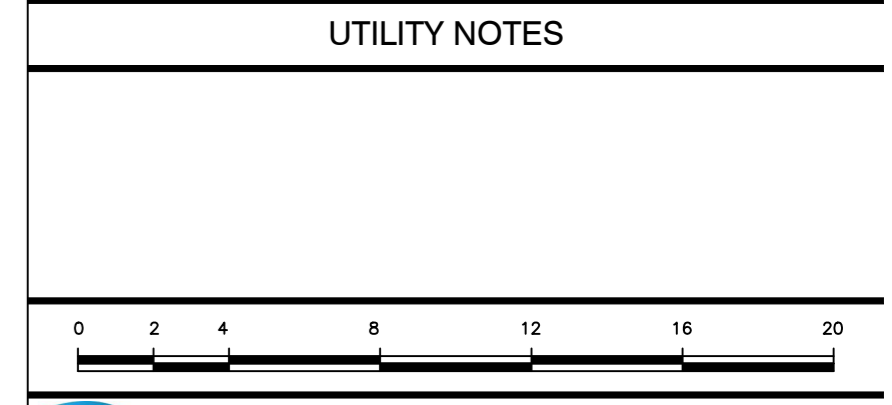
This method of survey does not differentiate between live and dead services, and as such all services should be treated as live. This drawing may not include the location of all public services that may cross the site, therefore the relevant service drawings should be obtained from the appropriate utility company and used in conjunction with this drawing.

Private service pipes and cables in highways are not shown, but their presence should be anticipated.

Additional below ground structures or obstructions not shown on this drawing may be present. Reference should be made to historical plans and on-built drawings. Excavations in the vicinity of services should be carried out with due diligence and HSE27 document avoiding dangers from underground services.

Please note that factors such as ground conditions, proximity of other utilities, material and method of construction have an influence on the quality of the data collected on site.

TSA Standards - "A utility mapping survey can be considered a 100% accurate depiction of the sub-surface environment, and the use of these drawings does not remove the requirement for the use of safe digging techniques at all times, in line with requirements of HSE27 and current CDM regulations".



Lucion Survey Ltd
 Protecting People and Planet

Contact Details
 Tel: 01926 810811 Email: mail@luciongroup.com Website: www.luciongroup.com

Client: BARKER ASSOCIATES
 Project: WORSBROUGH BANK END PRIMARY SCHOOL, UNDERWOOD AVENUE, BARNSELEY
 Title: TOPOGRAPHICAL SURVEY

Date: APRIL 2025 Revisions:
 Scale: 1:200@A1
 Dwg No: 673138 -1
 Surveyor: P.C.
 Checked: J.F.S

TOPOGRAPHICAL / BUILDING / 3D LASER SCANNING & REVIT MODELLING
 UTILITY / CCTV DRAINAGE SURVEYS & REMEDIAL DRAINAGE REPAIRS

NOTES

GENERAL NOTES :-
 ALL LEVELS ARE IN METRES DERIVED FROM GPS TRANSFORMATION.
 THIS DRAWING HAS BEEN PRODUCED WITH A PLOT SCALE ACCURACY OF 1:50

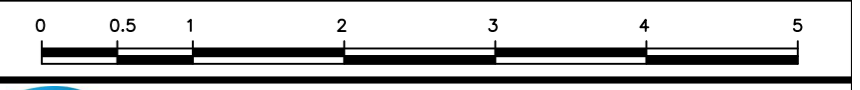
BUILDING SURVEY KEY :-

⊕ - room height	hwt - hot water tank
⊖ - floor boards	ic - inspection cover
∅ - pipe diameter	mc - manhole cover
a/b - air brick	OSBM - Ordnance Survey bench mark
ab - alarm box	rad - radiator
ah - arch head height	rl - roof light
bd - back drop	ro - rain water pipe
bk - brick	sfcc - soil filled chamber
conc - concrete	sh - floor to sill height
cr - cable riser	sp - arch springing point height
db - fuse box	sp - soil pipe
dh - door height	svcc - suspended ceiling
dp - depth	svp - soil vent pipe
e/mtr - electricity metre	Lrnl - heated towel rail
elec - electricity	tl - threshold level
f/p - fire place	top - top of cap
fh - floor to head height	top - top of pipe
fl - floor level	tot - top of tank
fs - floor to sill height	u/s - underside height
g/mtr - gas metre	U/L - unable to lift
gr - gas riser	vp - vent pipe
hd - hand dryer	wf - water fountain
hr - heater	wfc - water filled chamber
	wp - waste pipe

SERVICES KEY :-

⊖	strip light	AK	alarm keypad
⊗	light	IK	intercom
⊙	wall light	ACP	alarm control panel
⊕	emergency light	SPK	speaker
●	spot light	PROJ	projector
○	pull cord	CCTV	closed circuit tv
⊖	vent/extractor	SEN	sensor
⊖	switch	NC	network point
⊖	light switch	TV	coaxial aerial
⊖	fused switch	SD	smoke detector
⊖	isolator switch	HD	heat detector
⊖	cooker switch	FA	fire alarm siren
⊖	fuse	FB	fire break/glass
⊖	blank socket	F	fire sprinkler
⊖	single socket	BT	fire blanket
⊖	double socket	WFE	water fire extinguisher
⊖	ceiling socket/fuse/switch	CFE	co2 fire extinguisher
⊖	thermostat	PFE	powder fire extinguisher
⊖	card access point (swipe card)	FE	fire extinguisher
⊖	emergency door release	FAP	fire alarm control panel

NORTH POINT :- **SHEET LAYOUT :-**

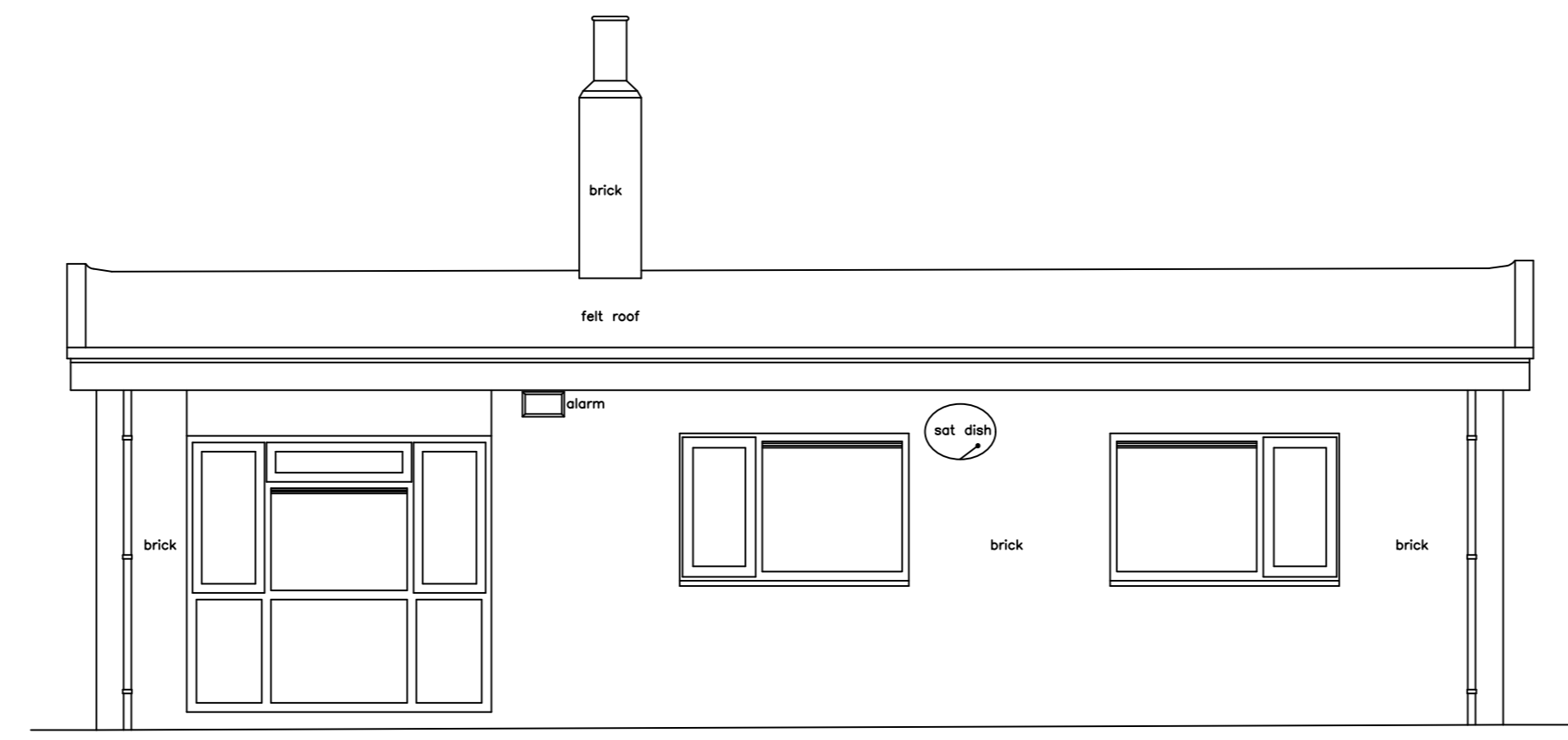


Lucion Survey Ltd
 Protecting People and Planet

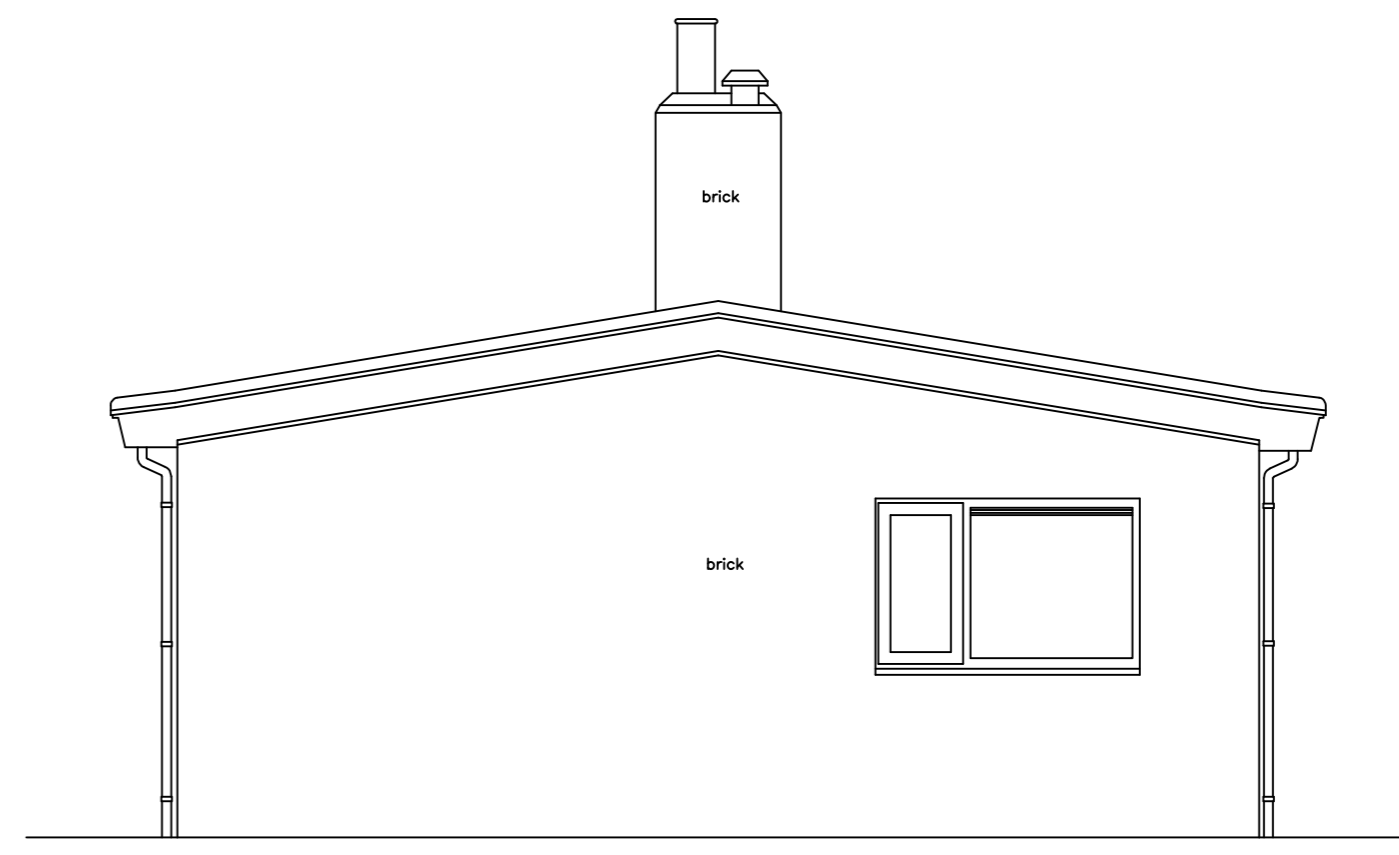
Contact Details
 Tel: 01926 810811 Email: mail@luciongroup.com Website: www.luciongroup.com

Client: BARKER ASSOCIATES
 Project: WORSBROUGH BANK END PRIMARY SCHOOL, UNDERWOOD AVENUE, BARNSELEY
 Title: FLOOR PLAN & ELEVATIONS
 Date: APRIL 2025 Revisions:
 Scale: 1:50/A1
 Dwg No: 673138 -2
 Surveyor: P.C
 Checked: J.F.S

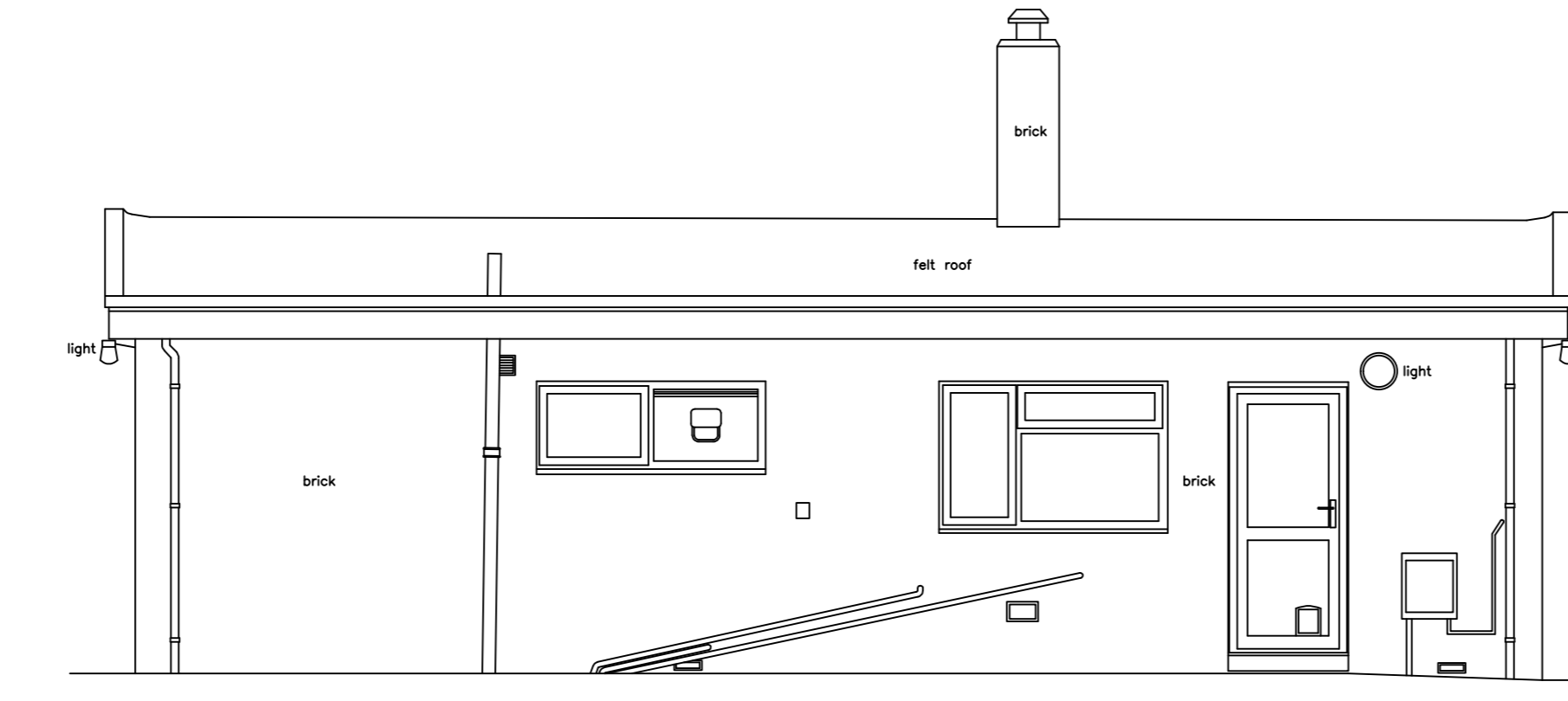
TOPOGRAPHICAL / BUILDING / 3D LASER SCANNING & REVIT MODELLING
 UTILITY / CCTV DRAINAGE SURVEYS & REMEDIAL DRAINAGE REPAIRS



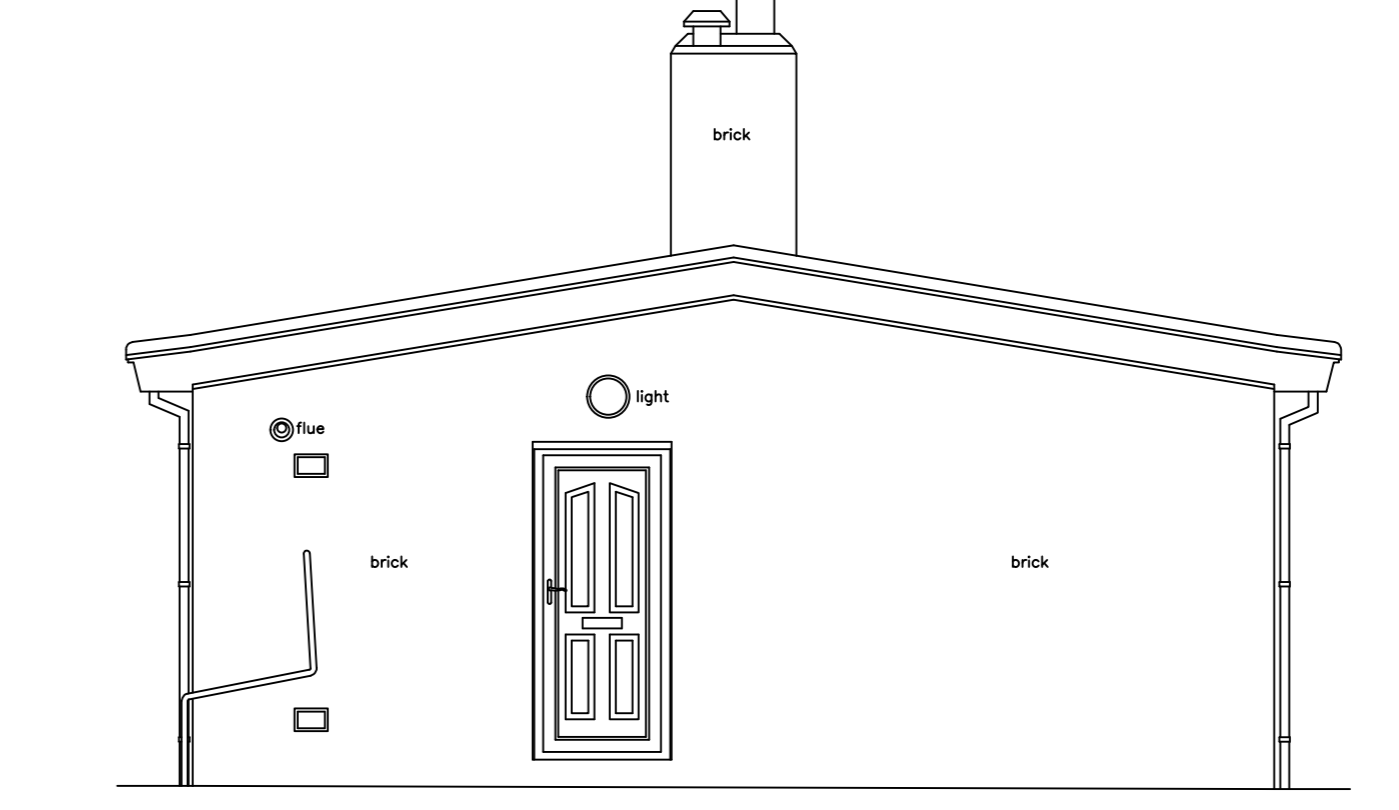
Datum 114.00m
SOUTH ELEVATION



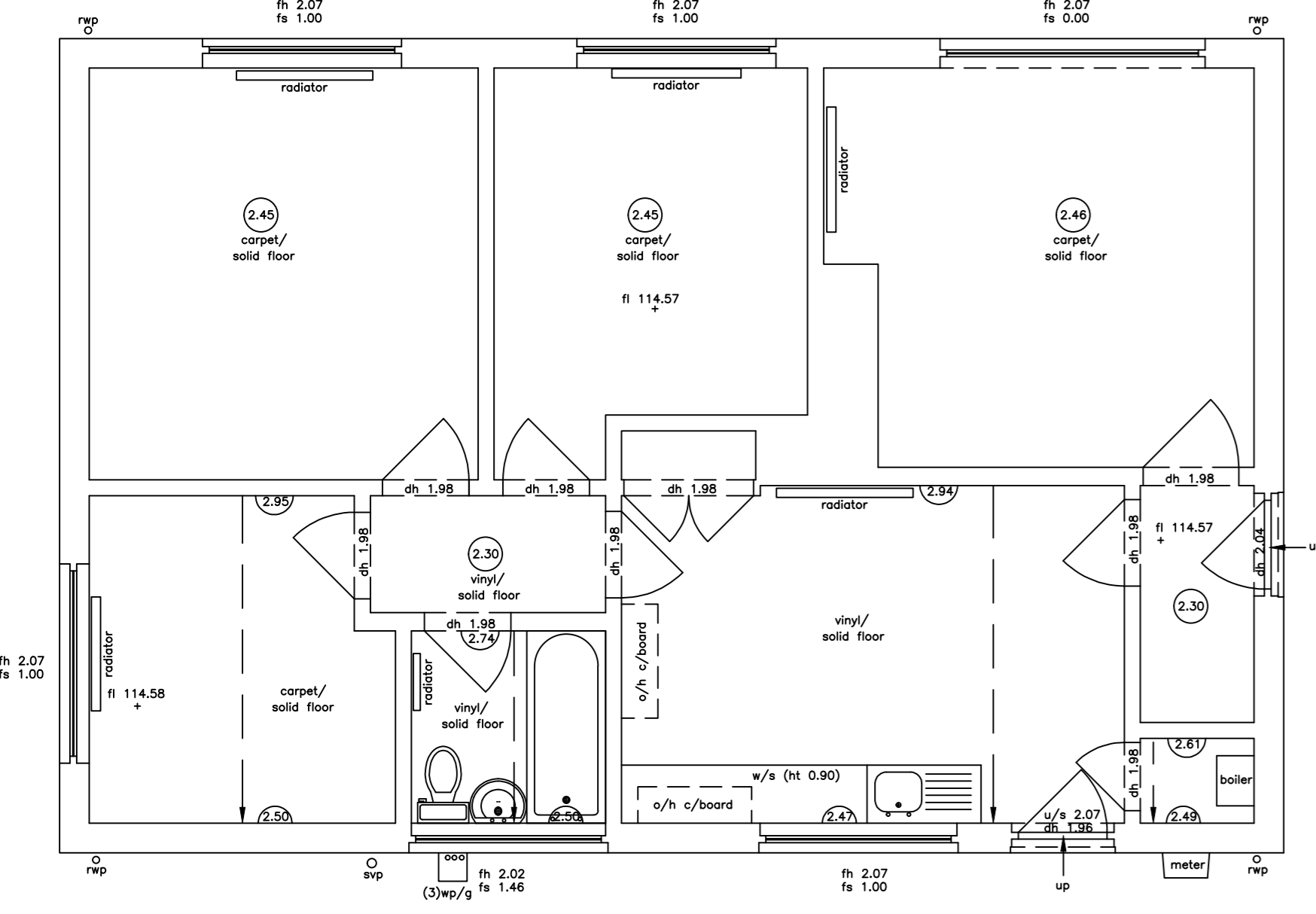
Datum 114.00m
EAST ELEVATION



Datum 114.00m
NORTH ELEVATION



Datum 114.00m
WEST ELEVATION



GROUND FLOOR PLAN