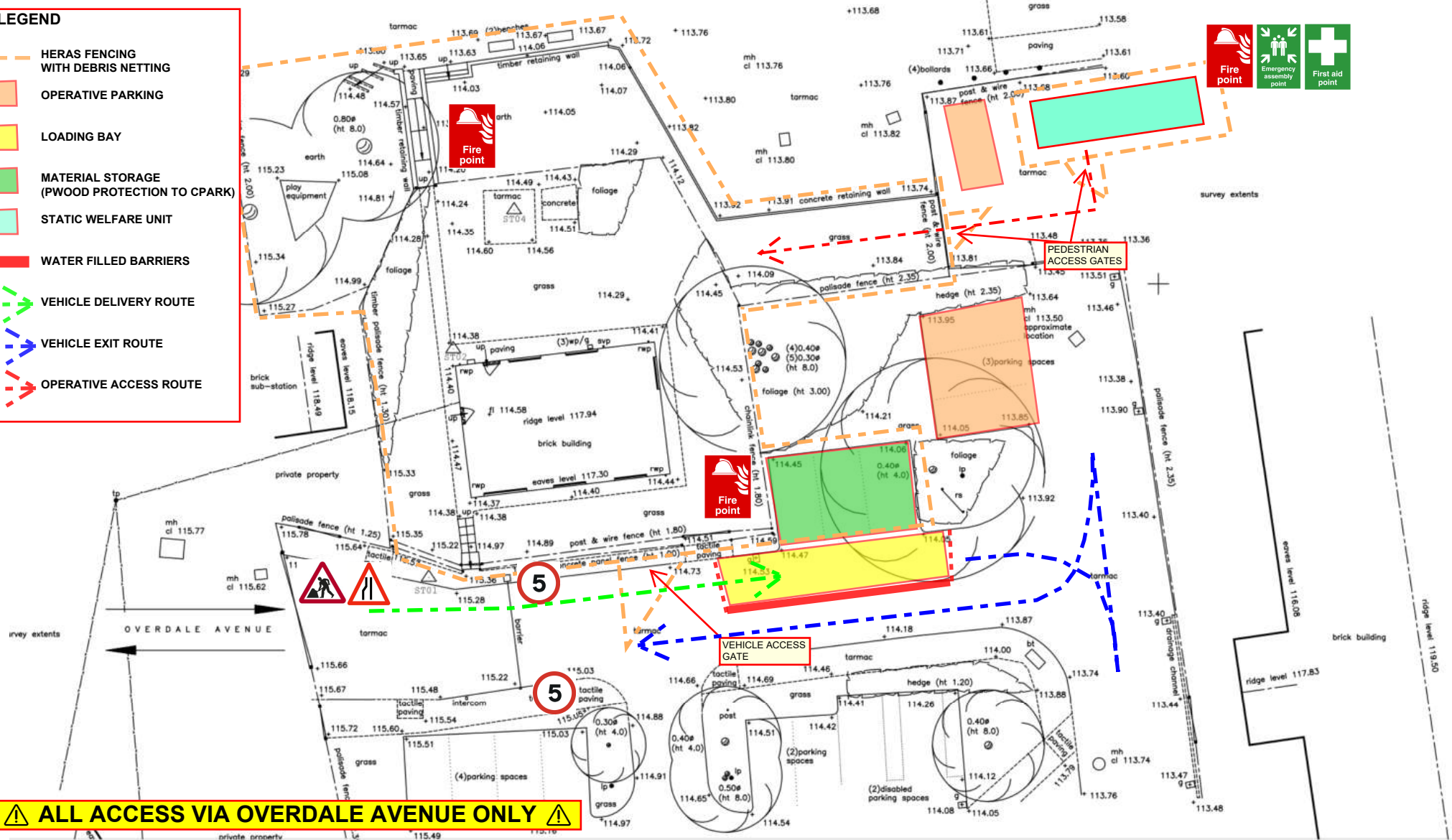


KEY/LEGEND

- HERAS FENCING WITH DEBRIS NETTING
- OPERATIVE PARKING
- LOADING BAY
- MATERIAL STORAGE (PWOOD PROTECTION TO CPARK)
- STATIC WELFARE UNIT
- WATER FILLED BARRIERS
- VEHICLE DELIVERY ROUTE
- VEHICLE EXIT ROUTE
- OPERATIVE ACCESS ROUTE



⚠ ALL ACCESS VIA OVERDALE AVENUE ONLY ⚠

IMPORTANT NOTES:

- No deliveries during school drop-off (08:30-09:00)
- No deliveries during school pick-up (15:00-15:30)
- All muddy vehicles must be washed before leaving site
- Heras fencing with debris netting around works area
- Water filled barriers to guide traffic movements
- Site secured outside working hours (gates locked)
- 5 MPH site speed limit

**TRAFFIC MANAGEMENT PLAN
BANK END PRIMARY SCHOOL**

