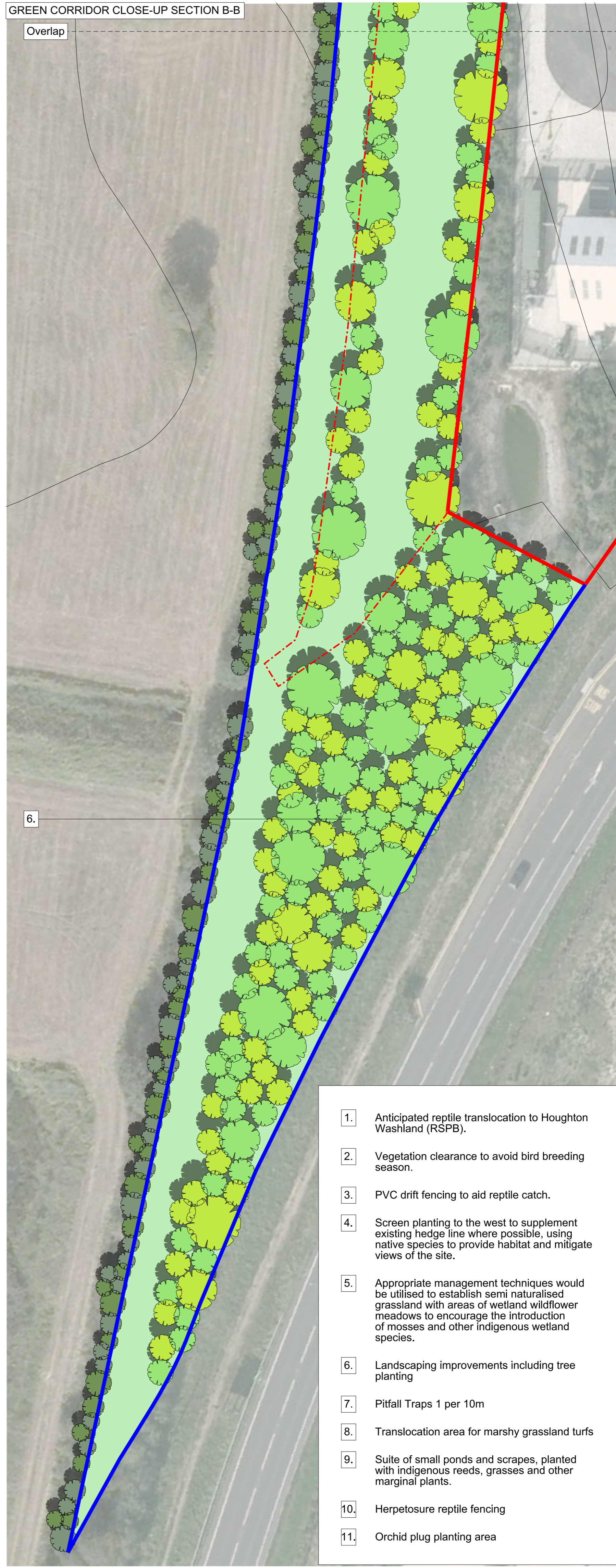


GREEN CORRIDOR CLOSE-UP SECTION A-A

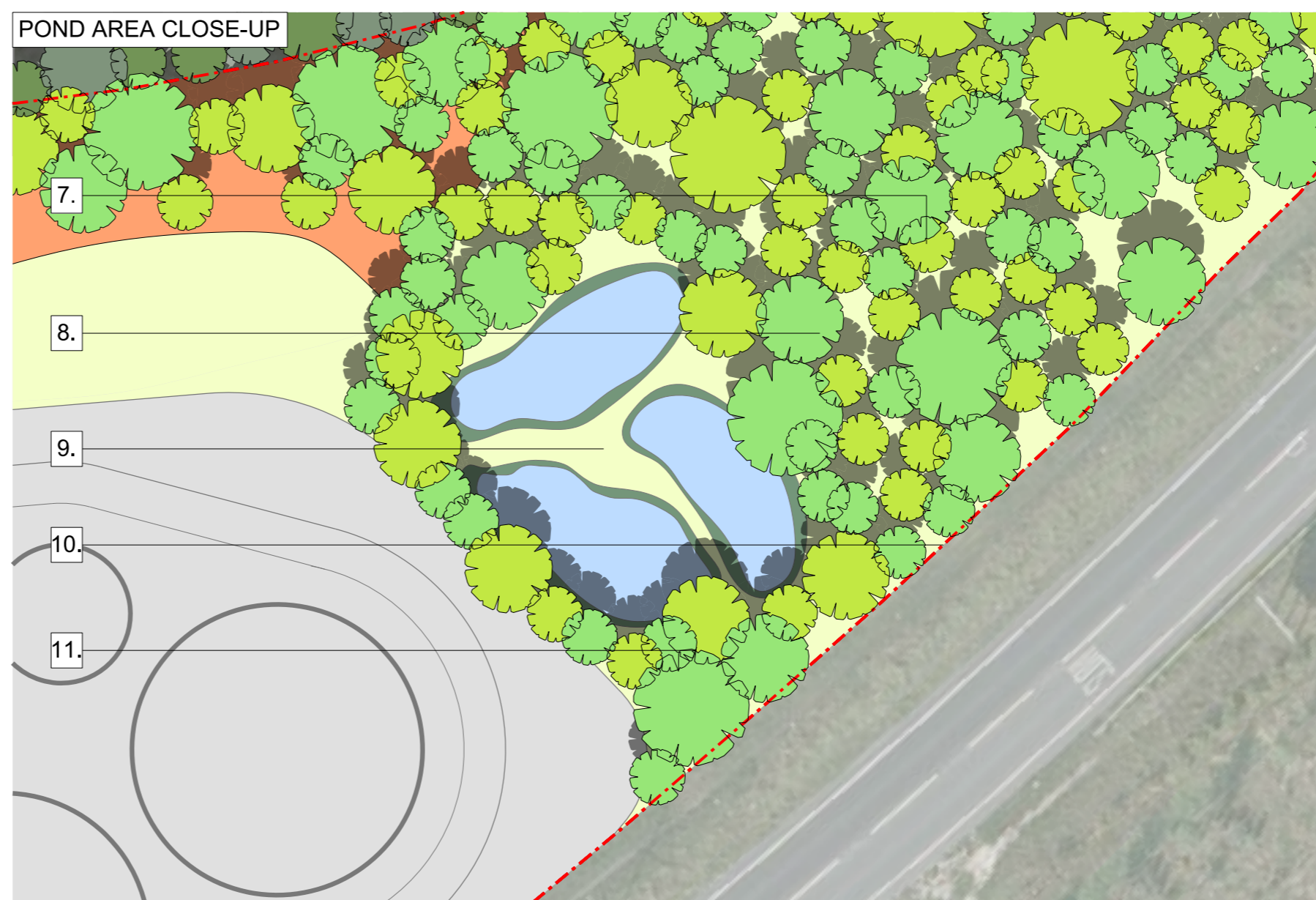


GREEN CORRIDOR CLOSE-UP SECTION B-B

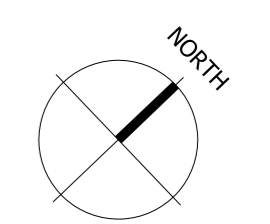


1. Anticipated reptile translocation to Houghton Washland (RSPB).
2. Vegetation clearance to avoid bird breeding season.
3. PVC drift fencing to aid reptile catch.
4. Screen planting to the west to supplement existing hedge line where possible, using native species to provide habitat and mitigate views of the site.
5. Appropriate management techniques would be utilised to establish semi naturalised grassland with areas of wetland wildflower meadows to encourage the introduction of mosses and other indigenous wetland species.
6. Landscaping improvements including tree planting
7. Pitfall Traps 1 per 10m
8. Translocation area for marshy grassland turfs
9. Suite of small ponds and scrapes, planted with indigenous reeds, grasses and other marginal plants.
10. Herpetosure reptile fencing
11. Orchid plug planting area

POND AREA CLOSE-UP



- NOTE
1. THIS DRAWING IS COPYRIGHT GSDA LTD.
 2. THE CONTRACTOR MUST NOT SCALE FROM THE DRAWING ALL DIMENSIONS TO BE TAKEN FROM DIMENSION STRINGS.
 3. WHERE ANY DISCREPANCIES ARE FOUND BETWEEN DIMENSIONS THESE MUST BE BROUGHT TO THE ATTENTION OF THE ARCHITECTS FOR RESOLUTION.
 4. WHERE DISCREPANCIES EXIST BETWEEN REFERENCE OR ASSEMBLY DRAWINGS & DETAIL DRAWINGS, THE LATTER TAKE PREFERENCE.



- KEY
- Site Boundary
 - Alkane Lease Boundary
 - Harworth Residual Land
 - Existing Vegetation
 - Proposed Woodland Screen Planting
 - Proposed Woodland Edge Planting
 - Grassland
 - Ornamental Planting
 - Ponds and Marginal Planting
 - Landscaped Green Corridor
 - Sculptural / Historical Focal Point

A	140929	Issued for information
-	140925	Issued for information

FOR INFORMATION

GSDA
 Highlands House, Office 101A, 165 The Broadway, Wimbledon, London, SW19 1NE
 T: 020 8544 9065

HOUGHTON MAIN REP

PROJECT
 Landscaping Masterplan
 Green Corridor and
 Ponds Close Up
 DRAWING

1:400@A1 140929
 1:800@A3
 SCALE DATE

1302_SK167	A	GS
DWG. NO.	REVISION	CHECKED

0 10 20 30 40m