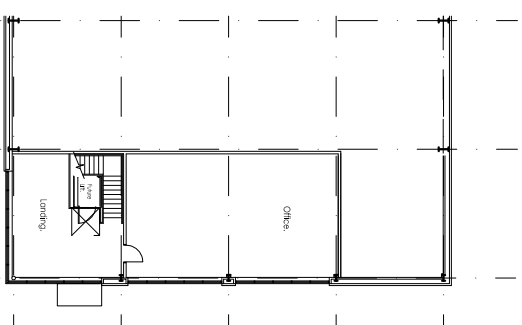


GROUND FLOOR PLAN. (1:200)



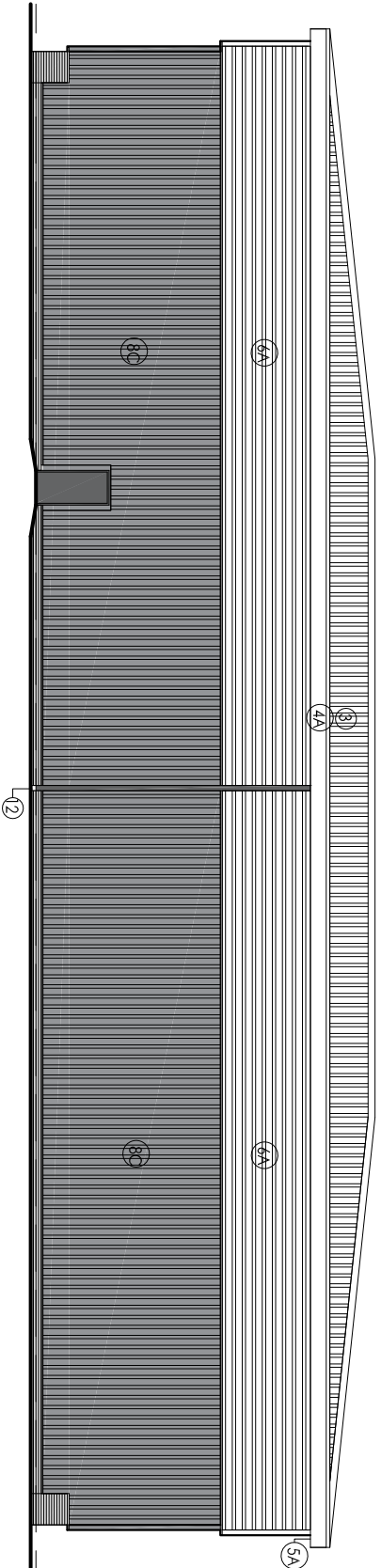
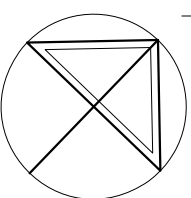
FIRST FLOOR PLAN.

# UNIT 5

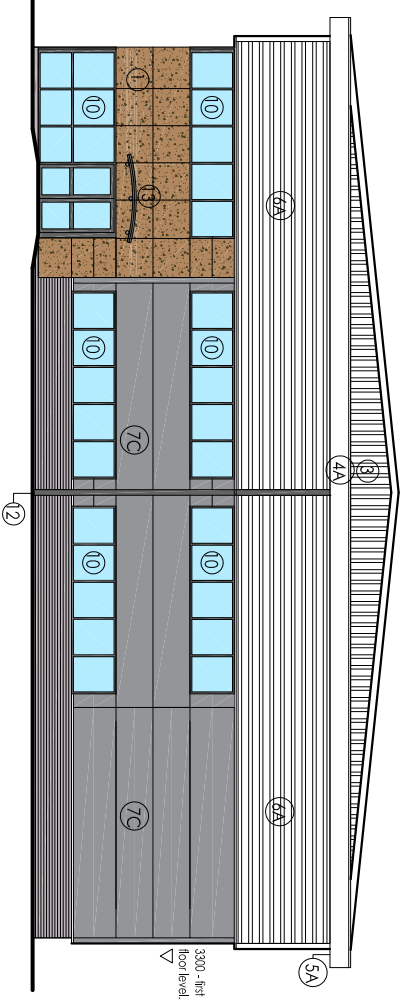
This drawing is subject to Building Regulations Approval.

**Materials and Finishes.**

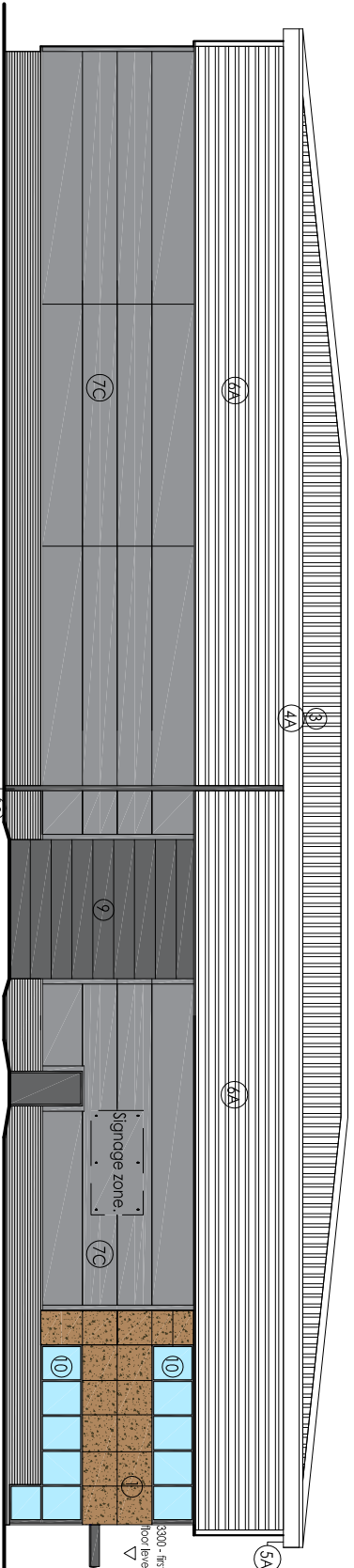
- ① Wall - Trepan - Hardened Brown MADS
- ② Wall - Brick - Eternal Marble Grey, coloured mortar (Light Grey)
- ③ Roofs - HF9200 coated steel - Taro Steel, Hornlet
- ④ Facades - HF9200 coated steel - Taro Steel, Hornlet
- ⑤ Soffit - HF9200 coated steel - Taro Steel, Hornlet
- ⑥ Wall - High level cladding - HF9200 coated steel - Taro Steel, Hornlet
- ⑦ Wall - Flat panel cladding HF9200 coated steel - Taro Steel, Alaska Grey
- ⑧ Wall - Steel Cladding HF9200 coated steel - Taro Steel, Alaska Grey
- ⑨ Loading Door - HF9200 coated steel - Taro Steel, Antirocile
- ⑩ Windows/Doors - Polyester coated aluminium frames - Rd.7012 (Dark Grey) and Glazing - Crystal Blue
- ① Fire Exit Doors - Glass panellied steel - Rd.7012 (Dark Grey)
- ② Rain Water Pipes - Rd.7012 (Dark Grey)
- ③ Canopy - Glass with Rd.7012 Structure (Dark Grey)



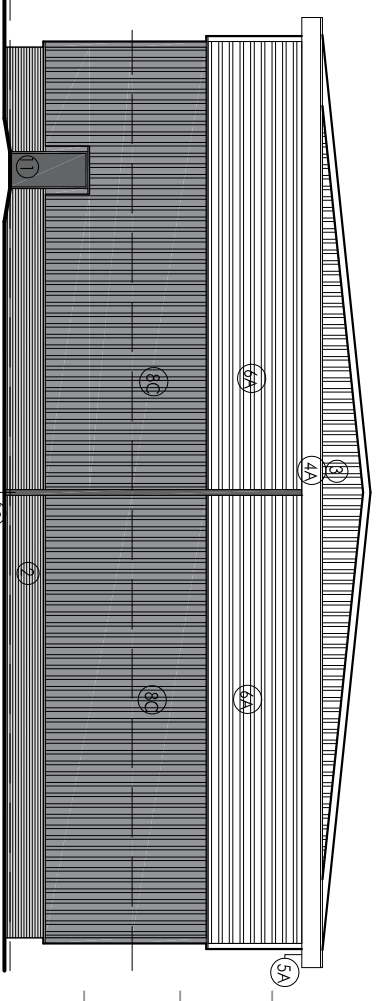
NORTH EAST.



SOUTH EAST



SOUTH WEST.



NORTH WEST.

Do not scale from this drawing.

[www.oneyefordesign.co.uk](http://www.oneyefordesign.co.uk)

Tel 01430 421480  
Mob 07713 646411

PROJECT  
PROPOSED DEVELOPMENT  
CAPITOL PARK  
BARNDSLEY

UNIT 5  
ELEVATION DETAIL

Scale	Drawn By
A3	MW
Checked By	Date Drawn
	13/07/2017
Revision	

MCW612