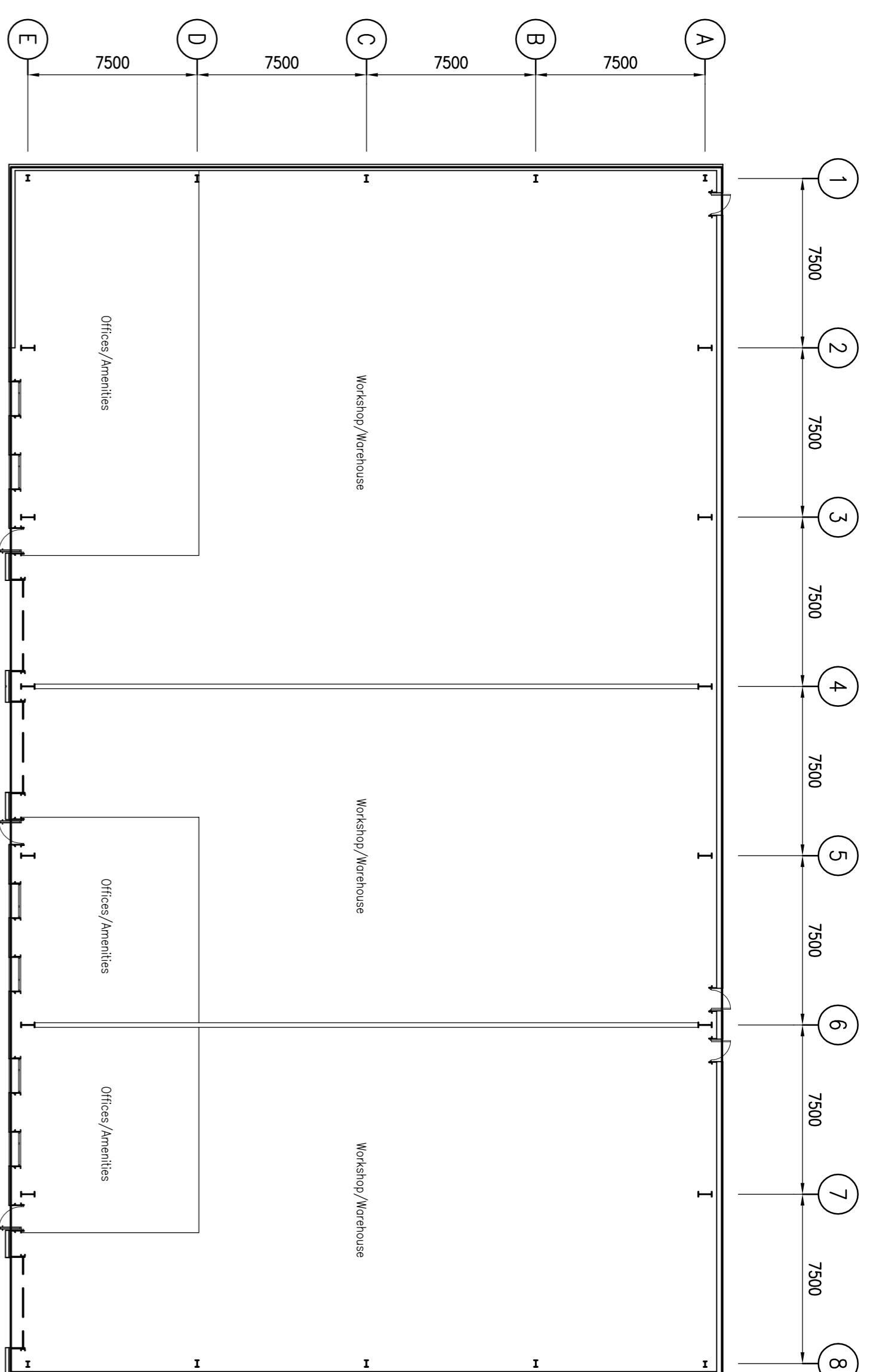


Information within this drawing is not necessarily produced to scale. Always use figured dimensions and co-ordinates – if in doubt, ask.

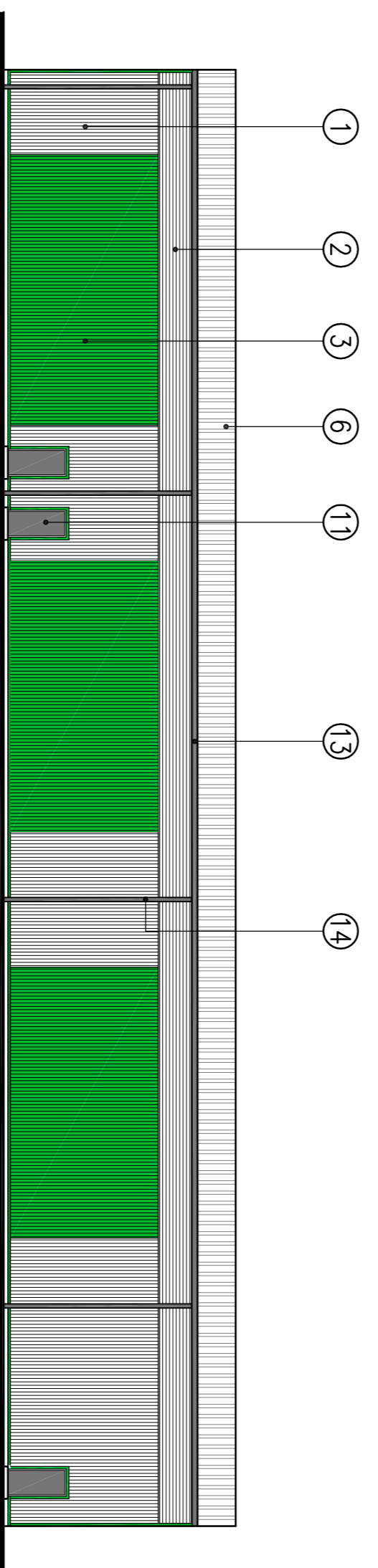
NOTES

- ① – Architectural Profiles Ltd. AP45HR style or similar approved posttisol coated half round profile wall cladding laid vertically. Colour to be Gossaming Grey with Heritage Green flashings.
- ② – Architectural Profiles Ltd. AP45HR style or similar approved posttisol coated half round profile wall cladding laid horizontally. Colour to be Gossaming Grey with Heritage Green flashings.
- ③ – Architectural Profiles Ltd. AP45HR style or similar approved posttisol coated half round profile wall cladding laid vertically. Colour to be Heritage Green with Heritage Green flashings.
- ④ – Kingspan Micro-Rib KS1000 style or similar approved composite panels laid horizontally.
- ⑤ – Polyester coated portico surround. Colour to be Heritage Green.
- ⑥ – Trapezoidal profile roof cladding. Colour to be Gossaming Grey.
- ⑦ – Sectional up and over vehicle entry doors. Colour to be Gossaming Grey.
- ⑧ – Roller shutters over door and ground floor windows. Colour to be Heritage Green.
- ⑨ – Polyester coated aluminium window frames. Colour to be Heritage Green.
- ⑩ – Polyester coated aluminium glazed door frames. Colour to be Heritage Green.
- ⑪ – Steel face fire escape doors. Colour to be Grey.
- ⑫ – Posttisol coated bull nosed overhanging feature with concealed gutter. Colour to be Heritage Green
- ⑬ – Posttisol coated gutters. Colour to be Grey.
- ⑭ – Posttisol coated rain water pipes. Colour to be Grey.
- ⑮ – Protection ballials. Colour to be Black & White.

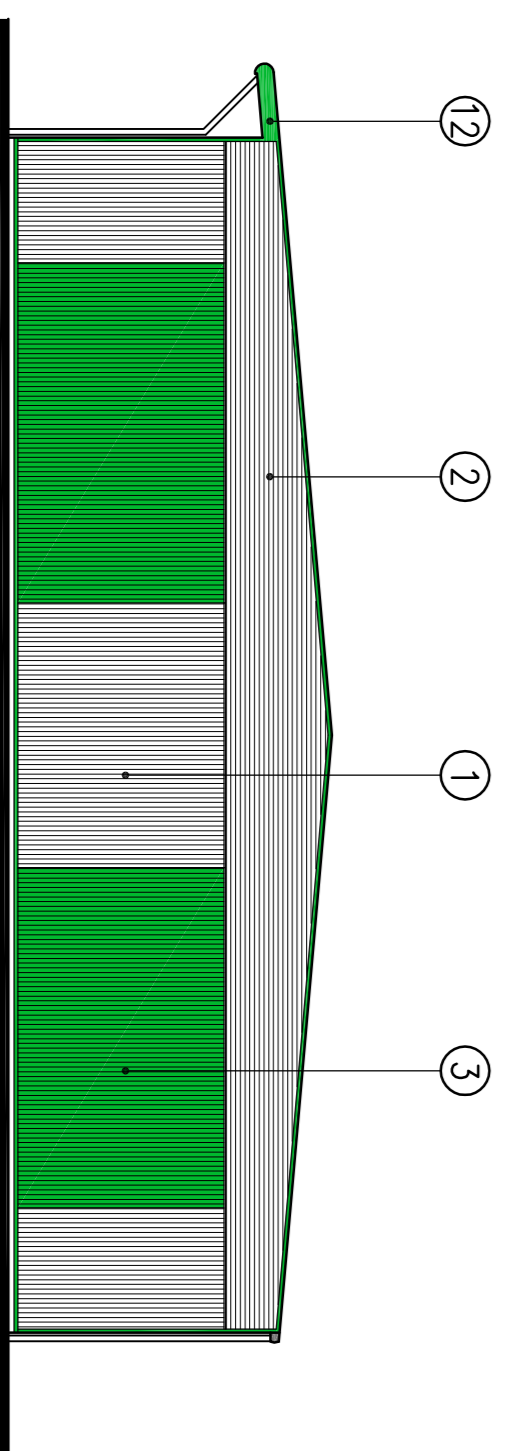
IMPORTANT NOTE :-
All cladding to comply with BREEM requirements as noted in the specification.



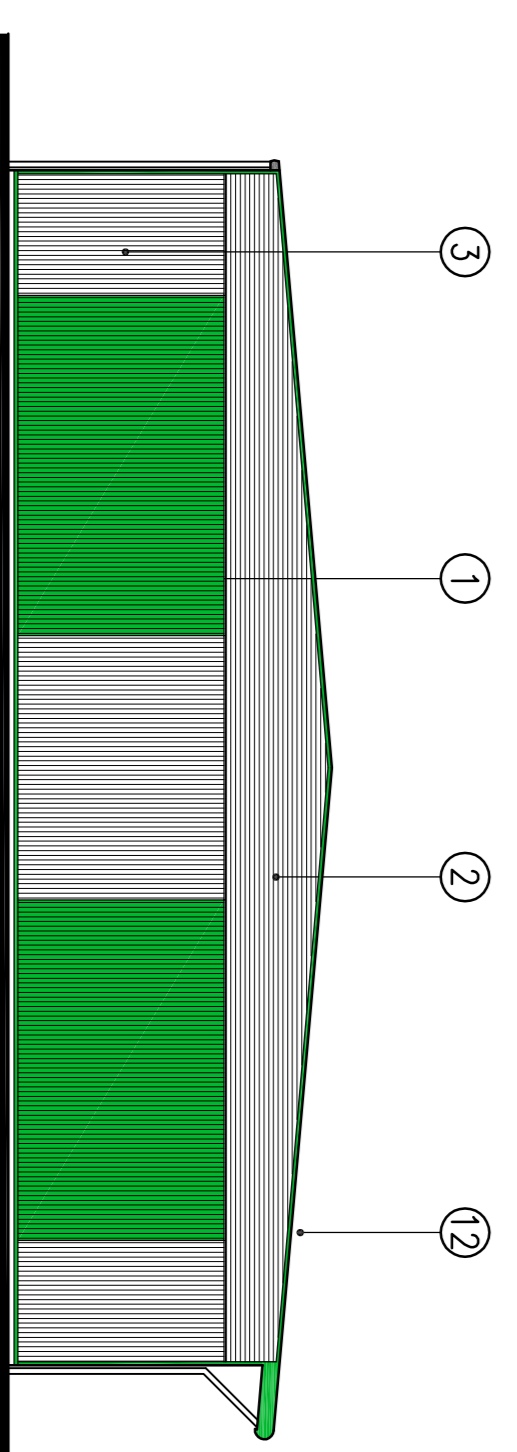
FRONT ELEVATION



REAR ELEVATION



GABLE ELEVATION



GABLE ELEVATION

| REV | DESCRIPTION | SIG | CHK | DATE |
|-----|--------------|-----|-----|------|
| A | First Issue. | | | |

E.V. WADDINGTON LTD.

SHORTWOOD BUSINESS PARK,
HOYLAND. – SITE 2

BUILDING 2
FLOOR PLANS AND ELEVATIONS

Eastwood & Partners
CONSULTING ENGINEERS
St. Andrew's House
23 Kingfield Road
Sheffield
S11 9AS
Tel 0114 255 4554
Fax 0114 255 4330
mail@eastwoodandpartners.com
www.eastwoodandpartners.com



SCALE WHEN PLOTTED AT A1
DRAWING STATUS:
PRELIMINARY

| DRAWN | CHECKED | DATE | DRAWING NUMBER | REV |
|-------|---------|----------|----------------|-----|
| MW | GMS | 07-11-13 | 35189/013 | A |