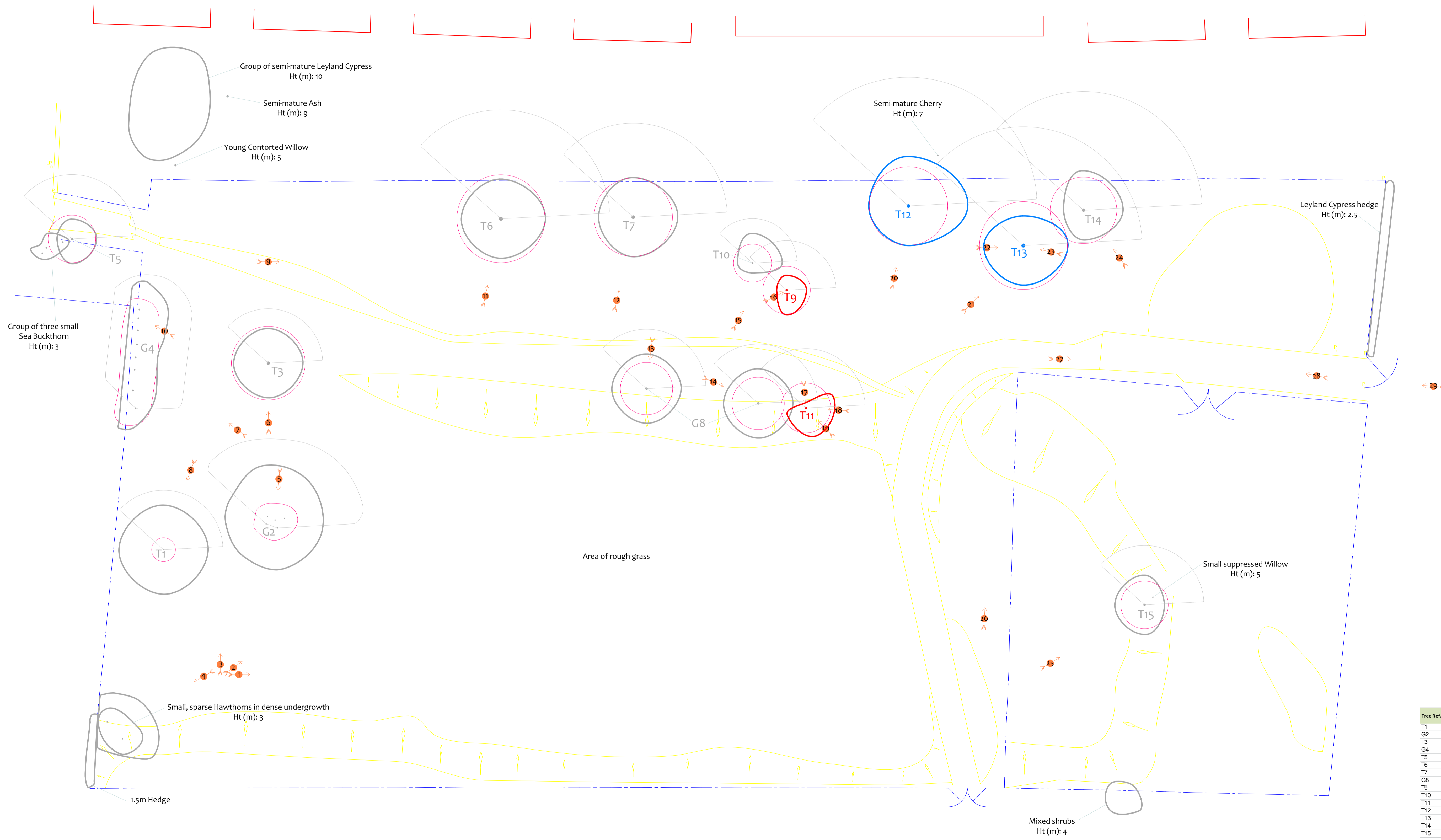


# Tree Constraints Plan

(Existing Layout)



Tree Ref.	Species	Height (m)	Root Protection Area		
			Radius (m)	m <sup>2</sup>	Square (m)
T1	Willow	6	1.2	5	2.1
G2	Willow	8	1.2	5	2.1
T3	Hawthorn	5.5	3.7	43	6.6
G4	Hawthorn	4.5	1.7	9	3.0
T5	Oak	6.5	2.4	18	4.3
T6	Cherry	11	4.4	62	7.9
T7	Rowan	9.5	4.0	49	7.0
G8	Apple	6	2.6	22	4.7
T9	Apple	5	2.4	18	4.3
T10	Apple	4.5	1.9	12	3.4
T11	Rowan	6	2.5	20	4.5
T12	Red Oak	13	4.0	49	7.0
T13	Scots Pine	12	4.4	62	7.9
T14	Atlas Cedar	12	3.4	35	6.0
T15	Holly	6	2.4	18	4.3

**BS 5837 Retention Categories**

**Category A:**  
Trees of high quality and amenity. Usually mature trees with a significant life expectancy which would enhance any development. Retention of these trees is strongly encouraged.

**Category B:**  
Trees of moderate quality and amenity. Usually mature trees, or younger trees with exceptional form. Retention of these trees is desirable through the removal of occasional specimens may be acceptable.

**Category C:**  
Trees of low quality and amenity. The removal of these trees should generally be seen as acceptable in order to facilitate development.

**Category U:**  
Trees whose structural condition is such that they should be removed if development is to proceed.

**CROWN**  
Arboricultural Consultants  
01422 316660

Site: Sheerfen Close, Athersley, Barnsley S71 3NQ

Ref No: 08835

Revision: 1

Scale: 1:200

Paper Size: A1

BS 5837 Shade Pattern

BS 5837 Root Protection Area

T1 Tree number 1

G2 Group number 2

H3 Hedge number 3

Location of photo No 1

Stem & canopy of Category A tree

Stem & canopy of Category B tree

Stem & canopy of Category C tree

Stem & canopy of Category U tree

