

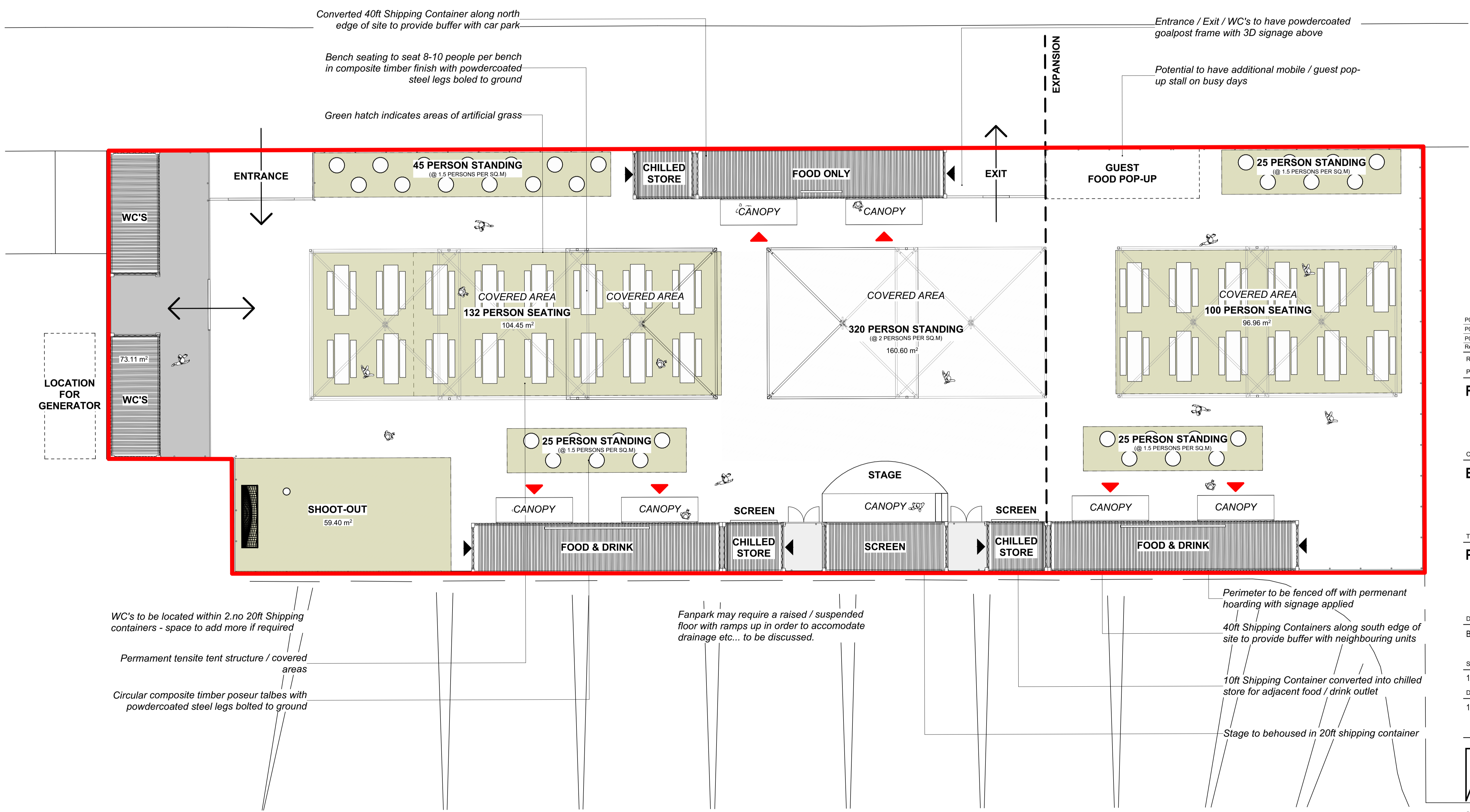
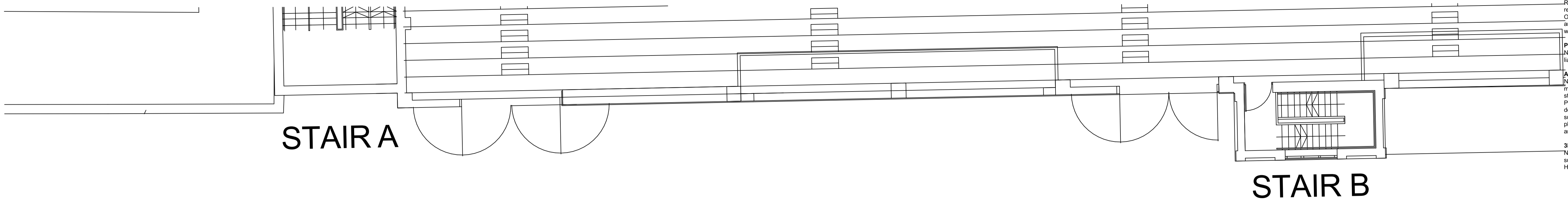
**NOTES**  
 Check all dimensions on site. Do not scale from this drawing. Report any discrepancies and omissions to HLM Architects. This Drawing is Copyright ©

**DESIGN/SKETCH DESIGN**  
 Unless stated otherwise, the designs shown are subject to detailed site survey, investigations, and legal definition, the CDM Regulations, and the comments and / or approval of the various relevant Local Authority Officers, Statutory Undertakers, Fire Officers, Engineers and the like. They are copyright, project specific and confidential and no part is to be used or copied in any way without the express prior consent of HLM Architects.

**PHOTOCOPIED/SCANNED INFORMATION**  
 NB This drawing is based on photocopied / scanned information liable to distortion in scale.

**AREA CALCULATIONS**  
 NB The areas shown are approximate only and have been measured off preliminary drawings as the likely areas at the current state of design using the stated option from the Code of Measuring Practice, 4th edition, RICS/SIVA. These may be affected by future design development and construction tolerances, or the result of surveys for existing buildings. Take account of these factors before planning any financial or property development purpose or strategy and seek confirmation of latest areas before decision making.

**3RD-PARTY INFORMATION**  
 NB This drawing includes information provided by independent surveyors and/or consultants, to whom all queries shall be made. HLM Architects can accept no liability for its content or accuracy.



P03 Issue for Planning Application	24.01.25	JH	NB
P02 Amended to Comments Received	21.01.25	JH	NB
P01 Issue for Review and Comment	16.01.25	JH	NB
Rev Description	Date	By	Chk

Revisions Suitability  
 Project SO - for Information

**Fanzone**

Client

**Barnsley FC**

Title

**Proposed Fanzone Plan**

Drawing No. BFC-HLM-XX-00-D-A-0005 Revision P01

Scale 1:100 @A1 Drawn JH

Date 16 January, 2025 Checked NB

16 January, 2025 NB



© HLM Architects  
 The Ruskin Building  
 Tudor Square  
 Sheffield S1 2LA

www.hlmarchitects.com  
 T: +44 (0) 114 263 9600  
 F: +44 (0) 114 263 9650  
 sheffield@hlmarchitects.com

WC's to be located within 2.no 20ft Shipping containers - space to add more if required

Permanent tensite tent structure / covered areas

Circular composite timber poseur talbes with powdercoated steel legs bolted to ground

Fanpark may require a raised / suspended floor with ramps up in order to accomodate drainage etc... to be discussed.

Perimeter to be fenced off with permanent hoarding with signage applied

40ft Shipping Containers along south edge of site to provide buffer with neighbouring units

10ft Shipping Container converted into chilled store for adjacent food / drink outlet

Stage to be housed in 20ft shipping container