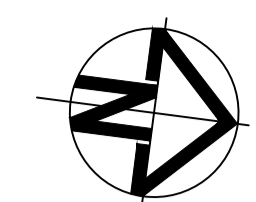
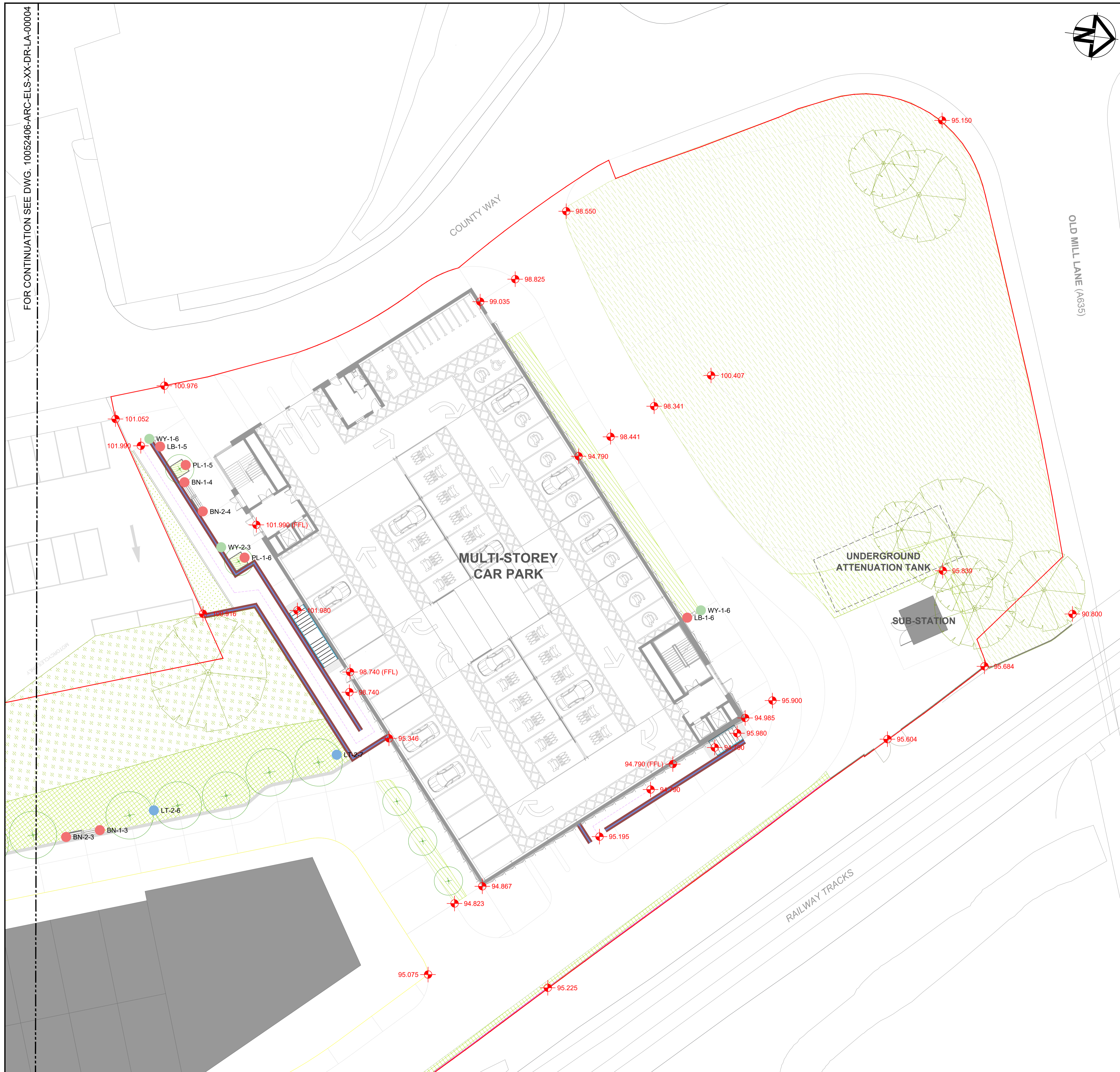


FOR CONTINUATION SEE DWG. 10052406-ARC-ELS-XX-DR-LA-00004



- LEGEND:**
- PAVED AREA (Indicative pattern/formatting)
 - FEATURE PAVED ROUTE (Connectivity to different areas; Indicative wayfinding)
 - FEATURE PAVED AREA (Additional surface textures; To complete planting shapes)
 - ASPHALT SURFACE (Suitable for vehicular use; Buff colour)
 - GRAVEL SURFACE (10mm; Natural Colour)
 - PLANTING: ORNAMENTAL
 - PLANTING: SuDS / RAIN-GARDENS
 - PLANTING: NATIVE HEDGING / SCREENING
 - PLANTING: WILDFLOWER
 - PLANTING: WILDFLOWER (To replenish/replace existing grass mound)
 - PLANTING: MOWN GRASS
 - PLAY-ON-THE-WAY ROUTE
 - RETAINED PLANTING
 - SEATED WALL
 - RETAINING WALL: CONCRETE/STONE
 - RETAINING WALL: GABION (To match the adjoining building specification)
 - TREE (Nominal size; Number shown subject to change)
 - RETAINED TREE
 - MARKET STALLS (Indicative)
 - FURNITURE
 - BN-1: Fixed Benches (1.2m spacing)
 - BN-2: Removable Benches (1.2m spacing)
 - BN-1: Benches
 - BN-2: Bench with Back Support
 - BN-3: Tables and Chairs
 - BN-4: Bicycle Rack
 - LB-1: Litter Bin (includes waste/recycling compartments)
 - PC-1: Tree Planter
 - PLAY-ON-THE-WAY EQUIPMENT
 - PE-1: Wobble Stone
 - PE-2: Mounds
 - PE-3: Stepping Bridge
 - PE-4: Natural Stone
 - PE-5: Telephone Speaker
 - PE-6: Kaleidoscope
 - WAYFINDING
 - WY-1: Finger Post
 - WY-2: Branched Gateway Sign Integrated into Structure
 - WY-3: Totem with Map
 - LIGHTING*
 - LT-1: Multi-head projector column (12m)
 - LT-2: Multi-head projector column (8m)
 - LT-3: Lighting Column (4m)
 - LT-4: Illuminated Bollard
 - * Location indicative only. Refer to stage 3 lighting strategy
 - Tactile Warning Studs/Paving (800mm Wide)
 - ACOUSTIC PERIMETER FENCING (1.8m High)
 - POST AND RAIL FENCING (1.1m High)
 - BALUSTRADE (1.1m High; Includes handrail where required)
 - HANDRAIL (Attached to structure)
 - PHASE 1 PROJECT BOUNDARY

SAFETY, HEALTH AND ENVIRONMENTAL INFORMATION

In addition to the hazards/risks normally associated with the types of work detailed on this drawing, note the following:

CONSTRUCTION
MAINTENANCE/CLEANING
NONE
DECOMMISSIONING/DEMOLITION
NONE

It is assumed that all works will be carried out by a competent contractor working, where appropriate, to an approved method statement

Rev	Date	Description	Prod.	Chk.	Rev.	App.
P01.3	07/07/22	Issued for planning approval	LI	AS	AT	--
P01.2	06/07/22	Issued for planning approval	LI	AS	AT	--
P01.1	01/07/22	Draft issued for planning approval	LI	AS	AT	--



Project: **THE SEAM**

Site: The Seam, Barnsley

Client: Barnsley Metropolitan Borough Council
Barnsley Council, PO Box 634, Barnsley S70 9GG
www.barnsley.gov.uk



Registered office: 80 Fenchurch Street, London EC3M 4BY

Coordinating office: 80 Fenchurch Street, London EC3M 4BY
Tel: 44 (0)20 7812 2000

PUBLIC REALM DESIGN PHASE 1 GENERAL ARRANGEMENT SHEET 4 OF 4

Designed: L. Johnstone	Signed: L. Johnstone	Date: 07/07/22
Produced: L. Johnstone	Signed: L. Johnstone	Date: 07/07/22
Checked: A. Sumfith-Stevens	Signed: A. Sumfith-Stevens	Date: 07/07/22
Reviewed: A. Tully	Signed: A. Tully	Date: 07/07/22
Approved: ---	Signed: ---	Date: ---
Design Stage: Detailed Design		
Original Size: A1	Grid: OS	Datum: AOD
Suitability Code: S2	Scale: 1:200	Project Number: 10052406

FOR PLANNING

Drawing Number: 10052406 - ARC - ELS - XX - DR - LA - 00006

Revision: P01.3

