



1 North
1 : 50

H61/110 Fibre cement roof slating

H61/405 Dry verge

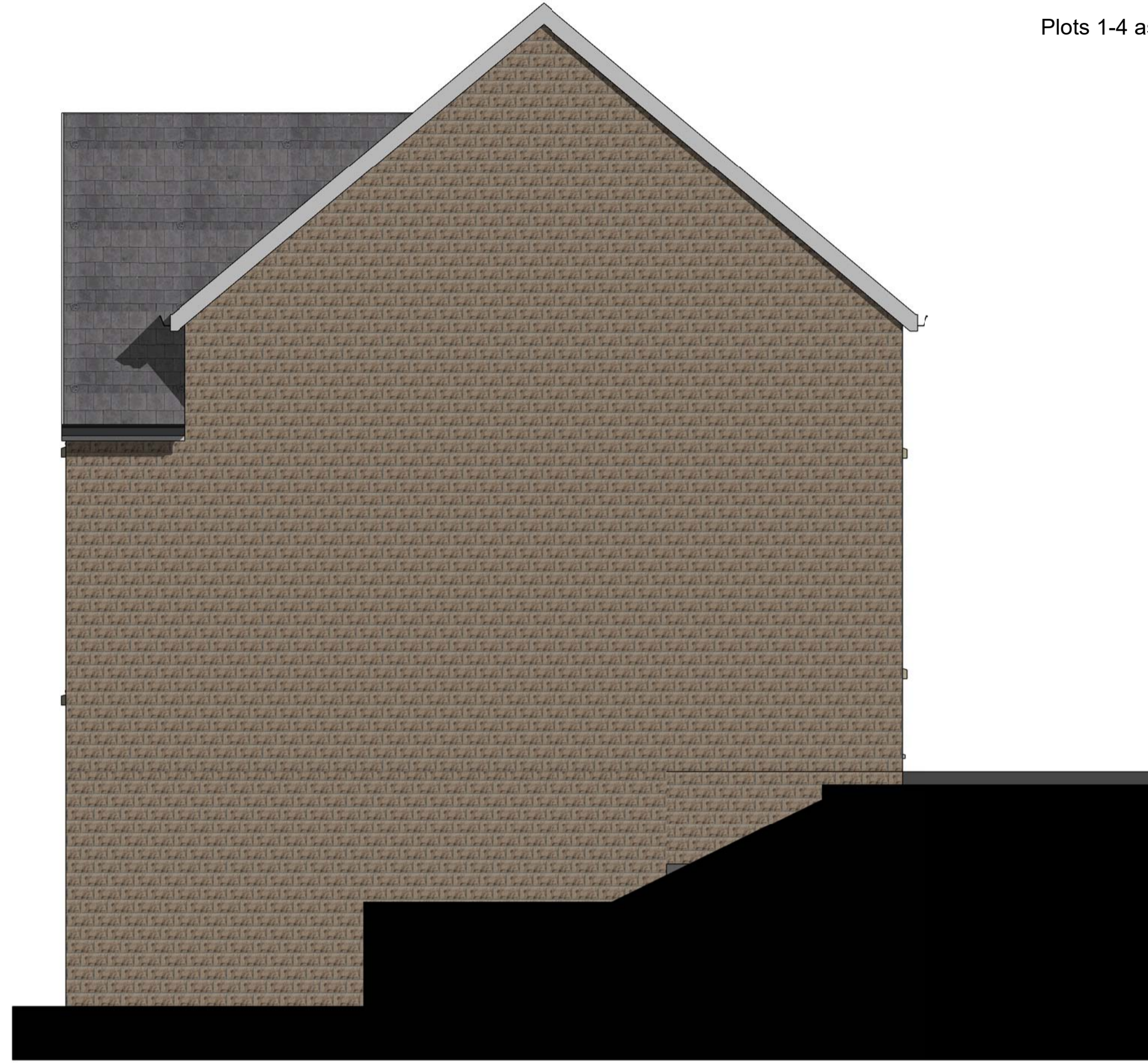
H32/110 Plastics fascia

F10/290 Manmade stone

L10/350 PVC-U windows

F22/120 Cast stone heads and cills

L20/680 Roller garage doors



2 West
1 : 50

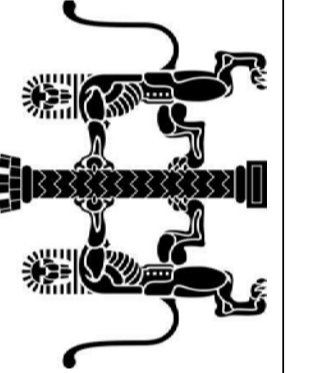
Plots 1-4 as this, Plot 5 handed



4 South
1 : 50



3 East
1 : 50



Rev	Description	Date

Hadfield Developments	
Tower Street, Barnsley	
House Type Elevations	
Project number	17-185-
Date	31/07/2017
Drawn by	Author
Checked by	Checker
P02	
Scale	1 : 50