

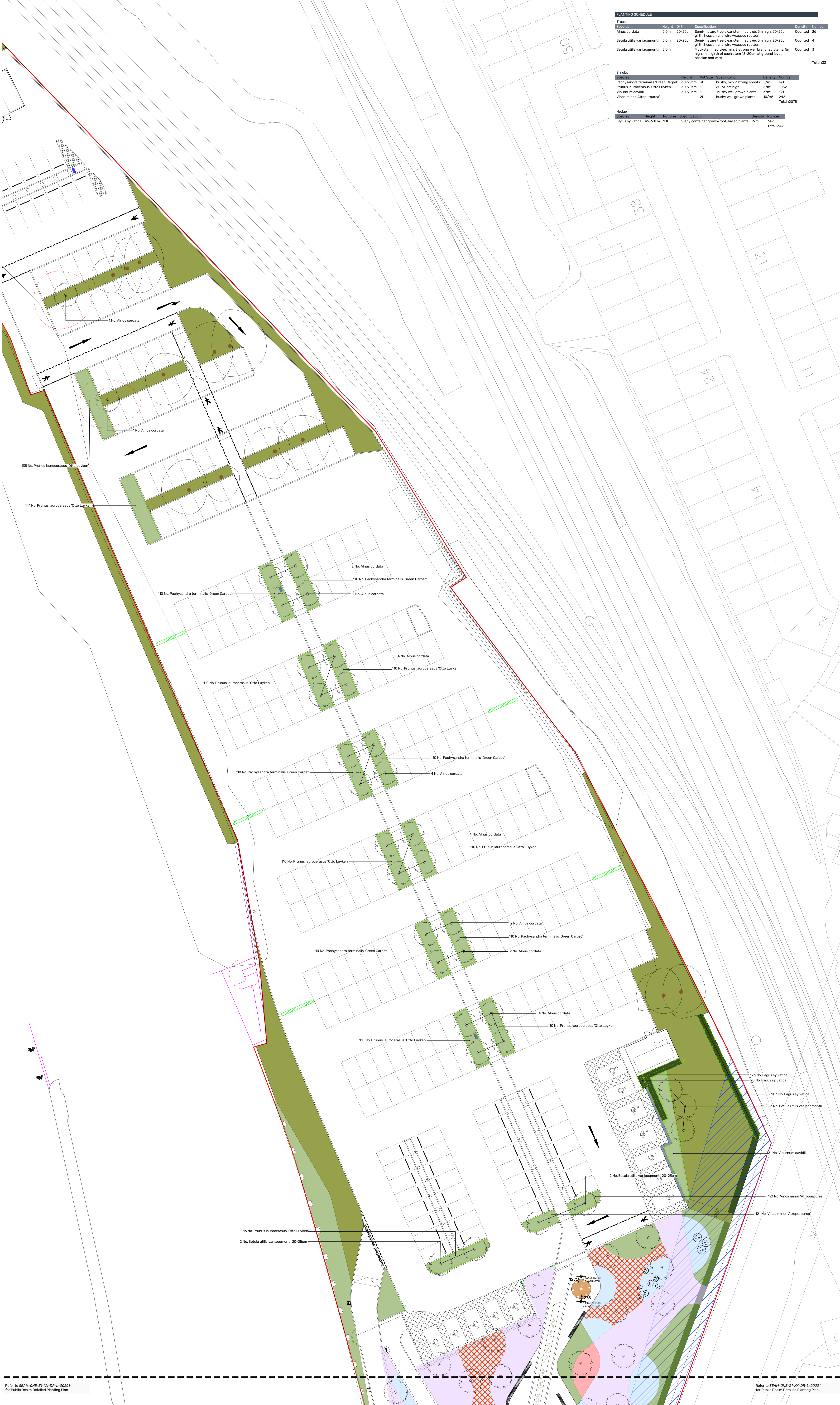
PLANTING SCHEDULE

Species	Height	Pot Size	Specification	Density	Number
Trees					
<i>Alnus cordata</i>	5.0m	20-25cm	Semi-mature tree clear stemmed tree, 5m high, 20-25cm girth, hessian and wire wrapped rootball.	Counted	24
<i>Betula utilis</i> var <i>jacqmontii</i>	5.0m	20-25cm	Semi-mature tree clear stemmed tree, 5m high, 20-25cm girth, hessian and wire wrapped rootball.	Counted	4
<i>Betula utilis</i> var <i>jacqmontii</i>	5.0m		Multi-stemmed tree, min. 3 strong well branched stems, 5m high, min. girth of each stem 8-20cm at ground level, hessian and wire	Counted	5
Total: 33					
Shrubs					
<i>Pachysandra terminalis</i> 'Green Carpet'	60-90cm	3L	bushy, min 9 strong shoots	5/m ²	600
<i>Prunus laurocerasus</i> 'Otto Luyken'	60-90cm	10L	60-90cm high	5/m ²	1052
<i>Viburnum davidii</i>	60-90cm	10L	bushy well grown plants	3/m ²	121
<i>Vinca minor</i> 'Atropurpurea'	2L		bushy well grown plants	10/m ²	242
Total: 2075					
Hedge					
<i>Fagus sylvatica</i>	45-60cm	10L	bushy container grown/root-balled plants	9/m	349
Total: 349					

LEGEND

- Existing Soft Landscape Area to be retained
- Proposed Species Rich Grass
- Proposed Hedgerow
- Grasses & Perennials Mix Group
- Evergreen Shrub Planting
- Ornamental Planting Group
- Roses
- Spring Bulbs Mix
- Specimen Shrubs
- Proposed Tree Planting
- Existing Trees/ Vegetation to be retained
- Existing Trees to be removed

NOTE:
 Refer to drawing SEAM-ONE-ZZ-XX-DR-L-00002 for general planting arrangement
 Refer to drawing SEAM-ONE-ZZ-XX-DR-L-00003 for planting schedule
 For detail specifications refer to NBS Specification document
 SEAM-ONE-ZZ-XX-SP-L-00001 (028), (030), (031), (035)



REVISION C04	DATE 11.02.24	BY YL	CHECKED PA
Updated to the latest site plan			
REVISION C03	DATE 27.08.23	BY YL	CHECKED PA
Trees to car park changed			
REVISION C02	DATE 19.06.23	BY YL	CHECKED PA
Updated to the latest planting schedule			
REVISION C01	DATE 23.04.23	BY YL	CHECKED PA
For Stage 5 Issue			
REVISION P01	DATE 13.03.23	BY YL	CHECKED PA
First Issue			
CLIENT	Willmott Dixon		
PROJECT	The Seam, Barnsley		
TITLE	Detailed Planting Plan - Car Park		
DWG No.	SEAM-ONE-ZZ-XX-DR-L-00201	REV	C04
STATUS	CONSTRUCTION		
SCALE	1:200	@ A0	DATE 13.03.23 DRN BY YL

0 2 4 8 metres

ONE-ENVIRONMENTS