

Project 1

Partner for Contact:
Order No.:
Company:
Customer No.:

Date: 03.03.2021
Operator:



Operator
Telephone
Fax
e-Mail

Table of contents

Project 1

Project Cover	1
Table of contents	2
Luminaire parts list	3
Exterior Scene 1	
Planning data	4
Floor plan	5
Luminaires (layout plan)	6
Luminaires (coordinates list)	7
Sport Luminaires (Coordinates List)	8
Calculation points (results overview)	9
GR Observer (Results Overview)	10
3D Rendering	12
False Color Rendering	13
Exterior Surfaces	
General Sport Area 1 Calculation Grid (PA)	
Summary	14
Isolines (E, Perpendicular)	15
Greyscale (E, Perpendicular)	16
Value Chart (E, Perpendicular)	17

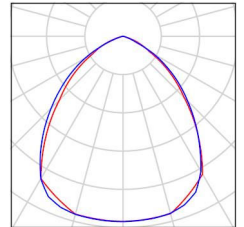


Operator
Telephone
Fax
e-Mail

Project 1 / Luminaire parts list

4 Pieces FLOODLIGHT-200W-90D
Article No.:
Luminous flux (Luminaire): 30405 lm
Luminous flux (Lamps): 30405 lm
Luminaire Wattage: 200.8 W
Luminaire classification according to CIE: 100
CIE flux code: 64 92 99 100 100
Fitting: 1 x LUMILEDS-5050 (Correction Factor 1.000).

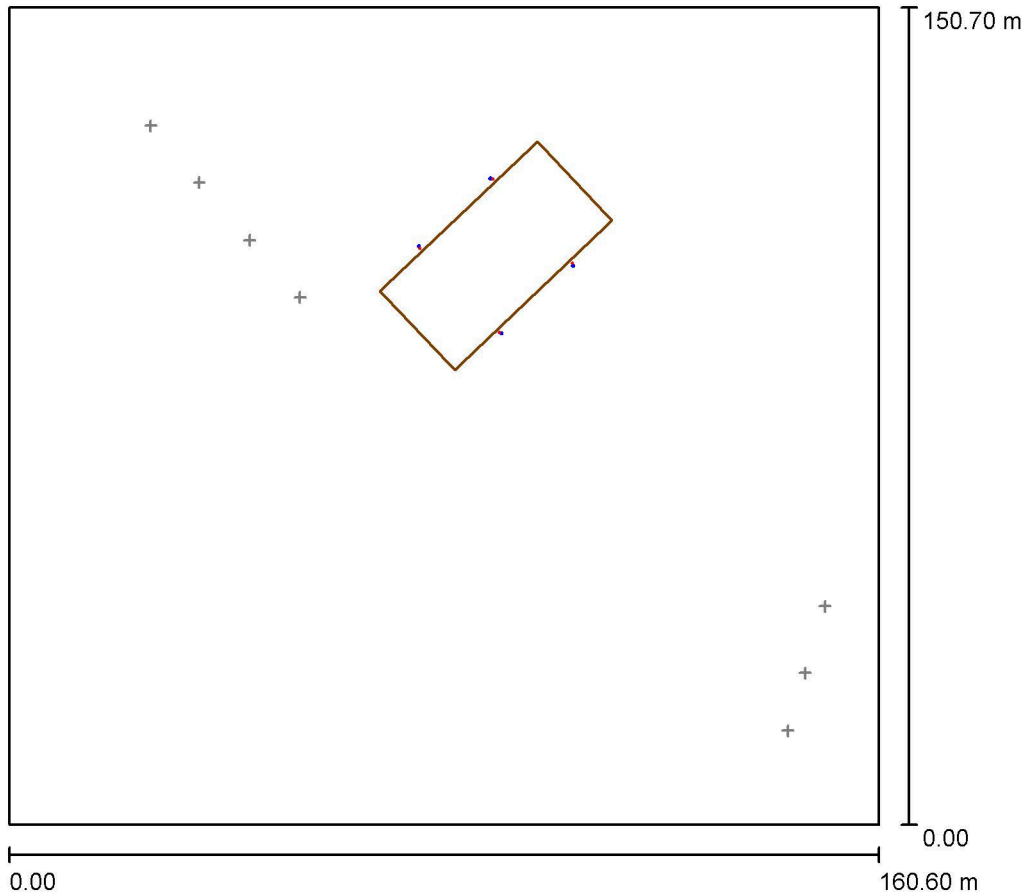
See our luminaire catalog for an image of the luminaire.





Operator
 Telephone
 Fax
 e-Mail

Exterior Scene 1 / Planning data



Light loss factor: 0.90, ULR (Upward Light Ratio): 1.0%

Scale 1:1397

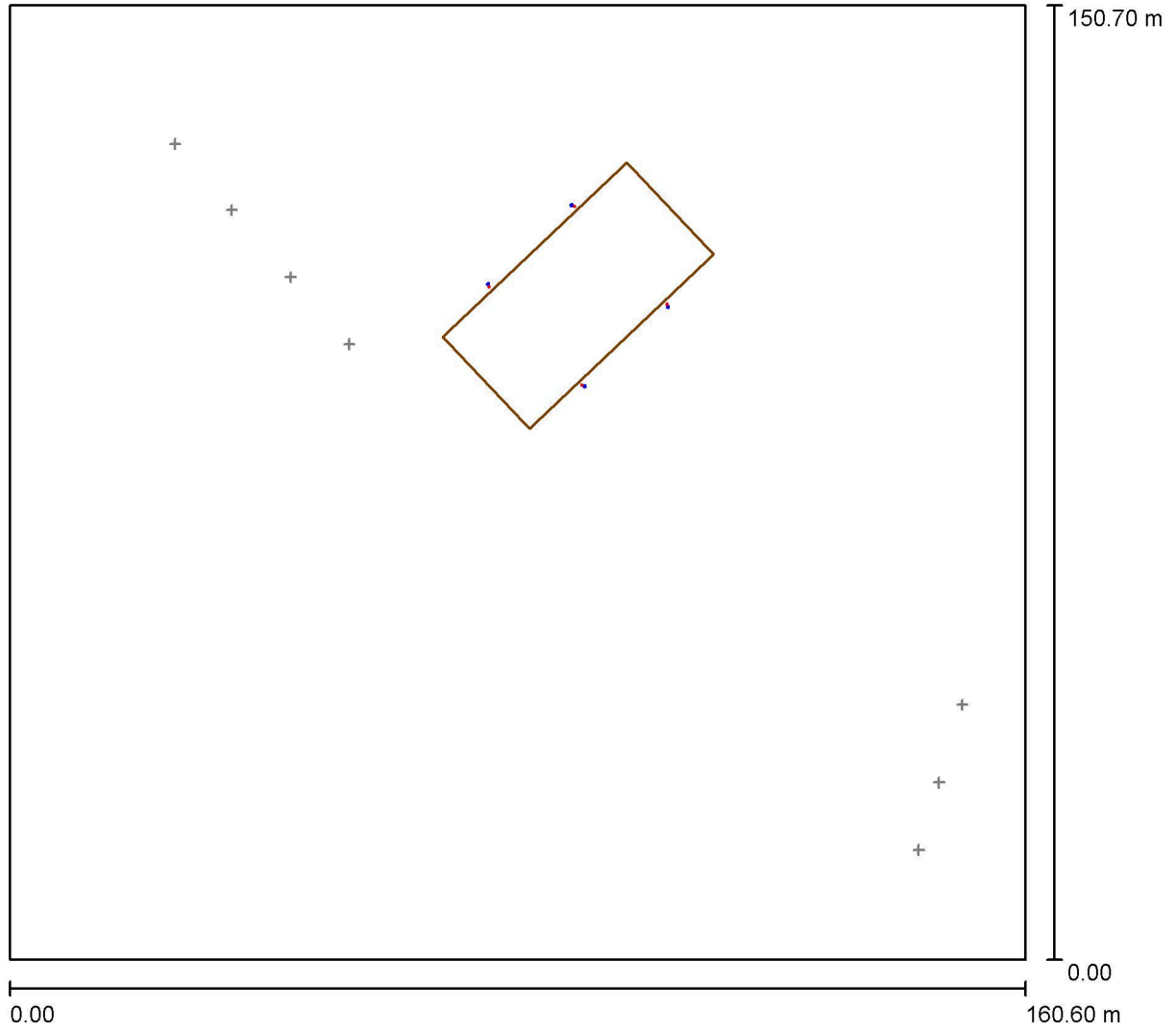
Luminaire Parts List

No.	Pieces	Designation (Correction Factor)	Φ (Luminaire) [lm]	Φ (Lamps) [lm]	P [W]
1	4	FLOODLIGHT-200W-90D (1.000)	30405	30405	200.8
			Total: 121619	Total: 121620	803.2



Operator
Telephone
Fax
e-Mail

Exterior Scene 1 / Floor plan

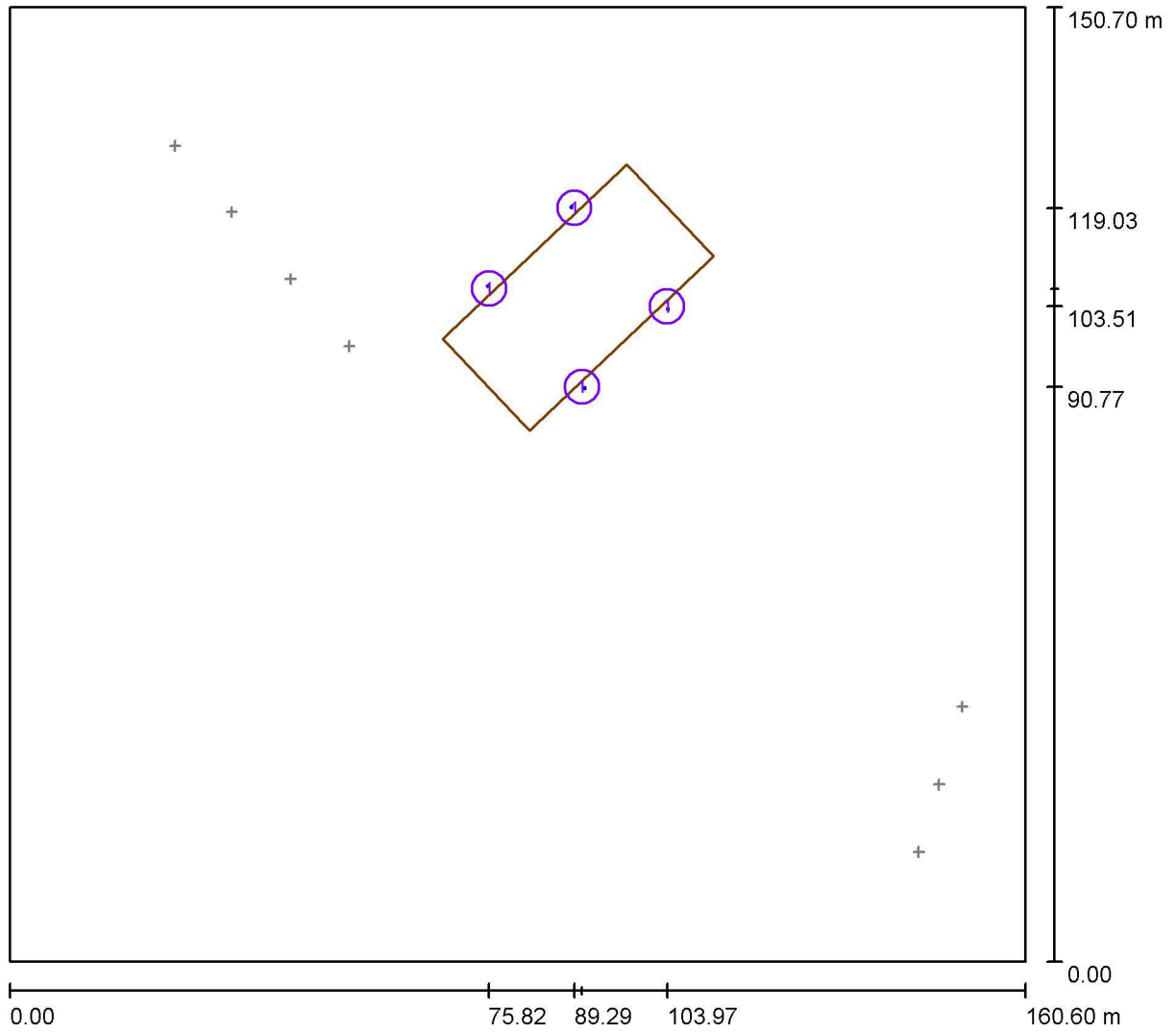


Scale 1 : 1149



Operator
Telephone
Fax
e-Mail

Exterior Scene 1 / Luminaires (layout plan)



Scale 1 : 1149

Luminaire Parts List

No.	Pieces	Designation
1	4	FLOODLIGHT-200W-90D

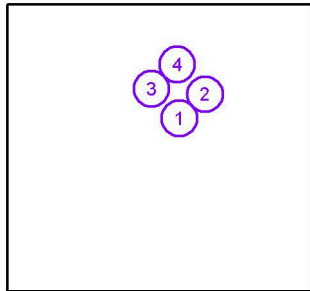


Operator
 Telephone
 Fax
 e-Mail

Exterior Scene 1 / Luminaires (coordinates list)

FLOODLIGHT-200W-90D

30405 lm, 200.8 W, 1 x 1 x LUMILEDS-5050 (Correction Factor 1.000).

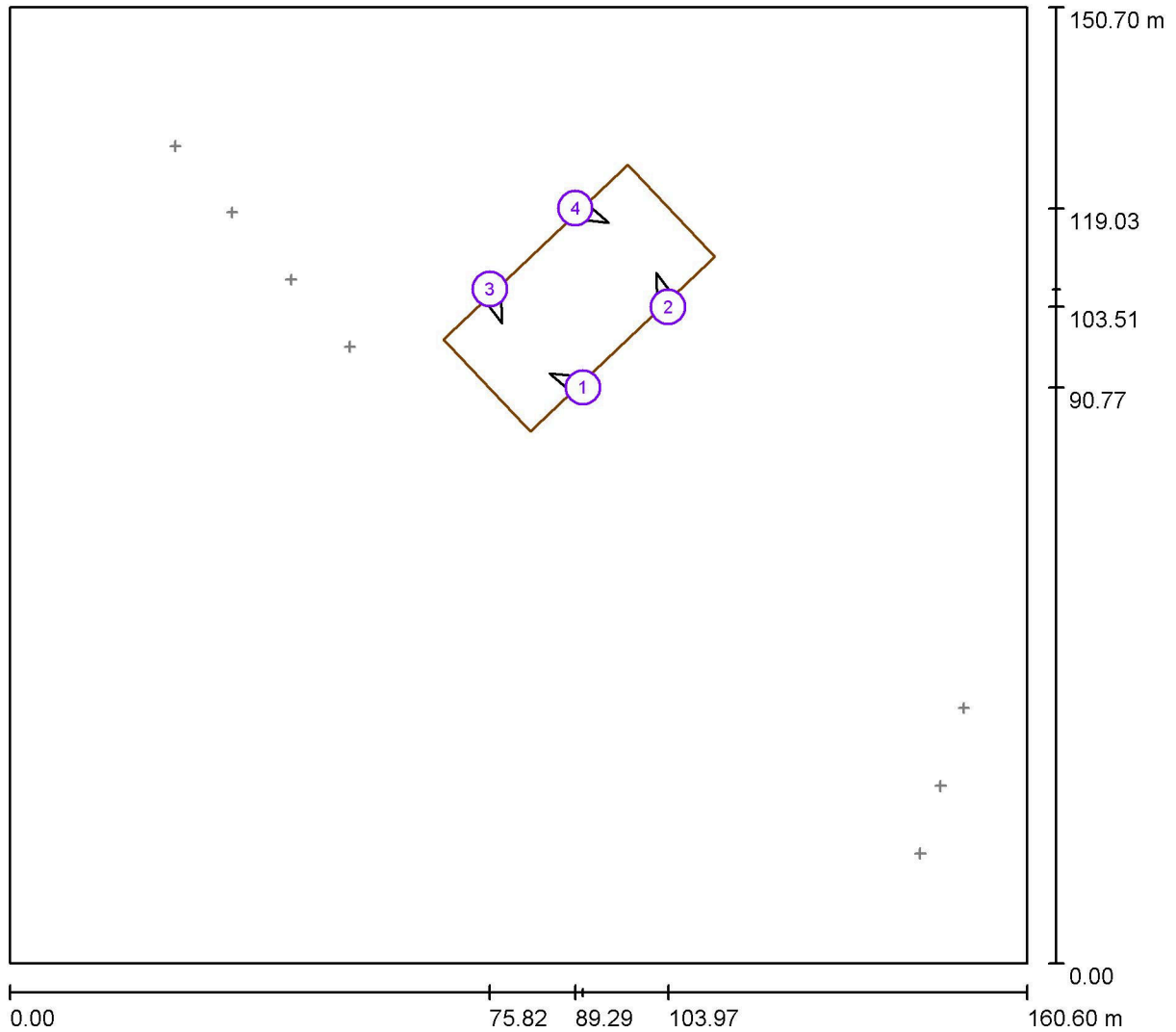


No.	Position [m]			Rotation [°]		
	X	Y	Z	X	Y	Z
1	90.503	90.771	12.000	0.0	-25.5	157.0
2	103.973	103.509	12.000	0.0	-25.5	109.8
3	75.824	106.293	12.000	0.0	-25.5	-70.2
4	89.294	119.031	12.000	0.0	-25.5	-23.0



Operator
Telephone
Fax
e-Mail

Exterior Scene 1 / Sport Luminaires (Coordinates List)



Scale 1 : 1149

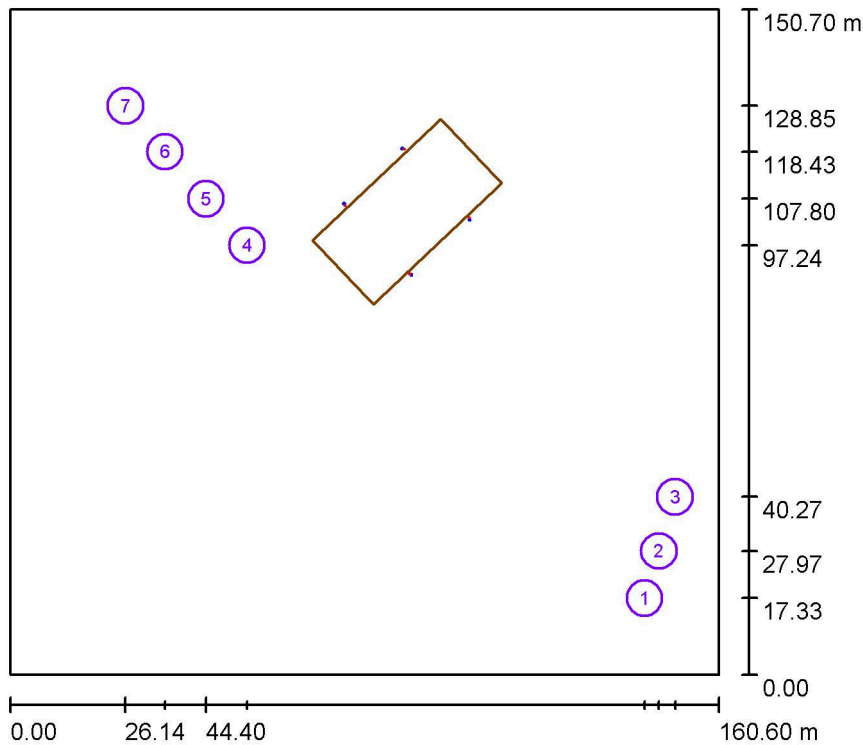
List of the Sport Luminaires

Luminaire	Index	Position [m]			Aiming Point [m]			Angle [°]	Alignment	Pole
		X	Y	Z	X	Y	Z			
FLOODLIGHT-200W-90D	1	90.503	90.771	12.000	85.229	93.012	0.000	64.5	(C 0, G 0)	/
FLOODLIGHT-200W-90D	2	103.973	103.509	12.000	102.030	108.899	0.000	64.5	(C 0, G 0)	/
FLOODLIGHT-200W-90D	3	75.824	106.293	12.000	77.767	100.903	0.000	64.5	(C 0, G 0)	/
FLOODLIGHT-200W-90D	4	89.294	119.031	12.000	94.568	116.790	0.000	64.5	(C 0, G 0)	/



Operator
Telephone
Fax
e-Mail

Exterior Scene 1 / Calculation points (results overview)



Scale 1 : 1715

Calculation Points List

No.	Designation	Type	Position [m]			Rotation [°]			Value [lx]
			X	Y	Z	X	Y	Z	
1	Horizontal Calculation Point 1	horizontal, normal	143.730	17.326	0.850	0.0	0.0	0.0	0.03
2	Horizontal Calculation Point 1	horizontal, normal	146.943	27.974	0.850	0.0	0.0	0.0	0.04
3	Horizontal Calculation Point 1	horizontal, normal	150.615	40.273	0.850	0.0	0.0	0.0	0.05
4	Horizontal Calculation Point 1	horizontal, normal	53.676	97.236	0.850	0.0	0.0	0.0	1.86
5	Horizontal Calculation Point 1	horizontal, normal	44.400	107.800	0.850	0.0	0.0	0.0	0.46
6	Horizontal Calculation Point 1	horizontal, normal	35.092	118.427	0.850	0.0	0.0	0.0	0.20
7	Horizontal Calculation Point 1	horizontal, normal	26.140	128.853	0.850	0.0	0.0	0.0	0.11

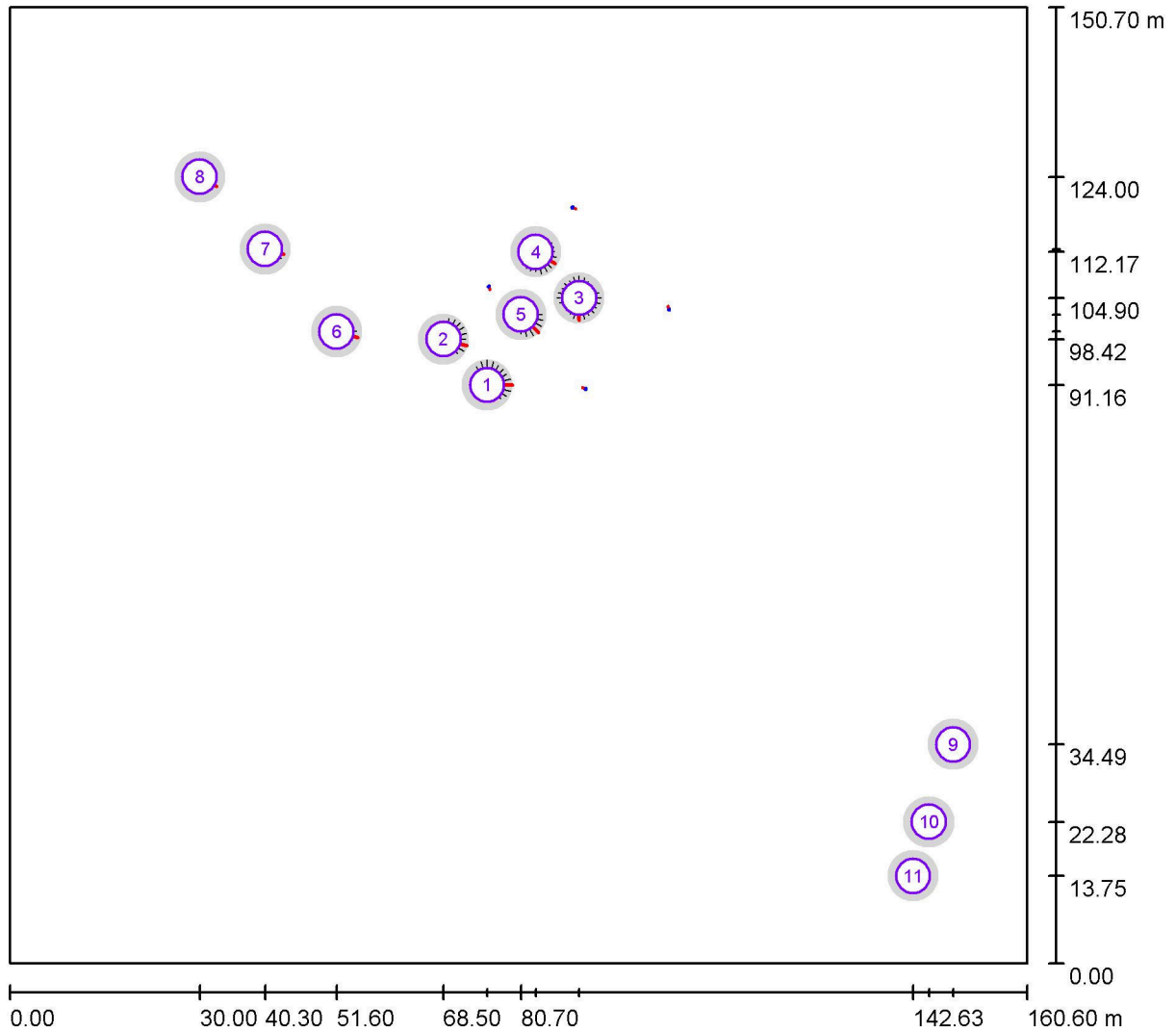
Summary of Results

Calculation Point Types	Quantity	Average [lx]	Min [lx]	Max [lx]	u0	E_{min} / E_{max}
Horizontal, normal	7	0.39	0.03	1.86	0.07	0.02



Operator
 Telephone
 Fax
 e-Mail

Exterior Scene 1 / GR Observer (Results Overview)



Scale 1 : 1149

GR Observerlist

No.	Designation	Position [m]			Start	End	Viewing sector [°]		Slope angle	Max
		X	Y	Z			Increment	Slope angle		
1	GR Observer 1	75.367	91.159	1.500	0.0	360.0	15.0	-2.0	48 ²⁾	
2	GR Observer 1	68.496	98.425	1.500	0.0	360.0	15.0	-2.0	46 ²⁾	
3	GR Observer 1	89.898	104.901	1.500	0.0	360.0	15.0	-2.0	43 ²⁾	
4	GR Observer 1	83.028	112.167	1.500	0.0	360.0	15.0	-2.0	43 ²⁾	



Operator
Telephone
Fax
e-Mail

Exterior Scene 1 / GR Observer (Results Overview)

GR Observerlist

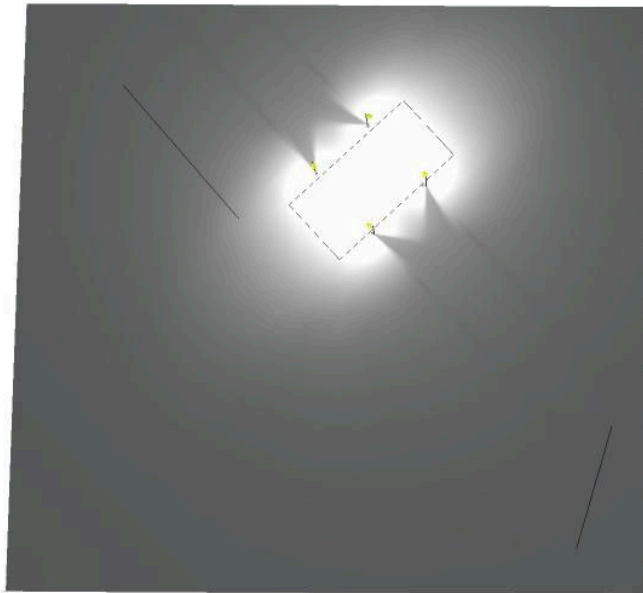
No.	Designation	Position [m]			Viewing sector [°]				Max
		X	Y	Z	Start	End	Increment	Slope angle	
5	GR Observer 1	80.700	102.300	1.500	0.0	360.0	15.0	-2.0	48 ²⁾
6	GR Observer 1	51.600	99.600	1.500	0.0	360.0	15.0	-2.0	42 ²⁾
7	GR Observer 1	40.300	112.600	1.500	0.0	360.0	15.0	-2.0	37 ²⁾
8	GR Observer 1	30.000	124.000	1.500	0.0	360.0	15.0	-2.0	37 ²⁾
9	GR Observer 1	148.962	34.491	1.500	0.0	360.0	15.0	-2.0	33 ²⁾
10	GR Observer 1	145.107	22.283	1.500	0.0	360.0	15.0	-2.0	30 ²⁾
11	GR Observer 1	142.629	13.746	1.500	0.0	360.0	15.0	-2.0	31 ²⁾

2) The calculated equivalent veil luminance of the environment is based on the assumption of a complete diffuse reflection behavior of the environment (acc. EN 12464-2).



Operator
Telephone
Fax
e-Mail

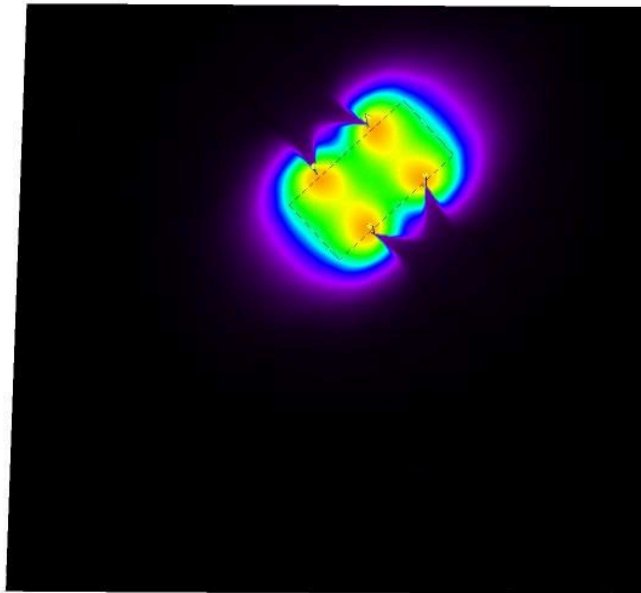
Exterior Scene 1 / 3D Rendering





Operator
Telephone
Fax
e-Mail

Exterior Scene 1 / False Color Rendering



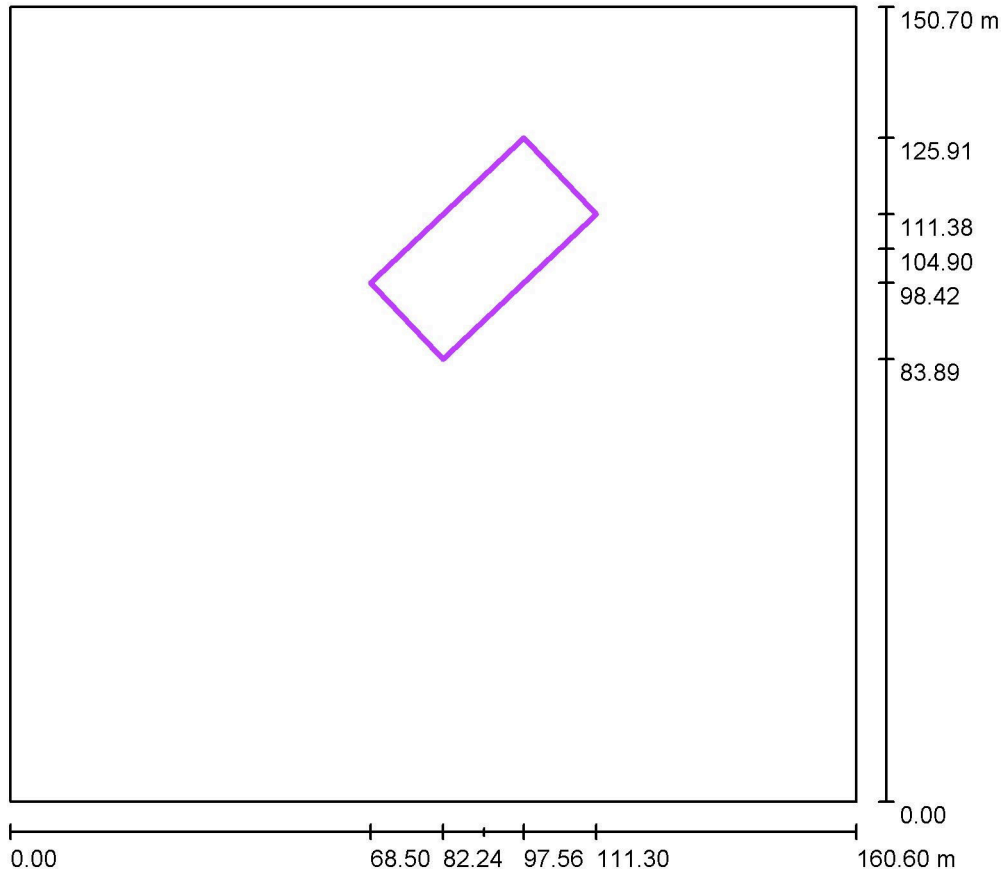
0 10 20 30 50 80 100 150 200

lx



Operator
Telephone
Fax
e-Mail

Exterior Scene 1 / General Sport Area 1 Calculation Grid (PA) / Summary



Scale 1 : 1437

Position: (89.898 m, 104.901 m, 0.000 m)
 Size: (40.000 m, 20.000 m)
 Rotation: (0.0°, 0.0°, 43.4°)
 Type: Normal, Grid: 15 x 7 Points
 Belongs to the following sport arena: General Sport Area 1

Results overview

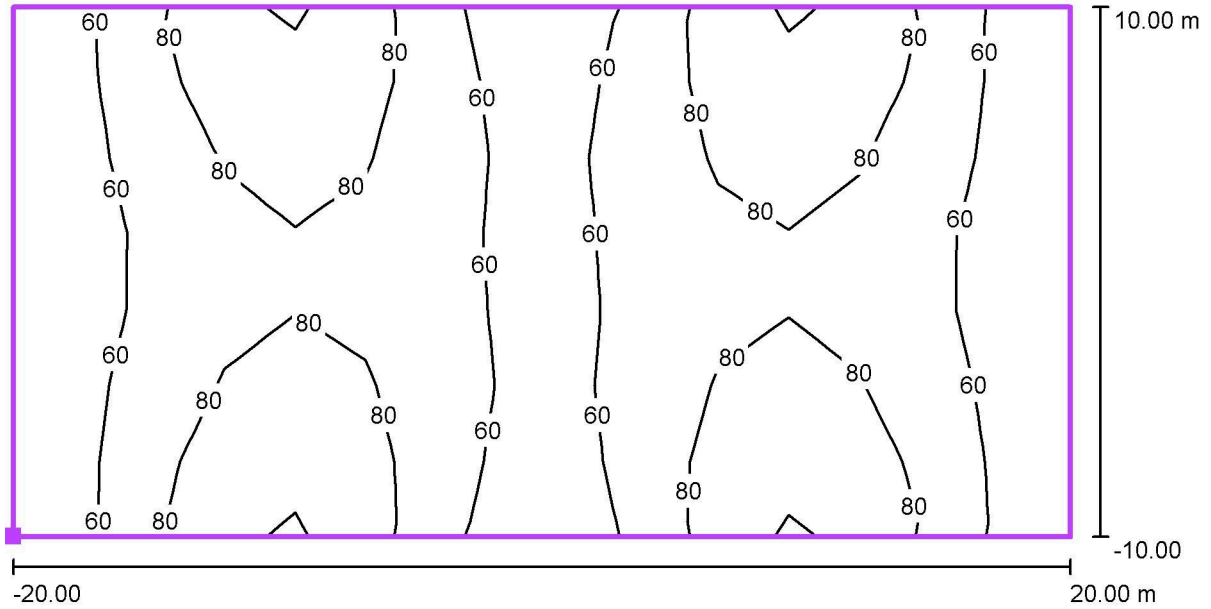
No.	Type	E_{av} [lx]	E_{min} [lx]	E_{max} [lx]	u0	E_{min} / E_{max}	$E_{h\ m} / E_m$	H [m]	Camera
1	perpendicular	70	44	100	0.63	0.45	/	0.000	/

$E_{h\ m} / E_m$ = Relationship between middle horizontal and vertical illuminance, H = Measuring Height



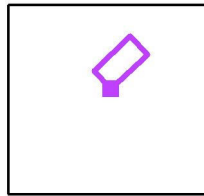
Operator
Telephone
Fax
e-Mail

Exterior Scene 1 / General Sport Area 1 Calculation Grid (PA) / Isolines (E, Perpendicular)



Values in Lux, Scale 1 : 286

Position of surface in external scene:
Marked point: (82.238 m, 83.893 m,
0.000 m)



Grid: 15 x 7 Points

E_{av} [lx]
70

E_{min} [lx]
44

E_{max} [lx]
100

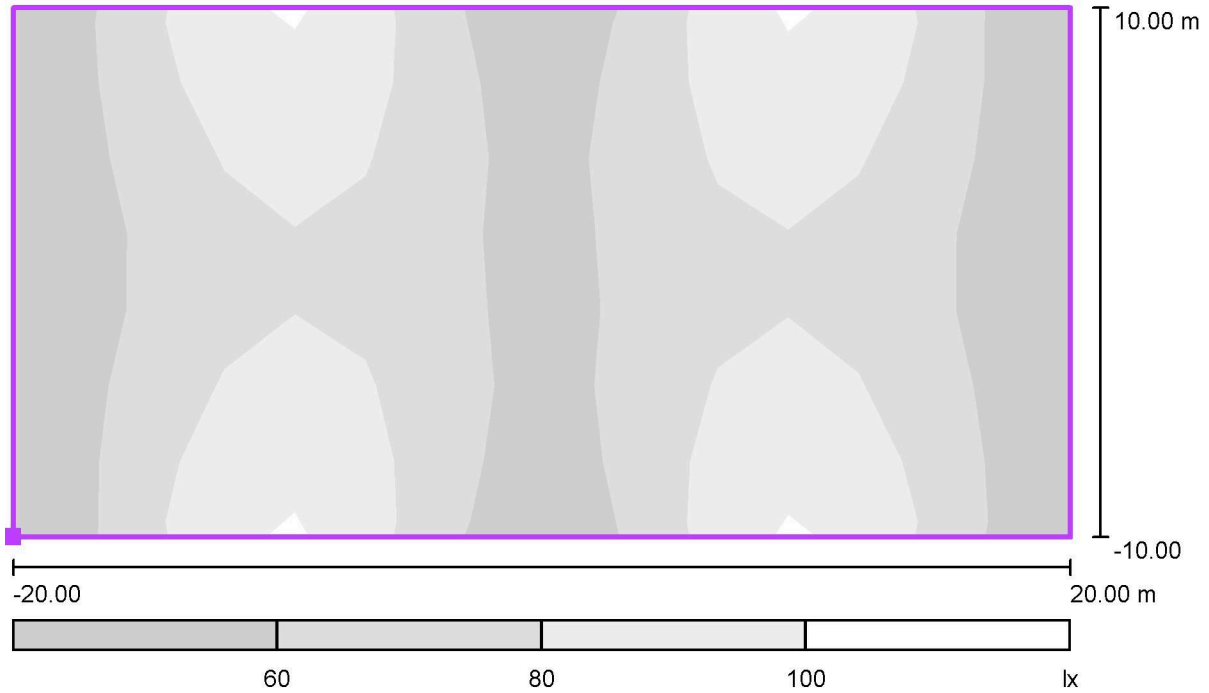
u_0
0.63

E_{min} / E_{max}
0.45



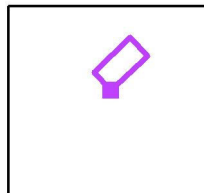
Operator
Telephone
Fax
e-Mail

Exterior Scene 1 / General Sport Area 1 Calculation Grid (PA) / Greyscale (E, Perpendicular)



Scale 1 : 286

Position of surface in external scene:
Marked point: (82.238 m, 83.893 m,
0.000 m)



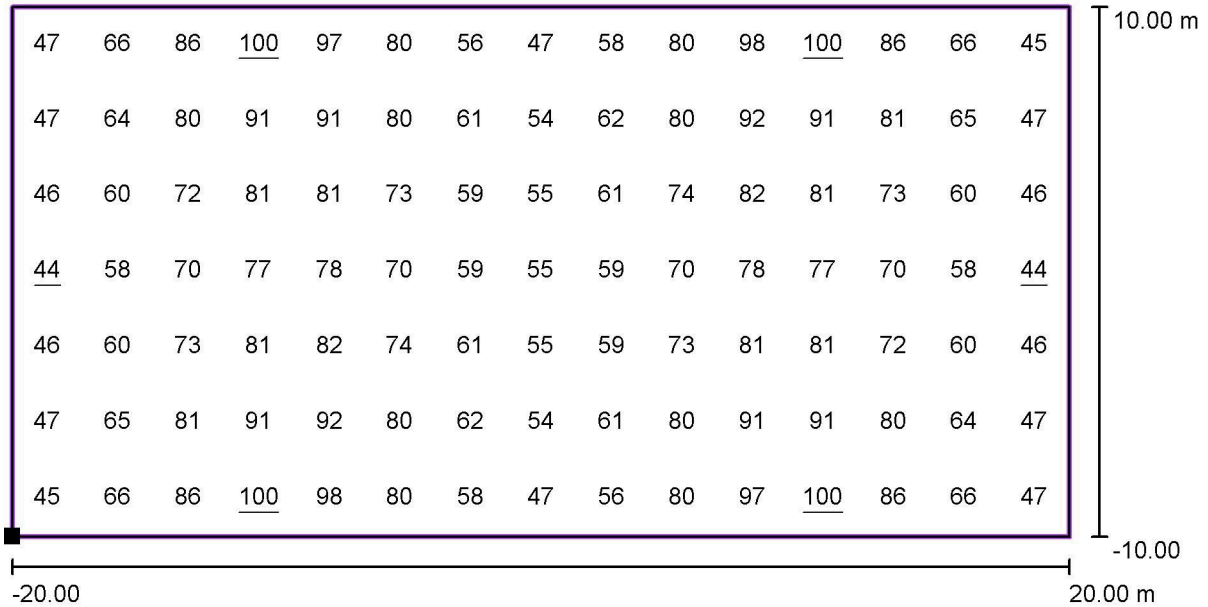
Grid: 15 x 7 Points

E_{av} [lx]	E_{min} [lx]	E_{max} [lx]	u0	E_{min} / E_{max}
70	44	100	0.63	0.45



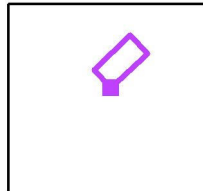
Operator
Telephone
Fax
e-Mail

Exterior Scene 1 / General Sport Area 1 Calculation Grid (PA) / Value Chart (E, Perpendicular)



Values in Lux, Scale 1 : 286

Position of surface in external scene:
Marked point: (82.238 m, 83.893 m, 0.000 m)



Grid: 15 x 7 Points

E_{av} [lx]
70

E_{min} [lx]
44

E_{max} [lx]
100

u_0
0.63

E_{min} / E_{max}
0.45