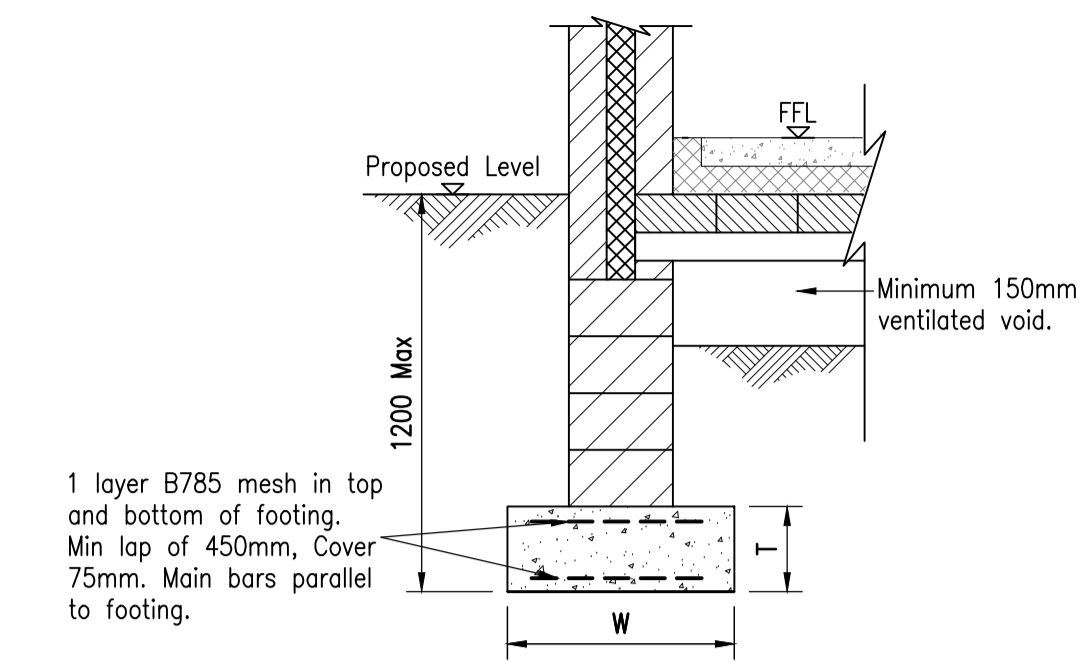
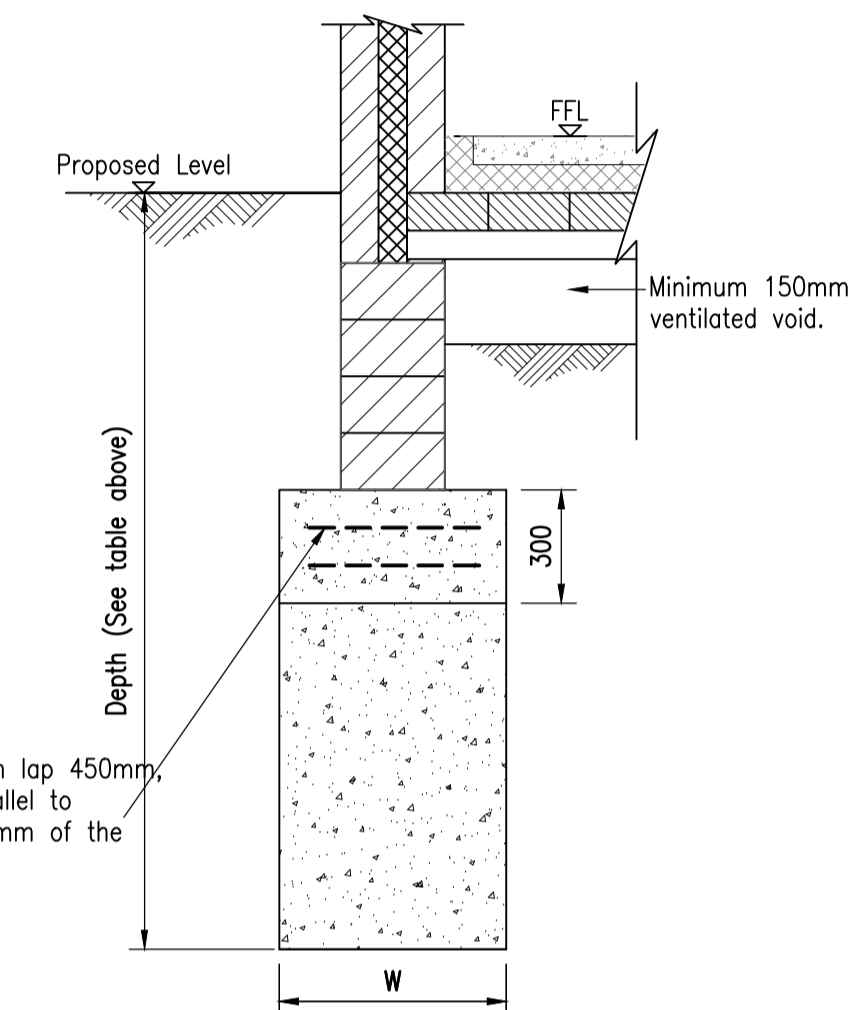


FOUNDATION SCHEDULE PLOTS 149G-181/182G

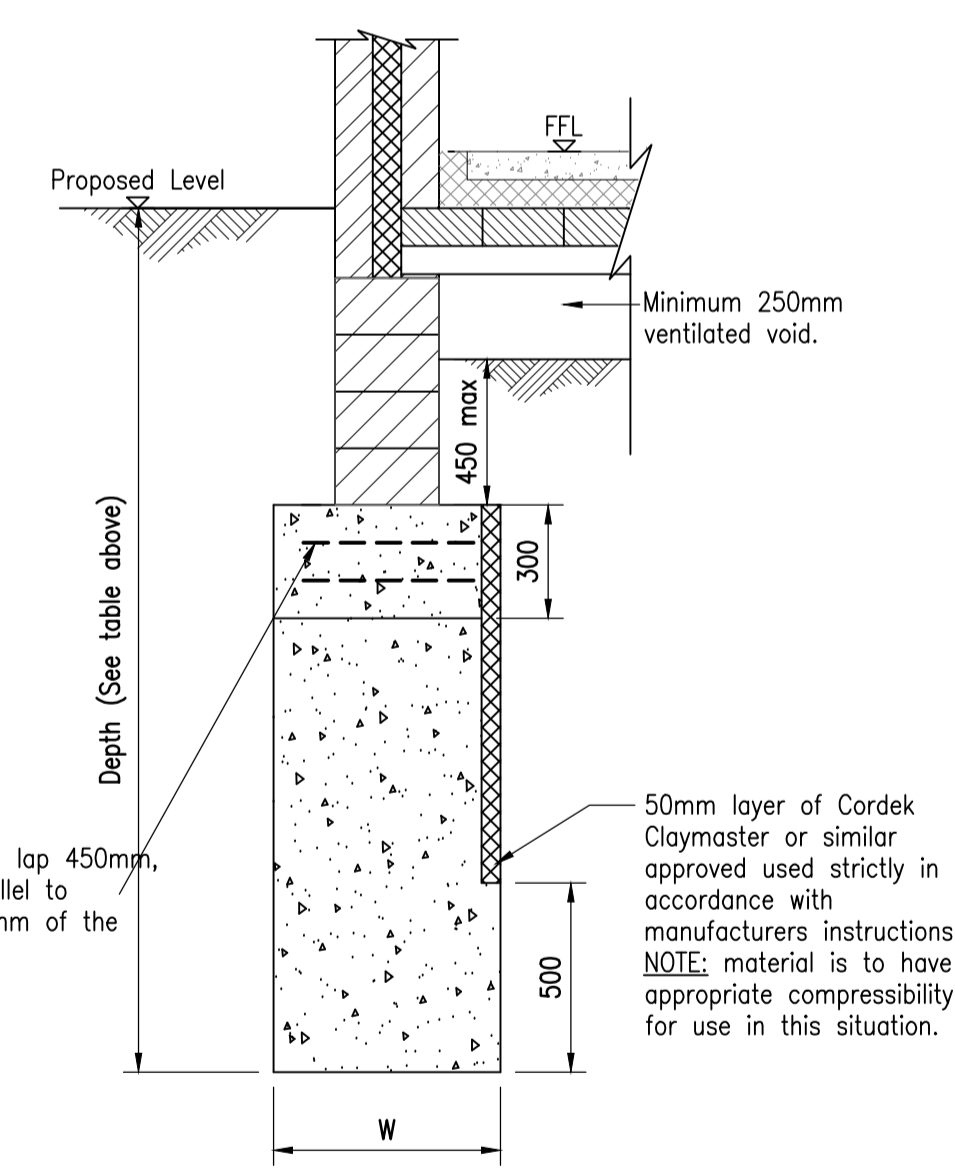
Plot No.	House Type	FFL (m AOD)	Lowest/Highest EGL (m AOD)	Lowest/Highest Formation Level (m AOD)	Shallowest/Deepest Anticipated Depth From FFL (mm)	Foundation Type (from FFL)	Width (mm) (except for party walls)	Minimum Thickness (mm)	Concrete Type	Anticipated Bearing Material	Factors Determining Depth	Anticipated Ground Floor Type	Anticipated Garage Floor Type	Heave Precautions Required	Grouting Required	Superstructure Precautions Required	Specific Note
149G	-	21.65	21.50-21.60	20.50-20.60	1050-1150	RSF	600	300	RC30	CLAY	ND/TREES	-	GB	NO	YES	No	-
149	302	21.74	21.20-21.40	18.70-20.50	1240-3040	RSF/RTF	600	300	RC30/GEN1	CLAY	ND	PCV	-	NO	YES	No	-
150	201	21.74	21.10-21.40	20.20-20.50	1240-1540	RSF/RTF	600	300	RC30/GEN1	CLAY	ND	PCV	-	NO	YES	No	-
151	310	21.72	21.10-21.35	20.20-20.45	1270-1520	RSF/RTF	600	300	RC30/GEN1	CLAY	ND	PCV	RS	NO	YES	No	-
152	302	21.54	20.95-21.10	20.05-20.20	1340-1490	RSF/RTF	600	450	RC30/GEN1	CLAY	ND	PCV	-	NO	YES	YES	-
153	309	21.54	21.10-21.55	20.20-20.49	1050-1340	RSF	600	450	RC30	CLAY	ND	PCV	RS	NO	YES	YES	-
154	307	21.99	21.55-21.90	20.44-20.64	1350-1550	RSF/RTF	600	450	RC30/GEN1	CLAY	ND/TREES	PCV	RS	NO	YES	YES	-
155	405	21.99	21.25-21.65	20.35-20.75	1240-1640	RSF/RTF	600	450	RC30/GEN1	CLAY	ND	PCV	RS	NO	YES	YES	-
156	309	21.50	21.10-21.40	20.20-20.45	1050-1300	RSF	600	450	RC30	CLAY	ND	GB	GB	NO	YES	YES	-
157	301	21.50	20.95-21.15	20.00-20.25	1250-1500	RSF/RTF	600	450	RC30/GEN1	CLAY	ND	PCV	-	NO	YES	YES	-
157/158G	-	20.90	20.85-21.10	19.95-20.00	900-950	RSF	600	450	RC30	CLAY	ND	-	GB	NO	YES	YES	-
158	202	21.05	20.80-20.85	19.90-19.95	1100-1150	RSF	600	450	RC30	CLAY	ND	GB	-	NO	YES	YES	-
159	202	21.05	20.50-20.80	19.60-19.90	1100-1450	RSF/RTF	600	450	RC30/GEN1	CLAY	ND	PCV	-	NO	YES	YES	-
159/160G	-	20.60	20.40-20.65	19.50-19.70	900-1100	RSF	600	450	RC30	CLAY	ND	-	GB	NO	YES	YES	B
160	301	20.75	20.30-20.55	19.40-19.55	1200-1350	RSF	600	450	RC30	CLAY	ND/MS	PCV	-	NO	YES	YES	-
161	201	20.75	20.20-20.45	19.30-19.55	1200-1450	RSF/RTF	600	450	RC30/GEN1	CLAY	ND/MS	PCV	-	NO	YES	YES	-
162G	-	20.30	20.10-20.20	19.20-19.30	1000-1100	RSF	600	450	RC30	CLAY	ND	-	GB	NO	YES	YES	-
162	304	20.45	20.00-20.15	17.45-19.25	1200-3000	RSF/RTF	600	450	RC30/GEN1	CLAY	ND/MS	PCV	-	NO	YES	YES	-
163	307	20.15	19.60-20.05	18.70-19.10	1050-1450	RSF/RTF	600	450	RC30/GEN1	CLAY	ND	PCV	RS	NO	YES	YES	-
164	302	20.00	19.25-19.50	18.35-18.60	1400-1650	RTF	600	450	RC30/GEN1	CLAY	ND	PCV	-	NO	YES	YES	-
165	201	20.00	19.15-19.45	17.65-18.55	1450-2350	RTF	600	450	RC30/GEN1	CLAY	ND/MG	PCV	-	NO	YES	YES	-
165/166G	-	19.70	19.15-19.35	18.25-18.40	1250-1450	RSF/RTF	600	450	RC30/GEN1	CLAY	ND	-	RS	NO	YES	YES	-
166	301	19.85	18.95-19.25	17.55-18.35	1500-2300	RTF	600	450	RC30/GEN1	CLAY	ND/MG	PCV	-	NO	YES	YES	-
167	301	19.85	18.90-19.15	18.00-18.25	1600-1800	RTF	600	450	RC30/GEN1	CLAY	ND	PCV	-	NO	YES	YES	A
167G	-	19.70	18.90-19.00	18.00-18.10	1600-1700	RTF	600	450	RC30/GEN1	CLAY	ND	-	RS	NO	YES	YES	-
168	309	19.95	18.50-18.95	17.10-17.90	2050-2850	RTF/ETF	600	450	RC30/GEN1	CLAY/MUDSTONE	ND/TREES	PCV	RS	NO	YES	YES	-
169	311	19.95	18.70-18.85	17.10-17.90	2050-2850	RTF/ETF	600	450	RC30/GEN1	CLAY/MUDSTONE	ND/TREES	PCV	-	NO	YES	YES	-
169/170G	-	19.65	18.80-19.05	16.80-17.85	1800-2850	RTF/ETF	600	450	RC30/GEN1	CLAY/MUDSTONE	TREES	-	PCVH	YES	YES	YES	-
170	311	19.80	18.90-19.00	17.55-18.10	1700-2250	RTF	600	450	RC30/GEN1	CLAY/MUDSTONE	ND/TREES	PCV	-	NO	YES	YES	-
171	311	19.80	19.00-19.05	17.75-18.15	1650-2050	RTF	600	450	RC30/GEN1	CLAY/MUDSTONE	ND/TREES	PCV	-	NO	YES	YES	-
171/172G	-	19.65	19.00-19.10	17.35-18.20	1450-2300	RTF	600	450	RC30/GEN1	CLAY/MUDSTONE	ND/TREES	-	PCVH	YES	YES	YES	-
172	303	19.95	19.10-19.20	17.60-18.30	1650-2350	RTF	600	450	RC30	CLAY/MUDSTONE	ND/TREES	PCV	-	NO	YES	YES	-
173	303	19.95	19.20-19.45	17.75-18.55	1400-2200	RTF	600	450	RC30/GEN1	CLAY/MUDSTONE	ND/TREES	PCV	-	NO	YES	YES	-
173/174G	-	19.80	19.30-19.55	18.40-18.65	1150-1400	RSF/RTF	600	450	RC30/GEN1	CLAY/MUDSTONE	ND/TREES	-	GB	NO	YES	YES	-
174	201	20.55	19.50-19.75	18.60-18.85	1700-1950	RTF	600	450	RC30/GEN1	CLAY/MUDSTONE	ND/TREES	PCV	-	NO	YES	YES	-
175	311	20.55	19.70-19.90	18.80-19.00	1550-1750	RTF	600	450	RC30/GEN1	CLAY/MUDSTONE	ND/TREES	PCV	-	NO	YES	YES	-
175/176G	-	20.40	19.90-20.00	17.90-18.90	1500-2500	RTF	600	450	RC30/GEN1	CLAY/MUDSTONE	TREES	-	PCVH	YES	YES	YES	-
176	202	20.55	20.00-20.10	18.50-19.20	1350-2050	RSF/RTF	600	450	RC30/GEN1	CLAY/MUDSTONE	ND/TREES	PCV	-	NO	YES	YES	-
177	202	20.55	20.10-20.20	18.40-19.30	1250-2150	RSF/RTF	600	450	RC30/GEN1	CLAY/MUDSTONE	ND/TREES/CROWN HOLE	PCVH	-	YES	YES	YES	-
177/178G	-	20.40	20.20-20.60	17.85-18.40	2000-2550	RTF	600	450	RC30/GEN1	CLAY/MUDSTONE	TREES	-	PCVH	YES	YES	YES	-
178	311	20.70	20.20-20.70	17.85-19.00	1700-2850	RTF/ETF	600	450	RC30/GEN1	CLAY/MUDSTONE	TREES	PCVH	-	YES	YES	YES	-
179	201	20.70	20.40-20.75	18.00-18.80	1900-2700	RTF/ETF	600	450	RC30/GEN1	CLAY/MUDSTONE	TREES	PCVH	-	YES	YES	YES	-
179/180G	-	20.55	20.65-21.00	18.05-18.60	1950-2500	RTF	600	450	RC30/GEN1	CLAY/MUDSTONE	TREES	-	PCVH	YES	YES	YES	-
180	311	21.15	20.60-21.05	18.40-20.05	1100-2750	RSF/RTF/ETF	600	450	RC30/GEN1	CLAY/MUDSTONE	ND/TREES	PCVH	-	YES	YES	YES	-
181	311	21.15	20.95-21.10	18.90-20.10	1050-2250	RSF/RTF	600	450	RC30/GEN1	CLAY/MUDSTONE	ND/TREES	PCVH	-	YES	YES	YES	-
181/182G	-	21.00	21.10-21.20	18.60-19.80	1200-2400	RSF/RTF	600	450	RC30/GEN1	CLAY	TREES	-	PCVH	YES	YES	YES	B



REINFORCED STRIP FOOTING



REINFORCED TRENCH FILL FOOTING



REINFORCED TRENCH FILL FOOTING WITH HEAVE PRECAUTIONS

House Type	Width (mm)
201-302	600
302-309	750
301-309	750
202-202	600
201-301	600
301-301	600
309-311	750
311-311	750
303-303	600
201-311	750

Information within this drawing is not necessarily produced to scale. Always use figured dimensions and co-ordinates - if in doubt, ask.

NOTES

- This drawing is to be read in conjunction with all relevant Eastwood & Partners drawings prefixed 34041 and Architect's drawings.
- The external ground level has been taken as 150mm below FFL for houses and equal to FFL for garages. FFL has been obtained from James Eaton Design Ltd, Engineering Layout, Drawing No 16/660/7736E.
- Footings must be founded on undisturbed natural ground at a minimum depth of 900mm below EGL or FGL whichever is lower on clay (deeper near trees).
- Sulphate precautions are not required on this site. However, if coal is found, concrete mix should be FND2.
- No radon or ground gas precautions are required on this site.
- Spread foundations have been designed using a safe bearing capacity of 125kN/m<sup>2</sup> on clay.
- All future trees should be of a type species and be positioned so as to not affect proposed footings.
- Foundations must be deepened to a depth which will not surcharge nearby drains and footings.
- Provide stainless steel masonry reinforcement (Brickforce or similar approved) in the superstructure. This should be continuous around the house and there should be two layers in the inner and outer leaves above the lower storey windows and below the upper storey windows (eight layers in total).
- Water ingress expected when bedrock is reached. Excavations should not be left open for significant length of time.

PLOT SPECIFIC NOTE

- Trial pit or borehole in vicinity of plot.
- Foundation to be taken below the invert level of the drain when it passes through the foundation.

ABBREVIATIONS:

- ND Normal Depth
- MS Mineshaft
- MG Made Ground
- RSF Reinforced Strip Footing
- RTF Reinforced Trench Fill
- ETF Engineered Trench Fill
- PCV Precast concrete floor with 150mm void depth
- PCVH Precast concrete floor with 250mm void depth

REV	DESCRIPTION	SIG	CHK	DATE
G	Plots 168-181 & 196-209 updated to suit new plot positions. Note 10 added.	JL	KE	08.01.21
F	Plot 149 formation levels updated.	JL	KE	12.08.20
E	Updated to suit latest external works.	JL	KE	27.11.19
D	Plots 160-162 updated due to position of mine entries. Plot 177 footing deepened to found on rock in vicinity of crown hole.	CB	KE	19.07.18
C	Note 9 added.	CB	CAT	28.06.17
B	Note 8 & specific note B added.	JL	KE	05.01.17
A	First Issue.			

GLEESON DEVELOPMENTS LTD

PHASE 2 BARNBURGH LANE, GOLDTHORPE

FOUNDATION SCHEDULE SHEET 1 OF 2

**Eastwood & Partners**  
CONSULTING ENGINEERS

St. Andrew's House  
23 Kingfield Road  
Sheffield  
S11 9AS  
Tel 0114 255 4554  
Fax 0114 255 4330

mail@eastwoodandpartners.com  
www.eastwoodandpartners.com

SCALE WHEN PLOTTED AT A1		DRAWING STATUS	
1:20		PRELIMINARY	
DRAWN	CHECKED	DATE	DRAWING NUMBER
JRB	KE	25.11.16	34041/021
REV			
			G