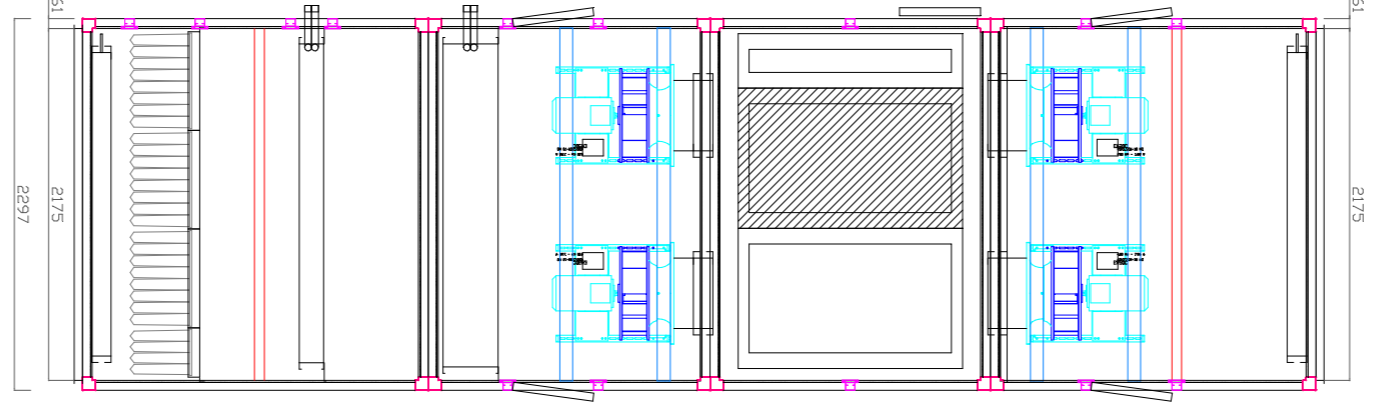
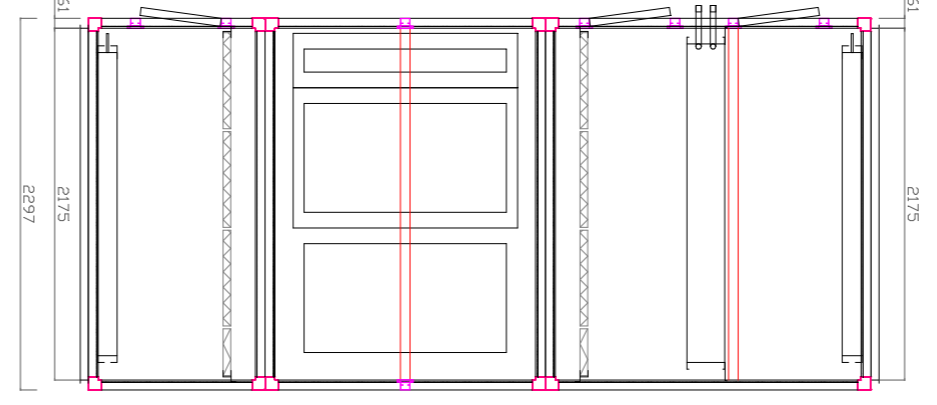
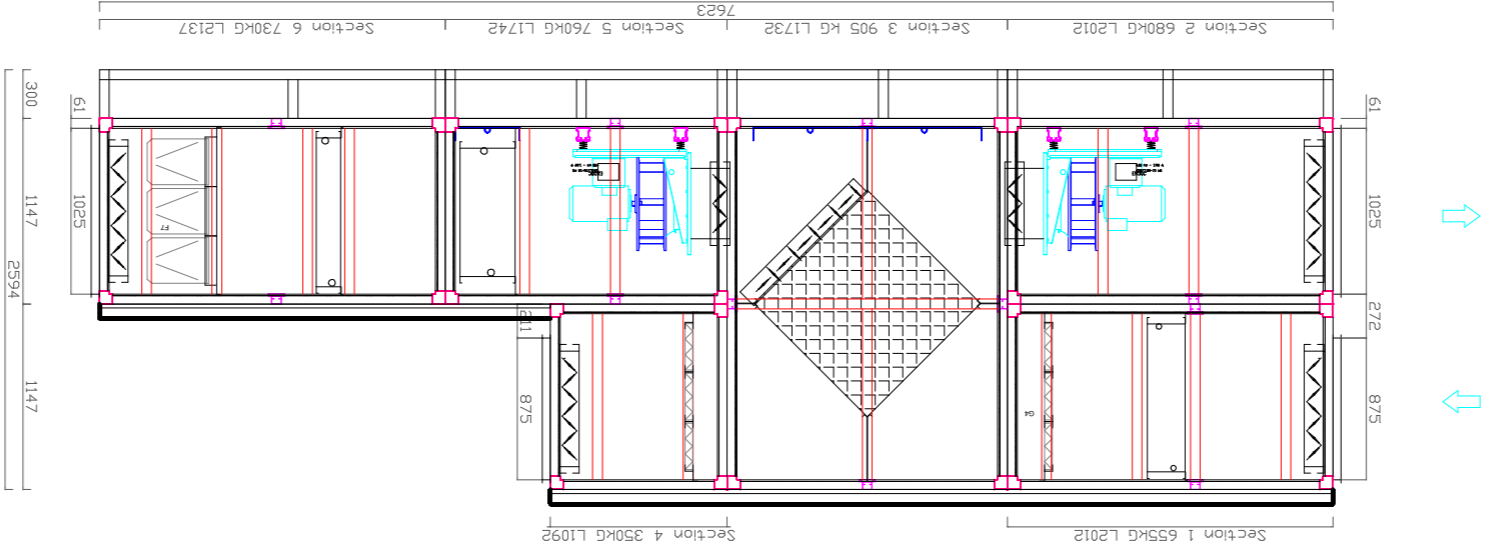


ABSORBED POWER (kW)	4.05	SUPPLY
	2.93	EXTRACT
AHU SPECIFIC FAN POWER		
FRAMEWORK	60 MM	
EXTERIOR FINISH	PLASTISOL - GOOSEWING GREY 0.9 MM	
INTERIOR FINISH	GALVANISED STEEL 0.9 MM	
WEIGHT (KGS)	4080	
AHU SFPV (kW/m <sup>3</sup> /s)	0.89	
	0.77	

ECODESIGN	
NOMINAL FLOW RATE (m <sup>3</sup> /s)	3.01
TYPE OF DRIVE	SPEED CONTROL PROVIDED BY OTHERS
EFFECTIVE ELECTRIC POWER INPUT (kW)	4.0
FACE VELOCITY (m/s)	1.31
NOMINAL EXTERNAL PRESSURE (Pa)	210
INTERNAL PRESSURE DROP OF VENTILATION COMPONENTS (Pa)	232
STATIC EFFICIENCY OF FAN (%)	61.8
EFFICIENCY OF THE FILTERS	F7
TYPELOGY	NRVU;BVU
SFPint / SFPint LIMIT 2018 [W/(m <sup>3</sup> /s)]	659 / 665
TYPE OF HRS	PLATE HEAT RECOVERY UNIT
THERMAL EFFICIENCY OF HEAT RECOVERY (%)	73.5
NOMINAL FLOW RATE (m <sup>3</sup> /s)	2.97
MAX. EXTERNAL LEAKAGE RATE (%)	L2
MAX. INTERNAL LEAKAGE RATE (%)	NA
INTERNET ADDRESS FOR DISASSEMBLY INSTRUCTIONS: WWW.MANSFIELDPOLLARD.CO.UK/DOCUMENTS/MP-AHU-RECYCING-INSTRUCTIONS.PDF	
CTRL + CLICK HERE TO ACTIVATE LINK	
ECODESIGN COMPLIANCE 2018	
IF THE UNIT INCLUDES A FILTER SECTION, THE AHU MUST BE EQUIPPED WITH A VISUAL SIGNAL OR ALARM IN THE CONTROL SYSTEM WHICH IS ACTIVATED IF THE PRESSURE DROP ACROSS THE FILTER EXCEEDS THE MAXIMUM ALLOWED FINAL PRESSURE DROP.	



IF IN DOUBTS ASK  
DO NOT SCALE OFF DRAWING

REPORT ANY DISCREPANCIES BACK TO DESIGN ENGINEER  
MANSFIELD POLLARD & CO. LIMITED.

ALL RIGHTS RESERVED. MANSFIELD POLLARD AND ITS GROUP COMPANIES ASSERT (UNLESS OTHERWISE AGREED IN WRITING) THEIR RIGHTS UNDER §.77 TO 89 OF THE COPYRIGHT, DESIGNS & PATENTS ACT 1988.

THIS UNIT IS NOT DESIGNED TO RUN WITH ANY UNIT AND/OR SYSTEM ADVISE THAT ANY CONTROL SYSTEM USED IS CONFIGURED TO PREVENT OPERATION IN THIS STATE.  
CAN CAUSE CASING AND INTERNAL COMPONENT FAILURE. WE STRONGLY DANGERS CLOSED SUCH THAT AIR FLOW IS SUBSTANTIALLY RESTRICTED.

NOTES

CONNECTION SIZES:  
LONGEST SIDE  
FLANGE  
BOLT SIZE

UP TO 800 20mm DOBY  
801 TO 1600 30mm DOBY  
1601 TO 3000 40mm DOBY

M8x20mm  
M10x20mm

SEE SEPARATE REVISION LOG DOCUMENT (TO BE ISSUED WITH DRAWING)

CUSTOMER: GEOFF WALKER COMPLETE PIPEWORK SERVICES LTD  
SITE: AHU01  
TITLE: AHU REF. AHU01

ENGINEER: DATE: 25-03-2020  
DRAWING NUMBER: SCALE: NTS  
SHEET SIZE: A1  
ORDER No: 1  
CHECKED: