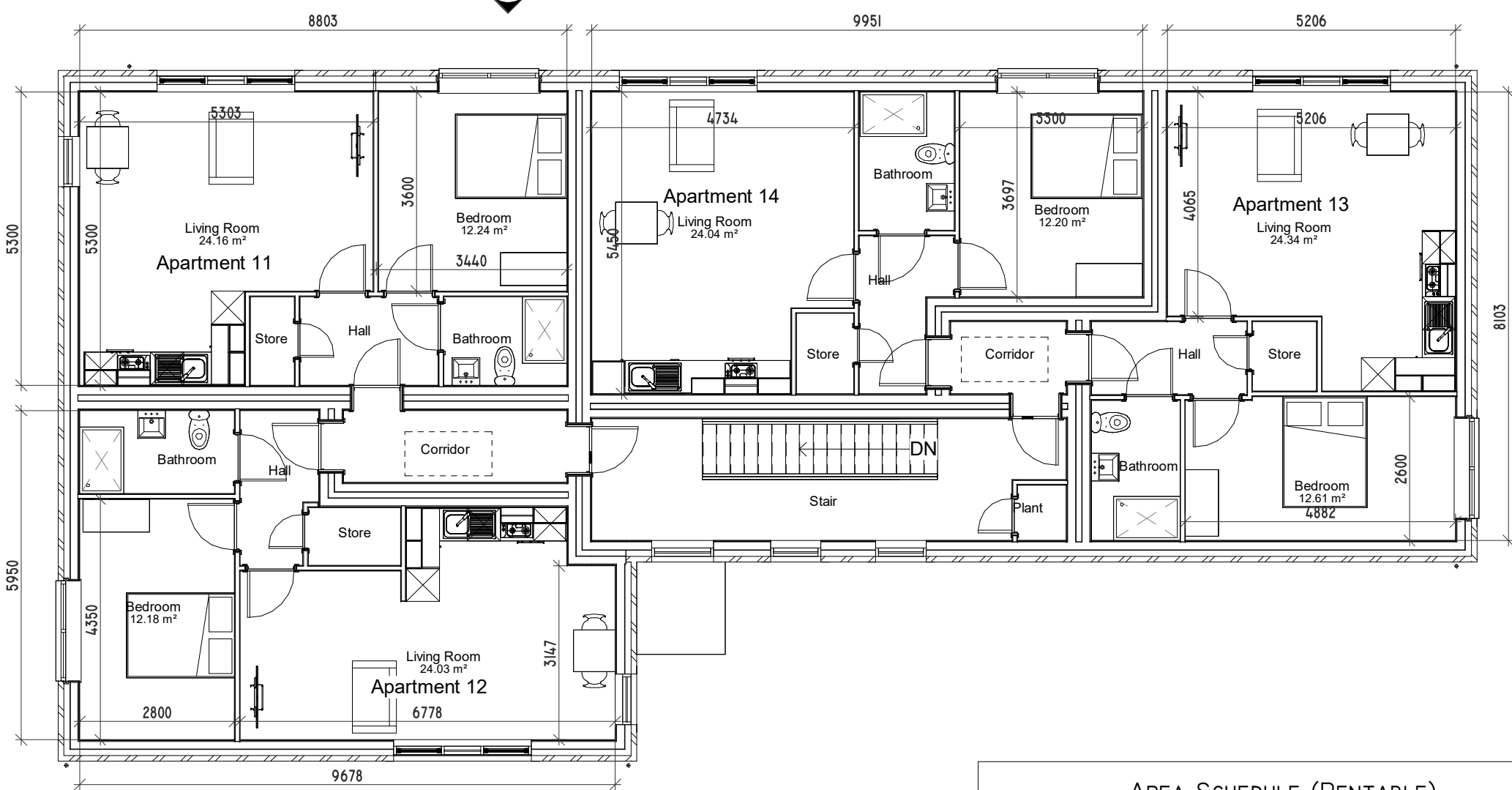


PROPOSED GROUND FLOOR PLAN

1 : 100



PROPOSED FIRST FLOOR PLAN

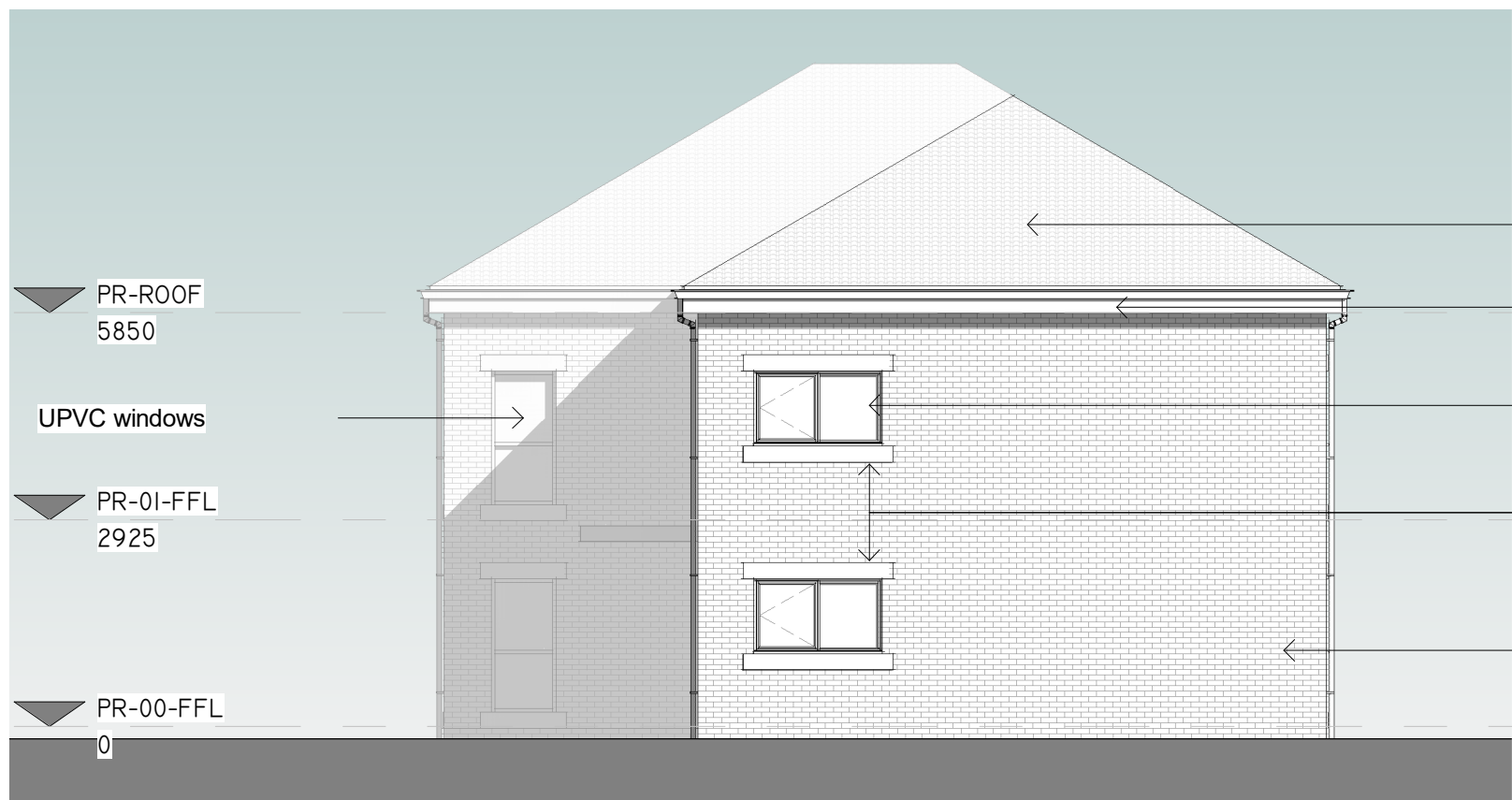
1 : 100

AREA SCHEDULE (RENTABLE)			
LEVEL	NAME	AREA	SQFT
PR-00-FFL	APARTMENT 7	46.65 M ²	502 FT ²
PR-00-FFL	APARTMENT 8	47.27 M ²	509 FT ²
PR-00-FFL	APARTMENT 9	47.36 M ²	510 FT ²
PR-00-FFL	APARTMENT 10	47.62 M ²	513 FT ²
PR-01-FFL	APARTMENT 11	46.64 M ²	502 FT ²
PR-01-FFL	APARTMENT 12	47.26 M ²	509 FT ²
PR-01-FFL	APARTMENT 13	47.36 M ²	510 FT ²
PR-01-FFL	APARTMENT 14	47.62 M ²	513 FT ²
		377.78 M ²	4066 FT ²



PROPOSED SOUTH FACING ELEVATION

1 : 100



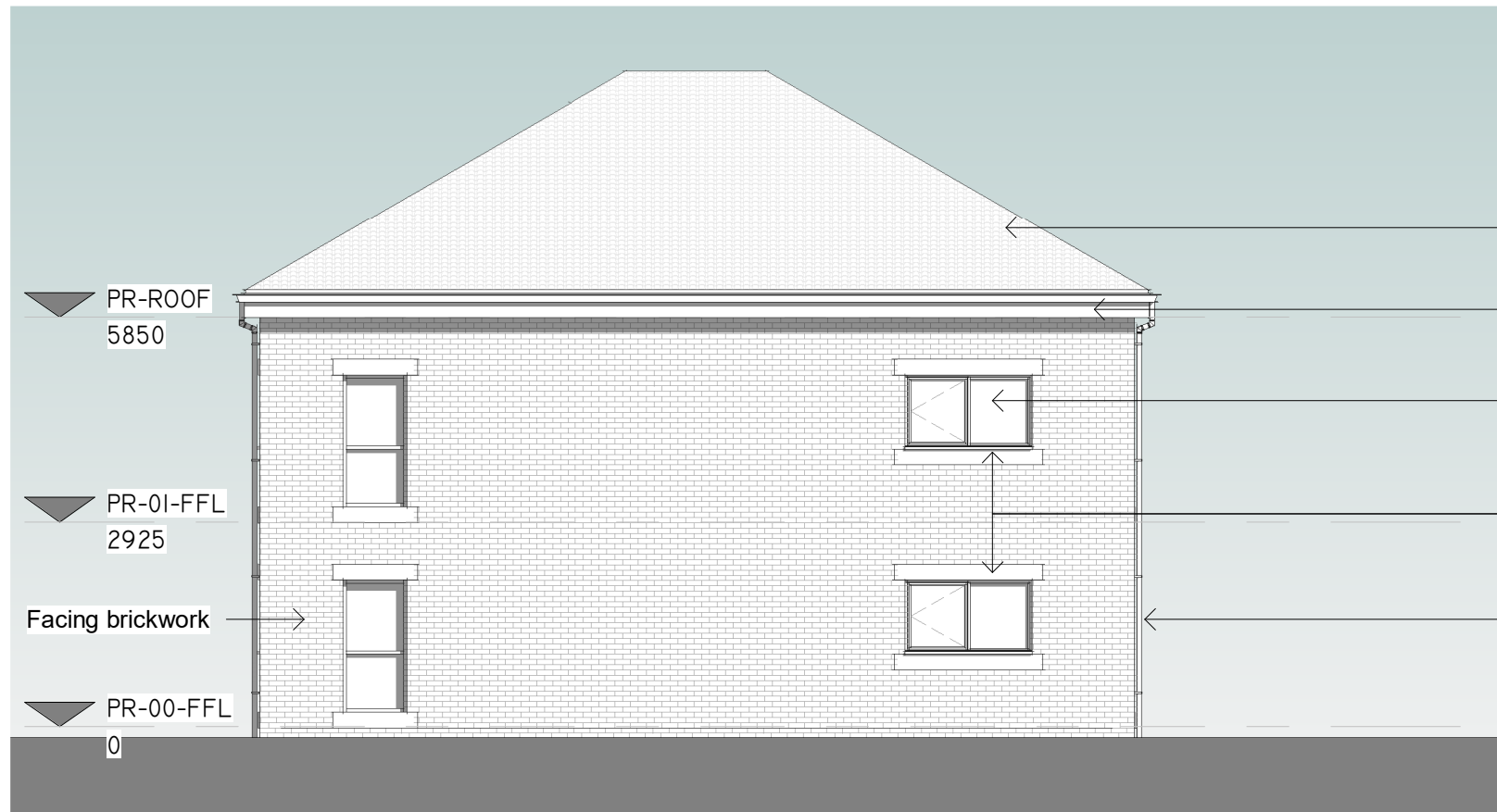
PROPOSED EAST FACING ELEVATION

1 : 100



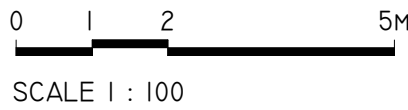
PROPOSED NORTH FACING ELEVATION

1 : 100



PROPOSED WEST FACING ELEVATION

1 : 100



1. Do not scale drawing. If in doubt contact Ropergate Architecture Ltd
2. All dimensions are in millimetres unless noted otherwise.
3. Not for construction unless stated otherwise.
4. When appropriate, this drawing is to be read in conjunction with project specific Designers Risk Assessments, produced in accordance with requirements of Regulation 13 of the Construction (Design and Management) Regulations 2007.
5. The design shown on this drawing is the property of Ropergate Architecture Ltd and is not to be used or its contents copied, communicated or disclosed, in whole or in part, except in accordance with a contract, licence or agreement in writing with Ropergate Architecture Ltd.

NOTES

E	10.02.25	Apartments adjusted to SYR DG	AB	DM
D	12.11.24	Planning Issue	RA	DM
C	29.08.24	Timber cladding removed	RA	MS
B	28.08.24	Window spec updated	RA	MS
A	28.08.24	Elevations updated	RA	MS
-	24.05.24	Pre-application submission	AJB	MS

REV	DATE	DESCRIPTION	DRN	CKD
-----	------	-------------	-----	-----



**ROPERGATE
ARCHITECTURE**

THE OLD POST OFFICE, 20B ROPERGATE
PONTEFRAC, WF8 1LY
Tel 01977 269100
Email: mail@ropergatearchitecture.uk www.ropergatearchitecture.uk

PROJECT
Residential Development
Alpha Dora
Haddon Road Barnsley

TITLE
Unit A Proposed Plans & Elevations

STAGE
Planning

SCALE 1 : 100@ A1	DATE 31/05/24
DRAWN AJB	CHECKED MS
DRAWING No. HR- RA- A- XX- DR- A- (03)05	REV. E
Suitability S0	PROJECT No. 1854