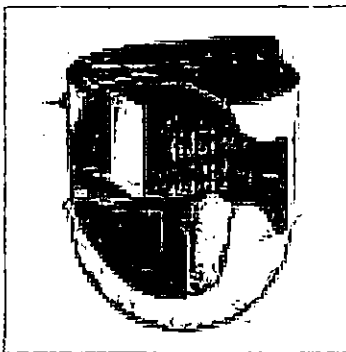


Search Clearwater 6 Population Package Sewage Treatment System E6



Product Data

[Clearwater E6 to E18 Treatment Plant Instructions](#)

[Clearwater E6 and E12 Drawings - Gravity System](#)

[Clearwater E6 and E12 Drawings - Pumped System](#)

[Clearwater Wastewater Brochure](#)

Clearwater 6 Population Package Sewage Treatment System E6

[0 reviews](#) | [Write a review](#)



SEWAGE

These Clearwater Package Sewage Treatment Systems are a versatile and cost effective solution. Using trusted aerobic biological processes for the treatment of sewage, a Clearwater treatment system makes for an affordable and environmentally responsible solution. Quick and easy to install, a Clearwater sewage treatment system is fully compliant with the latest regulations and is designed for low-cost and simple maintenance.

Key Features of E-Range Sewage Treatment System:

- Certified to EN 12566 standard and compliant with Building Regulations.
- Subject to consent and site conditions can discharge directly into a watercourse.
- No mechanical or electrical components within the main body of the tank - low running and maintenance costs.
- Low level visibility in the garden with a lockable child proof cover.
- Controlled ventilation - minimises risk of odour nuisance.
- Easy to install and maintain with annual desludging & emptying.

Specification:

Model Number: E6

Max. Number of Full Time Residents: 6

Daily Flow (m ³ /day):	1.2
BOD Load (kg/day):	0.36
Weight when Empty (kg):	195
Outside Diameter (mm):	1900
Depth (mm):	2200
Standard Inlet Invert (m)*:	1.0
Inlet Invert to Base (m):	1.2
Outlet Invert Gravity Systems (m)**:	1.1
Motor Rating (watts):	60
Drainage Connections (mm):	110

*There are two depths of inlet in the range 1.0m and 1.5m.

**0.605m on IPS models.

Under normal domestic conditions a discharge of 20mg/l BOD, 30mg/l SS and 20mg/l ammonia can be achieved.

Options:

Gravity or Integral Pumped System (IPS):

Gravity is the standard no cost option, however where the inlet to the watercourse or soakaway is higher than the outlet of the treatment plant you will require the optional Integral Pumped System (IPS) as this will pump the waste water uphill and into your discharge point. Depending upon site conditions the IPS system will pump from 1.0m head upto a distance of 200m or a maximum of 6.0m head with a distance of 15m - Please contact us on [0800 0568 350](tel:08000568350) should you require more information on the IPS and it's capabilities.

Invert Depth:

The standard invert depth is 1.0m, however where a deeper invert is required there is the option of a 1.5m invert.

Installation:

Full instructions and dimensions can be downloaded from our Product Data.

Delivery:

FREE delivery of this product includes the whole of the UK Mainland (including Scotland) and is subject to suitable access for a large goods vehicle. This product is delivered to the kerbside. It is the customers responsibility to provide suitable mechanical offloading facilities (eg. JCB evcavator or loader) to offload this tank. If you need any assistance please contact us on [0800 0568 350](tel:08000568350) prior to purchase - please remember we are here to help!

▣ **£1,665.00** (ex. VAT)

▪ was ~~£2,034.00~~

▣ **£1,998.00** (inc. VAT)

▪ Product Code: E6

Gravity Outlet or Integral Pumped System:

- Gravity Outlet
- Integral Pumped System (+£180.00)

Invert Depth:

- Standard 1.0m
- 1.5m (+£180.00)

Quantity:

1

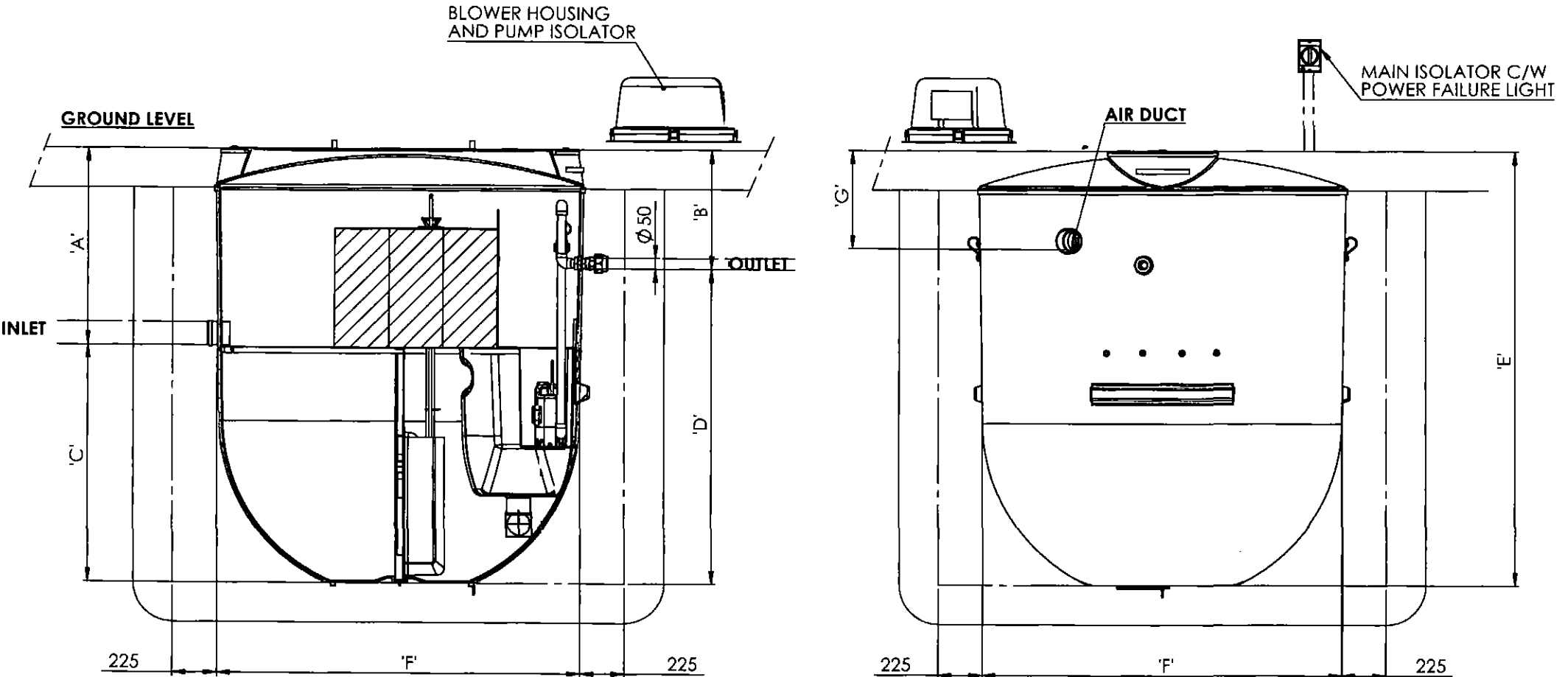
ADD TO BASKET[Add to wishlist](#)[Add to compare](#)

[Reviews](#) [Write a Review](#) [Delivery](#) There are no reviews for this product.

Notes:

1. This drawing is for 'Dimensional Information Only', It is essential that this drawing is read in conjunction with the 'Installation Guidelines' supplied with the unit. (Copies available from our sales department).
2. All Pipe connections are $\varnothing 110.0\text{mm}$ PVCu.
3. All units require appropriate 'Cover' & 'Frame' to suit site loadings (standard cover supplied).
4. Blower assembly mounted externally, within 10m of treatment plant.
5. Isolator mounted close to treatment plant so power failure light is visible, wiring from main isolator to be fed back to blower housing and connected to blower and pump isolator.
6. $\varnothing 160\text{mm}$ Inlet Option - By External Adaptor Only.

Unit Dimension Chart								
Unit	Dim 'A' (mm)	Dim 'B' (mm)	Dim 'C' (mm)	Dim 'D' (mm)	Dim 'E' (mm)	Dim 'F' (mm)	Dim 'G' (mm)	Unit Weight (Kgs)
E006P10AK	1000	600	1200	1600	2200	1850	500	260
E006P15AK	1500	600	1200	2100	2700	1850	500	280
E012P10AK	1000	600	1700	2100	2700	1850	500	285
E012P15AK	1500	600	1700	2600	3200	1850	500	305



Please check with Kingspan Environmental that this drawing is the latest issue

Issue	Date	Drawn by	Approved by	Description	Material	Tolerance	
04	26/11/13	JMcM		CC1145 - Column 'D' Dimensions amended	Various		
03	11/06/12	JMcM		CC1048		Thickness : n/a	
02	10.11.10	JMcM		CC901 - Amend Weights	Weight : 893.33 Kg Kgs	Surface Area :	

Drawing : DS0969P - E6 & E12 IPS Page 1 of 1
E6 & E12 TREATMENT PLANTS (PUMPED)

All dimensions in mm

Scale: Not to scale

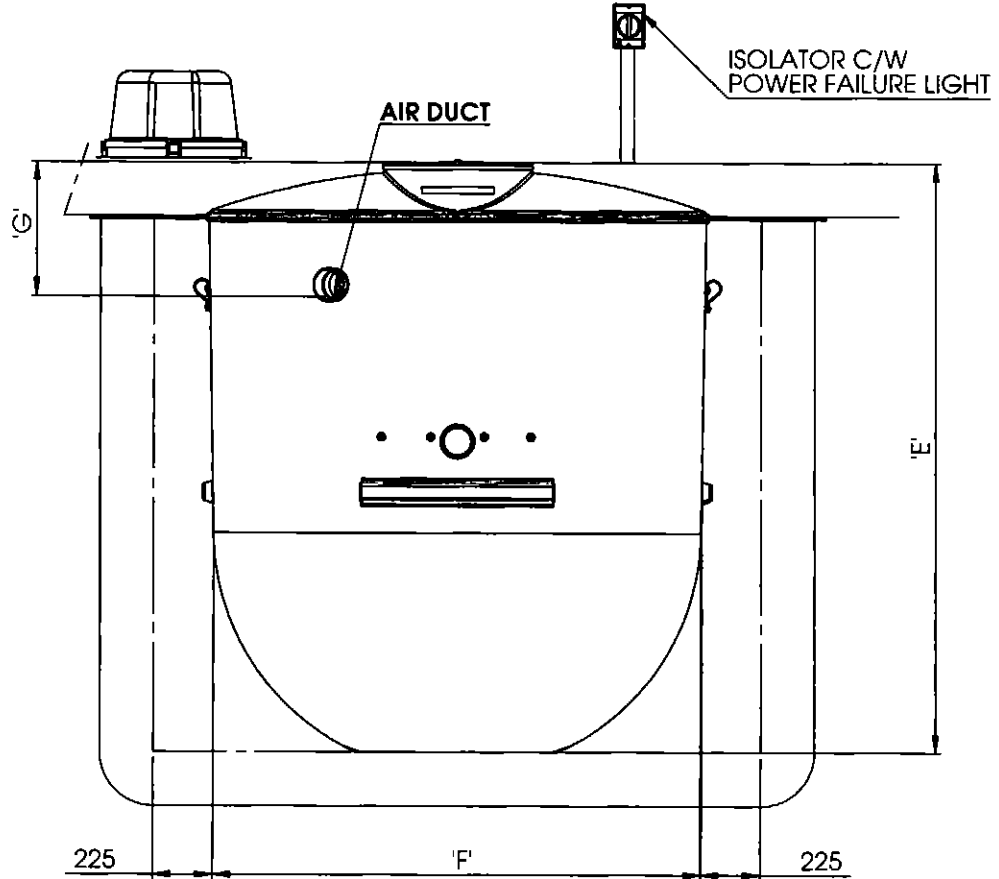
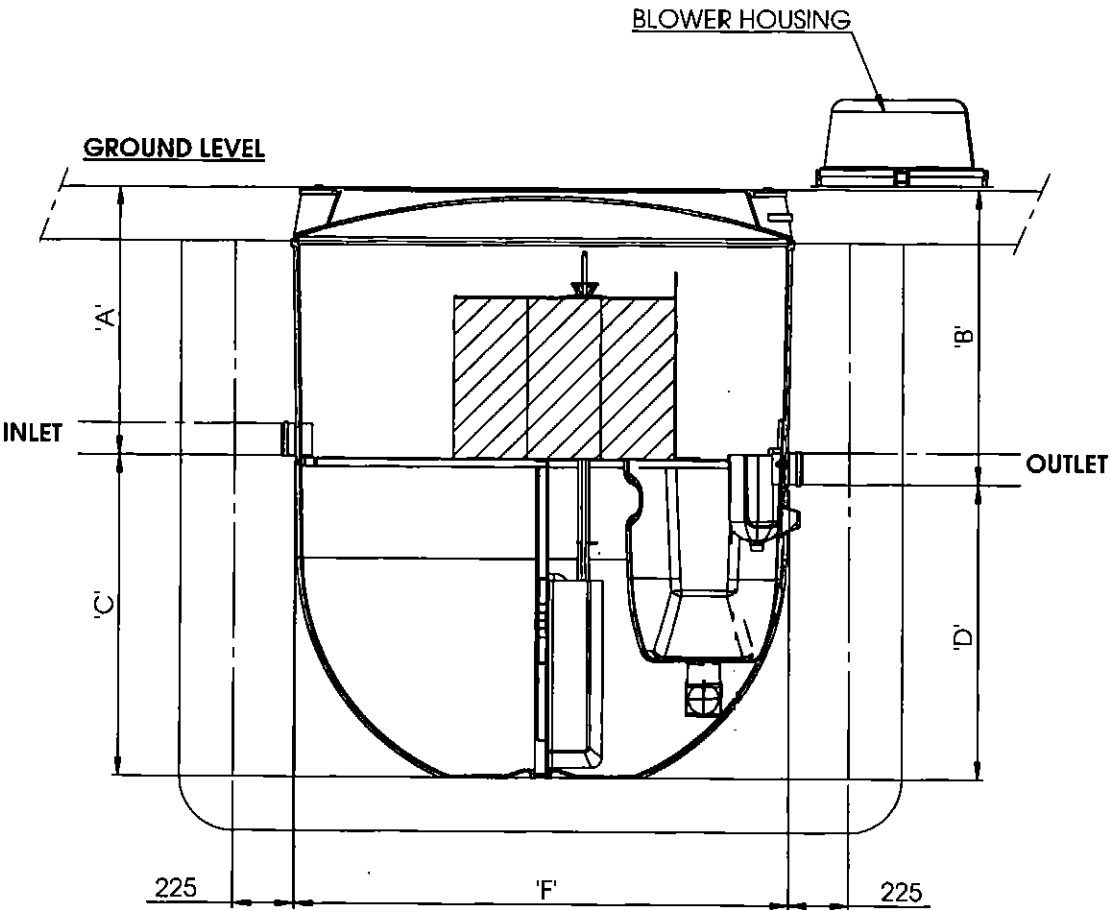
Kingspan Environmental reserve the right to alter the details of this drawing without prior notice. This drawing is copyright and may not be reproduced or used without the written permission of Kingspan Environmental.



Notes:

1. This drawing is for 'Dimensional Information Only', It is essential that this drawing is read in conjunction with the 'Installation Guidelines' supplied with the unit. (Copies available from our sales department).
2. All Pipe connections are $\varnothing 110.0\text{mm}$ PVCu.
3. All units require appropriate 'Cover' & 'Frame' to suit site loadings (standard cover supplied).
4. Blower assembly mounted externally, within 10m of treatment plant.
5. Isolator mounted close to treatment plant so power failure light is visible, wiring from isolator to be fed back to blower housing.
6. $\varnothing 160\text{mm}$ Inlet Option - By External Adaptor Only.

Unit Dimension Chart								
Unit	Dim 'A' (mm)	Dim 'B' (mm)	Dim 'C' (mm)	Dim 'D' (mm)	Dim 'E' (mm)	Dim 'F' (mm)	Dim 'G' (mm)	Unit Weight (Kgs)
E006G10AK	1000	1100	1200	1100	2200	1850	500	250
E006G15AK	1500	1600	1200	1100	2700	1850	500	270
E012G10AK	1000	1100	1700	1600	2700	1850	500	275
E012G15AK	1500	1600	1700	1600	3200	1850	500	295



Please check with Kingspan Environmental that this drawing is the latest issue				Material : Various		Tolerance :		Drawing : DS0968P - E6 & E12 Gravity Page 1 of 1
Issue	Date	Drawn by	Approved by	Finish :		Thickness : n/a		
03	11/06/12	JMcM		Description CC1048		Surface Area :		
02	11.10.10	J.McM		Weight : See Table		CC901 - Amend Weights		E6 & E12 TREATMENT PLANTS (GRAVITY)
All dimensions in mm				Scale: Not to scale				
Kingspan Environmental reserve the right to alter the details of this drawing without prior notice. This drawing is copyright and may not be reproduced or used without the written permission of Kingspan Environmental.								