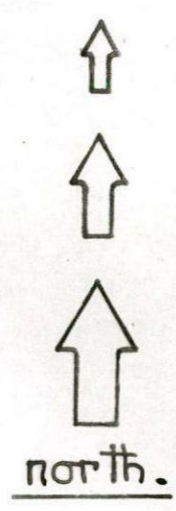
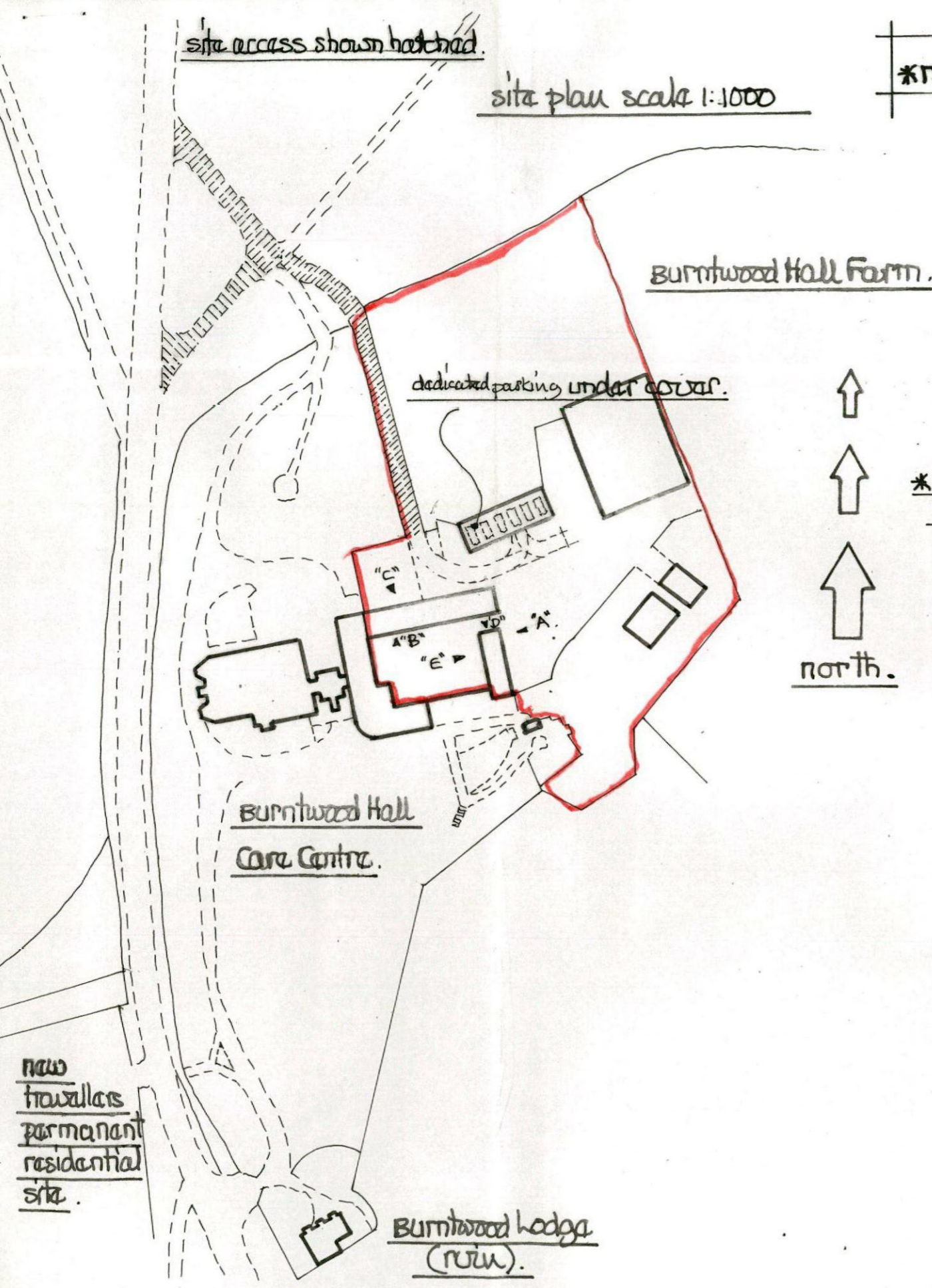


site access shown hatched.

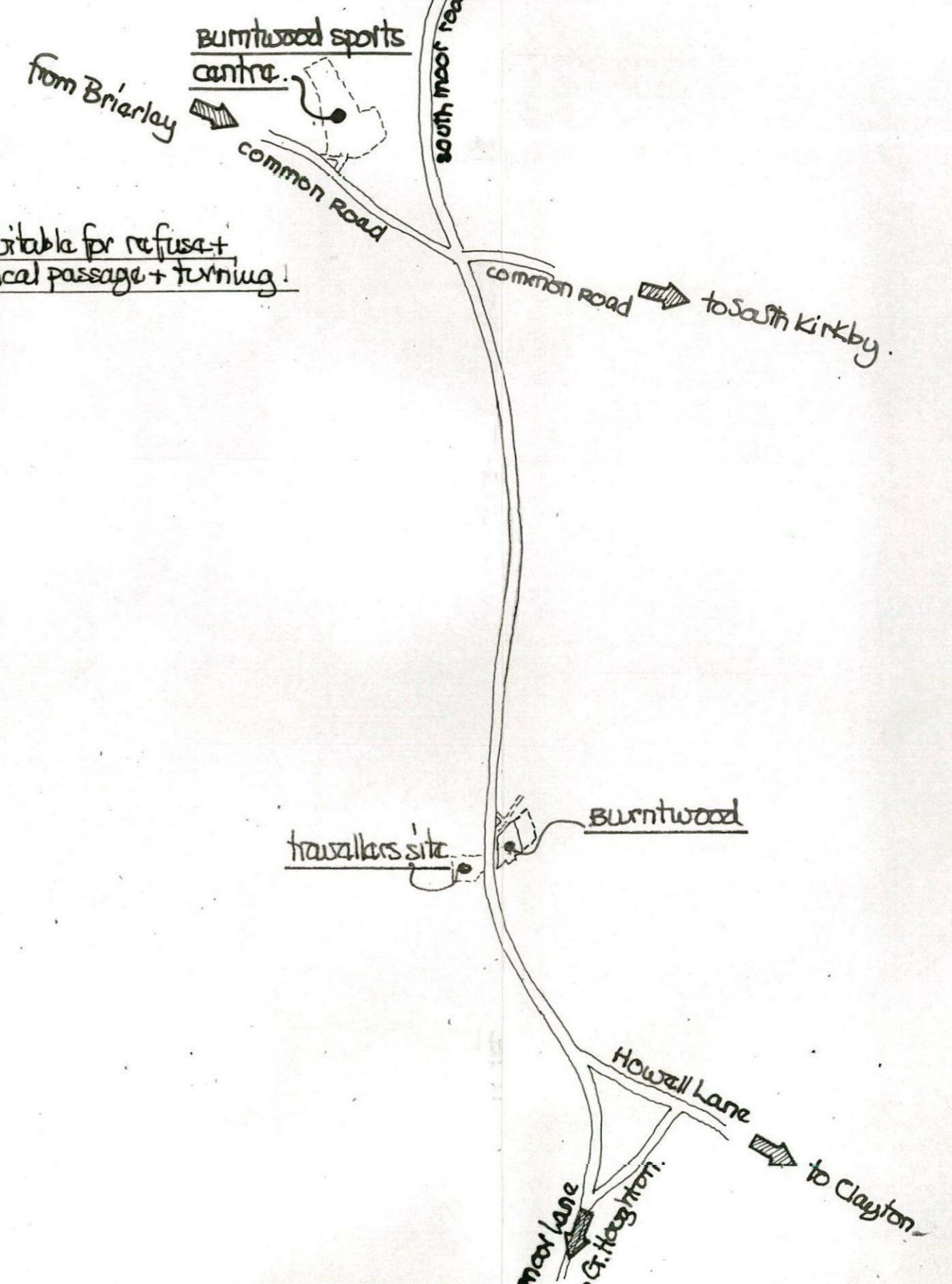
site plan scale 1:1000

revised for Hannah Androw T&CP 2016/1114.may/

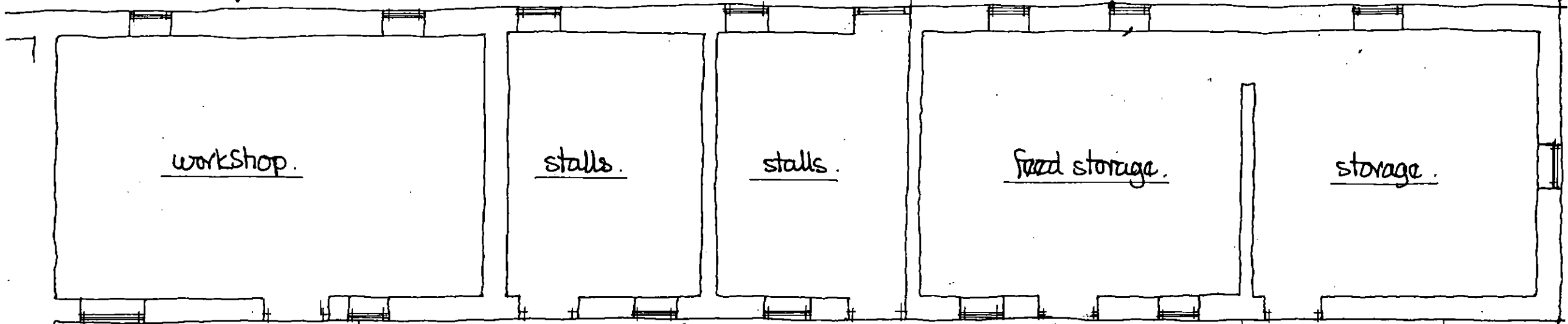
location plan scale 1:17500
(extract from AA street map).



*note access suitable for refuse + recycling vehicle passage + turning!



↓ elevation on "C"



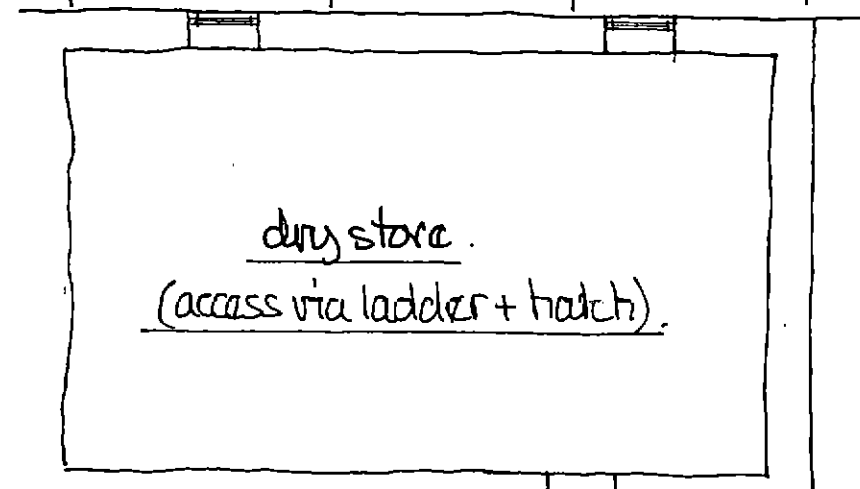
existing ground floor plan block "B"

↑ elevation on "B"

upper floor plan block "B"

elevation on "D"

← access



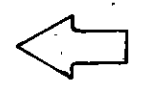
existing ground floor plan block "A"

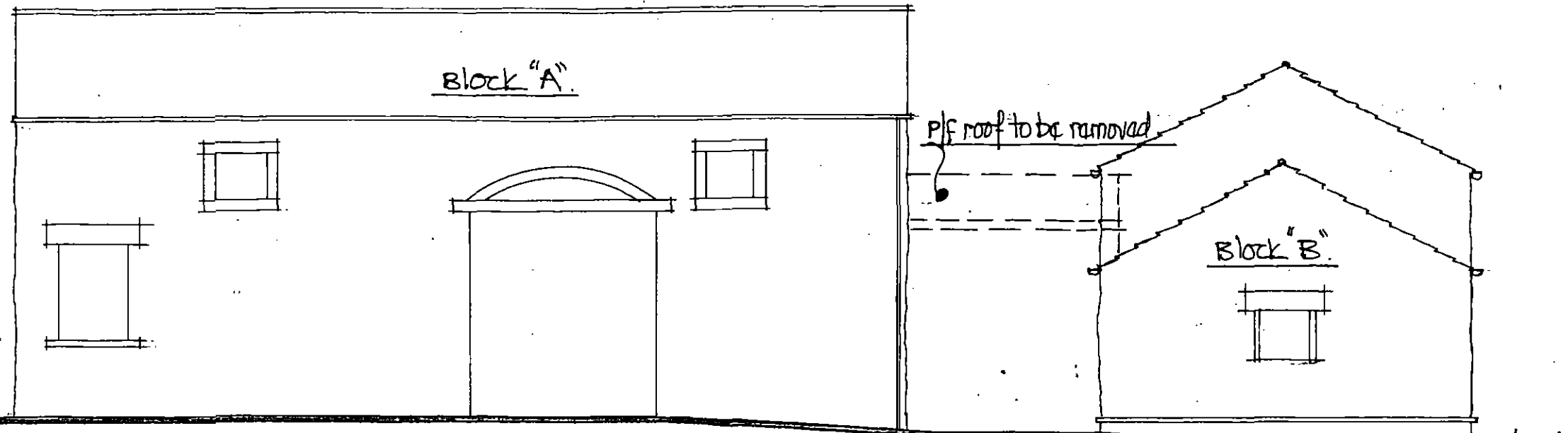
* note - block A is two stories in height without an intermediate floor level to accommodate machinery *

elevation on "E"

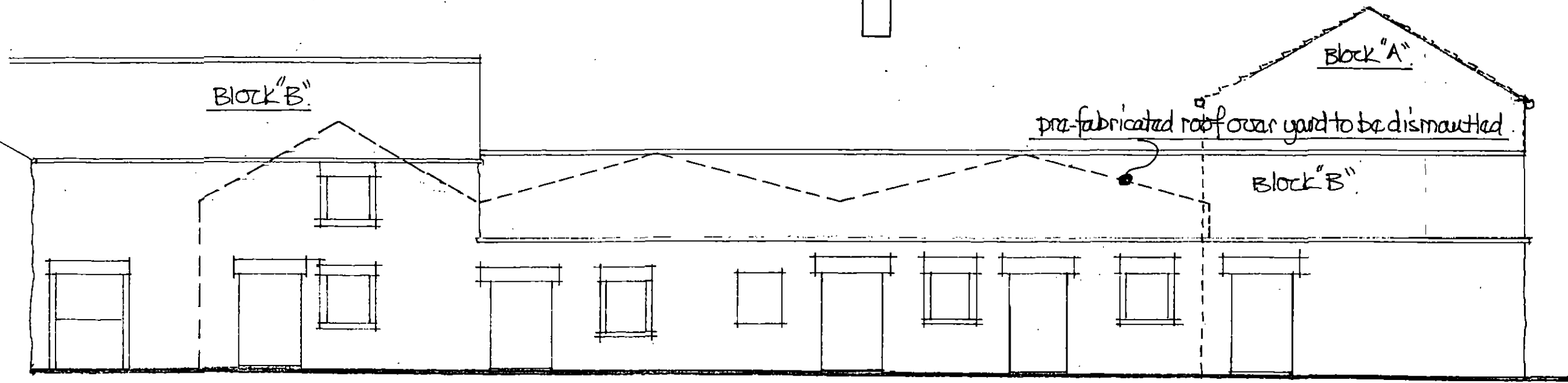
* note existing roof structure forming enclosed farm parking to be removed

elevation on "A"



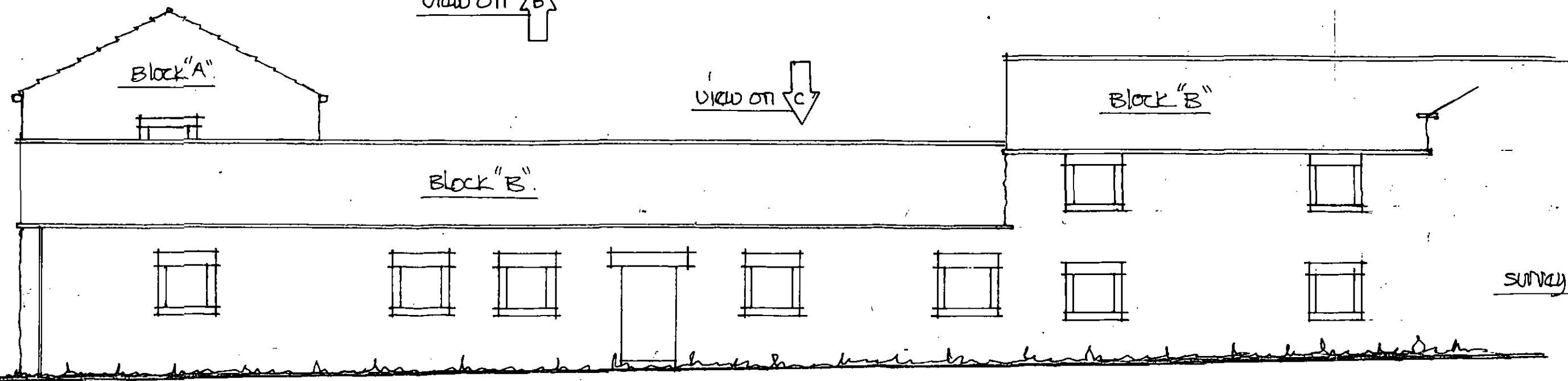


view on ↑ A

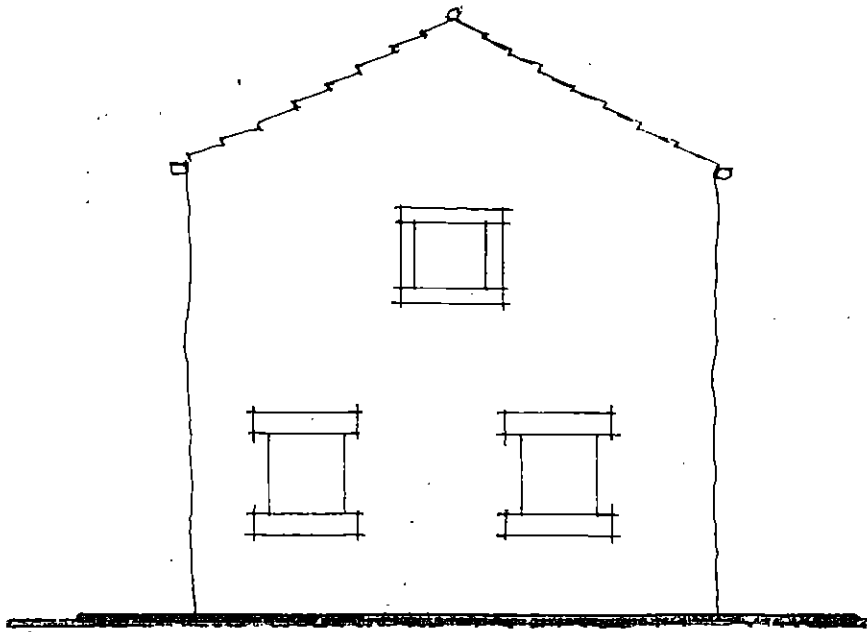


view on ↑ B

view on ↓ C

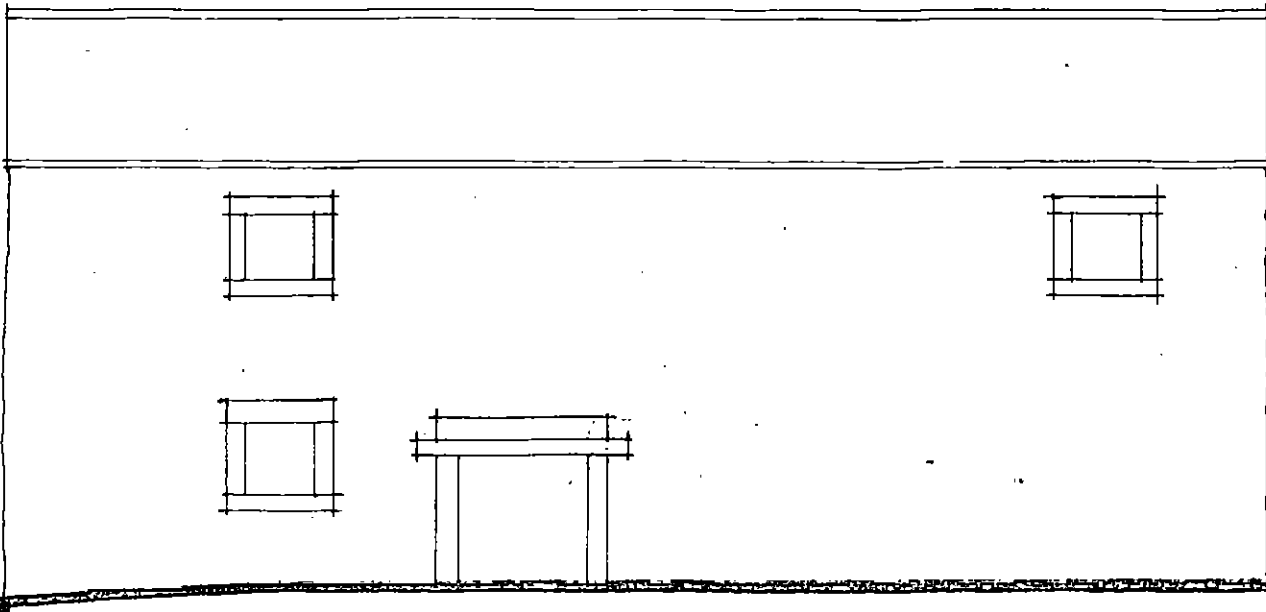


survey details 1:100m



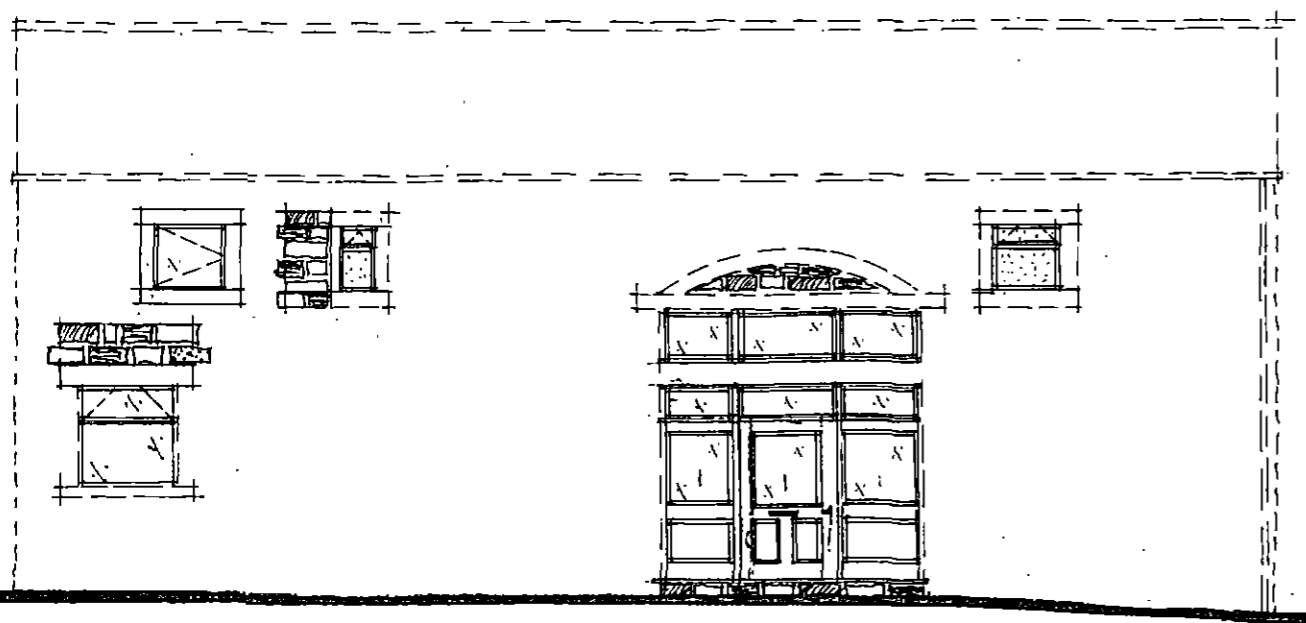
↑
VIEW ON "D"

VIEW ON "E"

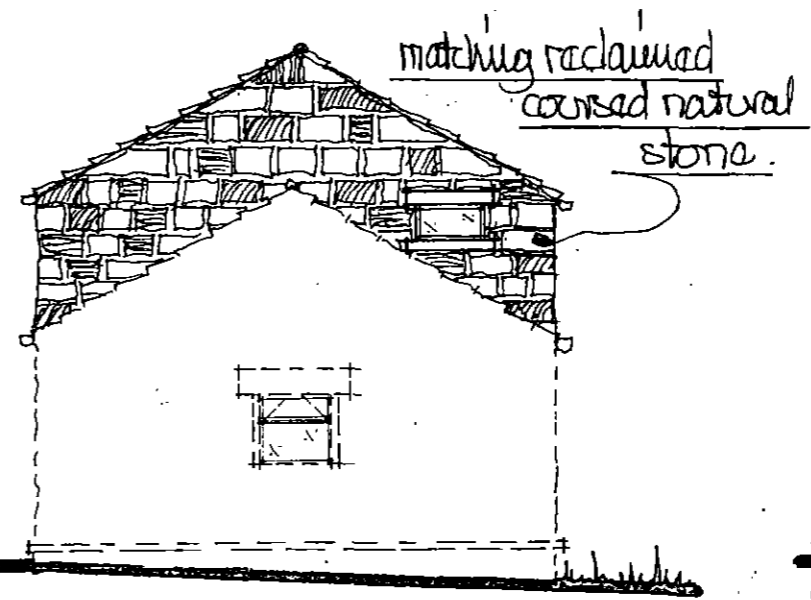


survey details 1:100m.

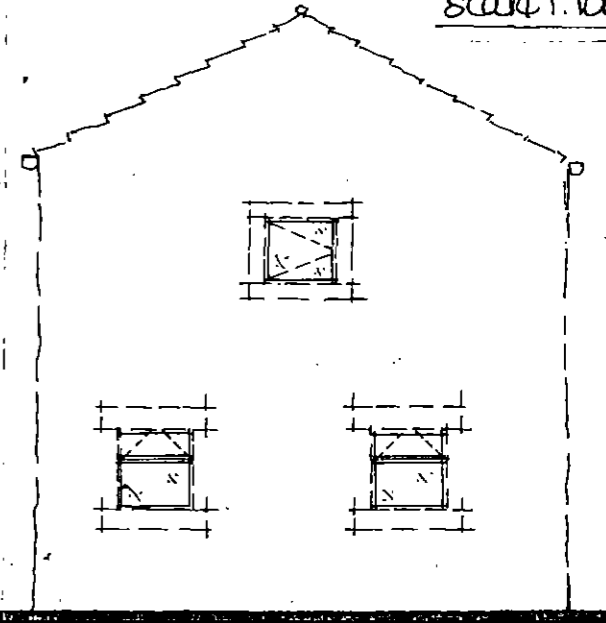
scale 1:100m.



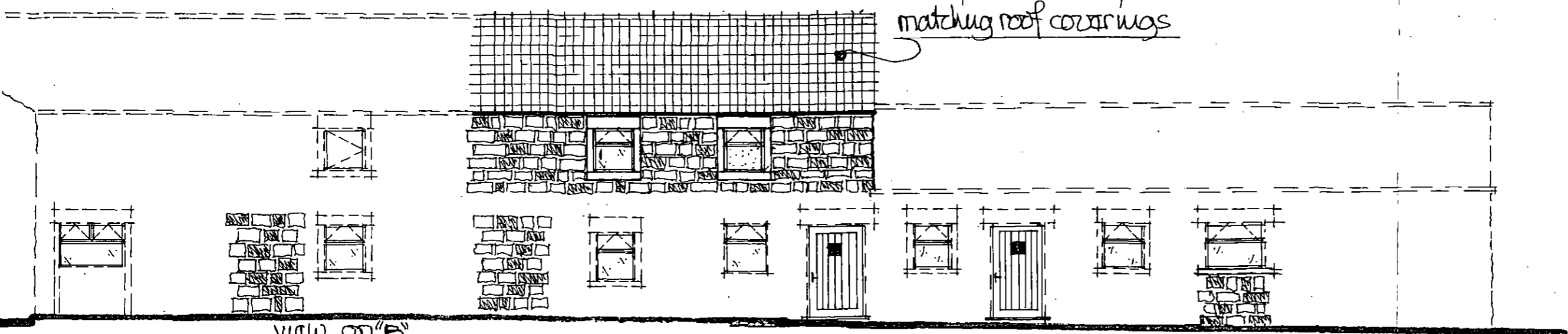
VIEW ON "A"



matching reclaimed
coursed natural
stone.



VIEW ON "D"

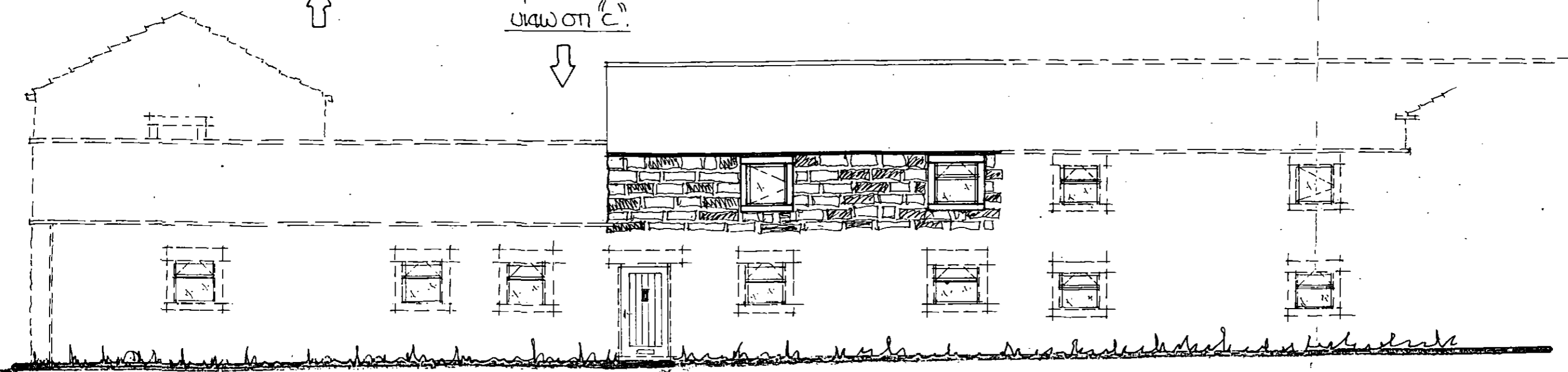


matching roof coverings

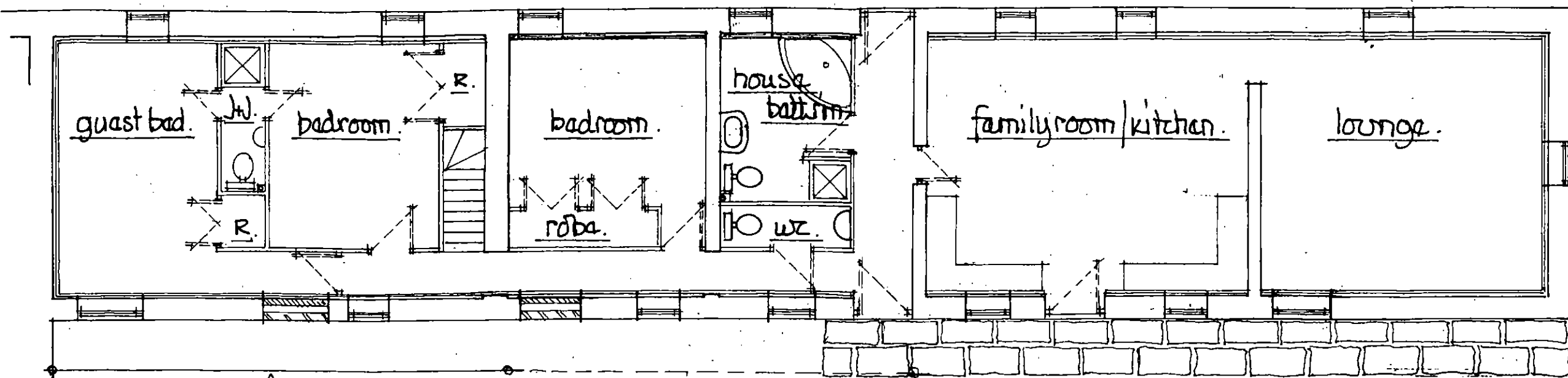
VIEW ON "B"



VIEW ON "C"



scale 1:100m.
ground floor plan
block "B"

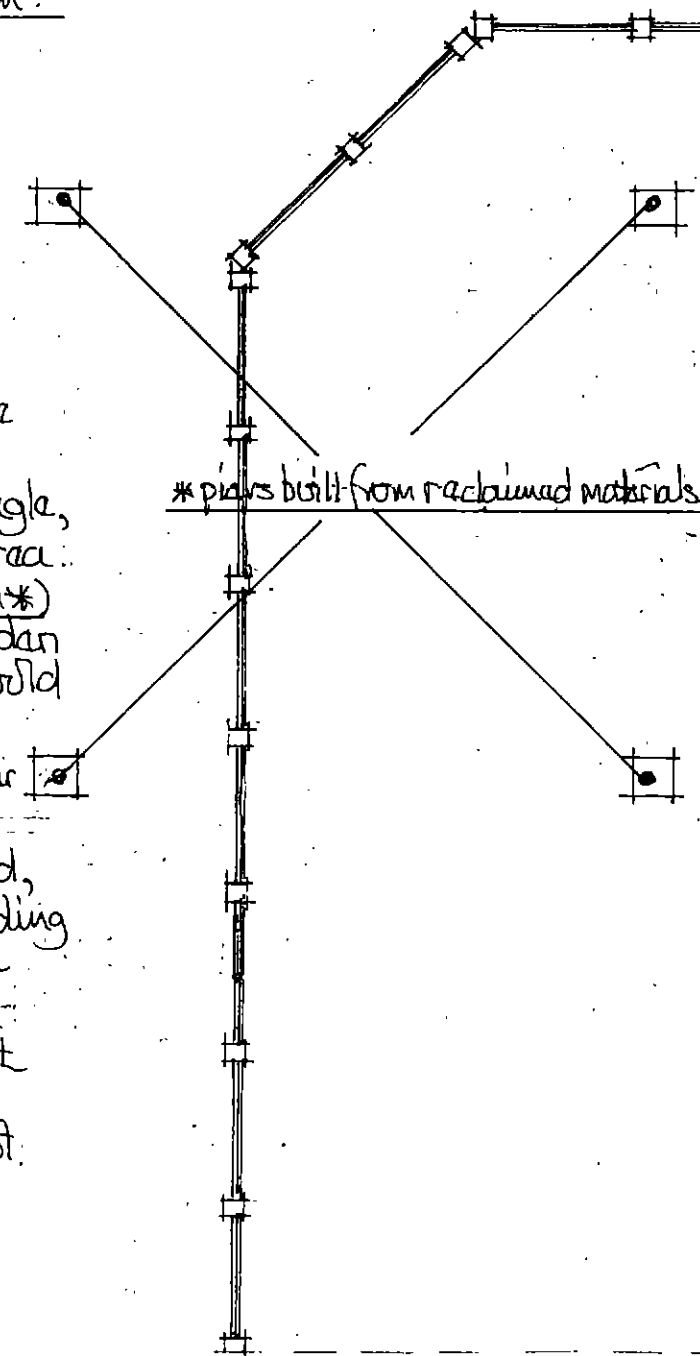


↑ see upper floor plan.

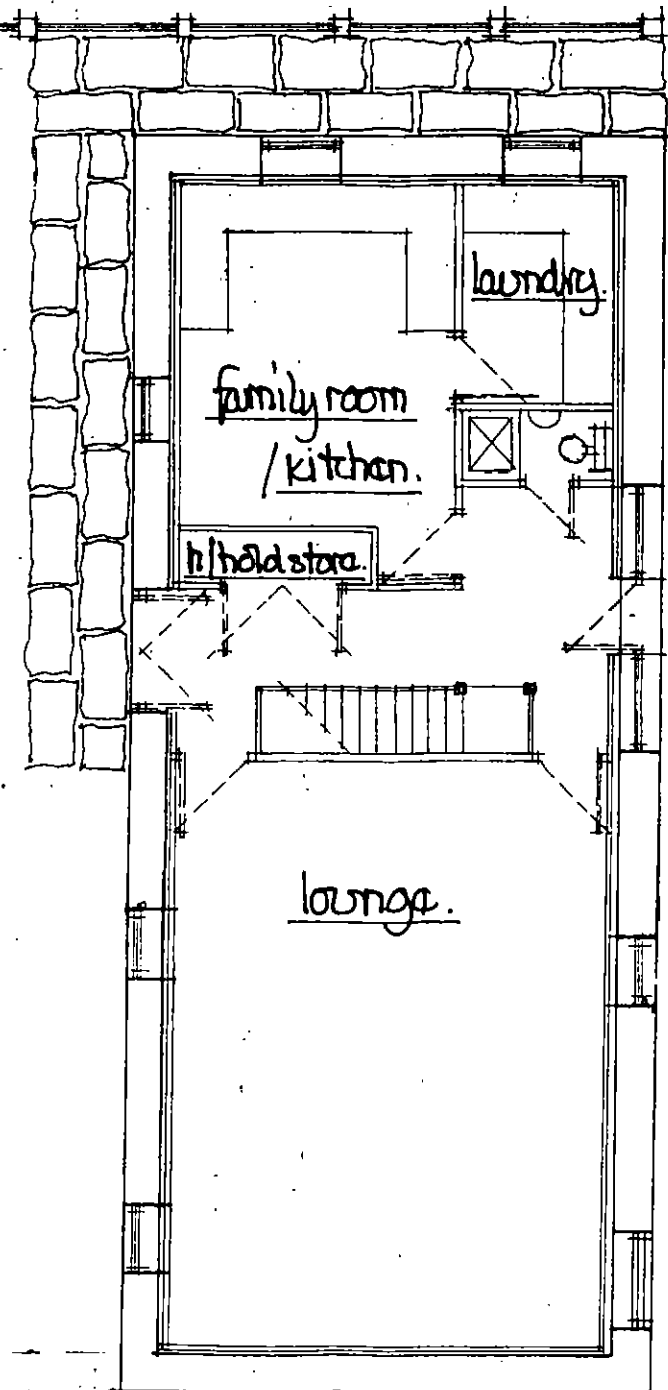
* info re 4 no existing brickwork piers :-

- a) during the early 1940's the armed forces occupied BURNWOOD HALL & its associated land & out buildings
 - b) the buildings in question are typical natural stone built farm buildings sited around an enclosed quadrangle
 - c) as part of the occupation the army built the four brickwork piers to support a timber & sheeting roof, covering the whole of the quadrangle, in order to provide an undercover work area.
- (info from former owner of Burnwood Hall Farm*)
- 1) when the existing roof is removed to form garden areas the structural stability of the piers would be in question (width to height ratio) due to the restraining loading at the top edge no longer in place - in order that some portion of the height may be retained, with safety in mind, advice will be sought from BMBC's local building control officer during his statutory inspection program.
 - 2) details regarding the piers will be discussed with HANNAH ANDREW & TONY WILD, BMBC's planning services after building controls input.

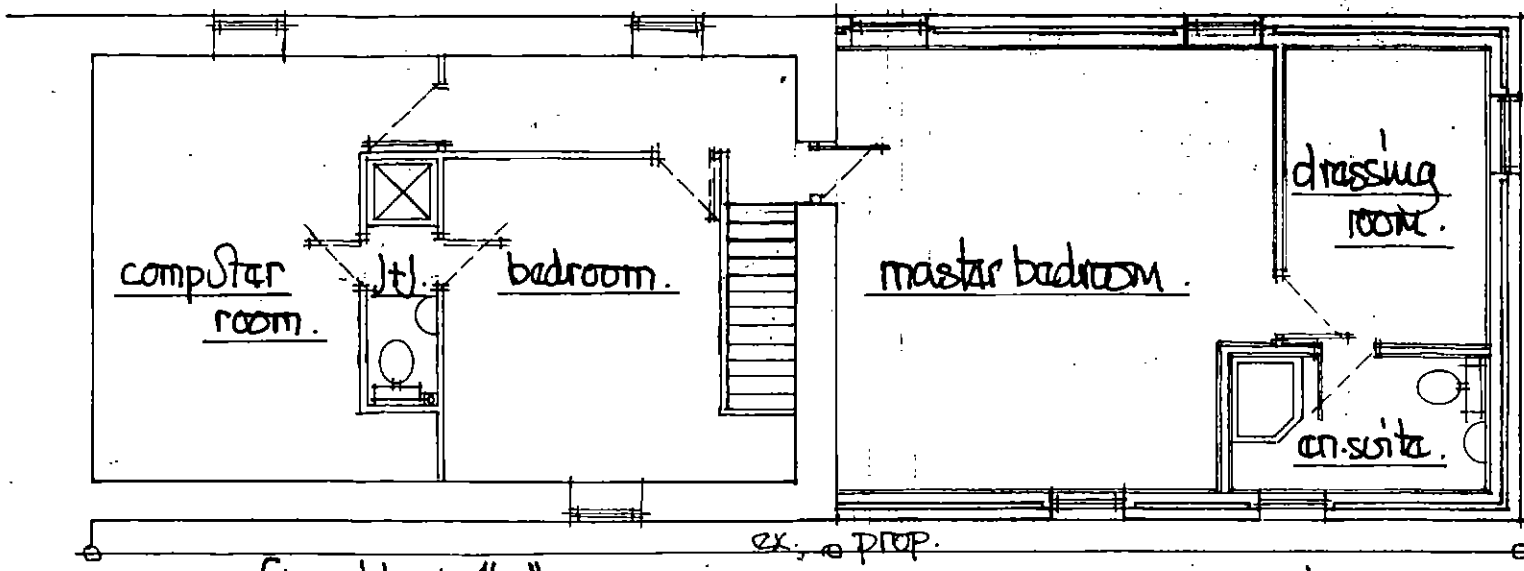
* piers built from reclaimed materials from on site sk



ground floor plan
block "A"



← see upper floor plan.



upper floor block "B".

ex. & prop.

scale: 1:100m.

upper floor block "A"

