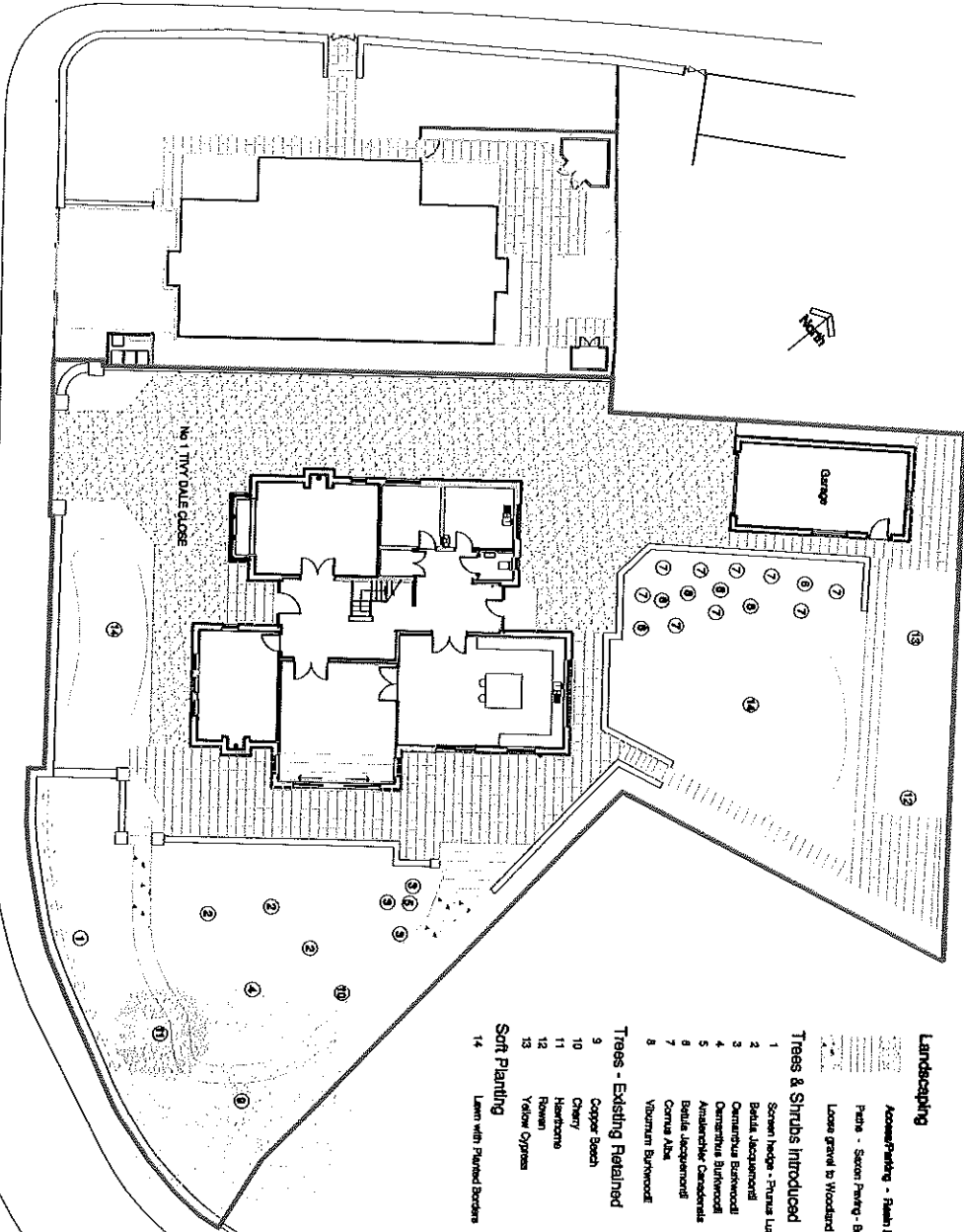


TIVY DALE

TIVY DALE CLOSE



Landscaping

Access/Paving - Flush Bound with Block Borders
 Paths - Secon Paving - Baff
 Loose gravel to Woodland Area - Ground cover planting

Trees & Shrubs Introduced

- 1 Screen hedge - Prunus Laetevirens 200 Bah
- 2 Betula - Jacquemontii Malt
- 3 Cornus sanguinea 175 Bah
- 4 Cornus sanguinea 100 Bah
- 5 Anemone pulsatilla 08 Bah
- 6 Betula - Jacquemontii 10 Bah
- 7 Cornus Alba 125 Bah
- 8 Viburnum Burinoidii 150 Bah

Trees - Existing Retained

- 9 Copper Beech
- 10 Cherry
- 11 Hawthorn
- 12 Rowan
- 13 Yellow Oxeye

Soft Planting

- 14 Lawn with Paved Borders

DATE: 2018/1/4/43
 DRAWN BY: [Name]
 CHECKED BY: [Name]
 APPROVED BY: [Name]

NO.	DESCRIPTION	BY	CHK	DATE



FIFTH PARTNERSHIP
 ARCHITECTS • QUANTITY SURVEYORS • INTERIORS
 57 The Square, York
 YO1 1AB
 Tel: 01904 616161
 Fax: 01904 616162
 www.fifthpartnership.co.uk

KEDCASTLE LIMITED
 100 The Square, York
 YO1 1AB
 Tel: 01904 616161
 Fax: 01904 616162
 www.kedcastle.co.uk

CLIENT
 KEDCASTLE LTD

PROJECT
 No 1 TIVY DALE CLOSE

DATE/TITLE
 2018/1/4/43
 DISCHARGE OF CONDITION 12

DISCHARGE OF CONDITION 12
 2018/1/4/43