

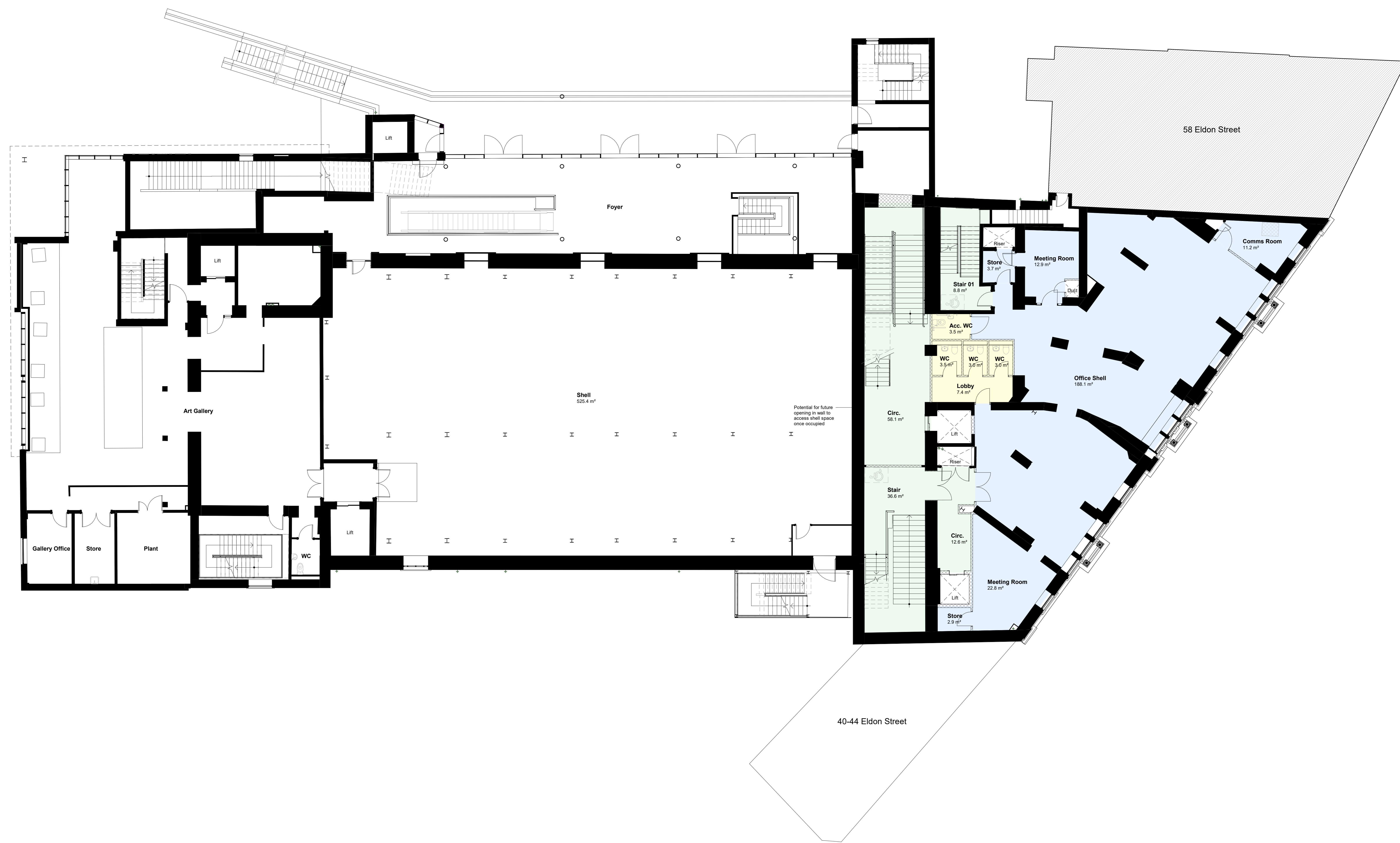
**Notes**  
 Check all dimensions on site. Do not scale from this drawing.  
 Report any discrepancies and omissions to HLM Architects  
 This drawing is Copyright ©

**Accommodation**

- Lettable Space
- Creation Space
- Office Space
- Flexible Space
- Ancillary
- Circulation

The Grade B office space will remain and be refurbished at this level with a new accessible entrance accessed from Eldon Street so it is separate to the operation of the Civic facilities. The office space will be provided with toilets and kitchenette.

A new staircase will be introduced from second to third floor linking the Eldon Street entrance with the Hanson Street facilities.



Rev	Description	Date	By	Chk
P01	ISSUED FOR PLANNING	06/05/2022	MBD	AJT
Revisions				
				Suitability
Project				S2 INFORMATION

**11-1177-01  
 BARNSELY CIVIC**

Client  
**BARNSELY CIVIC  
 ENTERPRISE**

Title  
**Second Floor Proposed  
 Plan**

Drawing No.	Revision
BCE-HLM-01-02-DR-A-00002	P01

Scale	Drawn
1:100 @A0	MBD
Date	Checked
20/04/2022	AJT

