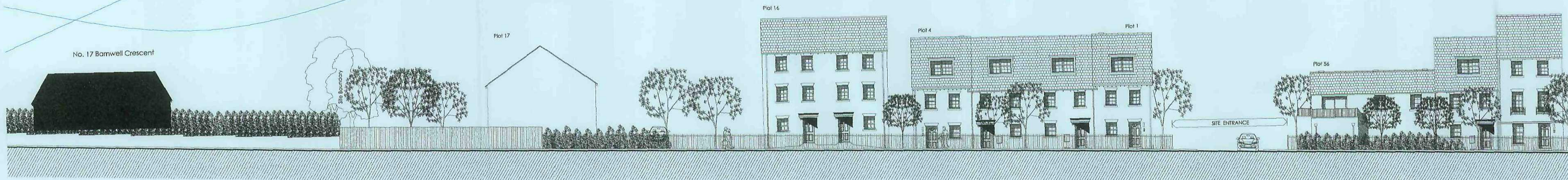


All work to be carried out in accordance with the requirements of the Building Regulations, Water Authority and the Construction (Design and Management) Regulations currently in force.

Do not scale from this drawing. Architect to be notified of any discrepancies.

Verify relevant dimensions on site before commencing work or preparing shop drawings. This drawing is copyright.

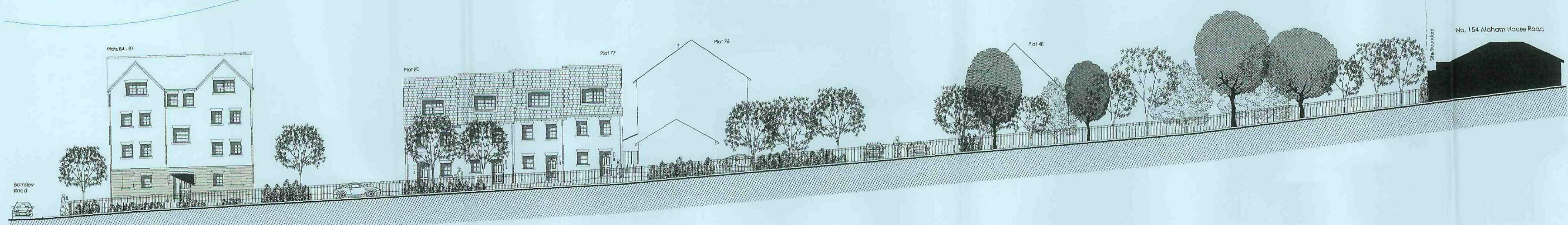
Rev: _____ Date: _____ Action: _____ In/s: _____



View Along Barnsley Road (plots 1 to 4, 13 to 17 & 56)



View Along Barnsley Road (plots 1 & 56 to 92)



View along Aldham House Road

homes by **strata**

strata homes limited quoy point lakeside doncaster DN4 5PL
 T 01302 308508 F 01302 308501 www.homesbystrata.co.uk

scale: 1/200 @ A1 | drawn by: tft | date: 07.03.2011

Project: **Barnsley Road Wombwell**

Drawing: **Street Scenes (sheet 1)**

Drawing Number: **BR/SS/WW/01** | Revision: **A**



All work to be carried out in accordance with the requirements of the Building Regulations, Water Authority and the Construction (Design and Management) Regulations currently in force.

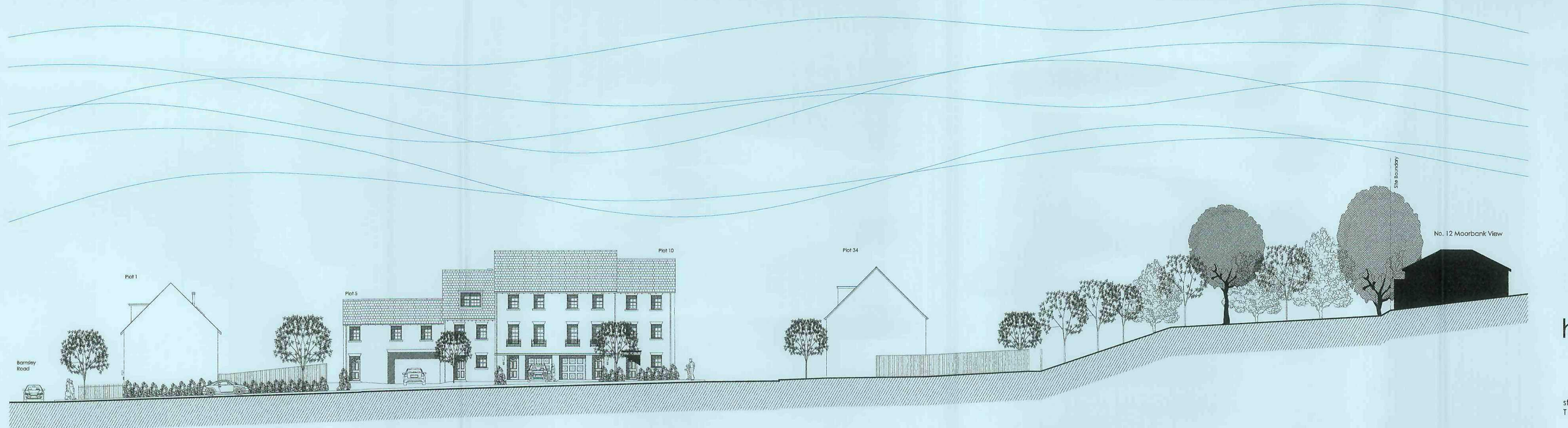
Do not scale from this drawing. Architect to be notified of any discrepancies.

Verify relevant dimensions on site before commencing work or preparing shop drawings. This drawing is copyright.

Rev: _____ Date: _____ Action: _____ In/s: _____



View of plots 49 to 57.



View of plots 1 & 5 to 10.

homes by **strata**

strata homes limited quoy point lakeside doncaster DN4 5PL
 T 01302 308508 F 01302 308501 www.homesbystrata.co.uk

scale: 1/200 @ A1 | drawn by: ttb | date: 07.03.2011

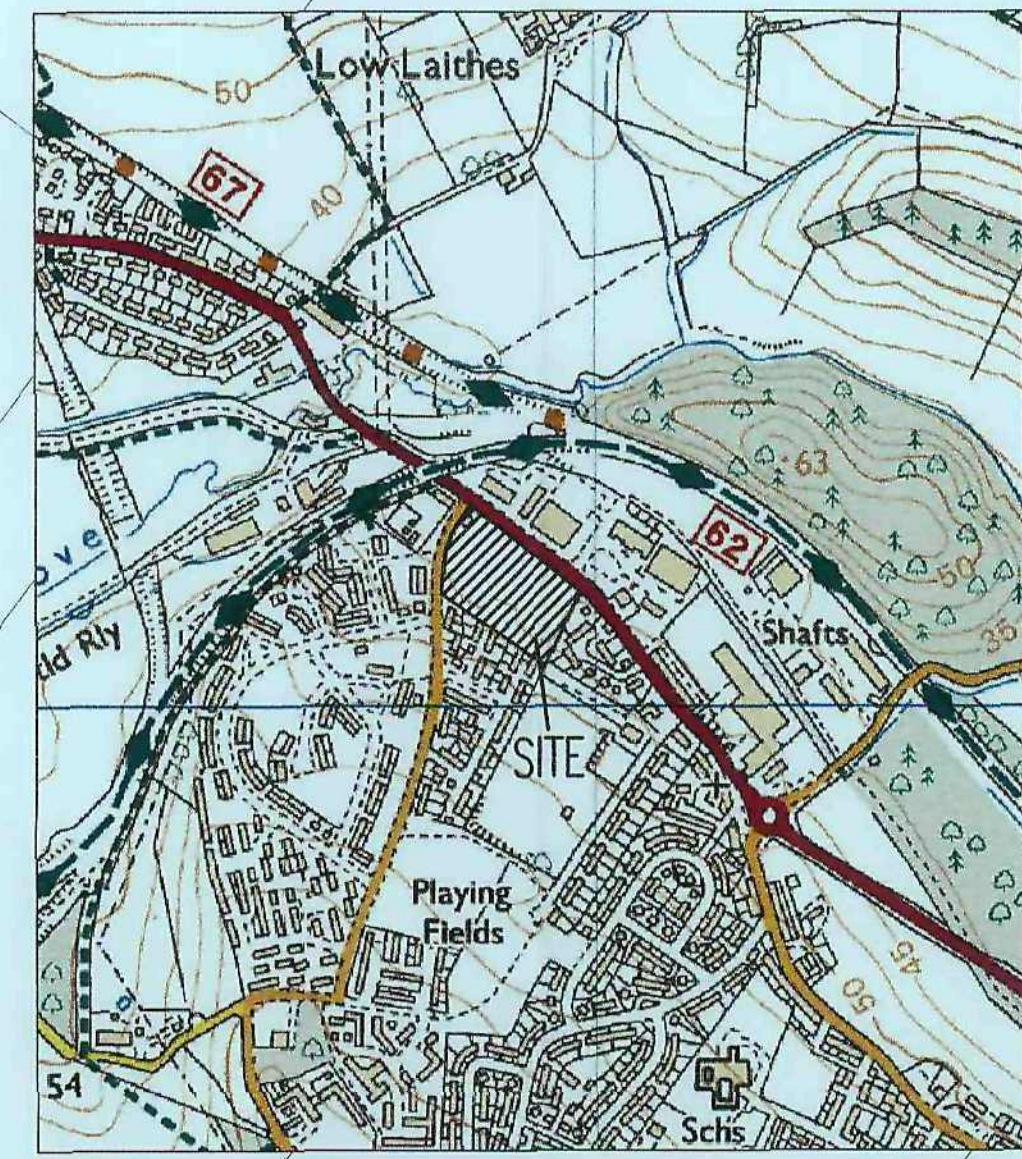
Project: Barnsley Road
 Wombwell

Drawing: Street Scenes
 (sheet 2)

Drawing Number: BR/SS/WW/02 | Revision: -



NOTE
 Lateral sewers to be Plastidrain (110 & 160 O.D.) in UPVC and manufactured by Hepworth or similar approved by Yorkshire Water. Demarcation chamber to be polypropylene Non-Entry Inspection Chamber up to 2.0m depth manufactured by Wavin or similar approved by Yorkshire Water to BS EN 13498-1:2003.



N O T E S

- KEY**
- G Gully
 - Storm water manhole
 - Foul water manhole
 - Rain water pipe
 - Foul stack
 - Storm water sewer
 - Foul water sewer
 - Combined sewer
 - Sewer to be abandoned
 - Acso channel or similar approved
 - YG Yard gully

1. For longitudinal sections refer to drawing 374/19/06.
2. No services are to be sited directly over, or within 1m of, an adoptable sewer or manhole.
3. Private drainage connections to adoptable sewers to be via 45° junction.
4. Off site manholes already built must have invert levels checked prior to connection to the off site drainage.
5. Any connections to existing sewers/manholes are to be supervised by Yorkshire Water.
6. All connections to proposed public sewers to be minimum 150mm.
7. Any land drain or water course on site to be diverted as not to pass under proposed buildings. Diversion to be approved and inspected on site by the Local Authority.

Yorkshire Water General Notes

1. All adoptable sewer works and material to be in accordance with "Sewers for Adoption 8th Edition. The relevant British/European and Yorkshire Water's Standards/Addendum and Kitemarked".
2. Manhole covers shall have a clear opening of 600mm and shall be Class D400 BS EN 124 with 150mm deep frames in highway.
3. Filled ground must be filled and consolidated under the supervision and to the satisfaction of Yorkshire Water before any sewer works are carried out.
4. Cover slabs must carry the BS Kitemark or will be rejected by Yorkshire Water inspector. Where the clear opening of the Kitemarked product is different to that of the cover and frame, a loading bearing slab should be fitted above the cover slab to bring the size down to 600x600mm for the Yorkshire Water specified cover size.
5. The adoptable sewers should be a minimum of 1m and manholes 0.5m from kerb faces and service margins.
6. Sewers must have 5 metres clearance from trees and hedges. (Also refer to Figure 2.3 on page 33 in "Sewers for Adoption" 8th Edition for restrictions on tree planting adjacent to sewers).
7. Sewers to be laid in Class "S" bedding (150mm granular bed and surround). Where depth of cover to top of the sewer is less than 1.2m in highways and verges (or less than 900mm in non vehicular access areas) then a concrete slab should be provided above the granular bed and surround.
8. Adoptable sewer pipes to be laid in maximum 3 metre lengths unless there is a specific operational need to lay longer.
9. Plastic channel sections in manholes are not acceptable and clayware is preferable. Plastic channels are difficult to set in concrete and a satisfactory finish cannot be obtained on the benching.
10. The chamber size of manholes with more than one connection in them may need to be increased an increment to accommodate the connections and bands.
11. Yorkshire Water policy is not to accept Type "C" brick manholes. Instead Type "B" manholes with 1200mm dia or 1500mm dia. rings, with the opening sited over the channel where depth of cover to pipe soffit is 1-1.5m shall be used.
12. Surface water and foul rising mains to be provided with marker tape above the rising mains.
13. If plastic pipes are to be used then the following should apply:
 - a. All adoptable sewers to be BS Kitemark (certified to WS 4-35-01).
 - b. Bedding and backfill material to conform to the requirements of Water Industry Specification 4-08-02 (Table A2)
14. Where plastic pipes are proposed for adoptable sewers, structural calculations for the plastic pipes and a site investigation report to prove that the ground condition is suitable for the plastic pipes are to be produced.
15. Where plastic pipes are installed into the ground prior to getting full technical approval, the developer must provide a CCTV survey of the prospectively adoptable sewers and a deformation test (Light-Line test) of the plastic pipes.
16. Demarcation chambers to be a min. 450mm dia chamber for 100mm dia foul & 150mm dia surface water pipes up to 1.2m deep. For depths greater than 1.2m, restricted access opening to 350mm is required for safety reasons.
17. Maximum depth of demarcation chamber to be 2m, where depth exceeds 2m, manhole to be constructed as type B manhole.
18. Yorkshire Water is not obliged to accept filter drain/and drainage runoff into the public sewer network or adoptable drainage system (directly or in-directly). An alternative method of disposal of the land drainage runoff will therefore be required and liaison with the Local Authority, Land Drainage Section with regard to the disposal of the filter drain/and drainage runoff is required.
19. Sulphate resistant cement (C20-D22) and precast concrete products must be used or a laboratory report provided that such precautions are not necessary.
20. Strength of vitrified clay pipes (if used) to be 34kN/m for 1000, 40kN/m for 1500, 45kN/m for 2250 and 72kN/m for 3000. All concrete pipes to be Class 120 concrete to BS EN 1916.

MH C1 to be constructed over existing 3752 combined sewer, it to be confirmed and reported to engineer.

Existing combined sewer to be abandoned and excavated and removed or filled with fly ash to satisfaction of Yorkshire Water.

Existing MH invert level to be confirmed on site and reported to the engineer.

A	MJB	16.03.11	Plot levels revised to suit external works and drainage	ARP
	MJB	07.03.11	Issued for approval	ARP
Rev	By	Date	Revision	CHK

ARP ASSOCIATES
 CHARTERED CONSULTING ENGINEERS

Northwest House • 5/6 Northwest Business Park • Service Hill • Leeds LS6 2QH
 Telephone: 0113 2458498 • Fax: 0113 2443864 • E-Mail: leeds@arpassociates.co.uk

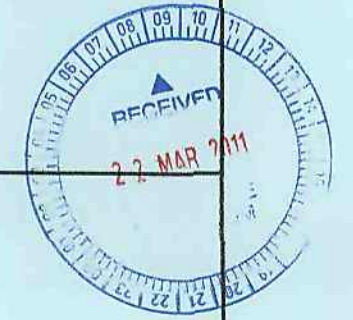
TITLE PROPOSED DRAINAGE LAYOUT (1 of 2)

PROJECT
WOMBWELL MILLS BARNSELY

CLIENT
STRATA HOMES

Scale: 1:250 @ A1 Date: FEB 11 Drawn: MJB
 Chk: ARP

Drg. No. 374/19/SK07.01 Rev A





- KEY**
- Gully
 - Storm water manhole
 - Foul water manhole
 - Rain water pipe
 - Foul stack
 - Storm water sewer
 - Foul water sewer
 - Combined sewer
 - Sewer to be abandoned
 - ▨ Acco channel or similar approved
 - YG Yard gully
1. For longitudinal sections refer to drawing 374/19/06.
 2. No services are to be sited directly over, or within 1m of, an adoptable sewer or manhole.
 3. Private drainage connections to adoptable sewers to be via 45° junction.
 4. Off site manholes already built must have invert levels checked prior to connection to the off site drainage.
 5. Any connections to existing sewers/manholes are to be supervised by Yorkshire Water.
 6. All connections to proposed public sewers to be minimum 150mm.
 7. Any land drain or water course on site to be diverted as not to pass under proposed buildings. Diversion to be approved and inspected on site by the Local Authority.

- Yorkshire Water General Notes**
1. All adoptable sewer works and material to be in accordance with "Sewers for Adoption 6th Edition The relevant British/European and Yorkshire Water's Standard/Addendum and Kitemarked".
 2. Manhole covers shall/must have a clear opening of 600mm and shall be Class D400 BS EN 124 with 150mm deep frame in highways.
 3. Filled ground must be filled and consolidated under the supervision and to the satisfaction of Yorkshire Water before any sewer works are carried out.
 4. Cover slabs must carry the BS Kitemark or will be rejected by Yorkshire Water inspector. Where the clear opening of the Kitemarked product is different to that of the cover and frame, a loading bearing slab should be fitted above the cover slab to bring the size down to 600x600mm for the Yorkshire Water specified cover size.
 5. The adoptable sewers should be a minimum of 1m and manholes 0.5m from kerb faces and service margins.
 6. Sewers must have 5 metres clearance from trees and hedges. (Also refer to Figure 2.3 on page 33 in "Sewers for Adoption" 6th Edition for restrictions on tree planting adjacent to sewers).
 7. Sewers to be laid in Class "S" bedding (150mm granular bed and surround). Where depth of cover to top of the sewer is less than 1.2m in highways and verges (or less than 900mm in non vehicular access areas) then a concrete slab should be provided above the granular bed and surround.
 8. Adoptable sewer pipes to be laid in maximum 3 metre lengths unless there is a specific operational need to lay longer.
 9. Plastic channel sections in manholes are not acceptable and clayware is preferable. Plastic channels are difficult to set in concrete and a satisfactory finish cannot be obtained on the bedding.
 10. The chamber size of manholes with more than one connection in them may need to be increased an increment to accommodate the connections and bends.
 11. Yorkshire Water policy is not to accept type "C" brick manholes. Instead type "B" manholes with 1200mm dia or 1500mm dia. rings, with the opening sited over the channel where depth of cover to pipe soffit is 1-1.5m shall be used.
 12. Surface water and foul rising mains to be provided with marker tape above the rising mains.
 13. If plastic pipes are to be used then the following should apply:
 - a. All adoptable sewers to be BS Kitemark (certified to MS 4-35-01).
 - b. Bedding and backfill material to conform to the requirements of Water Industry Specification 4-08-02 (Table A2).
 14. Where plastic pipes are proposed for adoptable sewers, structural calculations for the plastic pipes and a site investigation report to prove that the ground condition is suitable for the plastic pipes are to be produced.
 15. Where plastic pipes are installed into the ground prior to getting full technical approval, the developer must provide a CCTV survey of the prospectively adoptable sewers and a deformation test (Light-Line test) of the plastic pipes.
 16. Demarcation chambers to be a min. 450mm chamber for 100mm foul & 150mm surface water pipes up to 1.2m deep. For depths greater than 1.2m, restricted access opening to 350mm is required for safety reasons.
 17. Maximum depth of demarcation chamber to be 2m, where depth exceeds 2m, manhole to be constructed as type B manhole.
 18. Yorkshire Water is not obliged to accept filter drain/land drainage runoff into the public sewer network or adoptable drainage system (directly or in-directly). An alternative method of disposal of the land drainage runoff will therefore be required and inson with the Local Authority, Land Drainage Section with regard to the disposal of the filter drain/land drainage runoff is required.
 19. Sulphate resistant cement (C20-DC2) and precast concrete products must be used or a laboratory report provided that such precautions are not necessary.
 20. Strength of vitrified clay pipes (if used) to be 34kN/m for 1000, 40kN/m for 1500, 45kN/m for 2250 and 72kN/m for 3000. All concrete pipes to be Class 120 concrete to BS EN 1916.

Rev	By	Date	Revision	Chk
A	MJB	16.03.11	Plot levels revised to suit external works and drainage	ARP
	MJB	07.03.11	Issued for approval	ARP

ARP ASSOCIATES
CHARTERED CONSULTING ENGINEERS

Northwest House • 5/6 Northwest Business Park • Servia Hill • Leeds LS2 3QH
Telephone: 0113 2459499 • Fax: 0113 2443864 • E-Mail: leeds@arpassociates.co.uk

TITLE **PROPOSED DRAINAGE LAYOUT**
(2 of 2)

PROJECT **WOMBWELL MILLS BARNSELY**

CLIENT **STRATA HOMES**

Scale 1:250 @ A1 Date FEB 11 Drawn MJB Chk. ARP

Drg. No. 374/19/SK07.02 Rev A

NOTE
Lateral sewers to be Plastorin (110 & 180 O.D.) in uPVC and manufactured by Hepworth or similar approved by Yorkshire Water. Demarcation chamber to be polypropylene Non-crisp inspection Chamber up to 2.0m depth manufactured by Wavin or similar approved by Yorkshire Water to BS EN 13596-1:2003.

