

SLA Design LLP  
 The Link Building  
 24A St Andrew's Road  
 Sheffield  
 South Yorkshire  
 S11 9AL

**Tel:** (+44) 0114 2585603  
**Fax:** (+44) 0114 2362918  
**E-mail:** enquiries@SLAdesign.co.uk

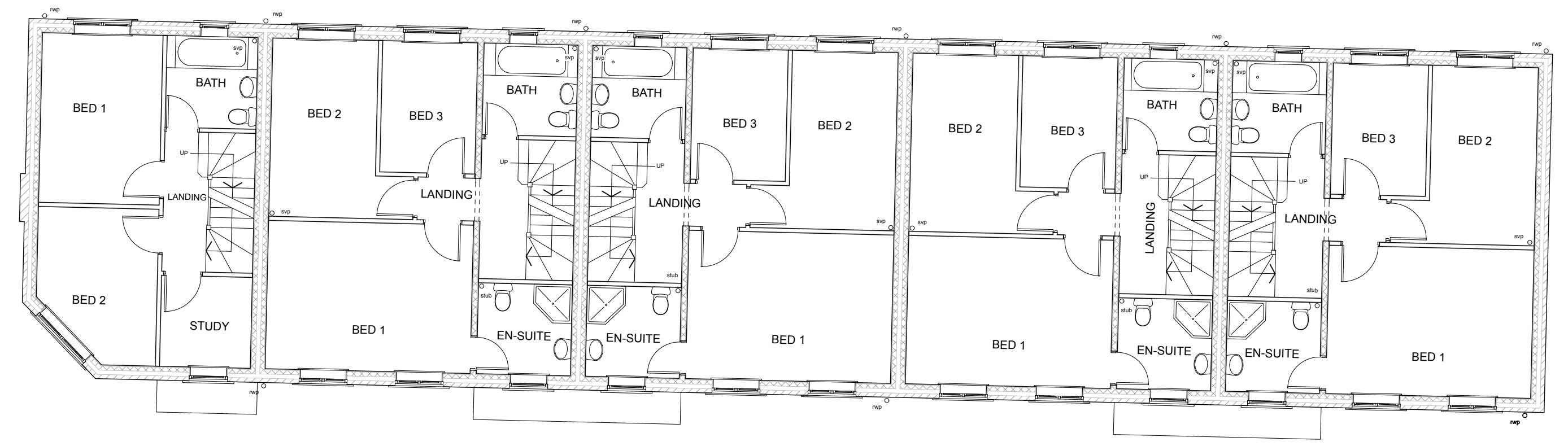
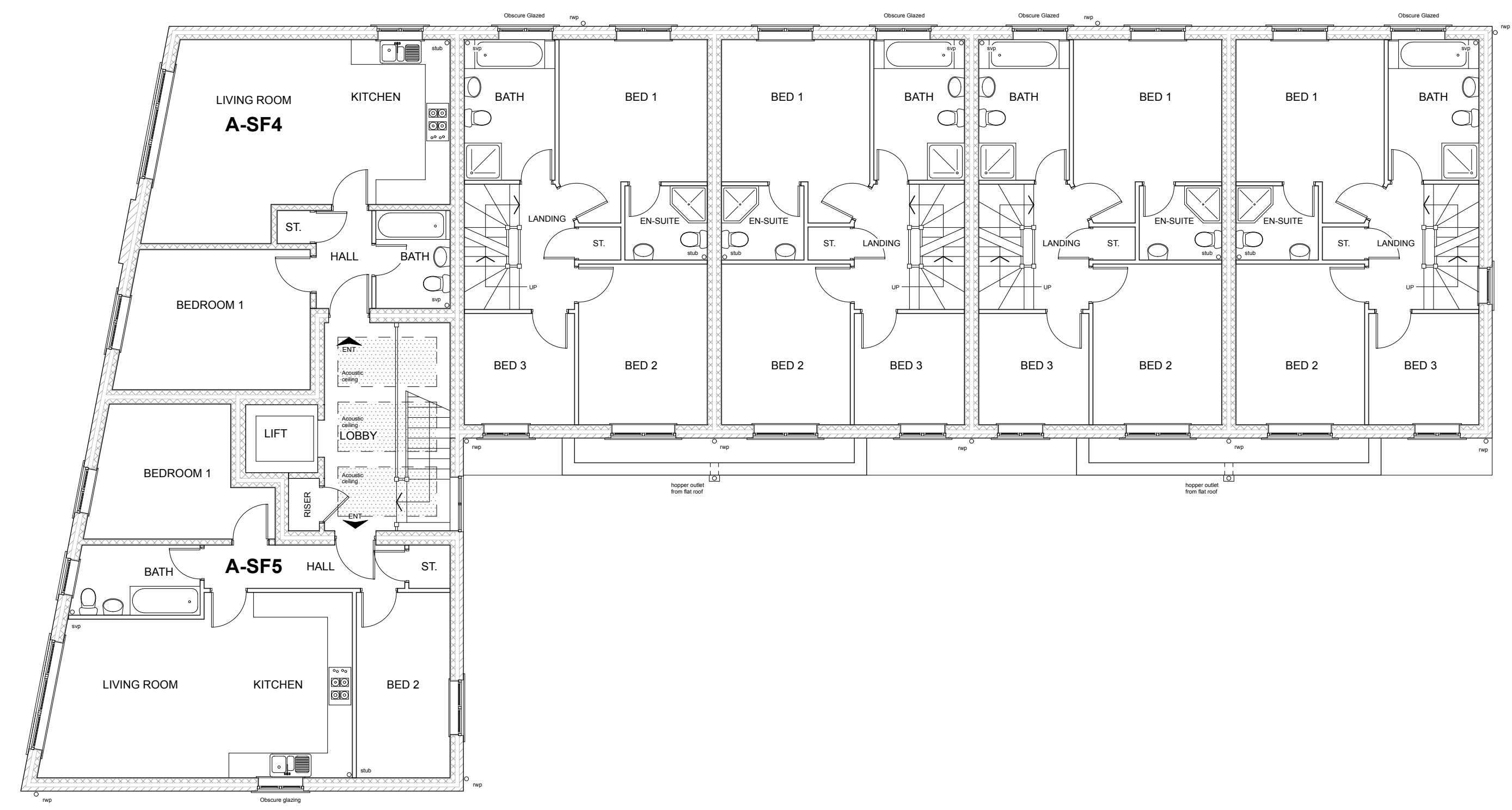
[www.SLAdesign.co.uk](http://www.SLAdesign.co.uk)

**SLA Design LLP**  
 Reg. No. 12282579 Registered in England and Wales  
 Reg. Office: 39-43 Bridge Street, Swinton, Westborough, South Yorkshire S64 6AP

SLA DESIGN:  
 - All rights reserved by SLA DESIGN  
 - No part of this publication may be reproduced, stored in any retrieval system or transmitted in any form or by any means without the prior permission of SLA DESIGN

Do not scale off drawing  
 All dimensions to be checked on site

Revision :                      Date :  
**Rev A - 13/10/13**  
 Concrete frame omitted from block A, minor alterations to internal layouts.  
**Rev B - 26/02/14**  
 Recessed entrance doors omitted from Block B, canopies added over entrance doors.



Client:



Project No:  
**10/064**

Project Title:  
 The Saw Mill  
 The Green  
 Penistone  
 S36 6BG

Drawing No:  
**102**

Drawing Title:  
 Proposed  
 Second Floor  
 Plan

Revision:  
**B**

Drawn by:                      Approved By:  
 PH                                      PH

Date:  
 October 2013

Scale:  
 1:100@A1

Drawing Status :                      **PLANNING**