

Russell Mills
Senior Engineer
Homes by Honey
russell.mills@homesbyhoney.co.uk

Our Ref: Barnborough Lane, Goldthorpe
Contact: Jim MacQueen, Director – Heritage & Environmental Planning
Direct Dial: 07789 636364

Date: 14th November 2023

CONDITION 27 LIGHTING DETAILS

Instruction

This letter has been produced on behalf of Homes by Honey in respect of the Site at Barnburgh Lane, Goldthorpe. It has been produced as a series of documents to discharge the outstanding planning conditions relating to biodiversity at the Site.

Site Description

The Site is located at Barnburgh Lane, Goldthorpe, South Yorkshire. The Site itself comprises an arable field, with a small area of scrub within the eastern corner of the Site. The Site is approximately 3.1 hectares (ha) in extent and is centred on grid reference SE 46905 03975. The land is generally flat with a slight upward incline to the west and situated approximately between 39 and 33 metres above ordnance datum (m AOD).

The location of the Site is shown below in **Figure 1**.

Whitehall Waterfront
2 Riverside Way
Leeds
LS1 4EH

Tel: 0113 233 8000

INVESTORS IN PEOPLE®
We invest in people Platinum

leeds@bwbcconsulting.com
www.bwbconsulting.com

Registered office address: 5th Floor, Waterfront House, 35 Station Street, Nottingham NG2 3DQ

Registered in England and Wales Company No. 5265863

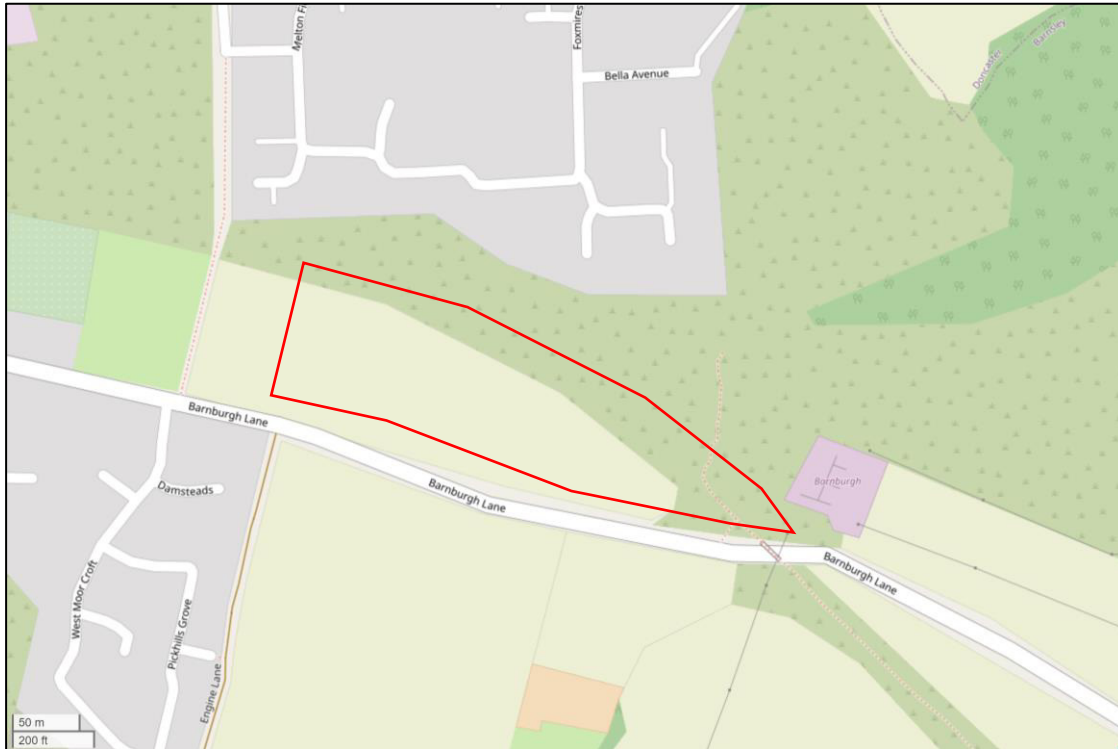


Figure 1: Site Location Plan

Scope of Works

This letter has been produced to provide details relating to planning Condition 27 of Planning Application 2023/0195 for a 'Residential development of 95no. dwellings (Amended Plan)'. Condition 27 relates to the lighting to be installed at the Site as follows:

"Notwithstanding the submitted details, before above ground works commence, details of external/internal lighting shall be submitted to and approved in writing by the Local Planning Authority. The details shall be provided by a suitably qualified ecologist and clearly demonstrate that lighting will not adversely impact wildlife using key corridors, foraging and commuting features and roosting sites. The details shall include, but are not limited to, the following:

- A drawing showing sensitive areas, dark corridors and buffer areas;
- Technical description, design or specification of external lighting to be installed including shields, cowls or blinds where appropriate;
- A description of the luminosity of lights and their light colour;
- A drawing(s) showing the location and where appropriate the elevation, height and luminance of the light fixings;

- *Methods to control lighting control (e.g. timer operation, Passive Infrared Sensors (PIR)); and*
- *Lighting contour plans, both horizontal and vertical where appropriate, taking into account hard and soft landscaping.*

All external/internal lighting shall be installed in accordance with the specifications and locations set out in the approved details. They shall be maintained thereafter in accordance with these details.

Reason: To conserve and enhance biodiversity in accordance with Local Plan BIO1 Biodiversity and Geo Diversity and the SPD's Biodiversity and Geodiversity, and Trees and Hedgerows".

Lighting during the Construction Phase

Any lighting utilised during the construction phase of the development will follow best practice guidelines outlined in Bats and Artificial Light at Night (2023) to maintain suitable foraging and commuting routes along the Biodiversity Protection Zones, as specified within the Construction Environmental Management Plan (Biodiversity) (BWB, 2023) and provided in **Figure 2**. These zones should remain a dark corridor at all times and if any works are required within close proximity then floodlights should be directed away from this area and no night works should take place within close proximity.

Post-Development Lighting Design

The lighting plan has been designed to minimise any lighting on the Public Open Space (POS) areas and along the areas of habitats outside of the Site along the northern and eastern Site boundary where the disused railway is located. See **Figure 2** for the drawing showing sensitive areas, dark corridors and buffer areas and **Appendix 1** for the Lighting contour plan produced by Barnsley Metropolitan Borough Council.



Figure 2: Light Sensitive Areas

The initial lighting plan featured lighting within the POS area on the eastern section of the Site. This has been removed to provide a dark area suitable for nocturnal wildlife.

Lamp LN9 located adjacent to the northern Site boundary initially cast lighting onto the adjacent habitats up to 1lux. This has been changed to include louvers so that no more than 0.2lux spills onto these habitats in line with current Artificial Light at Night guidance from BCT (2023).

Post-Development Lighting Specifications

The lighting columns proposed are 6M galvanised steel columns with Urbis Axia 3.1 lantern 3.3Klm complete with electronic PEC and 14 metres cable or 6M galvanised steel hinged column with Urbis Axia 3.1 5270 1.06Klm lantern complete with electronic PEC and 14 metres cable.

LED lighting will be used which emit no UV frequencies of light. The LEDs will be warm white in colour and be 2700kelvin. The light fixings will be 6m in height with a lumen output of 3.15Klm and the luminaries will be mounted at 0°.

The lighting will be photocell down to dusk and each lamp will automatically turn on or off dependant on the levels of lighting at dawn or dusk.

Louvers will be attached to two of the lighting columns to the north of the Site. These louvers will reduce the lighting spill onto the adjacent habitats to the north.

The lighting specified for the development is considered to be in line with current guidance from BCT (2023).

References

- Bat Conservation Trust (2023) Bats and Artificial Lighting at Night. Guidance Note GN08/23. Bat Conservation Trust and Institute of Lighting Professionals. Rugby, Warwickshire.
- BWB (2023) Ecological Impact Assessment: Barnburgh Lane, Goldthorpe. BWB, Leeds.
- BWB (2023) Biodiversity Enhancement and Management Plan (BEMP): Barnburgh Lane, Goldthorpe. BWB, Leeds.
- BWB (2023) Construction Ecological Management Plan (Biodiversity) (CEMP (B)): Barnburgh Lane, Goldthorpe. BWB, Leeds.
- Chartered Institute of Ecology and Environmental Management (2017) Guidelines for Ecological Report Writing. CIEEM, Winchester.

Appendices

Appendix 1 - Lighting Contour Plan



PROJECT NAME:
Barnburgh Lane

SCALE: 1:1250	DATE: 30 October 2023
------------------	--------------------------