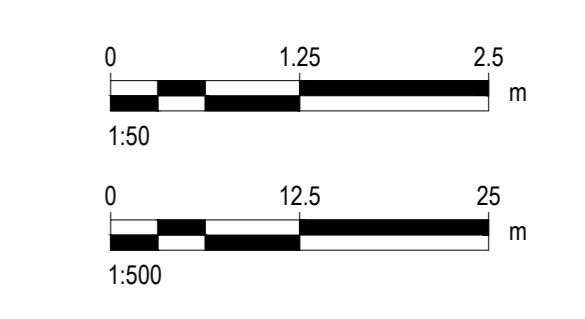
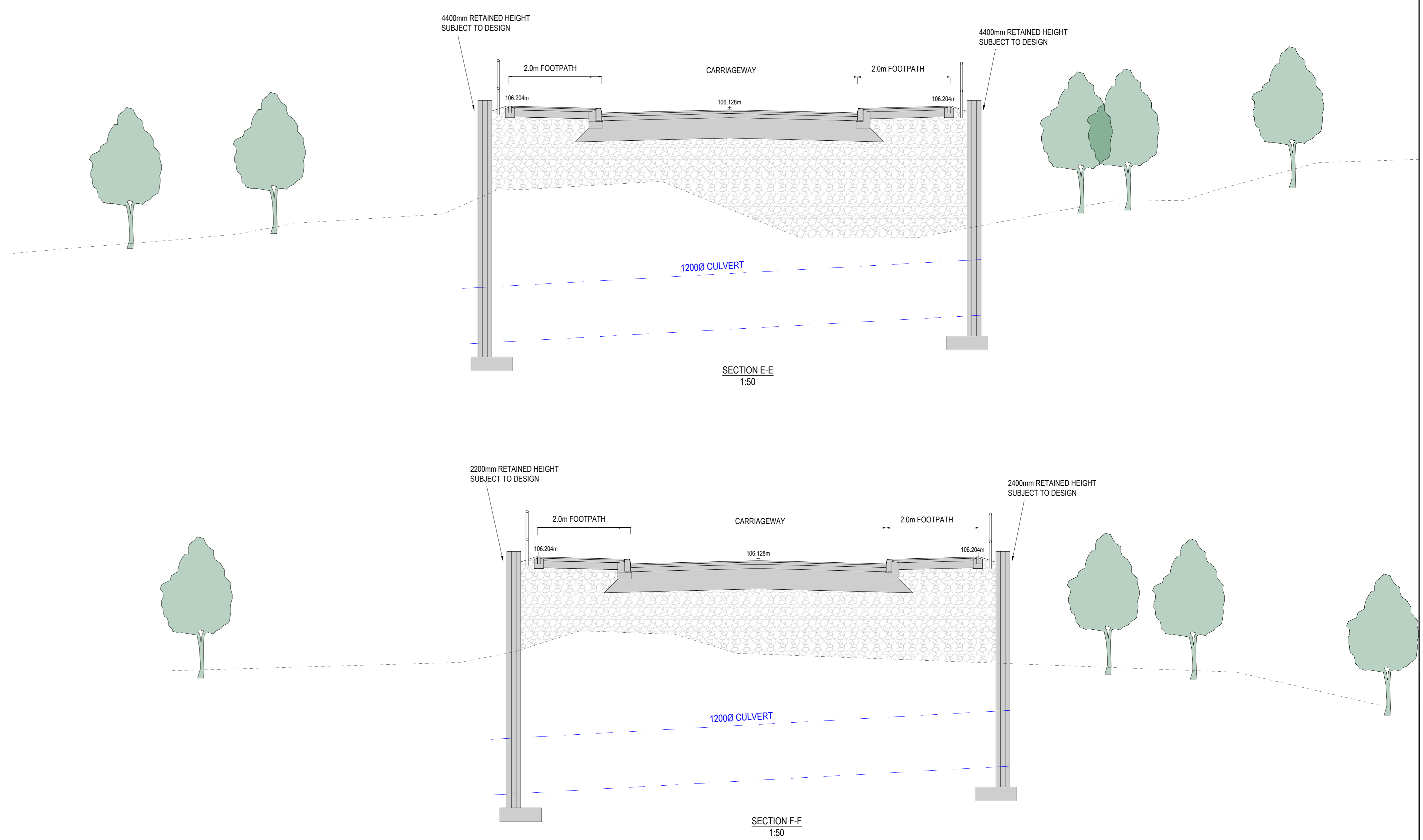


Road 1

Datum: 99.000M AOD

CHAINAGE (m)	EXISTING LEVELS (m)	PROPOSED CENTRELINE LEVELS (m)	LEVELS ON LEFT HAND CHANNEL (m)	LEVELS ON RIGHT HAND CHANNEL (m)	HORIZONTAL ELEMENTS	VERTICAL ELEMENTS
100.000	100.000	100.000	100.000	100.000	STRAIGHT LENGTH = 34.780m	GRADIENT -1.5% (1 in 66) LENGTH = 40.726m
100.500	100.500	100.500	100.500	100.500	R = 52.750 L = 32.858	R = 52.750 L = 32.858
101.000	101.000	101.000	101.000	101.000	STRAIGHT LENGTH = 26.437m	K = 8.000 L = 87.279
101.500	101.500	101.500	101.500	101.500	R = 44.204 L = 34.443	GRADIENT 4.8% (1 in 20) LENGTH = 15.150m
102.000	102.000	102.000	102.000	102.000	STRAIGHT LENGTH = 60.765m	K = 9.000 L = 81.174
102.500	102.500	102.500	102.500	102.500		GRADIENT 1.1% (1 in 83) LENGTH = 44.956m



PI3	21.05.24	ROAD ALIGNMENT AMENDED	NO
PI2	14.05.24	REDLINE ADDED	NO
PI1	25.04.24	FIRST ISSUE	NO

© This drawing is the property of Queensberry Design Limited and the information can only be reproduced with their prior permission.

QUEENSBERRY DESIGN
 CIVIL ENGINEERING CONSULTANTS
 QUEENSBERRY DESIGN ENGINEERS LTD
 SUITE 10A, BRIMCOMBE COURT, SELBY ROAD,
 STONING, LEAFS, LE19 1JH
 01530 440100
 www.queensberrydesign.co.uk

Client: **KEEPMOAT**

Project: **KERESFORTH ROAD
DODWORTH
BARNSELY**

Title: **PROPOSED SITE ACCESS
CONSTRUCTION SECTIONS
SHEET 2**

Drawn: **ND** Checked: **DM** Date: **24.04.2024**

Drawing Number: **0010-QD-XX-S-DR-C-00-02**

Drawing Status: **INFORMATION** Scale: **1:500/100 - A0** Page: **PO3**