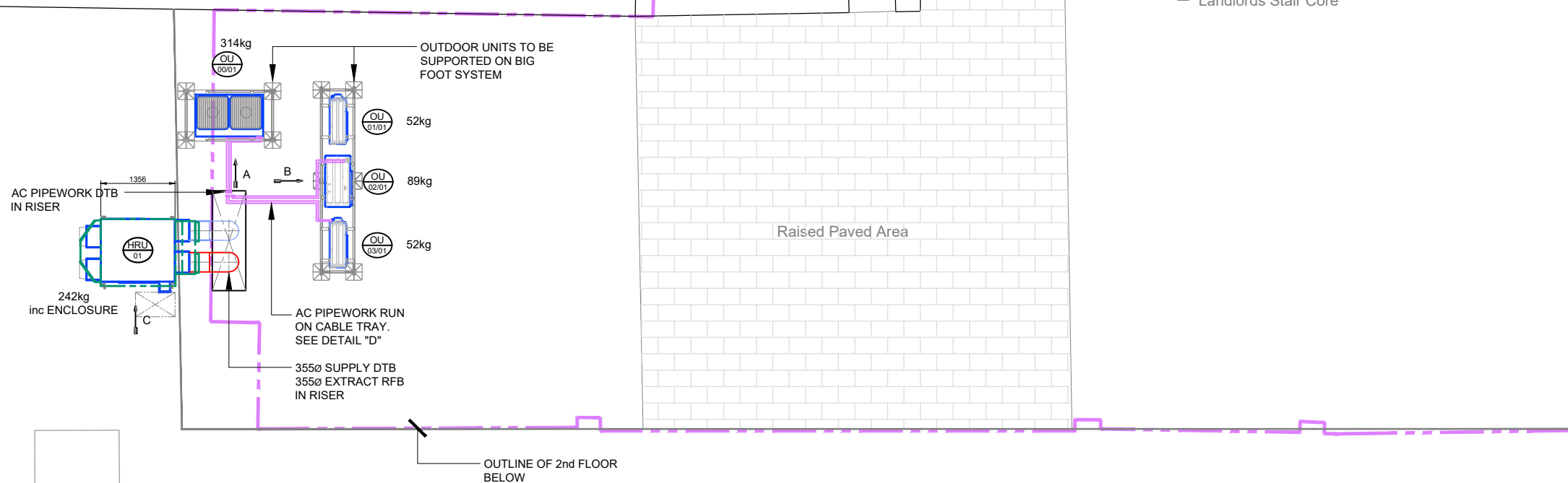
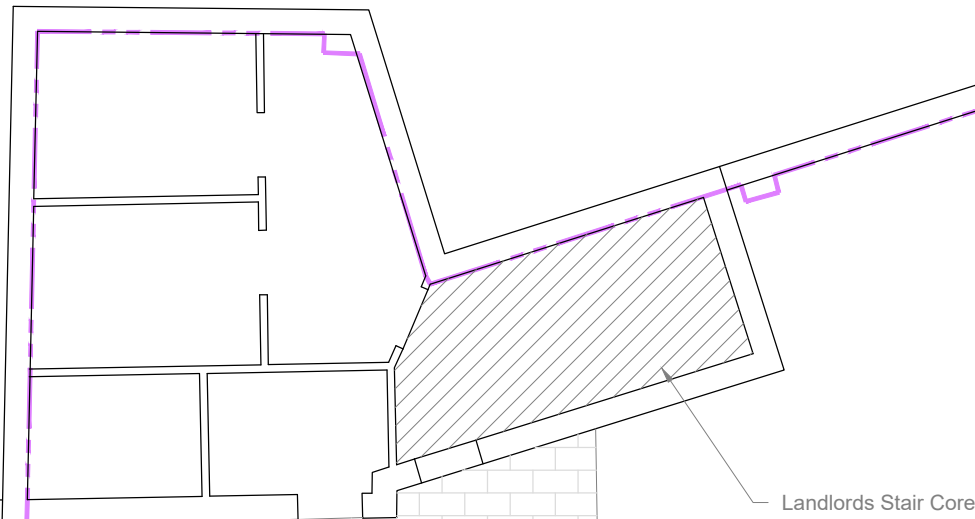


DETAIL "D"
Scale NTS

BURLINGTON ARCADE



NOTES

- DO NOT SCALE FROM THIS DRAWING. ALL DIMENSIONS ARE TO BE VERIFIED ON SITE PRIOR TO COMMENCEMENT OF THE WORKS.
- THIS DRAWING IS TO BE READ IN CONJUNCTION WITH THE RELEVANT CONTRACT DOCUMENTS.
- SUPPLY AND INSTALLATION OF ALL INTERCONNECTING REFRIGERATION PIPEWORK TO BE CARRIED OUT IN ACCORDANCE WITH SECTION 4, PART 1 OF THE SAFETY CODE FOR REFRIGERATION SYSTEMS AND TO BS EN 378-4:206+A1:2020 SPECIFICATION.
- ALL COPPER PIPE UP TO 1 1/8" (28mm) O/D SHALL BE FABRICATED FROM REFRIGERANT QUALITY TUBE TO BS EN 1056, TABLE 2 - MATERIAL DESIGNATION C106. TUBE SHALL BE FULLY ANNEALED UP TO 7/8" (22mm) O/D ONLY.
- ALL DUE CONSIDERATION AND ALLOWANCES TO BE TAKEN TO KEEP PIPEWORK CLEAN AND DRY DURING INSTALLATION WORKS, ENSURING ALL PIPEWORK UNFINISHED ENDS ARE CAPPED OFF AT ALL TIMES.
- THE NUMBER OF JOINTS, BENDS AND SETS ARE TO BE KEPT TO A MINIMUM. BUTT JOINTS WILL NOT BE ACCEPTED, PROPERLY SWAGED JOINTS MUST BE FORMED. BENDS AND SETS ARE TO BE MACHINE PULLED TO AN APPROVED RADIUS WHERE POSSIBLE.
- FLARED JOINTS MUST ONLY BE USED WHEN CONNECTING TO THE MANUFACTURER'S EQUIPMENT. BRAZING SHALL BE CARRIED OUT IN ACCORDANCE WITH BRITISH REFRIGERATION ASSOCIATION SPECIFICATION AT ALL TIMES, WHEN BRAZING, A SMALL AMOUNT OF DRY NITROGEN MUST BE PURGED THROUGH THE PIPE TO PREVENT OXIDATION AND SCALING INTERNALLY. ANY COMPONENT SUSCEPTIBLE TO HEAT DURING THE BRAZING PROCESS THAT MAY BE DAMAGED MUST BE PROTECTED. SOFT SOLDER SHALL NEVER BE USED FOR JOINTING OF REFRIGERATION PIPEWORK.
- ALL COMPLETED R410A SYSTEMS WILL BE STRENGTH AND LEAK TESTED WITH DRY NITROGEN TO BS EN 378:2008. THE VENTILATION INSTALLATION SHALL CONFORM TO ALL PARTS OF BUILDING REGULATIONS, APPROVED DOCUMENT F.
- THE DUCTWORK INSTALLATION SHALL COMPLY WITH BS 5720 AND THE CONSTRUCTION OF THE DUCTWORK SHALL BE IN ACCORDANCE WITH THE SPECIFICATION FOR SHEET METAL DUCTWORK DW/144 AND DW/TM2.
- FIRE DAMPERS ARE TO BE LOCATED WHERE ANY DUCTWORK PASSES THROUGH A FIRE COMPARTMENT OR WALL. ALL FIRE DAMPERS WILL HAVE A MINIMUM 2 HOUR RATING AND BE COMPLETE WITH BLADES EXTERNAL TO THE DUCT.
- ACCESS AND CLEANING DOORS SHALL BE FITTED IN THE DUCTWORK, AND LOCATED NOT MORE THAN 6 METERS APART. EACH ACCESS DOOR SHALL BE LOCATED IN THE DUCTWORK, SUCH THAT IT IS FULLY ACCESSIBLE, AND ADJACENT TO ALL FIXTURES, FITTINGS AND ANCILLARIES.
- SINGLE BLADE VOLUME CONTROL DAMPERS SUITABLE FOR CIRCULAR DUCT INSTALLATION, SHALL BE FITTED AS INDICATED ON THE DRAWING.
- FLEXIBLE DUCTWORK SHALL BE USED FOR CONNECTING TO AIR GRILLES / DIFFUSERS. LENGTH OF FLEXIBLE NOT TO EXCEED 600mm.
8. ALL GENERAL SUPPLY AND EXTRACT DUCTWORK INDICATED ON THE VENTILATION LAYOUT DRAWING TO BE THERMALLY INSULATED IN ACCORDANCE

PROJECT
 BARCLAYS - BARNSELEY
 Unit 2 10/11 Queen Street
 Barnsley
 South Yorks S70 1SJ. PIM No 22588

TITLE
 ROOF LEVEL
 MECHANICAL LAYOUT

DL
M&E BUILDING SERVICES LTD

GEG
APPROVED CONTRACTOR

UKAS
PRODUCT CERTIFICATION

DL M&E BUILDING SERVICES LTD
KINGS HOUSE
STOTTS PARK
JAMES STREET
WESTHOUGHTON
BOLTON, BL5 3QR
TEL : 01942 842507
E-MAIL : info@dl-bsl.co.uk

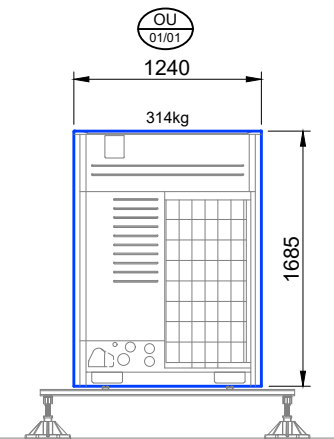
THIS DRAWING IS THE PROPERTY OF DL M&E BUILDING SERVICES LIMITED, AND MUST NOT BE COPIED OR REPRODUCED WITHOUT THE PERMISSION IN WRITING OF DL M&E BUILDING SERVICES LIMITED.

DRAWN	GD	CAD	GD	CHECKED	AP
SCALE	1:100 @ A3		DATE	July 2024	
DRAWING No	E-24-4066-M-R1-2101			REV	P1

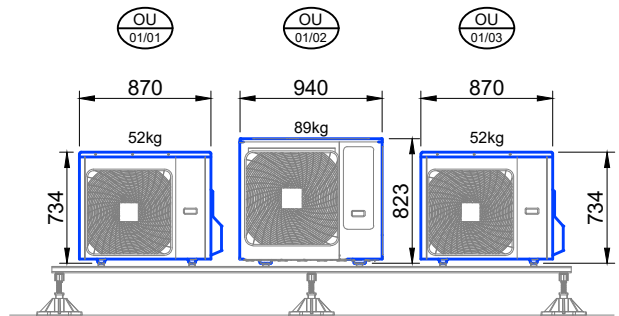
BASED ON LAYOUT
 DH109359_004 Rev -

P1	FIRST ISSUE	GD	19/7/24
----	-------------	----	---------

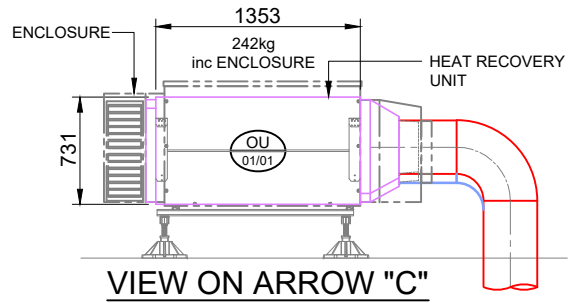
CONTRACTORS PROPOSAL



VIEW ON ARROW "A"
Scale 1:50



VIEW ON ARROW "B"
Scale 1:50



VIEW ON ARROW "C"
Scale 1:50