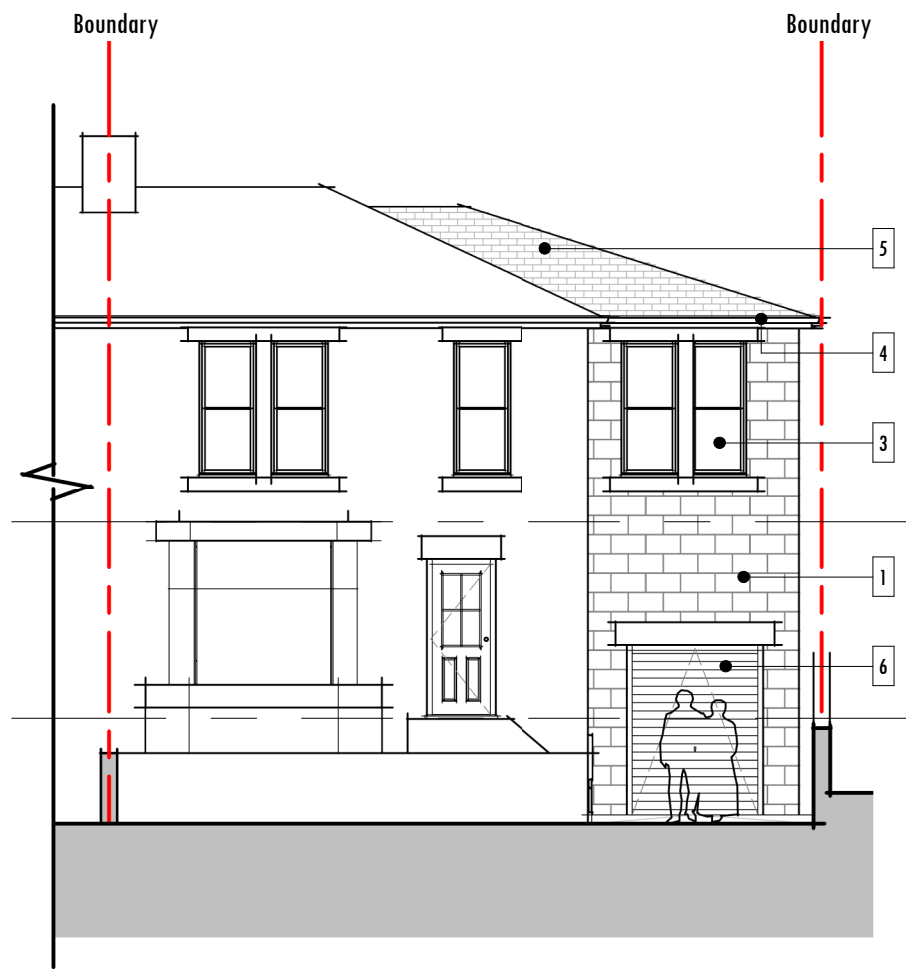
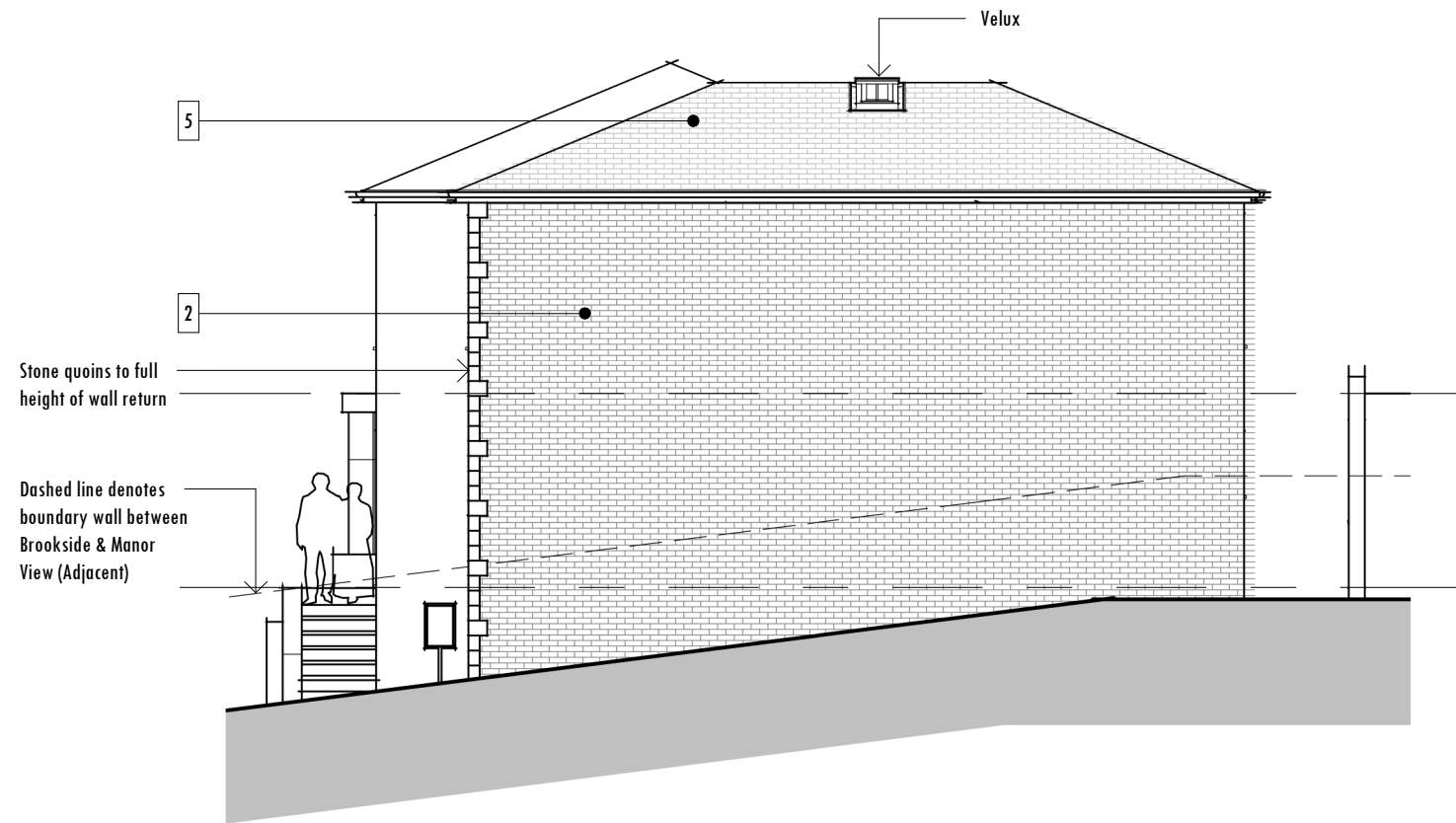


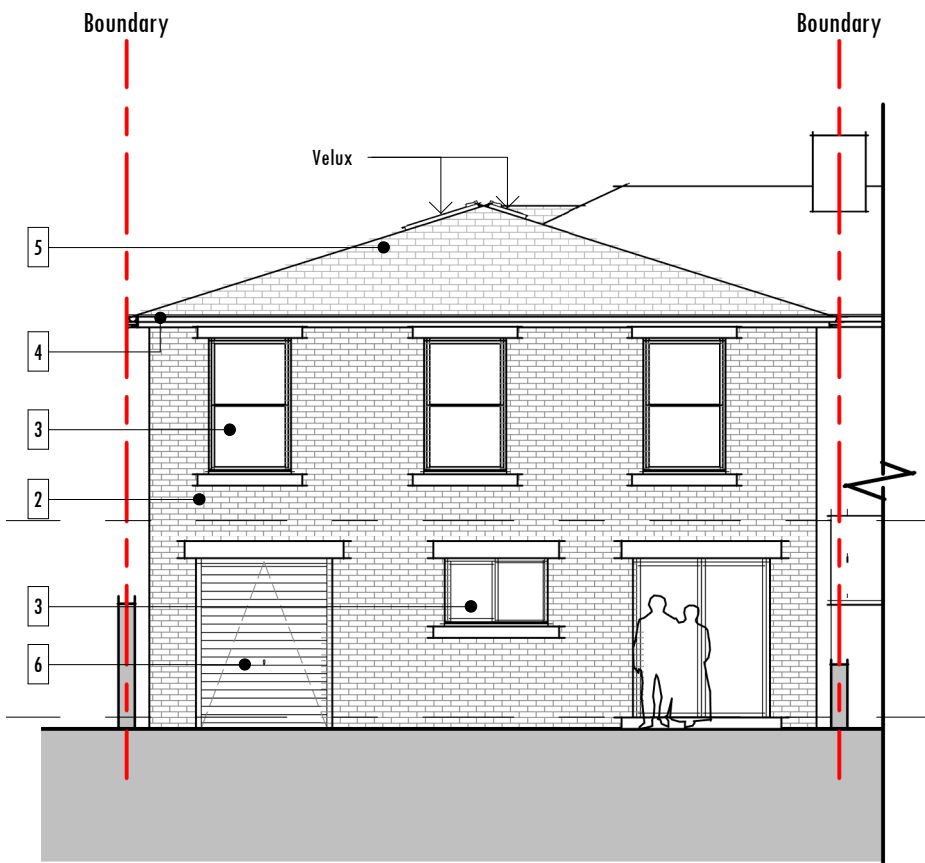
| Rev | Description | Date |
|-----|-------------|------|
|     |             |      |
|     |             |      |



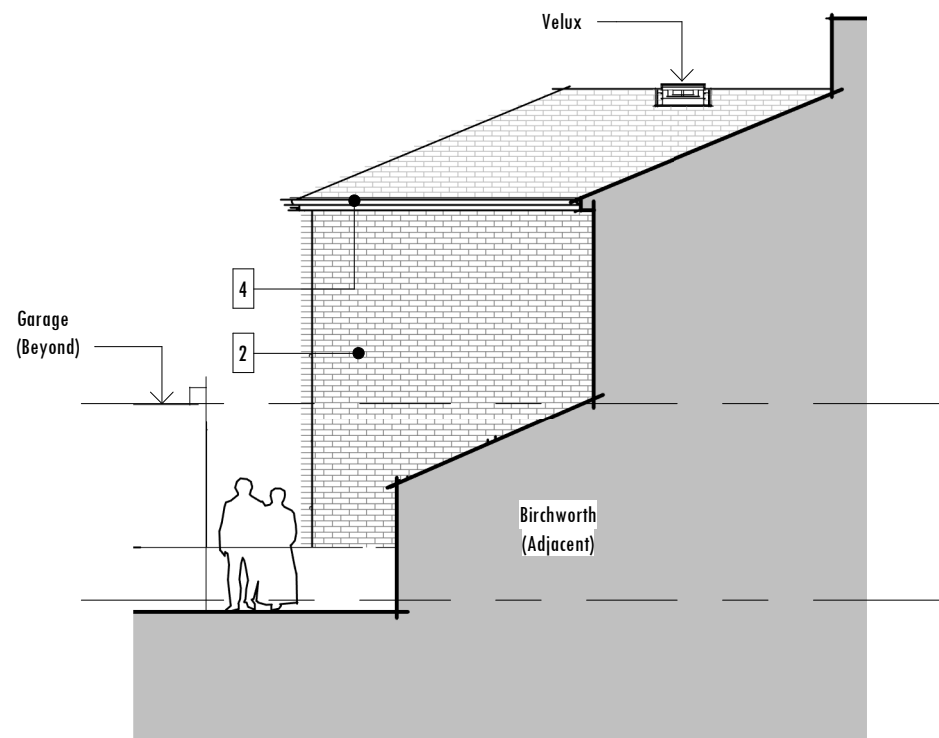
**Front Elevation**  
1 : 100



**Side Elevation**  
1 : 100



**Rear Elevation**  
1 : 100



**Side Elevation**  
1 : 100

**Materials Key**

| Ref | Material   |
|-----|--|
| 1   | Masonry (Stone)<br>Colour: Buff                      |
| 2   | Masonry (Brick)<br>Colour: Red                       |
| 3   | uPVC Double Glazed Doors & Windows<br>Colour: White  |
| 4   | uPVC Guttering, Fascia & Fall Pipes<br>Colour: Black |
| 5   | Slate Tiles<br>Colour: Grey                          |
| 6   | Roller Shutter Door<br>Colour: Black                 |

Note: All new windows to front to have stone cills, mullions & lintels

Note: All new windows to rear to have stone cills & lintels

