

NOTES:
1) All elevations are in meters unless otherwise specified.

2) BLOCKS
3) PARASID
4) Minimum Proposed 1000 (ground or under ground). Grids to be installed at maximum 3 blocks vertical centres with the bottom proposed level to be placed on top of the base of the Diamond Pro Block. Grid lengths to be as shown in sections. Intermediate wall heights to be as shown in the drawings.

5) PARASID
6) Block set. The Contractor is responsible for the selection of the material to ensure compliance with the design and construction requirements.

7) FOUNDATION FOR THE WALLS
8) DRAINAGE
9) DRAINAGE
10) TEMPORARY EXCAVATION

11) HEAVY CONSTRUCTION TRAFFIC CREATING CLOSE TO THE WALLS
12) STATIONARY APPROVAL
13) PEDESTRIAN SAFETY BARRIERS
14) SENSITIVE MOVEMENT OF EXISTING RETAINING STRUCTURES AFFECTING THE PROPOSED WALLS
15) SURROUNDING

16) THE PROPOSED WALLS
17) MINING AND QUARRIES
18) UNKNOWN TOPOGRAPHY BEYOND THE SITE BOUNDARY
19) NOTES ON CALCULATIONS/DRAWINGS
20) NOTES ON CALCULATIONS/DRAWINGS

21) NOTES ON CALCULATIONS/DRAWINGS
22) NOTES ON CALCULATIONS/DRAWINGS
23) NOTES ON CALCULATIONS/DRAWINGS

24) NOTES ON CALCULATIONS/DRAWINGS
25) NOTES ON CALCULATIONS/DRAWINGS
26) NOTES ON CALCULATIONS/DRAWINGS

27) NOTES ON CALCULATIONS/DRAWINGS
28) NOTES ON CALCULATIONS/DRAWINGS
29) NOTES ON CALCULATIONS/DRAWINGS

30) NOTES ON CALCULATIONS/DRAWINGS
31) NOTES ON CALCULATIONS/DRAWINGS
32) NOTES ON CALCULATIONS/DRAWINGS

33) NOTES ON CALCULATIONS/DRAWINGS
34) NOTES ON CALCULATIONS/DRAWINGS
35) NOTES ON CALCULATIONS/DRAWINGS

36) NOTES ON CALCULATIONS/DRAWINGS
37) NOTES ON CALCULATIONS/DRAWINGS
38) NOTES ON CALCULATIONS/DRAWINGS

39) NOTES ON CALCULATIONS/DRAWINGS
40) NOTES ON CALCULATIONS/DRAWINGS
41) NOTES ON CALCULATIONS/DRAWINGS

42) NOTES ON CALCULATIONS/DRAWINGS
43) NOTES ON CALCULATIONS/DRAWINGS
44) NOTES ON CALCULATIONS/DRAWINGS

45) NOTES ON CALCULATIONS/DRAWINGS
46) NOTES ON CALCULATIONS/DRAWINGS
47) NOTES ON CALCULATIONS/DRAWINGS

48) NOTES ON CALCULATIONS/DRAWINGS
49) NOTES ON CALCULATIONS/DRAWINGS
50) NOTES ON CALCULATIONS/DRAWINGS

51) NOTES ON CALCULATIONS/DRAWINGS
52) NOTES ON CALCULATIONS/DRAWINGS
53) NOTES ON CALCULATIONS/DRAWINGS

54) NOTES ON CALCULATIONS/DRAWINGS
55) NOTES ON CALCULATIONS/DRAWINGS
56) NOTES ON CALCULATIONS/DRAWINGS

57) NOTES ON CALCULATIONS/DRAWINGS
58) NOTES ON CALCULATIONS/DRAWINGS
59) NOTES ON CALCULATIONS/DRAWINGS

60) NOTES ON CALCULATIONS/DRAWINGS
61) NOTES ON CALCULATIONS/DRAWINGS
62) NOTES ON CALCULATIONS/DRAWINGS

63) NOTES ON CALCULATIONS/DRAWINGS
64) NOTES ON CALCULATIONS/DRAWINGS
65) NOTES ON CALCULATIONS/DRAWINGS

66) NOTES ON CALCULATIONS/DRAWINGS
67) NOTES ON CALCULATIONS/DRAWINGS
68) NOTES ON CALCULATIONS/DRAWINGS

69) NOTES ON CALCULATIONS/DRAWINGS
70) NOTES ON CALCULATIONS/DRAWINGS
71) NOTES ON CALCULATIONS/DRAWINGS

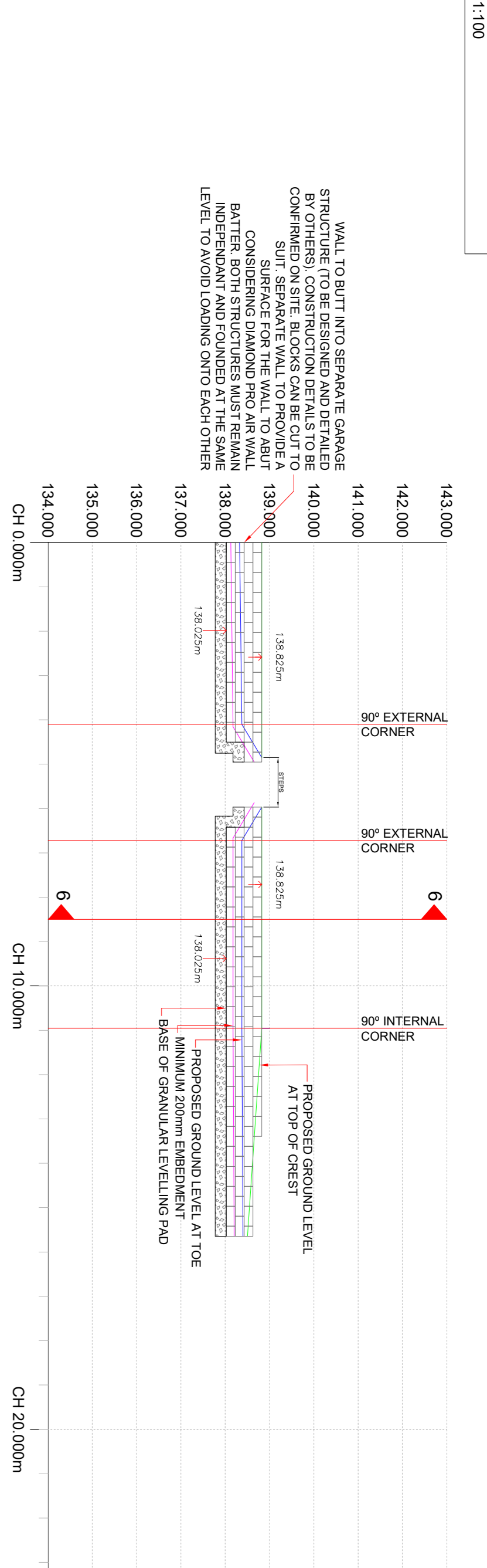
72) NOTES ON CALCULATIONS/DRAWINGS
73) NOTES ON CALCULATIONS/DRAWINGS
74) NOTES ON CALCULATIONS/DRAWINGS

75) NOTES ON CALCULATIONS/DRAWINGS
76) NOTES ON CALCULATIONS/DRAWINGS
77) NOTES ON CALCULATIONS/DRAWINGS

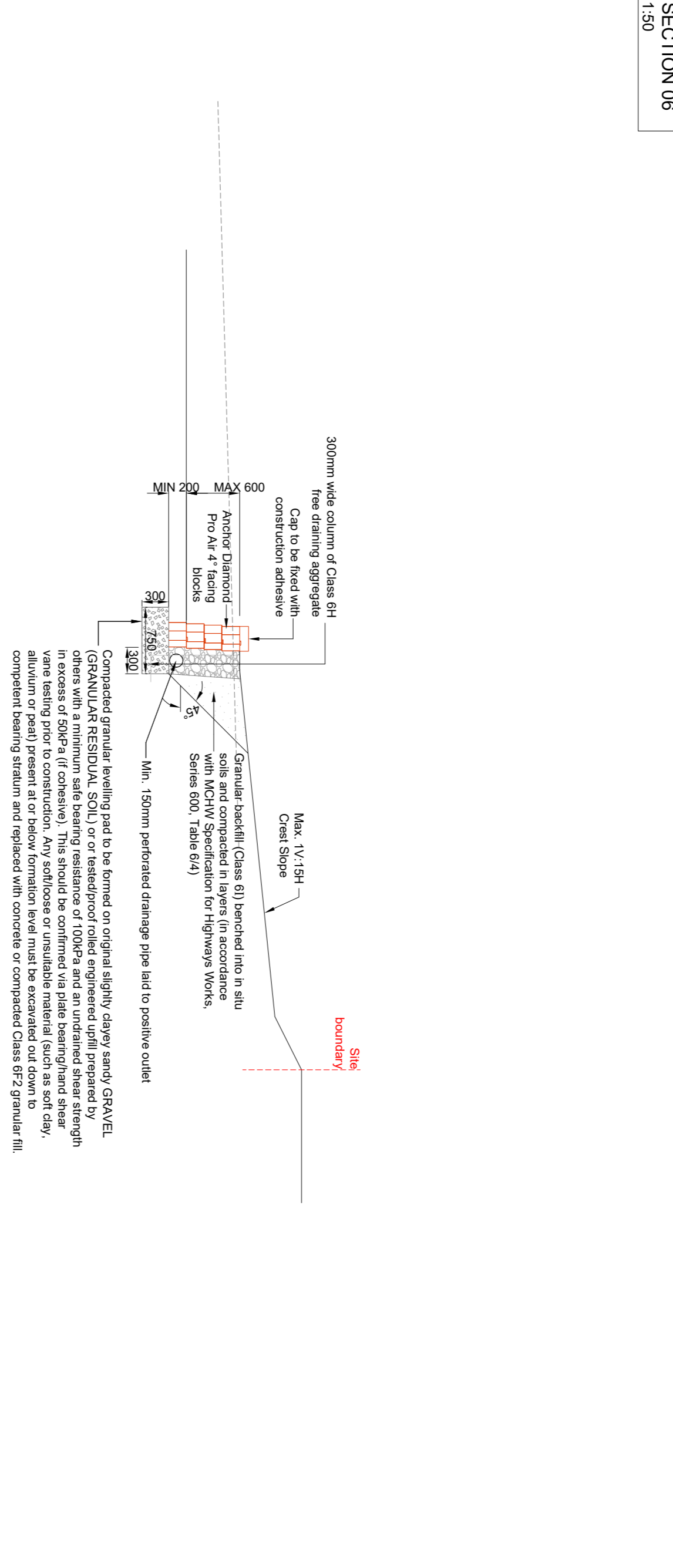
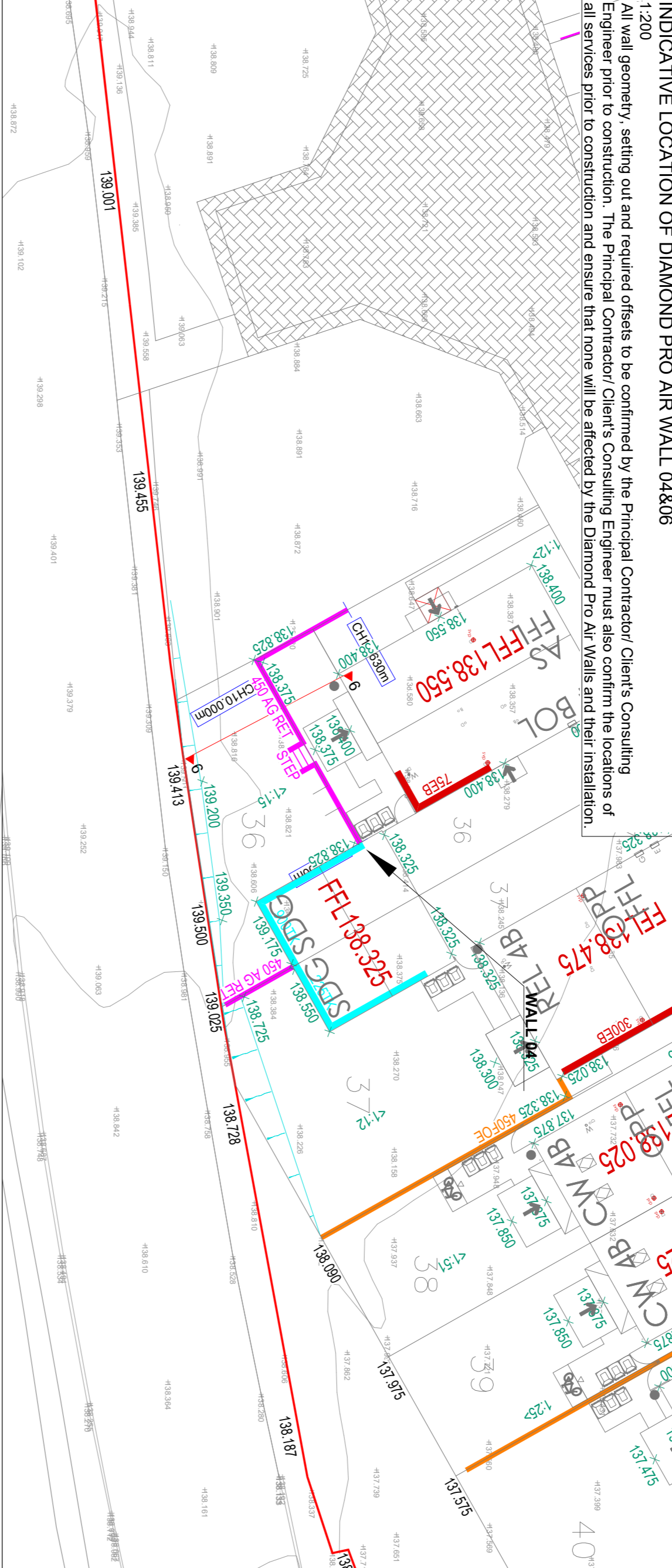
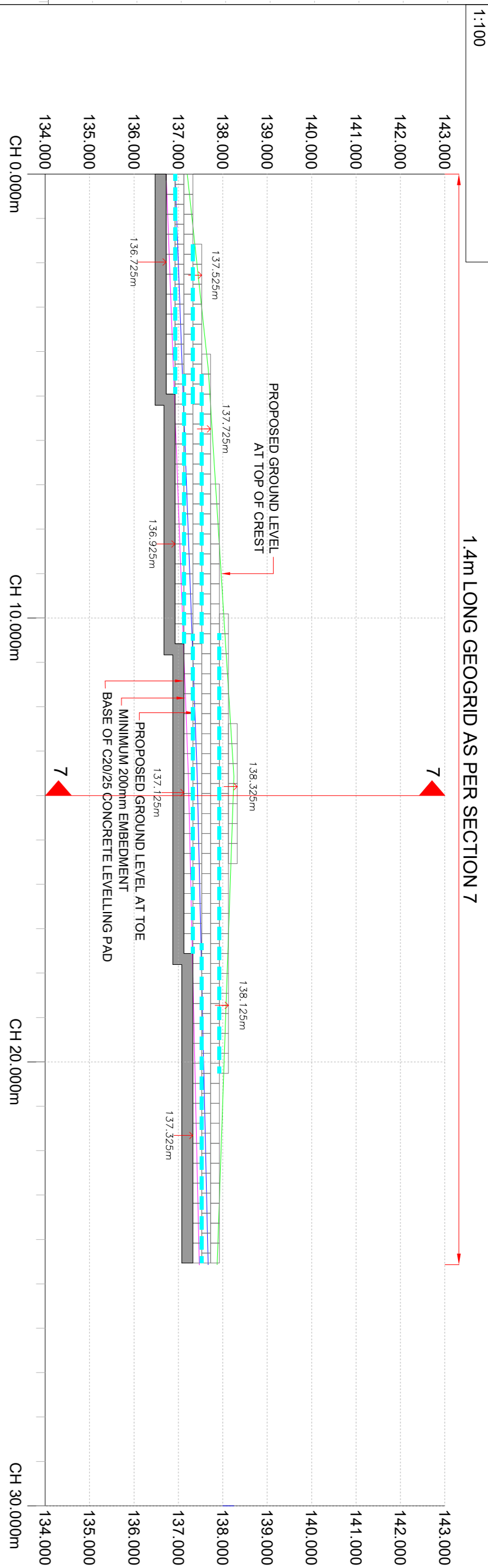
78) NOTES ON CALCULATIONS/DRAWINGS
79) NOTES ON CALCULATIONS/DRAWINGS
80) NOTES ON CALCULATIONS/DRAWINGS

81) NOTES ON CALCULATIONS/DRAWINGS
82) NOTES ON CALCULATIONS/DRAWINGS
83) NOTES ON CALCULATIONS/DRAWINGS

ELEVATION OF WALL 04

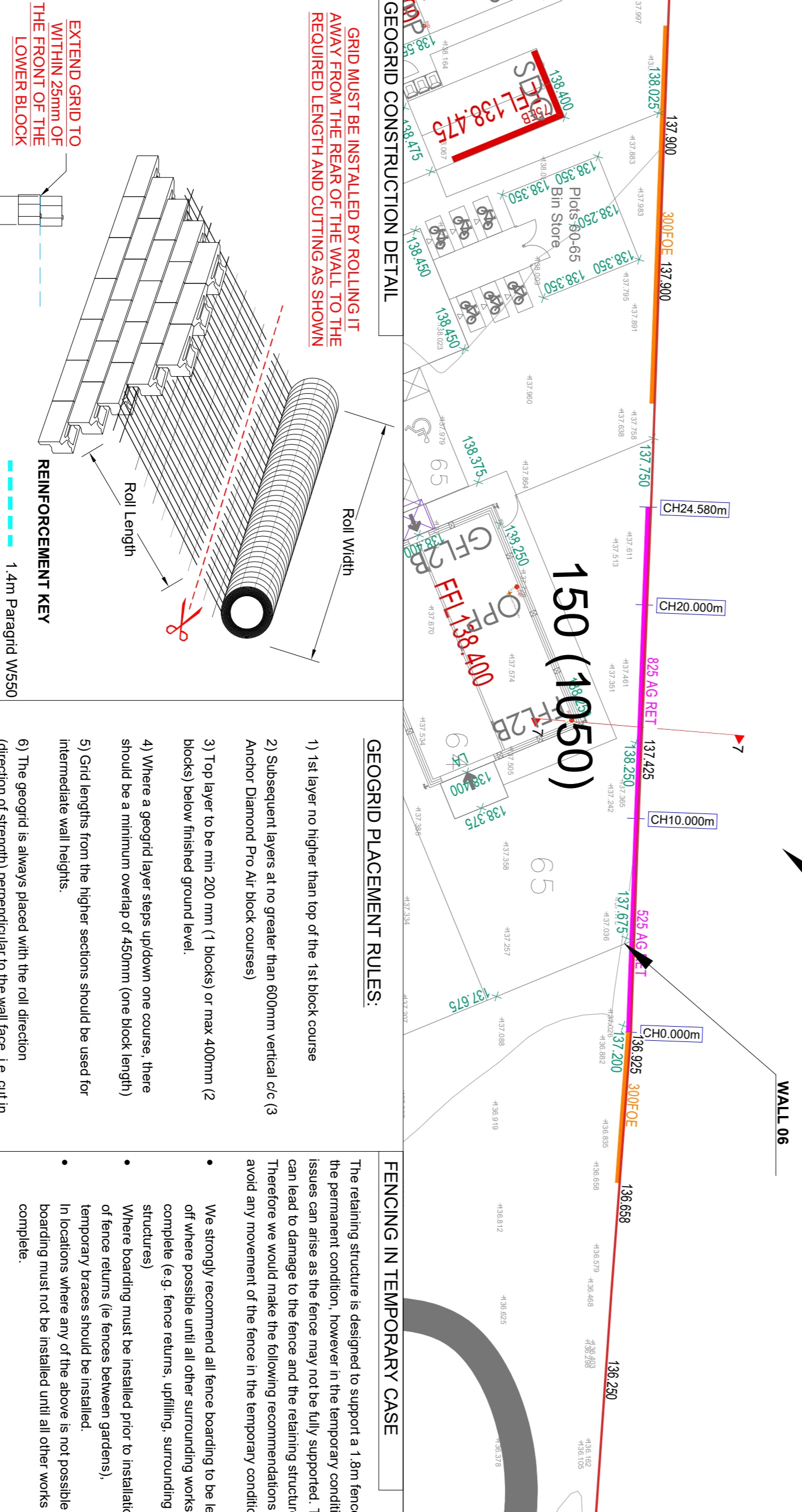


ELEVATION OF WALL 06



INDICATIVE LOCATION OF DIAMOND PRO AIR WALL 04&06
1:200
All wall geometry, setting out and required offsets to be confirmed by the Principal Contractor Client's Consulting Engineer prior to construction. The Principal Contractor Client's Consulting Engineer must also confirm the locations of all services prior to construction and ensure that none will be affected by the Diamond Pro Air Walls and their installation.

SECTION 06
1:50
300mm wide column of Class B4 concrete
Cap to be cast with concrete
Anchor Diamond Pro Air Walling Blocks
Granular backfill (Class B1) benched into in situ soils and compacted in layers in accordance with MCHW Specification for Highway Works, Series 800, Table 8/4)
Max. 1V:1.5H
Crest Slope
Min. 150mm perforated drainage pipe laid to positive outlet
Soil Boundary



SECTION 07
1:50
Assumed maximum 1.8m high Acoustic fence. Design and details to be confirmed by others. Fence posts to be fully concreted into pre installed void construction. Geogrid to be cut locally around fence foundation. See note 12.
300mm wide column of Class B4 concrete
Cap to be cast with concrete
Anchor Diamond Pro Air Walling Blocks
Granular backfill (Class B1) benched into in situ soils and compacted in layers in accordance with MCHW Specification for Highway Works, Series 800, Table 8/4)
Min. 150mm perforated drainage pipe laid to approved outlet
Soil Boundary

DIAMOND PRO AIR WALL 02
GENERAL ARRANGEMENT
Scale @ A1: 25:6276-F1
Drawing Number: SWCS-6276-F1-04
Project Title: HOYLAND, SOUTH YORKSHIRE
Client: BELTWAY
Designed: 05/12/25
Checked: 05/12/25
Drawn: 05/12/25
Approved: [Signature]
Date: 05/12/25
Drawing Status: CONCEPT/PRELIMINARY ONLY FOR APPROVAL
For Construction AS BUILT

GEOMAN
T: +44 (0)2890 664 941
E: geoman@geoman.co.uk
T: 0121 747 0202
E: specifications@sig.uk.com