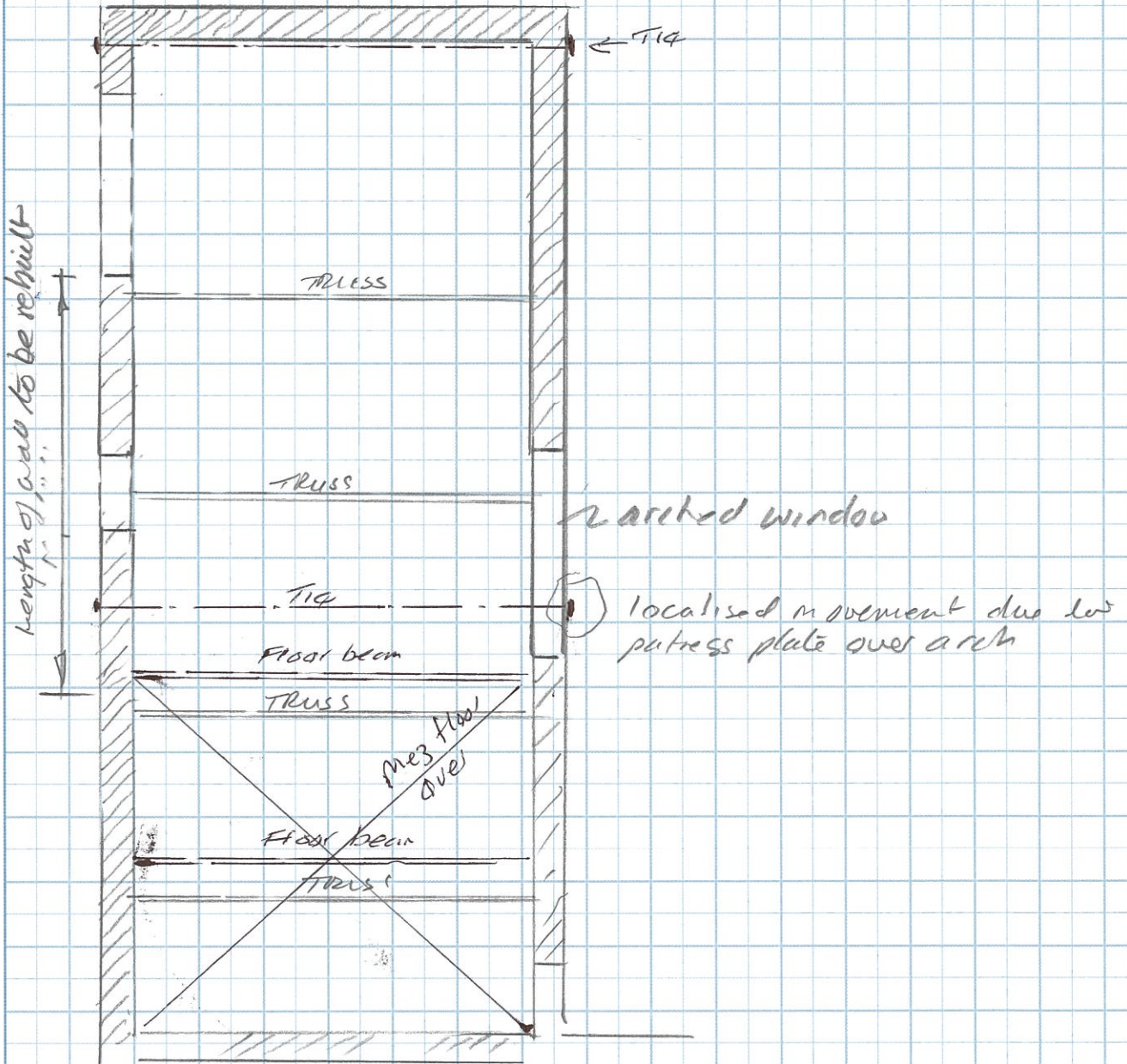

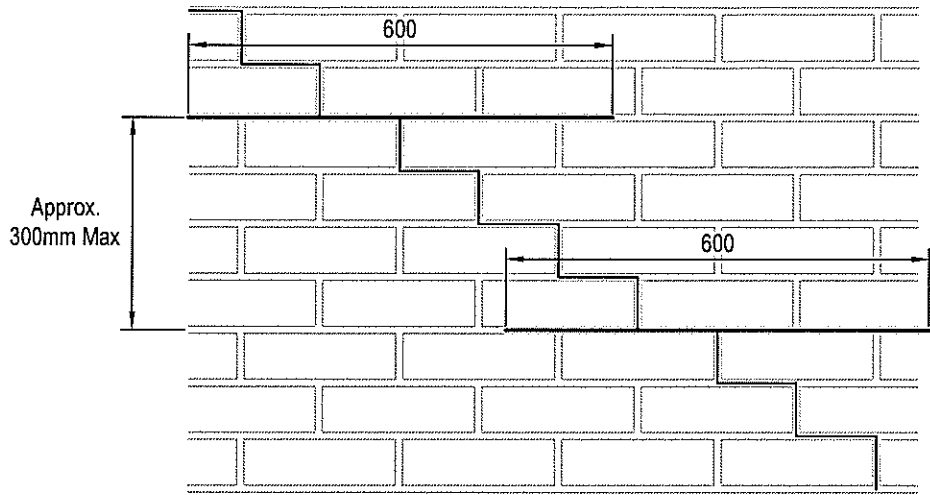


RANAM STONE  
SHEFFIELD  
S36 4 HJ



Beam continues 'L' shaped on plan

 <p>John Newton &amp; Partners <b>jnp group</b> Consulting Engineers www.jnpgroup.co.uk Chesham • Bingham • Harlepool • Leamington Spa • Sheffield Tel: 01928 889555 Email: leamingtonspa@jnpgroup.co.uk</p>	<b>JNP Group Typical Details</b>		Date: 04/17
	Detail No: SK2	Scale: 1:20	
	Detail Title: Typical Crack Repair	User notes: 1. Details to be checked by engineer for specific site	



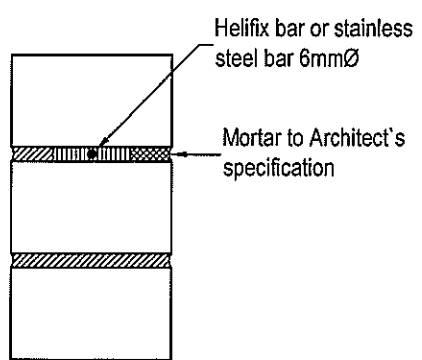
### ELEVATION ON CRACK

Scale 1:10


ELEVATION ON CRACK SHOWING REINFORCEMENT 600mm LONG TO CONSIST OF 6MMØ STAINLESS STEEL THREADED BARS AT 300mm TO 400mm CTS

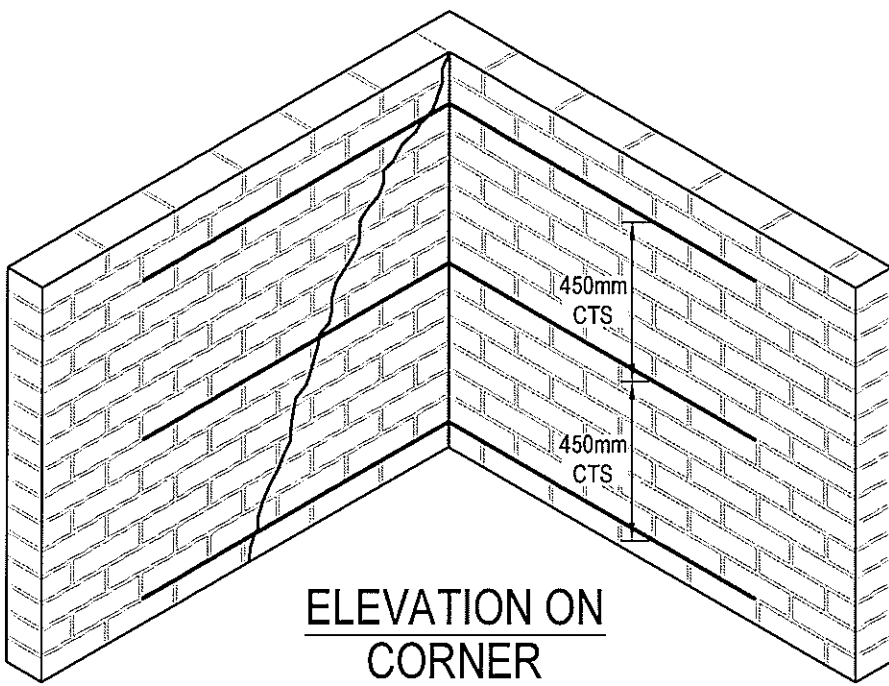
- 1) Rout or drill out mortar joint to approximately 50mm to ensure good brick to brick (stone to stone) bond
  - 2) Remove all dust from the work area by vacuum and using tubing
  - 3) Mix specialist grout in accordance with manufacturers instructions and insert bead of grout to back of joint
  - 4) Insert Stainless Steel bar \*
  - 5) Further bead of epoxy grout leaving 15/20mm space for pointing
- \* 6mm threaded bar or Helibar

Note:  
Epoxy grout by Helifix Ltd (Helibond), Alternatively Thor P by Fischer or Brie Bond by Resin Renovation Ltd



Rev.	Date	Amendment	By	Chk.

 <p>John Newton &amp; Partners <b>jnp group</b> Consulting Engineers www.jnpgroup.co.uk Cresham • Blythhouse • Haleswood • Leamington Spa • Sheffield T: 01926 859255 Email: leamington@jnpgroup.co.uk</p>	<b>JNP Group Typical Details</b>		Date: 04/17
	Detail No: SK1	Scale: 1:20	
	Detail Title: Typical Crack Repair	User notes: 1. Details to be checked by engineer for specific site	



**ELEVATION ON CORNER**  
Scale 1:20

Where possible  
extend reinforcement  
500mm beyond crack

Refer to Sketch SK2 for  
information on masonry  
reinforcement

Note:  
Cracks externally in gable  
wall may be repaired as SK2

*This detail can be  
used around  
external corners*

Rev.	Date	Amendment	By	Chk.