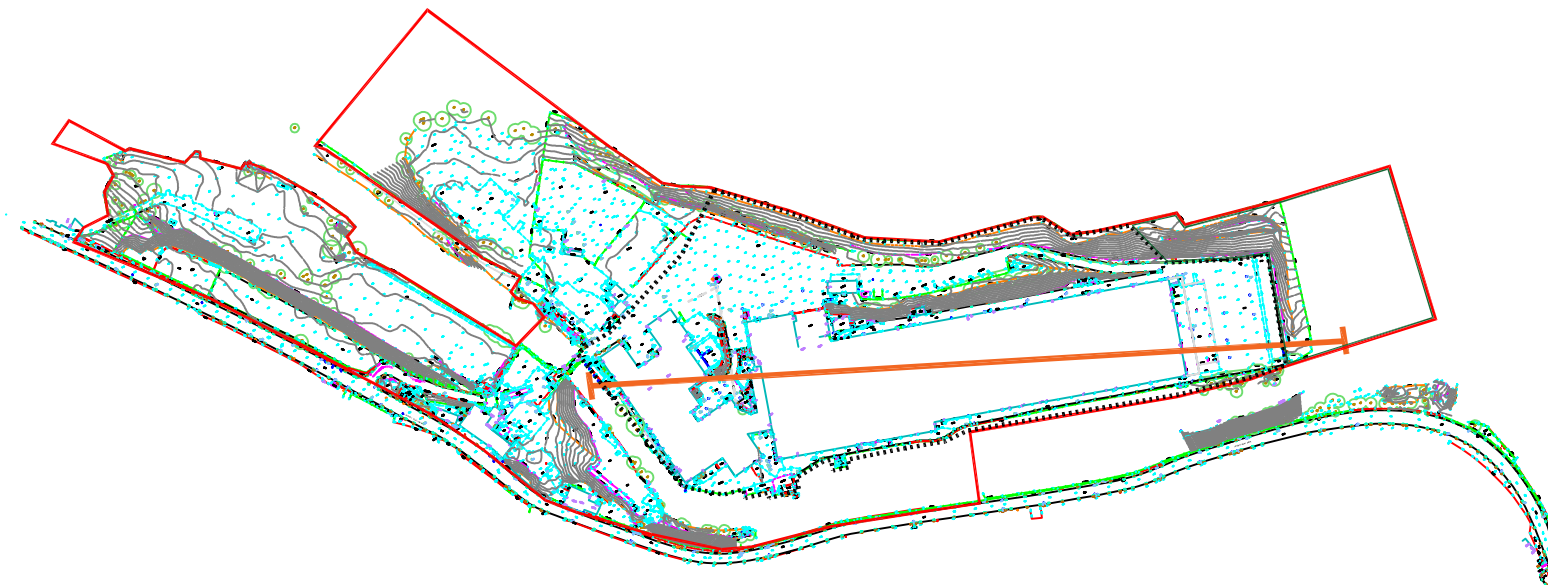


Contamination Source (Mill Area)	Contamination Pathway	Potential Receptors	Risk of Significant Pollutant Linkage
Hazardous ground gas located on-site associated with the presence of deep made ground (including localised putrescible materials) and alluvial soils	1- Gas migration and inhalation	Construction workers End users Adjacent land users	Moderate Moderate Moderate
Hazardous ground gas including vapours located on-site associated with the presence of localised hydrocarbon impacted soils (within soils <1m bgl in BH205 and TP211) and perched groundwater (SWS07 and SWS08A)	2- Gas migration and inhalation	Construction workers End users / Adjacent land users	Low / Moderate <u>Low, assuming that any grossly hydrocarbon-impacted soils and groundwater encountered in upper 2m of soil profile are appropriately remediated</u>



NOTES

REVISION

0	For Information
A	>>
B	>>
C	>>
D	>>

SIRIUS GEOTECHNICAL & ENVIRONMENTAL
4245 Park Approach,
Thorpe Park,
Leeds
LS15 8GB
www.thesiriusgroup.com
TEL: 0113 264 9960
FAX: 0113 264 9962



CLIENT

CEG

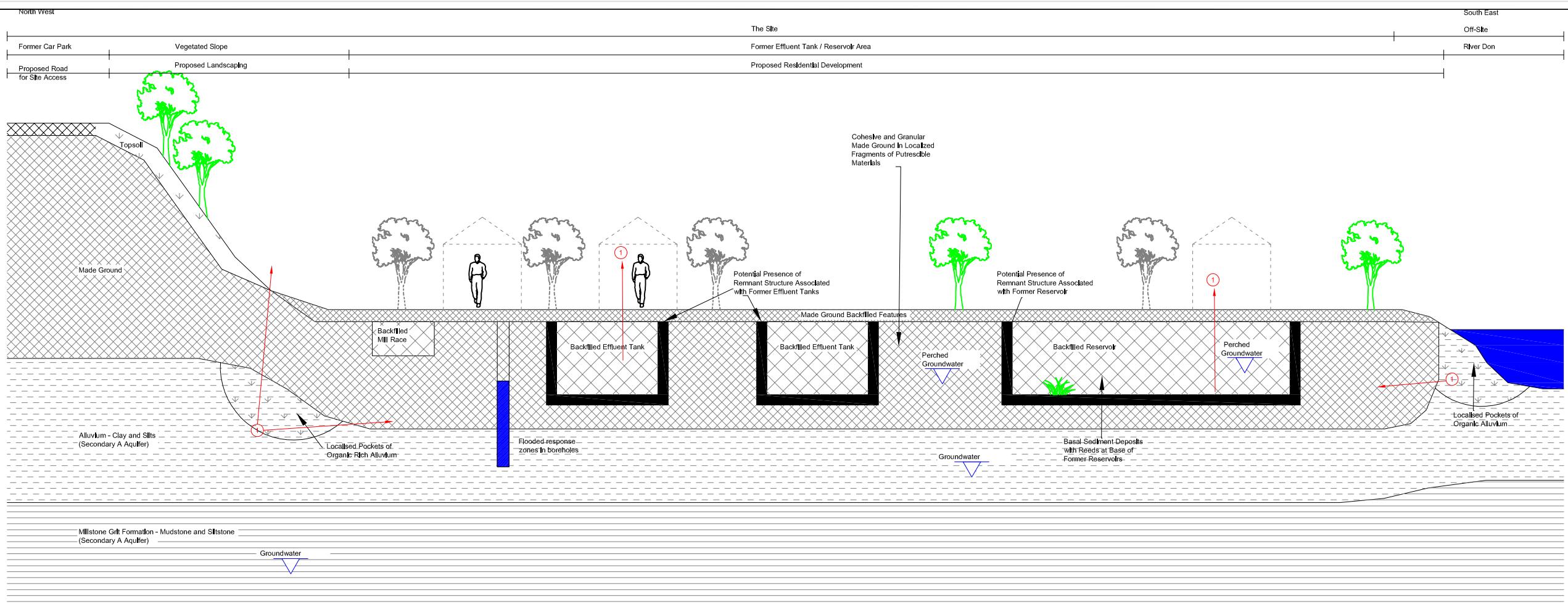
SITE

Oughtibridge Mill

DRAWING TITLE

Conceptual Site Model -
Former Mill Area

DRAWING NO. C6485A/GRA/04B	REVISION NO. 0
DRAWN BY SM	APPROVED BY GH
DATE July 2016	SCALE NTS
	PAPER SIZE A3



Contamination Source (North Western Area)	Contamination Pathway	Potential Receptors	Risk of Significant Pollutant Linkage
Hazardous ground gas located on-site associated with the presence of deep made ground (with localised putrescible materials including wood), basal sediment deposits with reeds within former backfilled structures and alluvial soils	1- Gas migration and inhalation	Construction workers End users Adjacent land users	Low to Moderate Low to Moderate Low to Moderate

NOTES

REVISION	
0	For Information
A	>>
B	>>
C	>>
D	>>

SIRIUS GEOTECHNICAL & ENVIRONMENTAL
 4245 Park Approach,
 Thorpe Park,
 Leeds
 LS15 8GB
www.thesiriusgroup.com
 TEL: 0113 264 9960
 FAX: 0113 264 9962



CLIENT

CEG

SITE

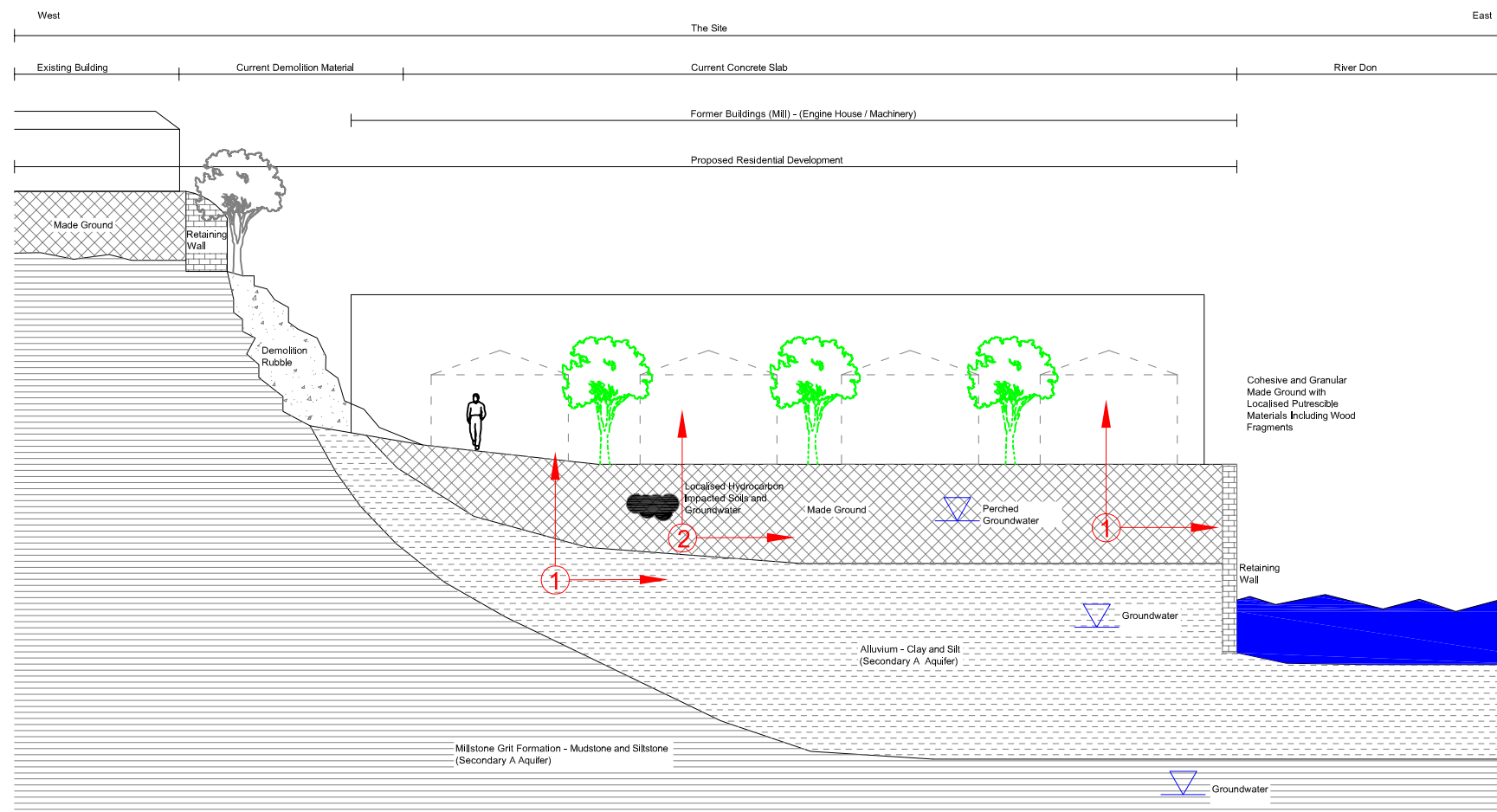
Oughtibridge Mill

DRAWING TITLE

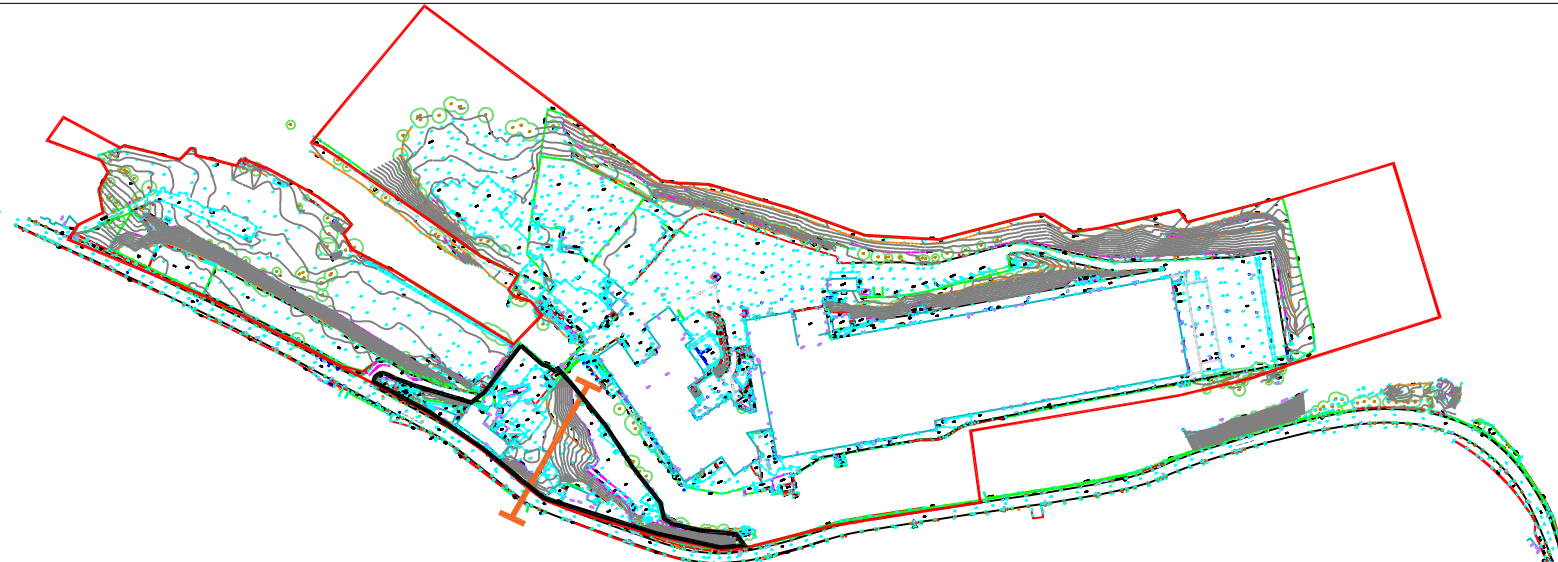
Conceptual Site Model - Northwestern Area (Former Effluent Tanks / Reservoirs)

DRAWING NO. C6485A/GRA/04D	REVISION NO. 0
DRAWN BY SM	APPROVED BY GH
DATE July 2016	SCALE NTS
	PAPER SIZE A3






Contamination Source (South Western Area)	Contamination Pathway	Potential Receptors	Risk of Significant Pollutant Linkage
Hazardous ground gas located on-site associated with the presence of deep made ground (including localised putrescible materials) and alluvial soils	1- Gas migration and inhalation	Construction workers End users Adjacent land users	Low to Moderate Low to Moderate Low to Moderate
Hazardous ground gas including vapours located on-site associated with the presence of localised hydrocarbon impacted soils (in soils <1m bgl within TP209) and groundwater (SBH11)	2- Gas migration and inhalation	Construction workers End users / Adjacent land users	Low / Moderate <u>Low, assuming that any grossly hydrocarbon-impacted soils and groundwater encountered in upper 2m of soil profile are appropriately remediated</u>



NOTES

REVISION	
0	For Information
A	>>
B	>>
C	>>
D	>>

SIRIUS GEOTECHNICAL & ENVIRONMENTAL
 4245 Park Approach,
 Thorpe Park,
 Leeds
 LS15 8GB
www.thesiriusgroup.com
 TEL: 0113 264 9960
 FAX: 0113 264 9962



CLIENT

CEG

SITE

Oughtibridge Mill

DRAWING TITLE

Conceptual Site Model - South Western Area (Former Building / Engine House / Machinery)

DRAWING NO. C6485A/GRA/04C	REVISION NO. 0	
DRAWN BY SM	APPROVED BY GH	
DATE July 2016	SCALE NTS	PAPER SIZE A3