



NOTES
 All dimensions to be verified on site. Do not scale this drawing. All discrepancies to be clarified with project Landscape Architect.
 This drawing is the property of Urban Wilderness Ltd and is issued on the condition it is not reproduced, retained or disclosed to any unauthorised person, either wholly or in part without written consent of Urban Wilderness Ltd.

KEY
 Phase 3 Boundary (9.37ha)

SOFT LANDSCAPE TYPOLOGIES

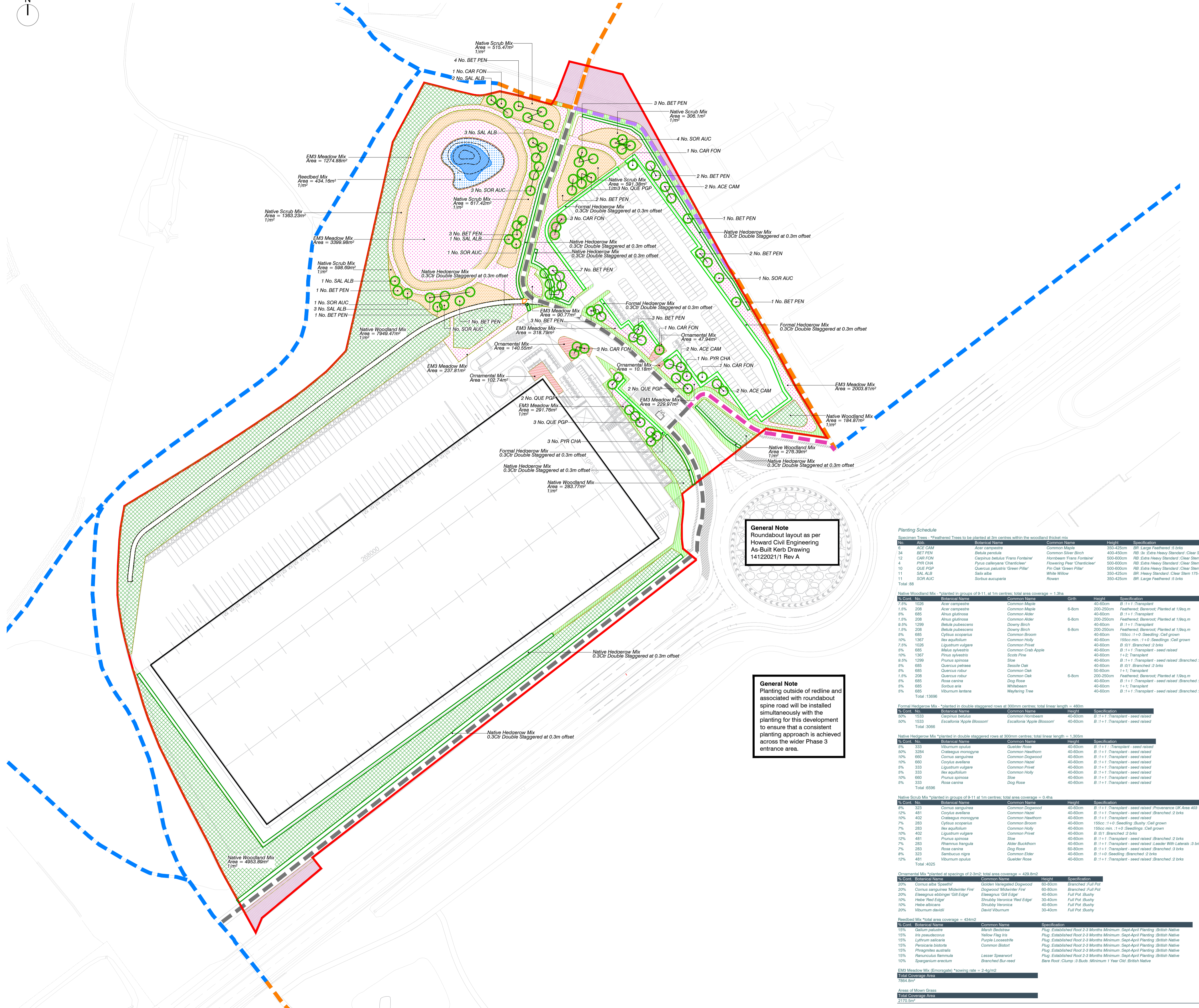
In Season:

- November: Proposed Woodland Mix; planted in groups of 9-11, 1m centres
Total area: 12,940m²
- November: Proposed Scrub Mix; planted in groups of 9-11, 1m centres
Total area: 4,010m²
- July/August: EM3; Special General Purpose Meadow Mix; Emorsgate Seeds
Total area: 7,540m²
- July/August: Wetland planting reedbed mix
- July/August: Proposed Ornamental Planting
- July/August: Proposed areas of mown grass
- Retained & enhanced landscape
No additional planting
- November: Proposed formal hedging
- November: Proposed mixed species hedgerow
- July/August: Proposed mature tree planting

FOOTPATHS

- Existing footpaths (outside site boundary)
- Public footpaths. Uneven surfaces to be made good (those within Phase boundary)
- Realigned public footpath
- Realigned public bridleway. Flexipave surface installed either side of spur road.
- Footpaths (not Public Rights of Way)
- Maintenance path to embankment
MOT Type 1 substrate surfacing

S278 Roundabout
 For planting details to Section 278 roundabout, refer to UW drawing: 334-UW-P-025 Planting Plan Section 278 Roundabout



General Note
 Roundabout layout as per Howard Civil Engineering As-Built Kerb Drawing 14122021/1 Rev A

General Note
 Planting outside of redline and associated with roundabout spine road will be installed simultaneously with the planting for this development to ensure that a consistent planting approach is achieved across the wider Phase 3 entrance area.

Planting Schedule

No.	Code	Botanical Name	Common Name	Height	Specification
8	ACE CAM	Acer campestre	Common Maple	350-425cm	BR Large Feathered :3 brks
14	BET PEN	Betula pendula	Common Silver Birch	400-450cm	RB:38 Extra Heavy Standard / Clear Stem min. 200cm
12	CAR FON	Carpinus betulus Frans Fontaine	Hornbeam Frans Fontaine	500-600cm	RB Extra Heavy Standard / Clear Stem min. 200
4	PYR CHA	Pyrus calleryana 'Charitclair'	Flowering Pear 'Charitclair'	500-600cm	RB Extra Heavy Standard / Clear Stem min. 200
10	QUE PGP	Quercus pedunculata 'Green Pillar'	Pir Oak 'Green Pillar'	550-600cm	RB Extra Heavy Standard / Clear Stem min. 200
11	SAL ALB	Salix alba	White Willow	350-425cm	BR Heavy Standard / Clear Stem 175-200 :5 brks
11	SOR AUC	Sorbus aucuparia	Rosier	350-425cm	BR Large Feathered :5 brks
Total 88					

% Cont.	No.	Botanical Name	Common Name	Girth	Height	Specification
7.5%	1026	Acer campestre	Common Maple		40-60cm	B : 1 + 1 / Transplant
1.5%	208	Acer campestre	Common Maple	6-8cm	200-250cm	Feathered; Bareroot; Planted at 1/8sq.m
5%	685	Alnus glutinosa	Common Alder	40-60cm	40-60cm	B : 1 + 1 / Transplant
1.5%	208	Alnus glutinosa	Common Alder	6-8cm	200-250cm	Feathered; Bareroot; Planted at 1/8sq.m
8.9%	1299	Betula pubescens	Downy Birch	40-60cm	40-60cm	B : 1 + 1 / Transplant
1.5%	208	Betula pubescens	Downy Birch	6-8cm	200-250cm	Feathered; Bareroot; Planted at 1/8sq.m
5%	685	Oxylus scoparius	Common Broom	40-60cm	155cm; 1 + 0; Seedling; Cell grown	
10%	1967	Ulex europaeum	Common Holly	40-60cm	155cm; 1 + 0; Seedlings; Cell grown	
7.5%	1026	Ligustrum vulgare	Common Privet	40-60cm	B : 01 / Branched : 2 brks	
5%	685	Malus sylvestris	Common Crab Apple	40-60cm	B : 1 + 1 / Transplant - seed raised	
10%	1367	Pinus sylvestris	Scots Pine	40-60cm	1 + 2; Transplant	
9.5%	1299	Prunus spinosa	Sloe	40-60cm	B : 1 + 1 / Transplant - seed raised; Branched : 2 brks	
5%	685	Quercus petraea	Seaside Oak	40-60cm	B : 01 / Branched : 2 brks	
5%	685	Quercus robur	Common Oak	50-60cm	1 + 1; Transplant	
1.5%	208	Quercus robur	Common Oak	6-8cm	200-250cm	Feathered; Bareroot; Planted at 1/8sq.m
5%	685	Rosa canina	Dog Rose	40-60cm	B : 1 + 1 / Transplant - seed raised; Branched : 3 brks	
5%	685	Sorbus aria	Whitebeam	40-60cm	1 + 1; Transplant	
5%	685	Viburnum lantana	Wayfaring Tree	40-60cm	B : 1 + 1 / Transplant - seed raised; Branched : 2 brks	
Total 13696						

% Cont.	No.	Botanical Name	Common Name	Height	Specification
50%	1533	Carpinus betulus	Common Hornbeam	40-60cm	B : 1 + 1 / Transplant - seed raised
50%	1533	Escallonia Agate Blossom	Escallonia Agate Blossom	40-60cm	B : 1 + 1 / Transplant - seed raised
Total 3006					

% Cont.	No.	Botanical Name	Common Name	Height	Specification
0%	333	Viburnum opulus	Cornel Rose	40-60cm	B : 1 + 1 / Transplant - seed raised
50%	3284	Crataegus monogyna	Common Hawthorn	40-60cm	B : 1 + 1 / Transplant - seed raised
10%	660	Cornus sanguinea	Common Dogwood	40-60cm	B : 1 + 1 / Transplant - seed raised
10%	660	Cornus avellana	Common Hazel	40-60cm	B : 1 + 1 / Transplant - seed raised
5%	333	Ligustrum vulgare	Common Privet	40-60cm	B : 1 + 1 / Transplant - seed raised
5%	333	Ulex europaeum	Common Holly	40-60cm	B : 1 + 1 / Transplant - seed raised
10%	660	Prunus spinosa	Sloe	40-60cm	B : 1 + 1 / Transplant - seed raised
5%	333	Rosa canina	Dog Rose	40-60cm	B : 1 + 1 / Transplant - seed raised
Total 8596					

% Cont.	No.	Botanical Name	Common Name	Height	Specification
8%	323	Cornus sanguinea	Common Dogwood	40-60cm	B : 1 + 1 / Transplant - seed raised / Provenance UK Area 403
2%	481	Corylus avellana	Common Hazel	40-60cm	B : 1 + 1 / Transplant - seed raised / Branched : 2 brks
10%	402	Crataegus monogyna	Common Hawthorn	40-60cm	B : 1 + 1 / Transplant - seed raised
7%	283	Oxylus scoparius	Common Broom	40-60cm	155cm; 1 + 0; Seedling; Shady; Cell grown
7%	283	Ulex europaeum	Common Holly	40-60cm	155cm; 1 + 0; Seedlings; Cell grown
10%	402	Ligustrum vulgare	Common Privet	40-60cm	B : 01 / Branched : 2 brks
12%	481	Prunus spinosa	Sloe	40-60cm	B : 1 + 1 / Transplant - seed raised / Branched : 2 brks
7%	283	Rhamnus frangula	Alder Buckthorn	40-60cm	B : 1 + 1 / Transplant - seed raised / Leader 10m / Laterals : 3 brks
7%	283	Rosa canina	Dog Rose	60-80cm	B : 1 + 1 / Transplant - seed raised / Branched : 3 brks
8%	323	Sambucus nigra	Common Elder	40-60cm	B : 1 + 0; Seedling / Branched : 2 brks
12%	481	Viburnum opulus	Cornel Rose	40-60cm	B : 1 + 1 / Transplant - seed raised / Branched : 2 brks
Total 4025					

% Cont.	Botanical Name	Common Name	Height	Specification
20%	Cornus alba Sconior	Cornel Dogwood	60-80cm	Branched Full Pot
20%	Cornus sanguinea Midwinter Fire	Dogwood Midwinter Fire	60-80cm	Branched Full Pot
20%	Eleagnus alba 'Gilt Edge'	Shepherd's Tree	40-60cm	Full Pot / Shady
10%	Hebe 'Red Edge'	Shrubby Veronica 'Red Edge'	30-40cm	Full Pot / Shady
10%	Hebe albicans	Shrubby Veronica	40-60cm	Full Pot / Shady
20%	Viburnum davidii	David Viburnum	30-40cm	Full Pot / Shady

% Cont.	Botanical Name	Common Name	Specification
15%	Galium palustre	Marsh Bedstraw	Plug / Established Root 2-3 Months Minimum / Sept-April Planting / British Native
15%	Urtica procumbens	Yellow Pig Tail	Plug / Established Root 2-3 Months Minimum / Sept-April Planting / British Native
15%	Lupinus salicaria	Purple Loosestrife	Plug / Established Root 2-3 Months Minimum / Sept-April Planting / British Native
15%	Panicum bistorta	Common Bistort	Plug / Established Root 2-3 Months Minimum / Sept-April Planting / British Native
15%	Phragmites australis	Common Reed	Plug / Established Root 2-3 Months Minimum / Sept-April Planting / British Native
15%	Ranunculus flammula	Lesser Spearwort	Plug / Established Root 2-3 Months Minimum / Sept-April Planting / British Native
10%	Sparganium erectum	Branched Bur-reed	Bare Root / Clump : 3 Buds / Minimum 1 Year Old / British Native

Total Coverage Area	Total Coverage Area
1744.5m ²	2170.5m ²

First Issue 12 Jul 22

rev details date

URBAN WILDERNESS

7 Saw Mill Yard, Water Lane, Holbeck, Leeds, LS15 6WH
 www.urbanwilderness.co.uk
 design@urbanwilderness.co.uk
 0113 472 0930
 registered in Scotland SC371979

client
Firethorn Trust

project
Gateway 36 Phase 3

drawing title
Landscape Planting Plan Phase 3

drawing status
CONSTRUCTION

drawn by **LJM** checked by **TBR** date **12 Jul 22**

scale **1:1000** paper size **A1**

job/dwg no. **441-UW-C-005** rev.